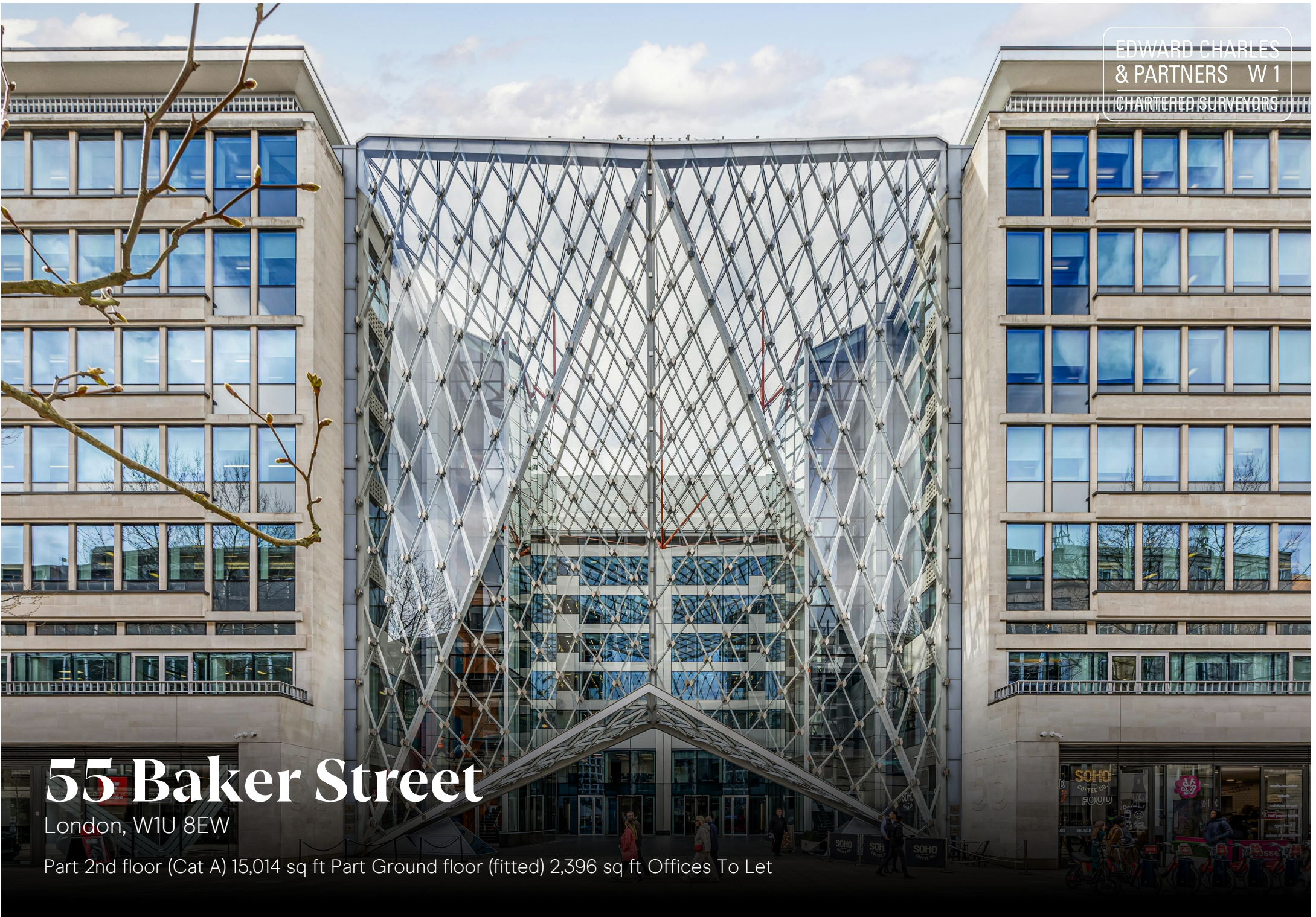


EDWARD CHARLES  
& PARTNERS W 1  
CHARTERED SURVEYORS

# 55 Baker Street

London, W1U 8EW

Part 2nd floor (Cat A) 15,014 sq ft Part Ground floor (fitted) 2,396 sq ft Offices To Let



# Key Points

- Air conditioning
- Excellent natural light
- Commissionaire
- Contemporary reception
- Full access raised floor
- Bike parking
- Car Parking
- Showers
- New key point...





# Availability

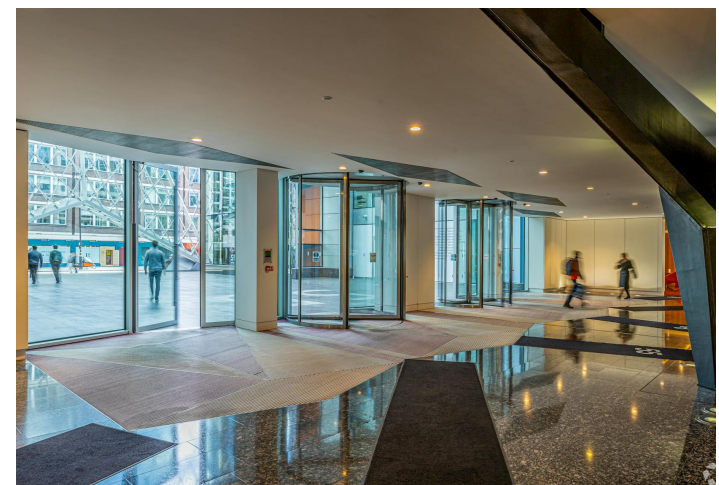
Name	sq ft	sq m	Tenure	Availability
Ground - Ground Floor	2,396	222.60	To Let	Available
2nd - Part floor South	15,014	1,394.85	To Let	Available
Total	17,410	1,617.45		

## Description

Part 2nd floor (Cat A) 15,014 sq ft  
Part Ground floor (fitted) 2,396 sq ft  
Offices To Let

## Tenure

Leasehold



# Further Information

## Location

Located halfway up the western side of Baker Street. This prominent headquarters office building offering high specified office, retail and residential accommodation. Baker Street Station (Jubilee, Bakerloo, Hammersmith & City, Metropolitan and Circle lines) is located 500m to the north and offering fantastic connections across Central London.

## Links

[Website →](#)  
[Floor Plans →](#)

## Contact

Sean Cunningham  
07827 985858

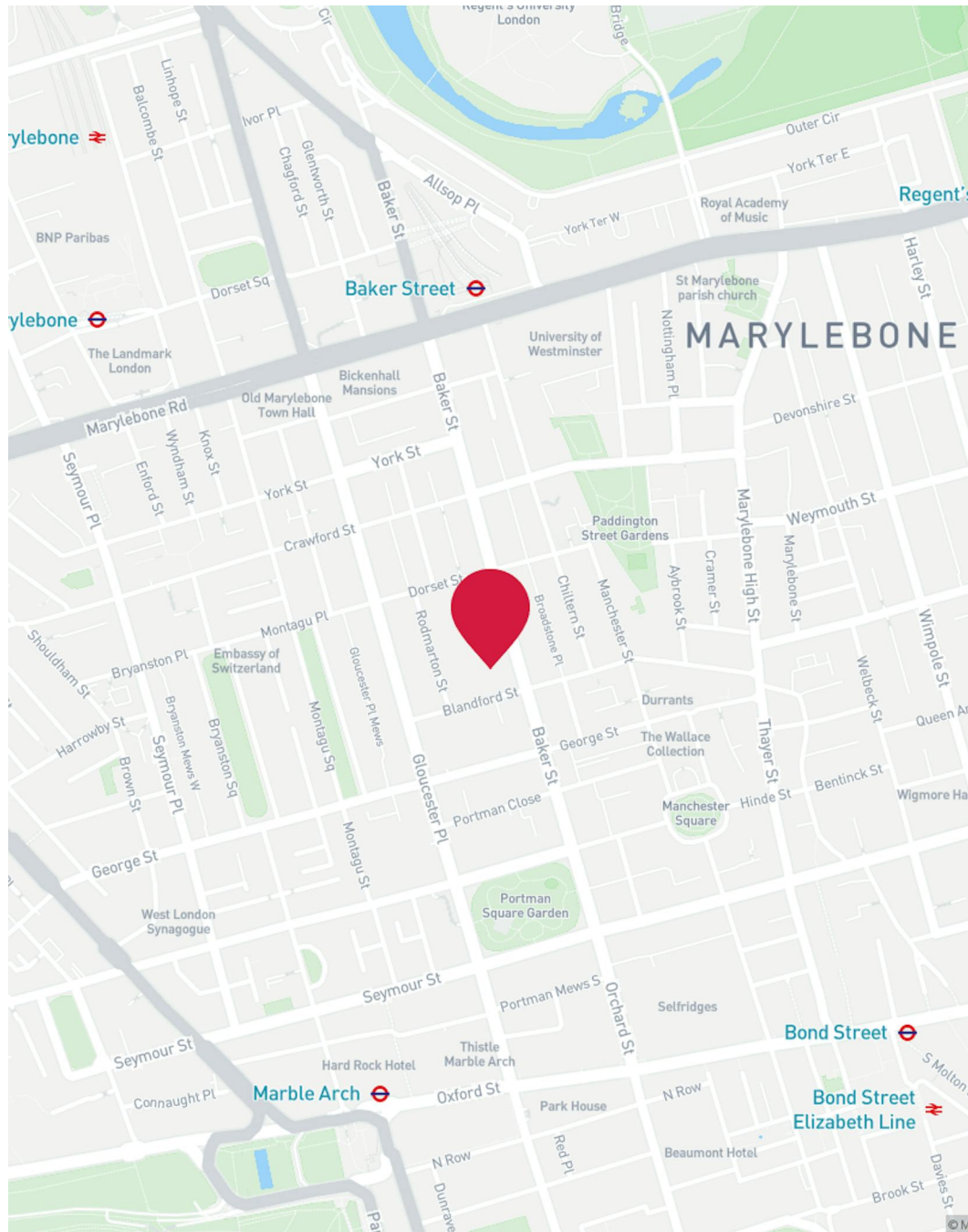
Jamie Shuttle  
07788 414332

[scunningham@edwardcharles.co.uk](mailto:scunningham@edwardcharles.co.uk)  
[jamieshuttle@edwardcharles.co.uk](mailto:jamieshuttle@edwardcharles.co.uk)

Guy Milne (Hanover Green)

Nick Raven (Hanover Green)

[edwardcharles.co.uk](http://edwardcharles.co.uk)



**EDWARD CHARLES  
& PARTNERS W1**  
CHARTERED SURVEYORS

No responsibility is taken for any error, omission or mis-statement in these particulars which do not constitute an offer or a contract. No representation or warranty is made or given during negotiations, in particulars, or elsewhere and applicants should satisfy themselves as to the accuracy of all information furnished to them.  
Generated on 10/04/2024