

## TO LET - RETAIL

---

13 COMMON GREEN

STRATHAVEN, ML10 6AQ



### KEY HIGHLIGHTS

- 3,167 sq ft
- Class 3 potential, subject to planning
- Generous on-street parking plus 10 x dedicated car parking spaces to the rear
- Neighbouring occupiers include Greggs, Scotmid, Boots, Elite Vet Group and James Alexander Butchers
- Highly prominent Class 1A premises located within the heart of Strathaven
- Available for immediate occupation
- New FRI lease available - £28,000 per annum

## SUMMARY

Available Size	3,167 sq ft
Rent	£28,000 per annum
Rateable Value	£14,900 Rates payable - £5,196.00
VAT	To be confirmed
EPC Rating	Upon enquiry

## DESCRIPTION

End-terraced Class 1A premises arranged over ground and first floor level.

Internally the ground floor provides main larger open-plan space with a series of partitioned rooms that be kept / removed to suit an occupiers requirements.

A single staircase to the rear provides access to the first floor that provides main open-plan front office together with male & female WCs and kitchen tea-prep.

There are 10 x dedicated car parking spaces to the rear that can be fenced off / secured if required.

## LOCATION

Strathaven is an affluent commuter town located within the South Lanarkshire Local Authority Region approximately 4.5 miles south of Hamilton, 8 miles south of East Kilbride and 25 miles south of Glasgow.

The subject property commands a highly prominent position within the heart of Strathaven town centre on the west side of Common Green by its junction with Bridge Street.

Generous on-street parking is provided to the front on Common Green and there is a large public car park situated to the the rear.

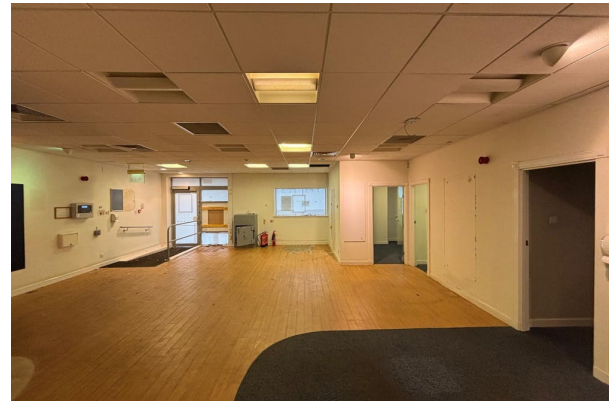
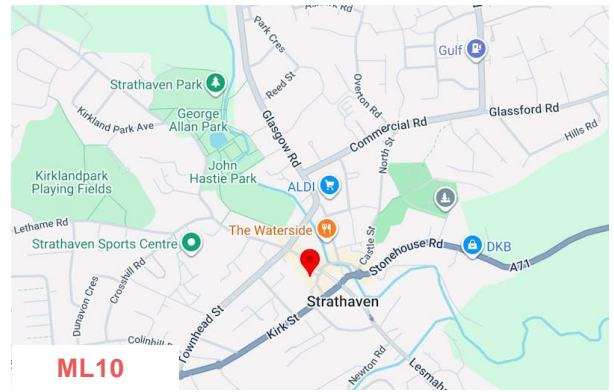
Regular bus services operate through Strathaven with a bus stop situated immediate to the front of the subject property.

Neighbouring occupiers include Greggs, Scotmid, Boots, Elite Vet Group and James Alexander Butchers.

## ACCOMMODATION

The accommodation comprises the following areas:

Name	sq ft	sq m	Availability
Ground	2,278	211.63	Available
1st - Storage / Ancillary	889	82.59	Available
<b>Total</b>	<b>3,167</b>	<b>294.22</b>	



## VIEWING & FURTHER INFORMATION

**Gregor Brown**

0141 212 0059 | 07717447897  
gb@gmbrown.co.uk

**Kerrie Currie**

0141 212 0059 | 07778 431703  
kc@gmbrown.co.uk



G·M·BROWN