



590 Sq Ft Ground Floor Workshop or Storage with Office Space

Ground Floor

Cobden Mill, Bentinck St, Farnworth,
BL4 7EY

Light Industrial

TO LET

590 sq ft

(54.81 sq m)

- Ground Floor
- Located Directly of the Goods Entrance
- Office Space
- Close to Motorway and Railway Station

Where your business belongs

Ground Floor, Cobden Mill, Bentinck St, Farnworth, BL4 7EY

Summary

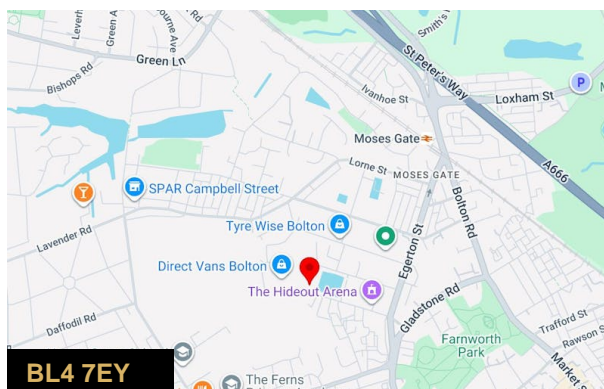
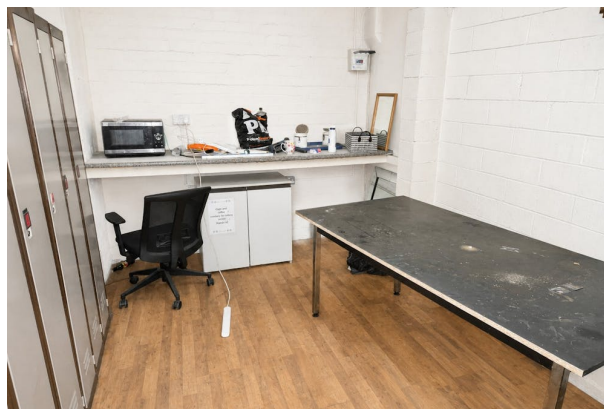
Available Size	590 sq ft
Rent	£500 per month
Business Rates	'
EPC Rating	Upon enquiry

Description

This ground floor workshop is located in iconic Cobden Mill a short drive from the motorway and within walking distance of Moses Gate Railway Station. Accessed directly from the communal loading area it would suit a small manufacturer or distributor. It would also make an ideal secure storage unit.

In addition to the workshop is an office and an allocated parking space.

For more information or to arrange a viewing please contact the office.



Viewing & Further Information

son rier° | Stuart Pearson
1611 764 4440
commercial@pearsonferrier.co.uk

More properties @ [pearsonferrier.co.uk](https://www.pearsonferrier.co.uk)