



**229 HIGH ROAD**

**Willesden, NW10 2RY**

Retail unit with high footfall which benefits from use class E.

930 SQ FT

**FOREST**  
REAL ESTATE



# Summary

Available Size	930 sq ft
Rent	£21,000 Per annum
Rates Payable	£7,859.25 Per annum
VAT	Not applicable
EPC Rating	D (87)

# Key Features

- High footfall
- E use class
- 9ft frontage
- Electric security shutter
- CCTV (untested)
- Wood flooring
- WC
- Kitchenette
- 5 minute walk from Dollis Hill Station (Jubilee Line)
- Available now

# Description

The property has a 9ft frontage protected by an electric shutter, consisting of a ground floor unit with wood flooring and a basement providing additional storage space.

The unit benefits from use class E and is suitable to a variety of retail occupiers.

# Location

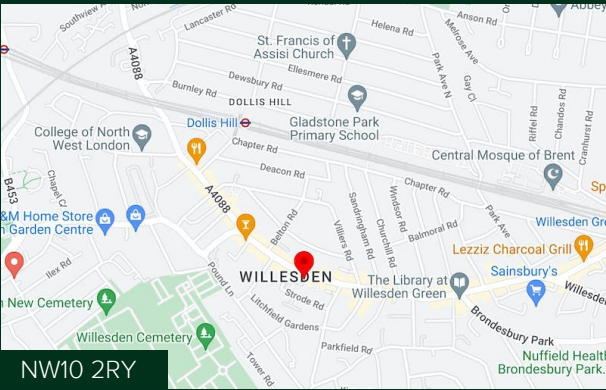
Dollis Hill Station is a 5 minute walk away providing great access to the Jubilee Line.

This property is also well serviced by local bus routes and benefits from good footfall and road traffic.

# Accommodation

The accommodation comprises the following areas:

Name	sq ft	sq m
Ground	726	67.45
Basement	204	18.95
Total	930	86.40



# Viewing & Further Information

**Cormac Sears**

020 3355 1555 | 07850 399 627  
cormac@forestrealestate.co.uk

**Alfie England**

020 3355 1555 | 07756 623 656  
alfie@forestrealestate.co.uk

# CONNECT WITH US

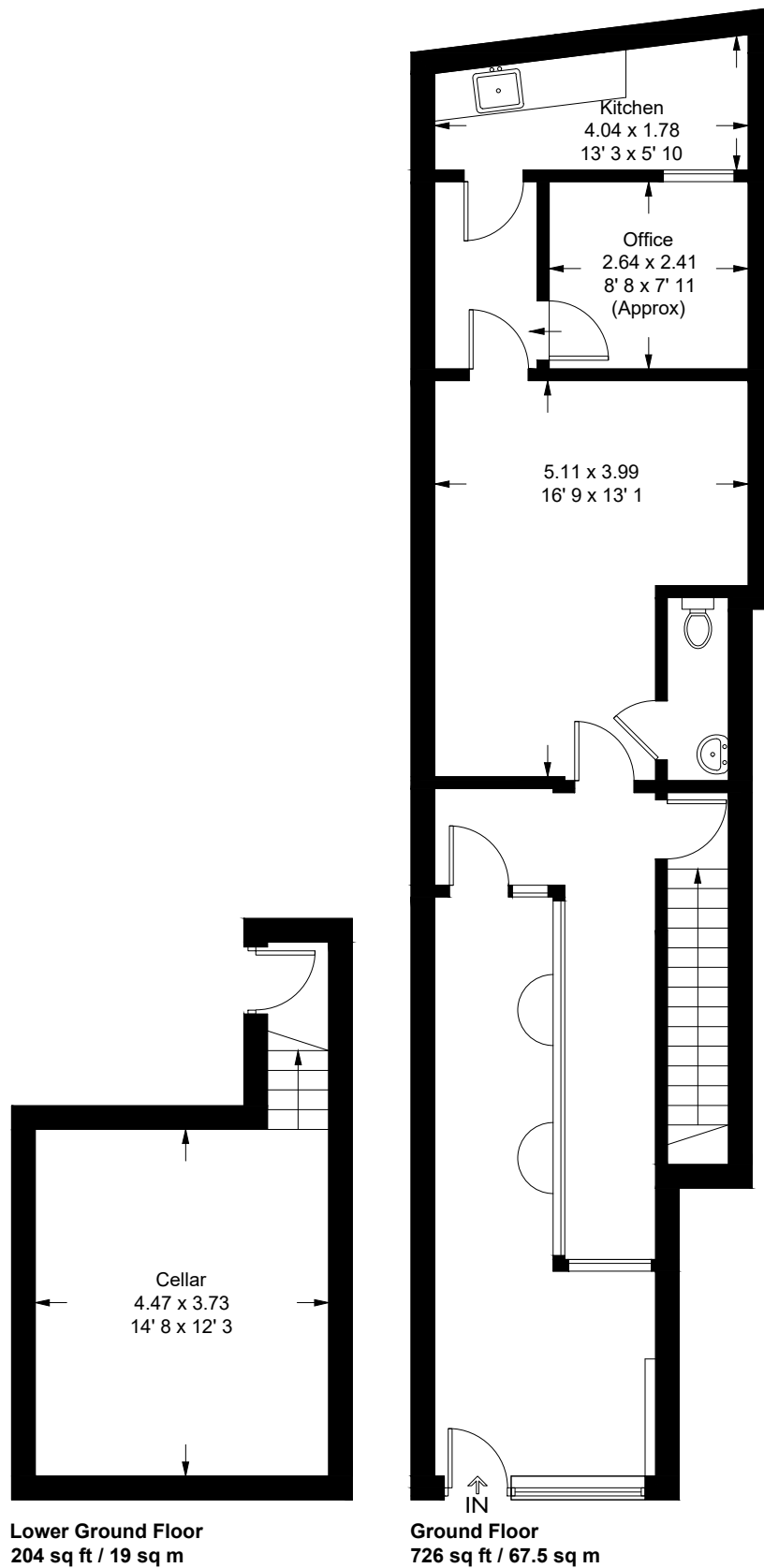
1 Bridge Lane, London, NW11 0EA  
020 3355 1555  
info@forestrealestate.co.uk  
www.forestrealestate.co.uk

FOREST  
REAL ESTATE

The above information contained within this brochure is subject to contract. These particulars are for general information only and do not constitute any part of an offer or contract. All statements contained therein are made without responsibility on the part of the vendors or lessors and are not to be relied upon as statement or representation of fact. Intending purchasers or lessees must satisfy themselves, by inspection, or otherwise, as to the correctness of each of the statements of dimensions contained in these particulars. Generated on 13/02/2023

# High Road

Approximate Gross Internal Area = 930 sq ft / 86.5 sq m



This plan is not to scale and must be used as layout guidance only. All measurements and areas are approximate and should not be relied upon to provide accurate information. This plan must not be relied upon when making property valuations, design considerations or any other such relevant decisions. We accept no responsibility or liability (whether in contract, tort or otherwise) in relation to any loss whatsoever arising from or in connection with any use of this plan or the adequacy, accuracy or completeness of it or any information within it.