



To Let

Excellent connectivity to Crossrail and Broadgate Campus

- Located adjacent to Broadgate - London's largest pedestrianised mixed use campus
- Part fitted units available
- Excellently connected - Moorgate Crossrail (100m), Liverpool Street (3 minutes walk), Bank (8 minutes walk)
- Manned reception

17 Dominion Street

London, EC2M 2EF

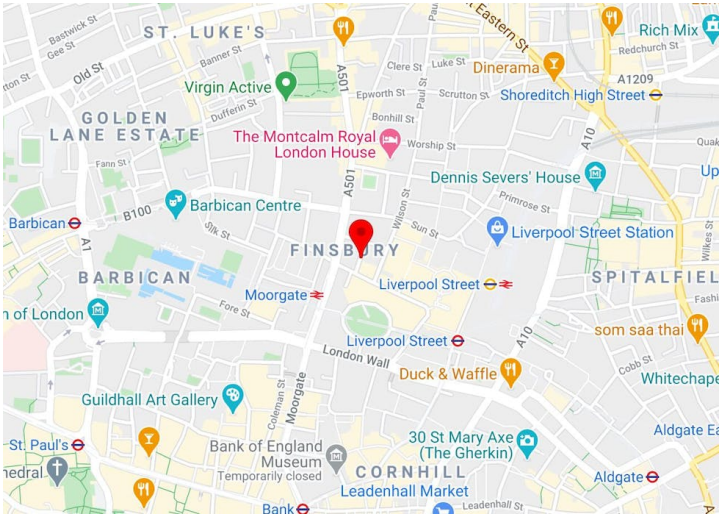
2,518 to 15,627 sq ft

233.93 to 1,451.80 sq m

Reference: #2915

17 Dominion Street

London, EC2M 2EF



Summary

Available Size	2,518 to 15,627 sq ft / 233.93 to 1,451.80 sq m
Rent	Rent on application
Rates Payable	£21 per sq ft estimated
Service Charge	£19.20 per sq ft estimated
EPC	D (91)

Location

17 Dominion Street is a modern office building located at the northern end of Moorgate within the traditional London City core.

The building is located moments away from the amenities of the Broadgate Estate and within a 3 minute walk of both Moorgate and Liverpool Street stations (Crossrail, Underground and Overground links).

Accommodation

Part fitted floors available on a new lease direct from the Landlord.

Floor/Unit	sq ft	Rent	Availability
6th	3,508	roa	Coming Soon
5th	4,273	roa	Coming Soon
2nd	4,481	roa	Coming Soon
Ground	3,890	roa	Coming Soon
Total	16,152		

Specification

- Four pipe fan coil air conditioning
- Raised floor
- Metal tiled suspended ceiling
- Manned reception
- 24 hour access
- Refurbished Male and female WCs
- 2 x passenger lifts
- Refurbished reception
- Bike racks (external)

Viewings

Viewings are to be arranged by sole agent JLL

Terms

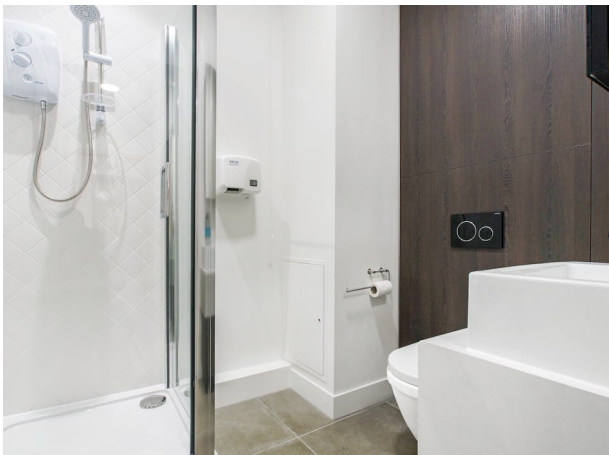
New, flexible leases are available direct from the Landlord.

Local Area

17 Dominion Street is located in a vibrant location bound by Eldon Street, Wilson Street and Finsbury Pavement. Broadgate Campus (32 acre mixed-use estate) with over 300,000 sq ft of retail and leisure including Broadgate Circle, Everyman Cinema and 100 Liverpool Street







17 Dominion Street – 3rd floor – Open Plan

