



Ayers & Cruiks
COMMERCIAL

For Sale
3,998 sq ft

**230 Mountnessing Road,
Billericay, CM12 0EH**

**Residential development
opportunity with off road
parking and a rear garden.**

- Residential development opportunity
- Former care community hospital
- 8 bedrooms
- Offers in excess of £800,000

www.ayerscruiks.co.uk



230 Mountnessing Road, Billericay,
CM12 0EH

Summary

- Price: Offers in excess of £800,000
- Business rates: Interested parties are advised to confirm the rating liability with the relevant local authority
- VAT: To be confirmed

Further information

- [View details on our website](#)

Contact & Viewings

Neil Burroughs
01702 608035
neil@ayerscruiks.co.uk

Cameron Cruiks
01702 608045
cameron@ayerscruiks.co.uk

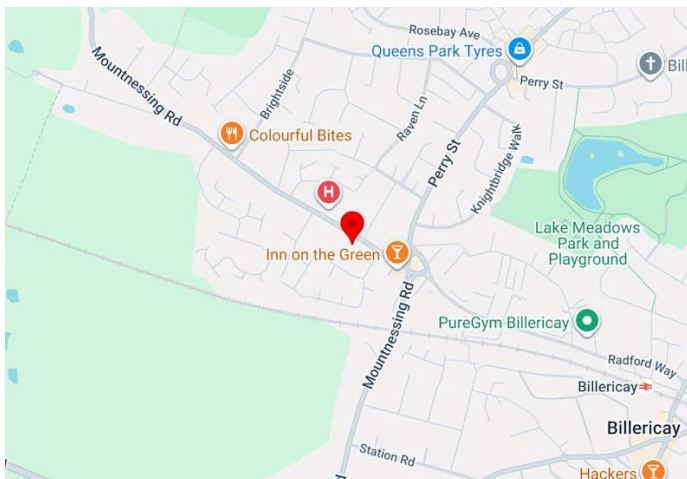
Darrell Clarke
01702 608039
darrell@ayerscruiks.co.uk

Bradley Hair
01702 608057
bradley@ayerscruiks.co.uk

Offices

86-88 Baxter Avenue,
Southend-On-Sea,
Essex,
SS2 6HZ
Tel: 01702 343060

Burgundy Court
64/66 Springfield Road,
Chelmsford,
Essex,
CM2 6JY
Tel: 01245 202555



Description

This property has been vacant since 2023 but was previously used as an intermediate care community hospital. It comprises of 8 bedrooms, 4 reception rooms, 2 kitchens, office space and 2 bathrooms. It also benefits from a garden to the rear and off road parking.

Location

Mountnessing Road is a well-connected route through Billericay (CM12), linking the town centre with Brentwood, Shenfield and Mountnessing Village.

Accommodation

Building Type	sq ft	sq m	Availability
Residential Development	3,998	371.43	Available

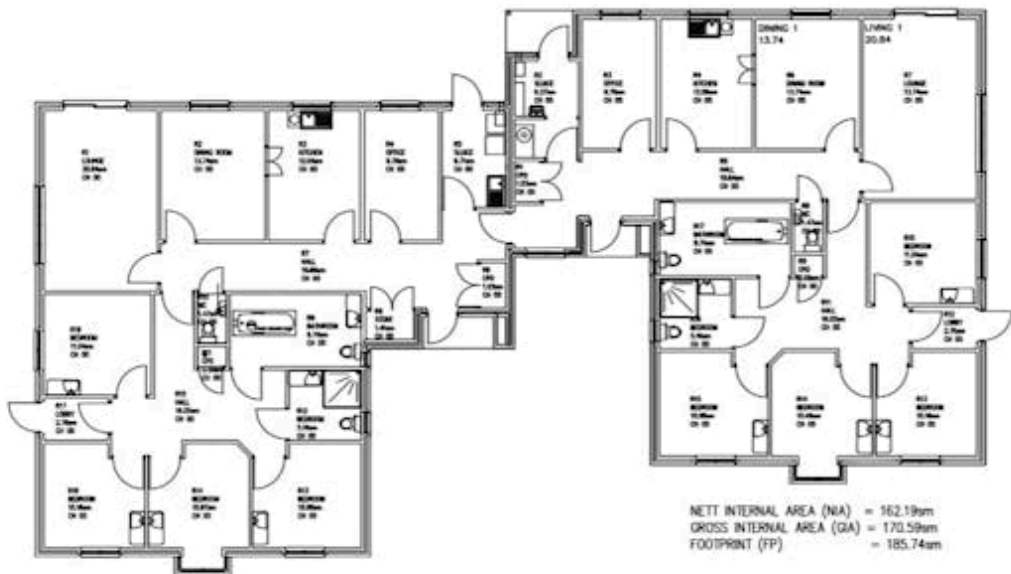


Price

Offers in excess of £800,000

Viewings

Strictly by prior appointment via the landlords appointed agents Ayers & Cruiks.



NETT INTERNAL AREA (NIA) = 162.19sqm
GROSS INTERNAL AREA (GIA) = 170.59sqm



