



SELF CONTAINED OFFICE TO LET

First Floor, 19 Lloyds Court

Unit 19, Lloyds Court,
Crawley, RH10 9QX

OFFICE TO LET

2,693 sq ft

- Recently redecorated
- Unique reception
- Kitchenette
- Perimeter trunking
- WC facilities
- 8 allocated car parking spaces

First Floor, 19 Lloyds Court, Unit 19, Lloyds Court, Crawley, RH10 9QX

Summary

Available Size	2,693 sq ft
Rent	£38,000 per annum plus VAT
Rates Payable	£5.61 per sq ft 1.4.2026-31.3.2027
Rateable Value	£35,000
Service Charge	£4,693.24 per annum plus VAT (2026 figure)
Estate Charge	£1,155.95 per annum plus VAT (insurance charge figure for the period ending 31.12.2026)
EPC Rating	D (100)

Location

Lloyds Court is situated on Manor Royal, the industrial estate is very well connected via Metrobus, Manor Royal Central and Manor Royal West within a 0.3 mile walk. The M23 (J10) is approximately 2 miles from Lloyds Court, providing access to the coast and London.

Description

19 Lloyds Court fronts Manor Royal. The offices are of brick construction, with access and car parking fronting Manor Royal. The unit has recently been redecorated and benefits from new WC facilities.

Specification

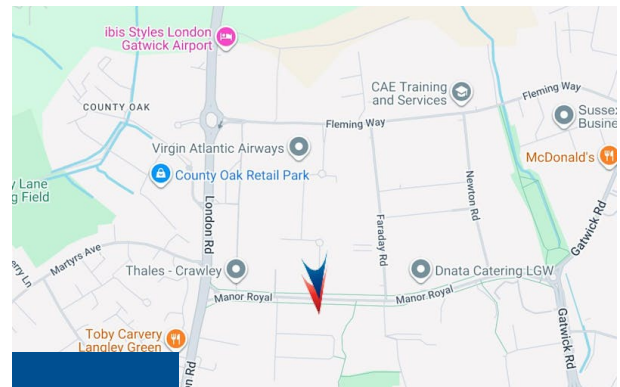
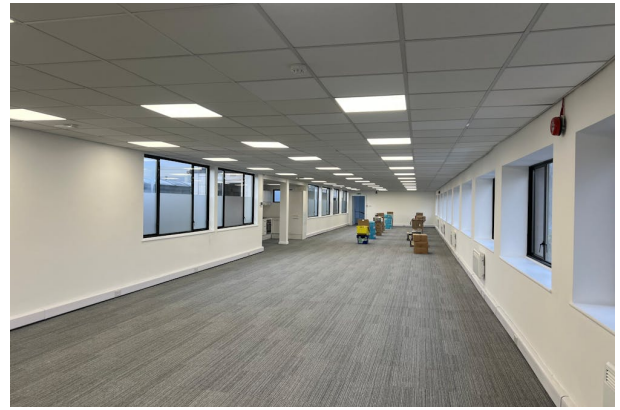
- Recently redecorated
- Unique reception
- Kitchenette
- Perimeter trunking
- WC facilities
- 8 allocated car parking spaces

Terms

A new full repairing and insuring lease is available for a term to be agreed.

Anti Money Laundering

The successful tenant will be required to provide the usual information to satisfy the AML requirements when Heads of Terms are agreed.



Viewing & Further Information

Harry Deacon-Jackson

07907 483182

hdj@ftdjohns.co.uk

