



 [View Online](#)

frost  
meadowcroft

2-10 ROSLIN ROAD, ACTON, W3 8DH  
3,746 SQ FT (348.01 SQ M)

## LOCATION

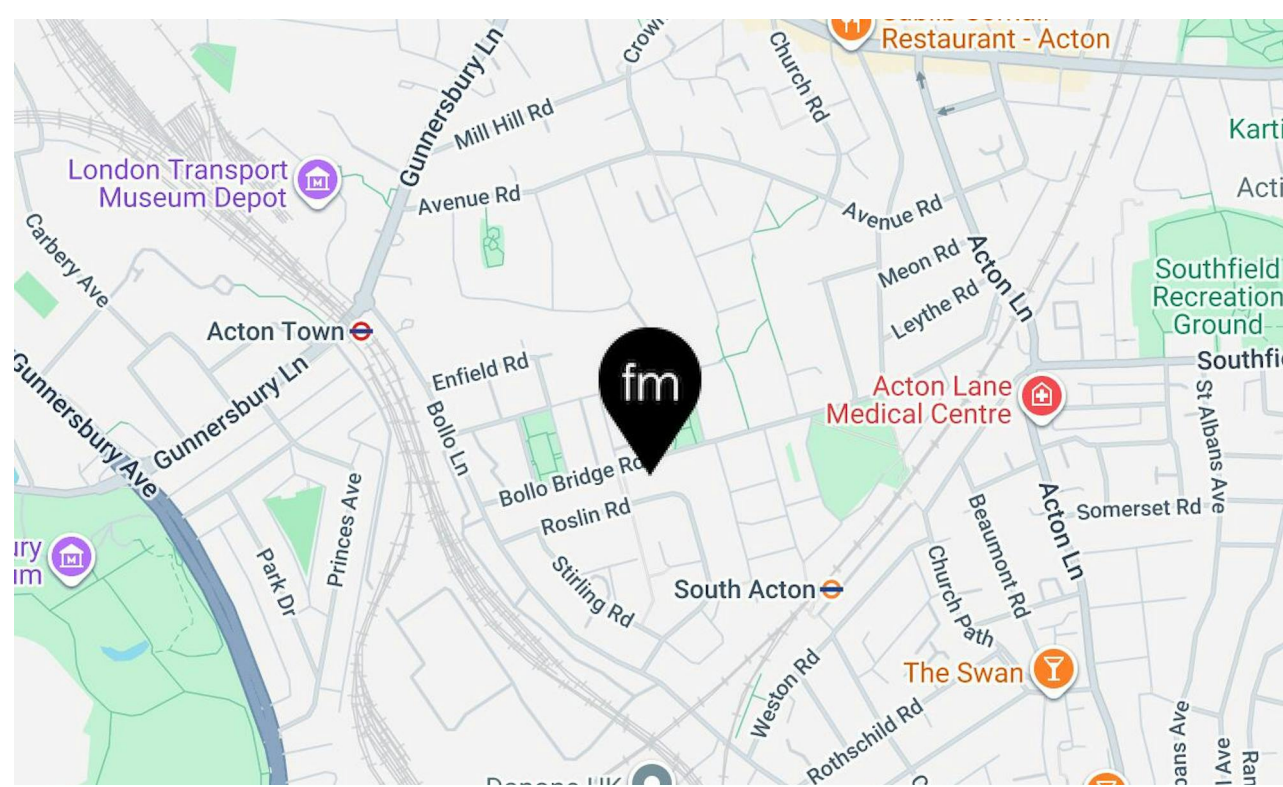
---

The property is situated on Roslin Road in Acton W3. Bollo Lane connects with Chiswick High Road (A315), via Acton Lane to the south, and with the North Circular Road (A406) via Gunnersbury Lane, to the north. Acton Town (Picadilly Line) and Chiswick Park (District Line) Station are both within walking distance. All the amenities, bars, shops and restaurants of Chiswick High Road are within 0.5 miles of the properties.

## DESCRIPTION

---

A well-positioned ground floor corner unit offering excellent natural light and strong roadside presence. The dual-aspect configuration delivers generous daylight throughout, while the prominent corner frontage provides high visibility from the street, ideal for occupiers seeking brand exposure or an impactful customer-facing address. Presented in shell and core condition, the unit offers incoming occupiers the opportunity to specify and deliver a fit-out tailored to their exact operational requirements.



# frost

## meadowcroft

### **AVAILABILITY**

The accommodation comprises the following areas:

<b>Name</b>	<b>sq ft</b>	<b>sq m</b>	<b>Availability</b>
Ground - Ground Floor	3,746	348.01	Available
<b>Total</b>	<b>3,746</b>	<b>348.01</b>	



## RENT

£20 per sq ft (£74,920 per Annum)

## BUSINESS RATES

Rates Payable To be confirmed

## LEGAL FEES

Each party to bear their own costs

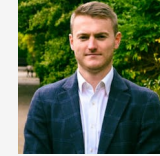
## VAT

Applicable

## ADDITIONAL INFORMATION

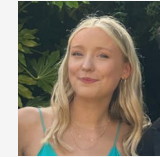
[VIEW WEBSITE](#)

## CONTACT



### Tristan David

020 8748 1200 | 07789347999  
tdavid@frostmeadowcroft.com



### Katie Joyner

020 8748 1200 | 07502  
542997  
kjoyner@frostmeadowcroft.com

Date of Publication: May 2026



Misrepresentation Act 1967: These particulars are believed to be correct but their accuracy is not guaranteed and they do not form part of any contract. Unless otherwise stated, all prices and rents are quoted exclusive of VAT.

# frost meadowcroft

---

**WEST LONDON'S LEADING  
COMMERCIAL PROPERTY AGENCY**

**FROSTMEADOWCROFT.COM | 020 8748 1200  
ISLAND STUDIOS, 22 ST PETERS SQUARE  
HAMMERSMITH, LONDON W6 9NW**