



# To Let

**Retail Unit to Let - <https://asda.live.jll.com/>**

- On the instructions of Asda
- Asda Store is 40,000 sq ft
- 400 parking spaces
- Suitable for a variety of retail uses subject to planning

## Unit 15

West Rivergate Shopping Centre, Viersen Platz,  
Peterborough, PE1 1ET

---

**9,300 sq ft**

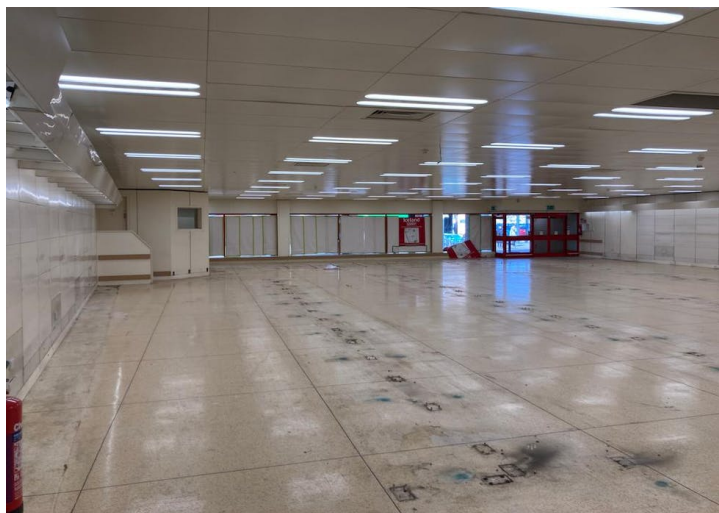
864 sq m

---

**Reference: #100158**

# Unit 15

West Rivergate Shopping Centre, Viersen Platz, Peterborough, PE1 1ET



## Summary

Available Size	9,300 sq ft / 864 sq m
Rent	Rent on Application
Rates Payable	£61,952 per annum based on 2017 valuation
EPC	E (119)

## Description

Unit 15 (former Iceland) is 9,300 sq ft with a large ground floor retail area. It forms part of a busy parade of retail units with a great deal of passing trade between the Asda and George stores and benefits from a large glass frontage.

## Location

The Asda store forms part of the Rivergate Shopping Centre and is located off the A15. It is just a short walk to both Peterborough Train Station and the town centre.

## Accommodation

The property comprises of a ground floor retail unit and benefits from a large glass frontage, and a large storage area to the rear with a large roller shutter door for loading. The unit also benefits from some 1st floor office/communal space and kitchen area. The premises provide the following approximate net internal floor areas:

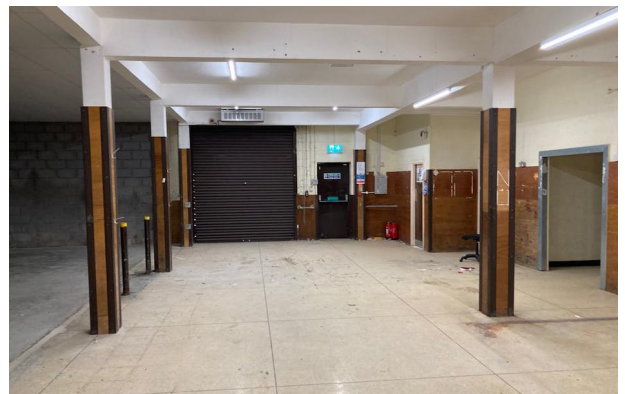
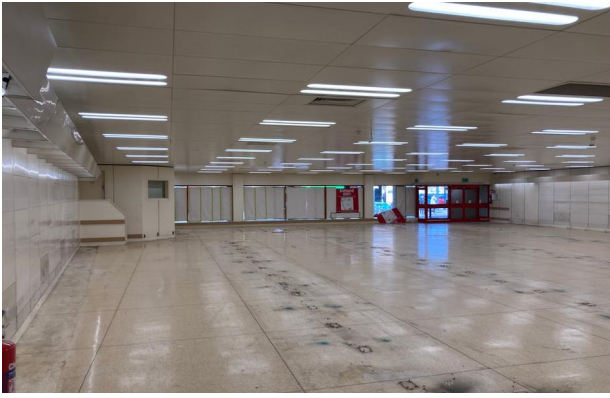
Name	Sq ft	Sq m
Ground - Retail	5,800	538.84
Ground - Storage/Loading	2,000	185.81
1st - Staff area / WCs	1,500	139.35
<b>Total</b>	<b>9,300</b>	<b>864</b>

## Nathank Chan

+447709 514101

nathank.chan@eu.jll.com





# Energy performance certificate (EPC)

Iceland Foods Plc  
25 Rivergate Arcade, Viersen Platz  
PETERBOROUGH  
PE1 1EL

Energy rating

**E**

Valid until: **4 July 2026**

Certificate number: **0360-0236-4039-4224-3002**

Property type

A1/A2 Retail and Financial/Professional services

Total floor area

905 square metres

## Rules on letting this property

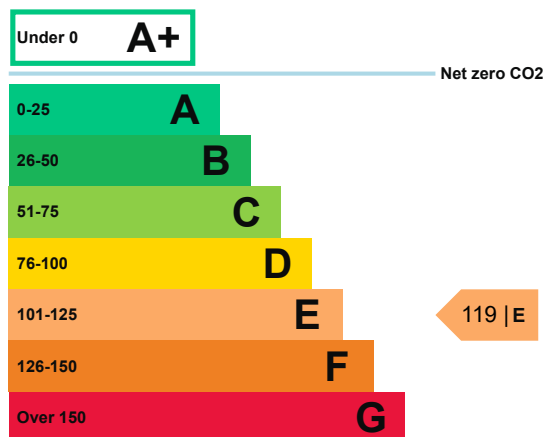
Properties can be let if they have an energy rating from A+ to E.

If a property has an energy rating of F or G, the landlord cannot grant a tenancy to new or existing tenants, unless an exemption has been registered.

From 1 April 2023, landlords will not be allowed to continue letting a non-domestic property on an existing lease if that property has an energy rating of F or G.

## Energy efficiency rating for this property

This property's current energy rating is E.



Properties are also given a score. The larger the number, the more carbon dioxide (CO2) your property is likely to emit.

## How this property compares to others

Properties similar to this one could have ratings:

If newly built

**36 | B**

If typical of the existing stock

**105 | E**

Properties are given a rating from A+ (most efficient) to G (least efficient).

## Breakdown of this property’s energy performance

Main heating fuel	Grid Supplied Electricity
Building environment	Air Conditioning
Assessment level	4
Building emission rate (kgCO2/m2 per year)	151.9

## Recommendation report

Guidance on improving the energy performance of this property can be found in the [recommendation report \(/energy-certificate/0394-2244-3240-3000-6603\)](#).

## Contacting the assessor and accreditation scheme

This EPC was created by a qualified energy assessor.

If you are unhappy about your property's energy assessment or certificate, you can complain to the assessor directly.

If you are still unhappy after contacting the assessor, you should contact the assessor's accreditation scheme.

Accreditation schemes are appointed by the government to ensure that assessors are qualified to carry out EPC assessments.

### Assessor contact details

Assessor's name	Doug Whiffen
Telephone	02476 233144
Email	<a href="mailto:doug.whiffen@wensleylawz.com">doug.whiffen@wensleylawz.com</a>

### Accreditation scheme contact details

Accreditation scheme	Elmhurst Energy Systems Ltd
Assessor ID	EES/007512
Telephone	01455 883 250
Email	<a href="mailto:enquiries@elmhurstenergy.co.uk">enquiries@elmhurstenergy.co.uk</a>

### Assessment details

Employer	Wensley & Lawz Ltd
Employer address	116 Walsgrave Road Coventry CV2 4ED
Assessor's declaration	The assessor is not related to the owner of the property.
Date of assessment	27 April 2016
Date of certificate	5 July 2016

---