



7 Portman Mews South

7 Portman Mews South, London, W1H 6AY

Refurbished first floor offices with Boardroom, CEO office, 4 private offices and a kitchen. Modern high spec floor with lift

3,668 sq ft
(340.77 sq m)

- Fitted meeting rooms
- Refurbished
- New LED lights
- Lift
- Commissionaire
- Great natural light
- Bike store and shower

7 Portman Mews South, London, W1H 6AY

Summary

Available Size	3,668 sq ft
Rent	£65 per sq ft
Rates Payable	£30.01 per sq ft
Rateable Value	£215,000
Service Charge	£17.50 per sq ft Estimated
Car Parking	N/A
VAT	Applicable
Estate Charge	N/A
EPC Rating	D (77)

Description

A refurbished first floor office with raised floors, new LED lighting and a lift, arranged as a number of private offices and meeting rooms with a dine-in kitchen. Ground floor receptionist. Bike store and shower in lower ground floor.

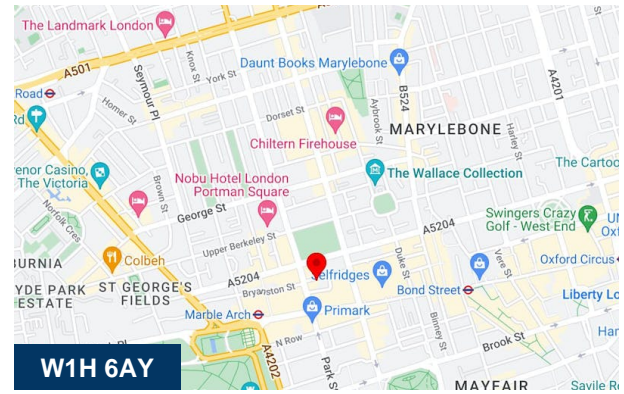
Location

Situated on Portman Mews South which runs parallel to the south side of Portman Square in the heart of Marylebone, just north of Oxford Street. Bond Street underground is a short distance away.

Accommodation

The accommodation comprises the entire first floor of 3,668 square feet

Name	sq ft	sq m	Availability
1st	3,668	340.77	Let
Total	3,668	340.77	



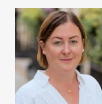
Viewing & Further Information



Mike MacKeith

07831 361 722

mike.mackeith@mallamlondon.com



Emma Byrne

07715516788 | 07715516788

emma.byrne@mallamlondon.com