

3 THEOBALD COURT

THEOBALD STREET, BOREHAMWOOD, WD6 4RN

FOREST
REAL ESTATE

TO LET

1,200 SQ FT

Newly Refurbished Open Plan Office

Key Features

- Self contained ground floor office
- Two allocated parking spaces
- Wood flooring
- Gas central heating
- 3 phase power
- A variety of cafés and eateries along Shenley Road are just moments away
- Newly refurbished
- Two WC's
- Newly installed doubled glazed sash windows
- Air conditioning throughout
- Elstree & Borehamwood Station can be reached within a short walk

Ground Floor, 3 Theobald Court, Theobald Street
Borehamwood, WD6 4RN





Description

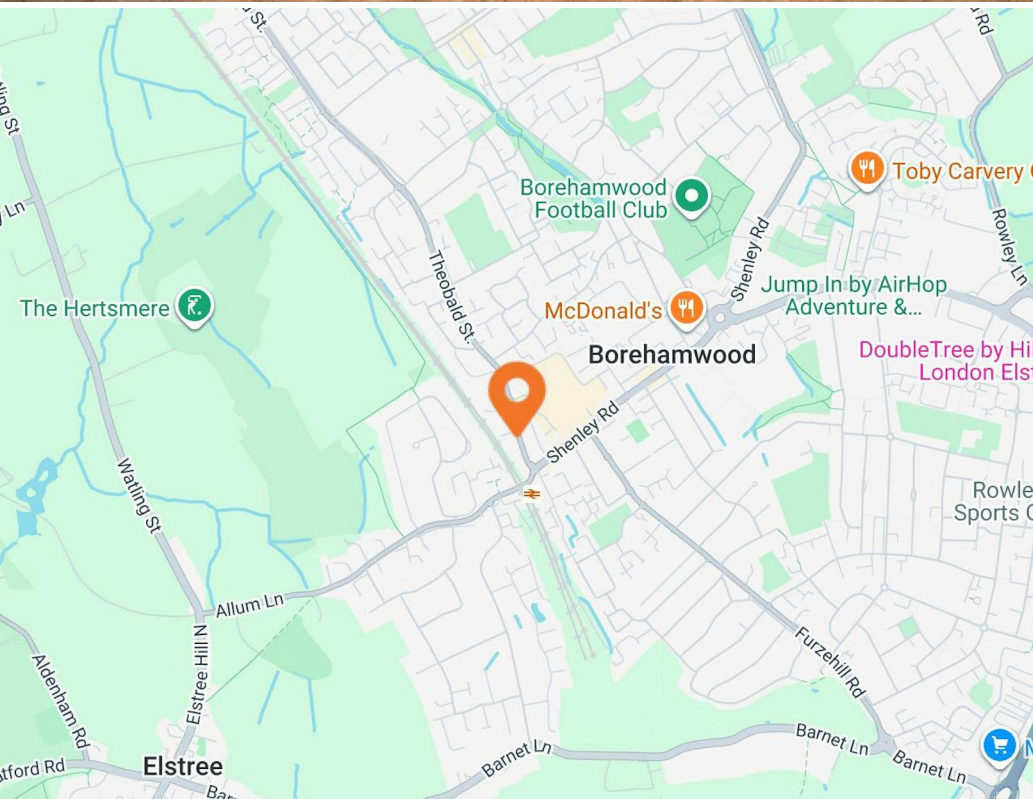
The property comprises a newly refurbished open-plan office suite situated on the ground floor of this attractive building. The accommodation benefits from a private entrance at street level, an internal meeting room, and attractive sash windows to both the front and rear elevations, providing excellent natural light throughout.

The office has newly installed air conditioning, two demised WCs, and a tea point. Externally, the property benefits from two allocated parking spaces.

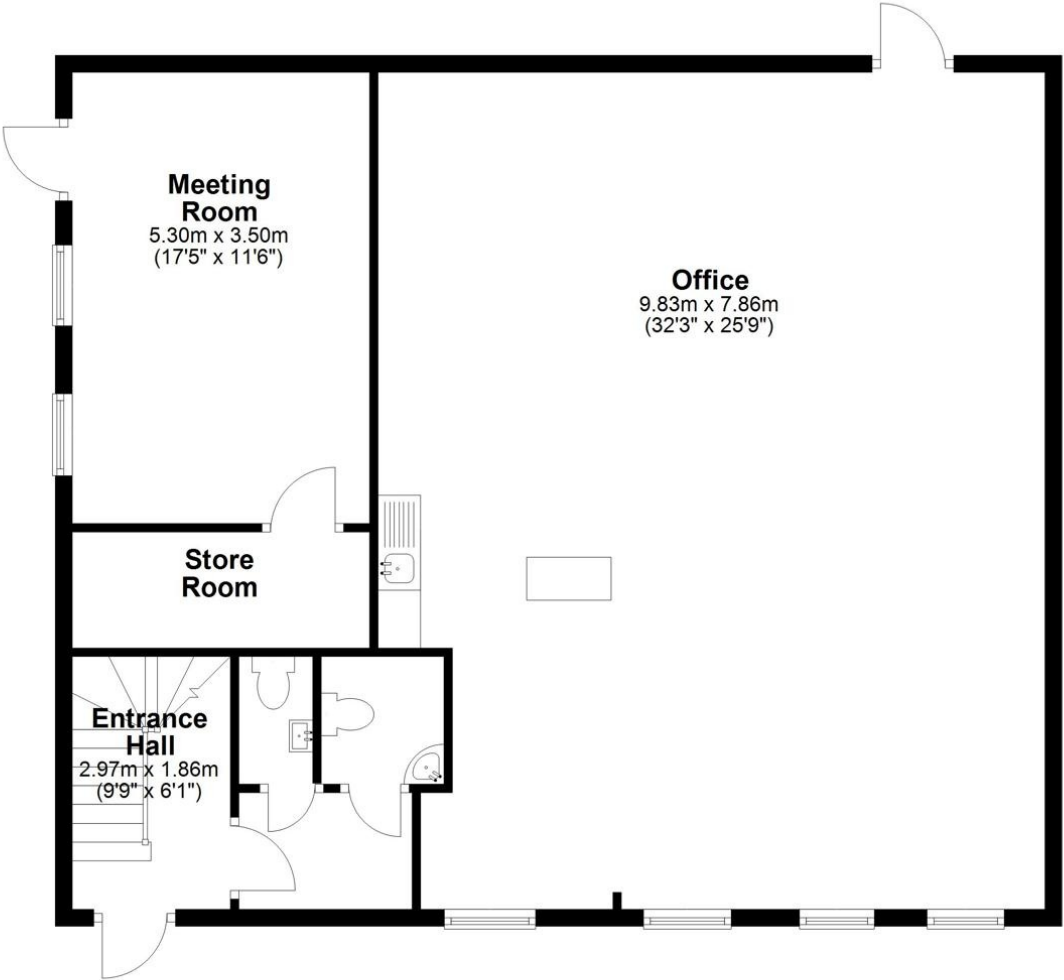
Location

Located in the heart of Borehamwood, Theobald Court is a well-established business development comprising seven adjoining office buildings, offering a professional and accessible working environment. Positioned prominently on Theobald Street, the scheme benefits from a central location within one of Hertfordshire's most recognised commercial hubs.

The development is ideally situated just a short walk from Borehamwood railway station, providing direct Thameslink services into Central London and surrounding areas, making it highly convenient for both staff and visitors. A wide range of local amenities are also within easy reach, including cafés, restaurants, retail facilities and leisure amenities, all contributing to an excellent occupier experience.







Availability

Lease New Lease

Rent £39,500 per annum

Rates £10,692 per annum

Service Charge £1,500 per annum

VAT Applicable

EPC C (69)

Contact

Zach Forest

020 3370 4470 | 07890 209 397

zach@forestrealestate.co.uk

Ethan Shine

020 3355 1555 | 07792 781 096

ethan@forestrealestate.co.uk

London Office Team

55 St John Street, London, EC1M 4AN

020 3370 4470

London Industrial Team

1 Bridge Lane, London, NW11 0EA

020 3355 1555

Hertfordshire Team

Oak House, Reeds Crescent, Watford, WD24 4QP

01923 911 007

www.forestrealestate.co.uk

info@forestrealestate.co.uk

Ground Floor, 3 Theobald Court, Theobald Street
Borehamwood, WD6 4RN

F O R E S T
REAL ESTATE

The above information contained within this brochure is subject to contract. These particulars are for general information only and do not constitute any part of an offer or contract. All statements contained therein are made without responsibility on the part of the vendors or lessors and are not to be relied upon as statement or representation of fact. Intending purchasers or lessees must satisfy themselves, by inspection, or otherwise, as to the correctness of each of the statements of dimensions contained in these particulars. Generated on 18/05/2026