



Stimpsons

2 Penta Court, Station Road, Borehamwood, WD6 1SL

To Let | 664 sq ft

1st Floor Offices To Let Opposite Elstree and Borehamwood Station

Summary

- Rent: £23,250 per annum
- Business rates: £6,156 per annum
- Service charge: £460 per month This includes gas, electricity and water
- VAT: Applicable
- EPC: C (70)
- Lease: New Lease

Description

Penta Court, located across from Elstree and Borehamwood Station, provides a roomy and practical workspace located on the 1st floor.

Among the facilities are meeting rooms, air conditioning, breakout areas, fast internet, and round-the-clock access with entry phone.

Location

Penta Court, which is centrally located in Borehamwood, provides excellent commercial office space with easy access to local services and transportation. Excellent access to central London and beyond is a feature of the property. Tenants can locate a variety of stores, cafes, and dining establishments close by, such as a Sainsbury's and other restaurants on Shenley Road.

Accommodation

Name	sq ft	sq m
1st	664	61.69
Total	664	61.69

Key Points

- Opposite Elstree & Borehamwood train station
- LED lighting
- Entry phone and alarm system
- 3 parking spaces
- Air conditioning
- WC and Kitchen
- Good natural lighting
- Short walking distance to town centre amenities
- Floor mounted boxes with power

Terms

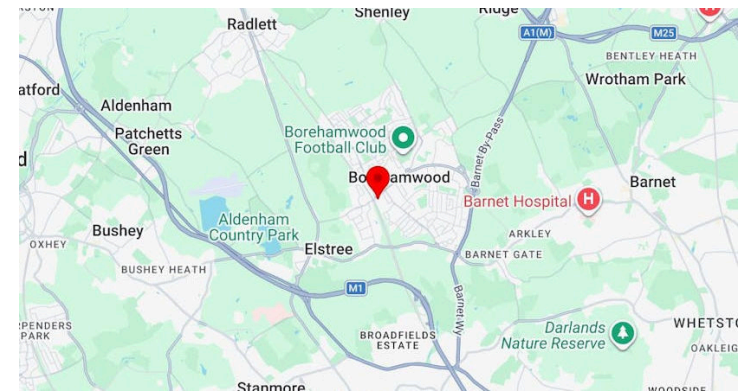
The property is available by way of a new effective full repairing and insuring lease, subject to a service charge, for a term to be agreed by the incoming tenant.

Service Charge

The service charge budget includes all utilities available to the suite and currently runs at £470 per month plus VAT.

Specifications

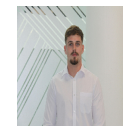
Total parking spaces: 3



Further information

- [View details on our website](#)

Contact & Viewings



Harrison Hobbs
01923 604 025 | 07990 052 413
harrison.hobbs@stimpsons.co.uk



Graham Payne
| 07801 098096
graham.payne@stimpsons.co.uk

Viewings

Viewings strictly by appointment with Stimpsons (Monday to Friday 9.00-17.30)

