



35 Woodseer Street

Spitalfields, London, E1 5HA

2-Bedroom 2 Bathroom in the Heart of Spitalfields

2 Beds

- Excellent Natural Light
- Great Local Amenities
- 2 Bedroom
- 2 Bathroom
- Terrace

35 Woodseer Street, Spitalfields, London, E1 5HA

Summary

Available Size	2 Beds
Rent	£2,900 per month
EPC Rating	Upon enquiry

Description

This spacious 2-bedroom apartment offers a bright, open-plan living area with excellent natural light and access to the private terrace. It features two well-proportioned bedrooms and a main bathroom with a bath and en suite. It's an ideal home in a sought-after location and a fantastic opportunity for those looking to live in one of London's most dynamic neighbourhoods.

Location

The property is located on the North side of Woodseer Street, a quiet street just off Brick Lane within walking distance of Bishopsgate, Shoreditch, Spitalfields and the City. The area offers an abundance of shops, cafés, bars and restaurants. The property is also well served by excellent public transport links with Liverpool Street, Aldgate East, Whitechapel and Shoreditch High Street tube and rail stations within close proximity.

Accommodation

The accommodation comprises the following areas:

Name	Availability
1st - Flat 1	Available

Viewings

Strictly by appointment only.

Terms

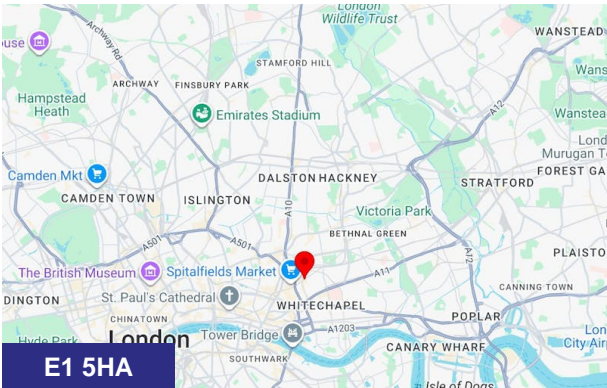
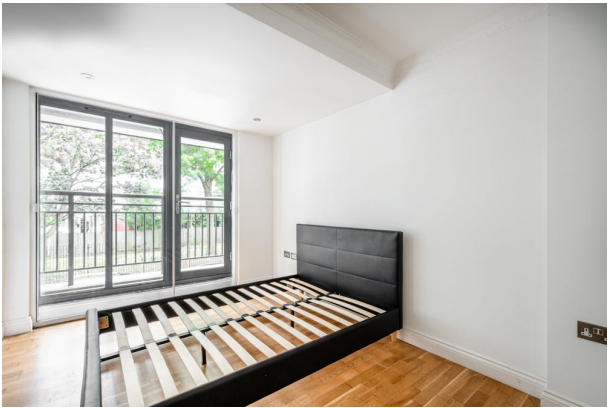
Standard A.S.T Contract - 12 months

Availability

Now

Furniture

Offered unfurnished



Viewing & Further Information

Arthur Nowicki
0207 377 8989 | 07792711461
arthur@tarn-tarn.co.uk