



29 Portland Place

29 Portland Place, London, W1B 1QB

**Self-contained HQ building
on Portland Place. Suitable
for office, members club and
medical uses.**

11,984 sq ft

(1,113.35 sq m)

- Self-contained HQ building
- Wood panelled Reception/waiting area
- Staff restaurant
- Fitted kitchen
- Air conditioning
- Ornate cornicing throughout
- Stately rooms
- Meeting rooms/boardrooms

29 Portland Place, London, W1B 1QB

Summary

Available Size	11,984 sq ft
Rates Payable	£22 per sq ft
Service Charge	N/A
EPC Rating	Upon Enquiry

Description

The accommodation spans basement to third floor of a beautiful Georgian building on Portland Place. The space is currently used and fitted out as an office.

The property comprises 2 beautiful ball rooms with an abundance of natural light with expansive floor to ceiling heights as well as contemporary open plan office accommodation.

Location

The property is located on prime position on Portland Place. Its location makes it ideal for a range of uses from office, medical and members club. It is situated close to Harley Street, University of Westminster, BBC, and Oxford Circus.

Accommodation

The accommodation comprises of the following

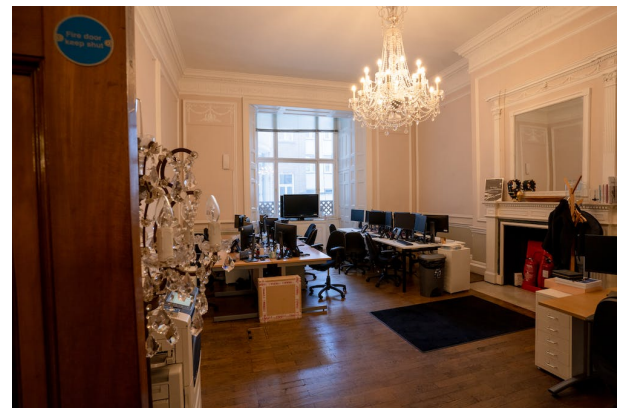
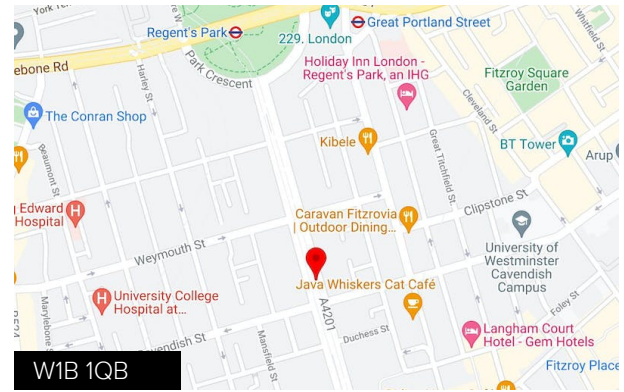
Name	Sq ft	Sq m	Availability
3rd	1,551	144.09	Available
2nd	1,535	142.61	Available
1st	2,775	257.81	Available
Ground	2,696	250.47	Available
Lower Ground	3,427	318.38	Available
Total	11,984	1,113.36	

Viewings

Strictly by appointment only.

Terms

Lease Inside the Act until December 2026



Viewing & Further Information



Harry Hopson

07587 539 047

harry.hopson@nmrk.com



Percy Clarke

02074629104 | 07826672309

percy.clarke@nmrk.com

NEWMARK







