



Front Elevation

1BA1 - P421



Front Elevation



Location

The property is situated within the new Hareshill development on Hitches Lane, positioned between Fleet town centre and Crookham Village. The location benefits from excellent regional connectivity with the M3 motorway easily accessible and both Fleet and Winchfield mainline railway stations just a short drive away, providing direct links to London Waterloo in under an hour.

Description

This upcoming commercial opportunity comprises a self contained, ground floor unit part of a new mixed-use development and benefits from flexible Class E planning permission making it suitable for a variety of neighborhood-focused retail, business or leisure uses.

The premises will feature a prominent, glazed street frontage providing good visibility and an adaptable open-plan internal space.

Terms

New Lease

Rent

£18,500 per annum

EPC

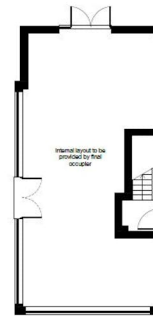
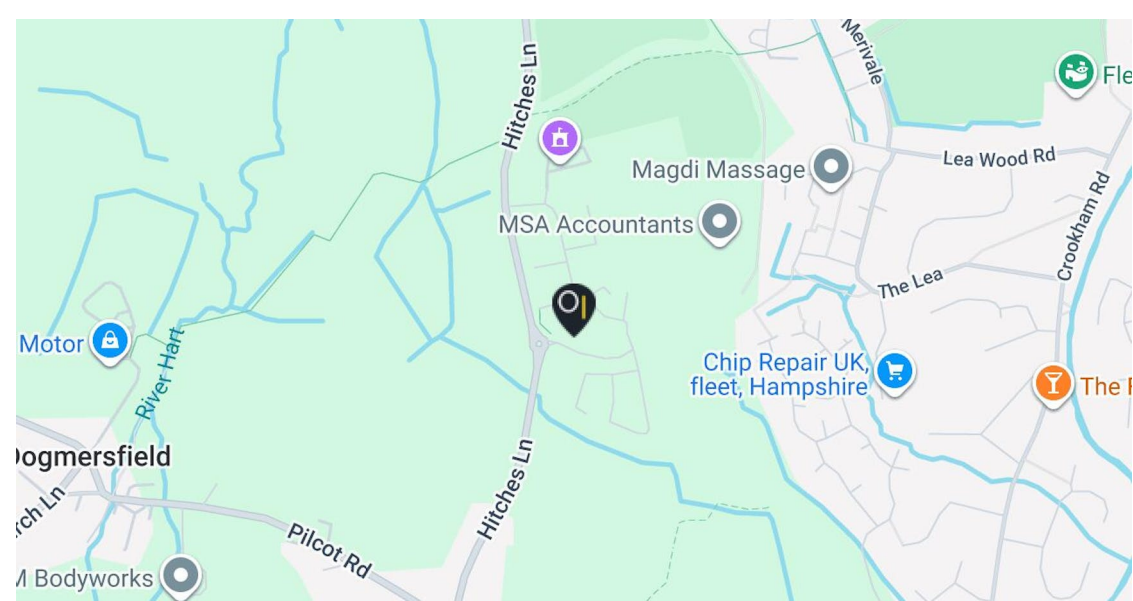
EPC exempt - Currently being constructed or undergoing major refurbishment

Rates & Charges

N/A

Legal costs

Each party to bear their own legal costs incurred in the transaction.



Ground Floor Plan



First Floor Plan



Contact

Kieran Morgan

T: 01483 300176

M: 07904377405

E: Kieran@owenisherwood.com

Alex Bellion

T: 01483 300176

M: 07971 756068

E: alex@owenisherwood.com

owenisherwood.com | 01483 300 176

1 Wey Court, Mary Road, Guildford, Surrey GU1 4QU

These particulars do not constitute, or form any part of, any offer or contract, and whilst all the information given is believed to be correct, all interested parties must satisfy themselves of its accuracy. All prices and rents are quoted exclusive of VAT, unless otherwise stated