



Unit 32-34

Beacon Court, Newark, NG22 9QL

**Industrial unit available
within popular and
established estate**

4,446 sq ft
(413.05 sq m)

- 4,446 sq ft
- Good access to A614 and A616
- Four loading doors
- Allocated parking
- Popular industrial estate
- Secure shared yard

Unit 32-34, Beacon Court, Newark, NG22 9QL

Summary

Available Size	4,446 sq ft
Rent	£29,000 per annum
Rateable Value	£24,250
Service Charge	£4,500 per annum
VAT	Applicable
EPC Rating	Upon enquiry

Description

Units 28-34 Beacon Court provide a warehouse which is suitable for a range of industrial uses. The unit benefits from four roller doors, three phase power, ample eaves height and allocated parking.

The property is a modern end-of-terrace industrial unit of steel portal frame construction with brick elevations. There are separate personnel doors and it is located within a secure shared yard.

Location

The unit is located in Beacon Court, a popular and established industrial estate in Ollerton, Nottinghamshire. It is located close to the A616 which provides easy access to the A614 and A1.

Newark, Mansfield and Nottingham are all easily accessed from Beacon Court due to its connectivity.

A1 - 6.5 miles

Mansfield - 10.5 miles

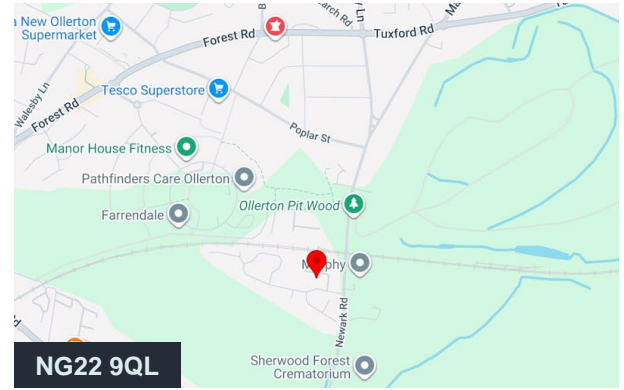
Newark-on-Trent - 12.7 miles

Nottingham 21.4 miles

Accommodation

The accommodation comprises the following areas:

Name	sq ft	sq m	Availability
Ground	4,446	413.05	Available
Total	4,446	413.05	



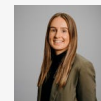
Viewing & Further Information



Jonathan Butler

01302 243 926 | 07580 323 813

jonathan.butler@fishergerman.co.uk



Jess Berry

01302 493699 | 07816 264496

jess.berry@fishergerman.co.uk