



**GROUND FLOOR OFFICE SPACE APPROX. 1,500 SQ FT WITH 6
CAR PARKING SPACES, LESS THAN 1/2 MILE TO THE M66
MOTORWAY**

Rochester House

Hollins Brook Park, Bury, BL9 8RN

Office

TO LET

1,500 sq ft

(139.35 sq m)

- SELF CONTAINED GROUND FLOOR OFFICE SPACE
- CLOSE TO NORTH WEST MOTORWAY NETWORK
- OPEN PLAN AREA WITH SEPARATE PRIVATE OFFICES
- 6 DESIGNATED PARKING SPACES

Rochester House, Hollins Brook Park, Bury, BL9 8RN

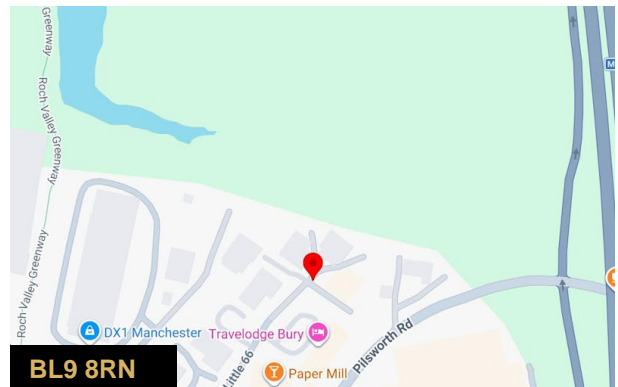
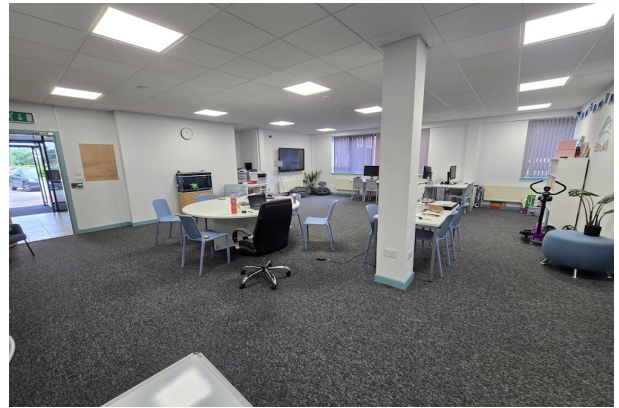
Summary

Available Size	1,500 sq ft
Rent	£19 per sq ft Including service charge
Rates Payable	£8.21 per sq ft
Rateable Value	£28,500
Service Charge	N/A
Car Parking	N/A
VAT	Applicable
Estate Charge	N/A
EPC Rating	Upon enquiry

Description

A great opportunity to relocate your business to this ground floor office space which is approx. 1,500 sq ft. It has a spacious office area with kitchen, W.C. and separate offices/meeting rooms included.

The property is located less than 1/2 mile from the M66 motorway making it easily accessible for staff and clients alike. The space is self contained and would suit a variety of different uses.



Viewing & Further Information

**son
rier**
ERCIAL

Stuart Pearson

0161 764 4440

commercial@pearsonferrier.co.uk

More properties @ [pearsonferrier.co.uk](https://www.pearsonferrier.co.uk)