



Unit 4 Ash Street

The Warehouse, Northwich, CW9 5LL

**Small warehouse, workshop
with office and secure yard**

1,609 sq ft
(149.48 sq m)

Unit 4 Ash Street, The Warehouse, Northwich, CW9 5LL

Summary

Available Size	1,609 sq ft
Rent	£16,090 per sq ft
Rateable Value	£8,500
VAT	To be confirmed
Legal Fees	Each party to bear their own costs
EPC Rating	Upon enquiry

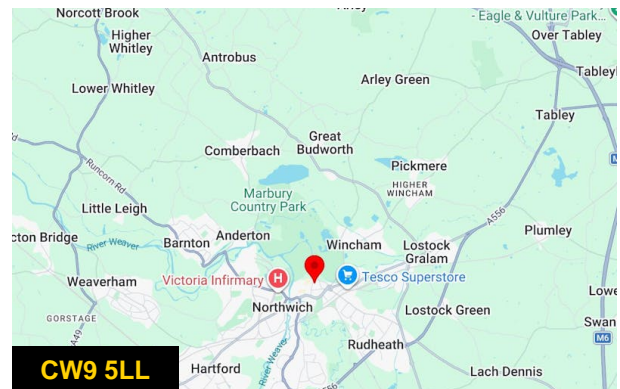
Description

The property comprises of a small warehouse unit:

- Excellent town centre location
- Recently refurbished
- Storage workshop unit with secure storage room
- Electric rolled shutter to internal small courtyard
- Bi folding office doors
- Wall mounted heaters
- Single phase electricity
- Toilet
- Kitchenette
- Secure yard

Location

Located on Ash Street within close proximity to Northwich Town Centre and Northwich Railway Station.



Viewing & Further Information



Harry Hehir

01625 800066 | 07392 582173

hh@willsill.co.uk

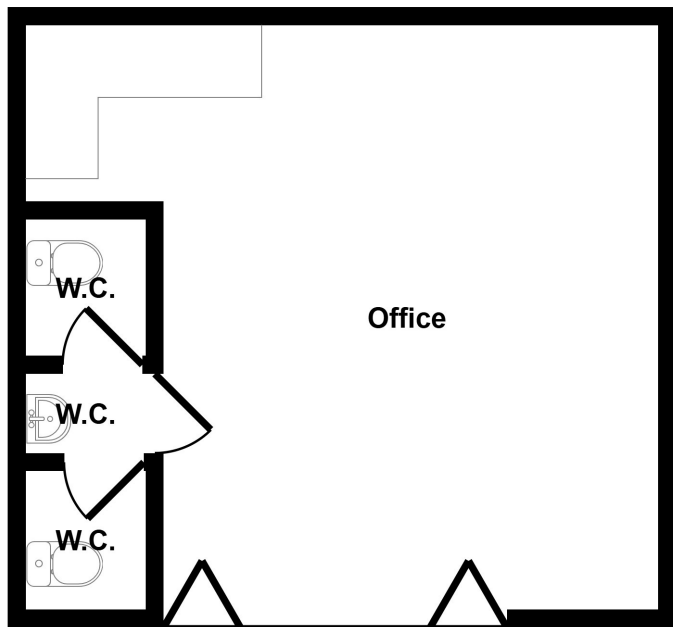


Charlie Williams

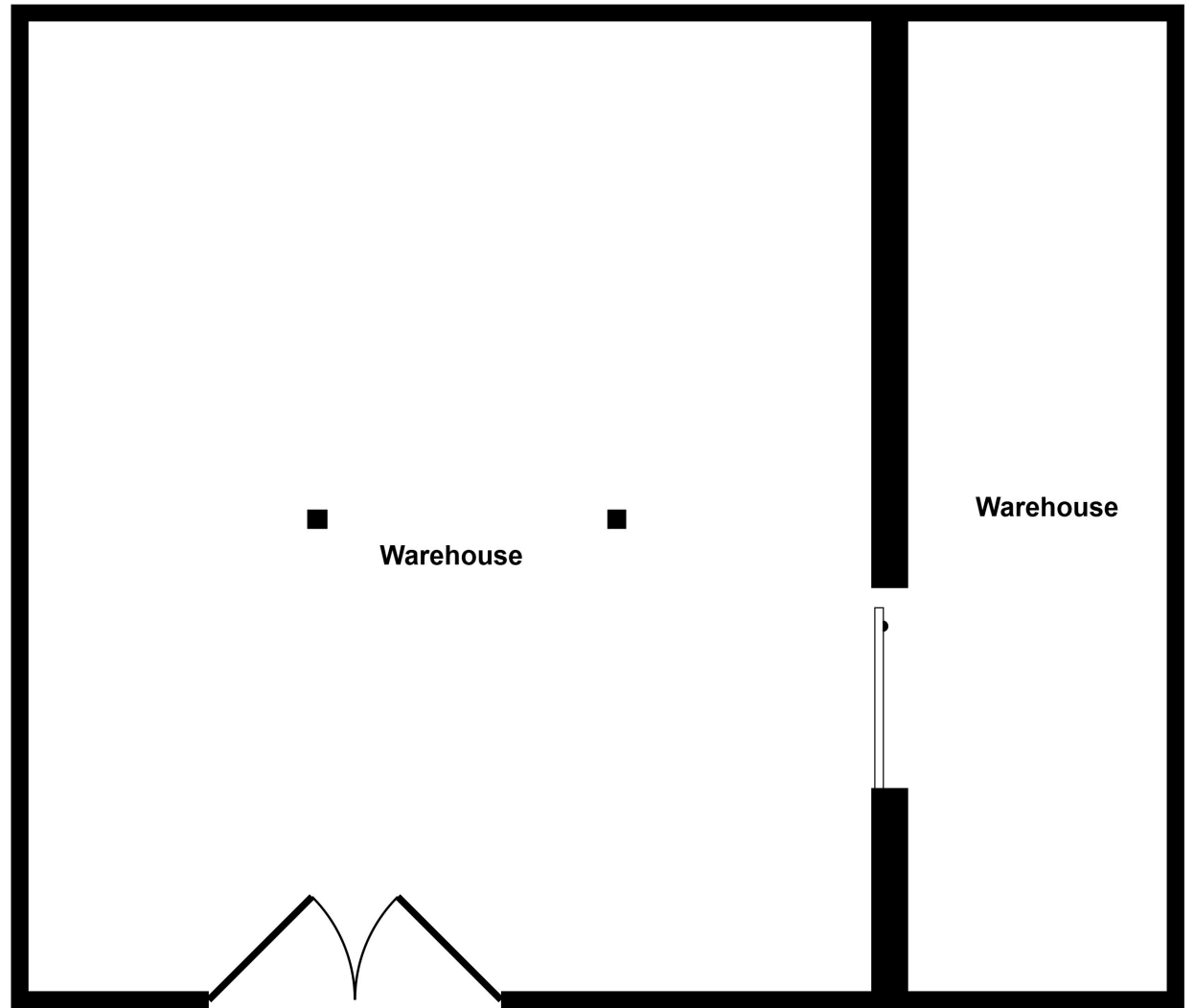
07766003311

cw@willsill.co.uk





Floorplan



Garage/Storage

This floorplan is only for illustrative purposes and is not to scale. Measurements of rooms, doors, windows, and any items are approximate and no responsibility is taken for any error, omission or mis-statement. Icons of items such as bathroom suites are representations only and may not look like the real items. Made with Made Snappy 360.