



## 40 Leadenhall Street

London, EC3A 2BJ

**Huckletree have a number of self-contained office units remaining in this brand-new best-in-class building.**

**821 to 15,003 sq ft**  
(76.27 to 1,393.82 sq m)

- Best-in-class building
- Flexible Terms
- Excellent F&B offering
- Bookable Meeting Rooms
- Industry Leading Amenity

# 40 Leadenhall Street, London, EC3A 2BJ

## Summary

<b>Available Size</b>	821 to 15,003 sq ft
<b>Rent</b>	£275 - £299 per sq ft
<b>EPC Rating</b>	Upon enquiry

## Description

Huckletree at 40 Leadenhall redefines excellence. As London's premier architectural achievement in the Square Mile, this isn't just workspace – it's the gold standard for global business ecosystems. Every detail, from its striking design to its world-class hospitality, is built to redefine how businesses work, connect, and thrive. From unmatched smart-building technology to hospitality rivalling five-star establishments, every element has been engineered to surpass expectations.

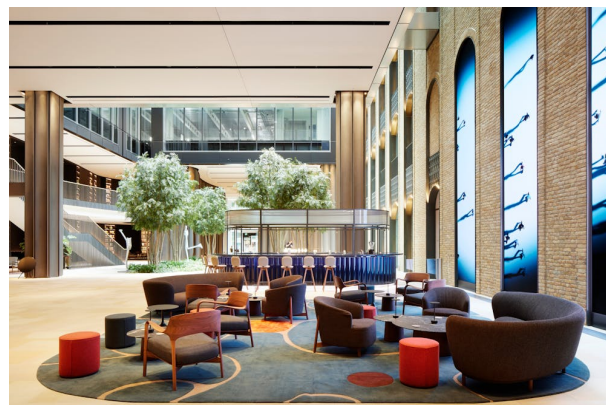
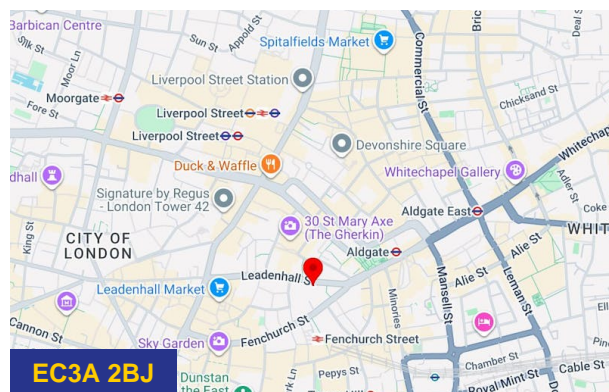
## Location

Located just minutes Bank, Liverpool Street, and Fenchurch Street stations, 40 Leadenhall places you at the epicentre of international commerce.

## Accommodation

The accommodation comprises the following areas:

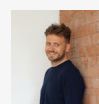
Name	sq ft	sq m	Availability
2nd - 2.01 - 54 desks, 3 MRs, 4PBs	3,384	314.38	Available
2nd - 2.03 - 56 desks, 3 MRs, 3 PBs	3,121	289.95	Under Offer
2nd - 2.04 - 50 desks, 2MRs, 3PBs	2,638	245.08	Available
2nd - 2.06 - 38 desks, 2MRs, 2PBs	2,189	203.36	Under Offer
2nd - 2.07 - 46 desks, 2MRs, 2PBs	2,850	264.77	Available
2nd - 2.08 - 18 desks & 1PB	821	76.27	Available
<b>Total</b>	<b>15,003</b>	<b>1,393.81</b>	



## Viewing & Further Information



**Luke Parkinson**  
07464715644  
Luke.Parkinson@kontor.com



**Ben Orchard-Smith**  
07557988115  
ben@kontor.com