

Office To Let

£35,000 per annum

1,259 sq ft

**1 Lochaline Street, London,
W6 9SJ**

TO LET - A striking self-contained building in the heart of Hammersmith.

- Dated, yet functional office building
 - Arranged across two floors
 - Private entrance with a range of meeting rooms
 - Limited rent free period available
 - Highly convenient, yet discreet W6 location
-



1 Lochaline Street, London, W6 9SJ

Summary

- Rent: £35,000 per annum
- Lease: New Lease

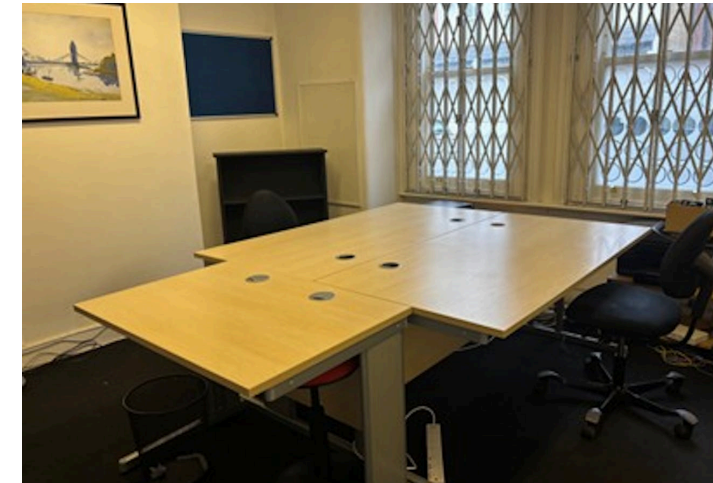
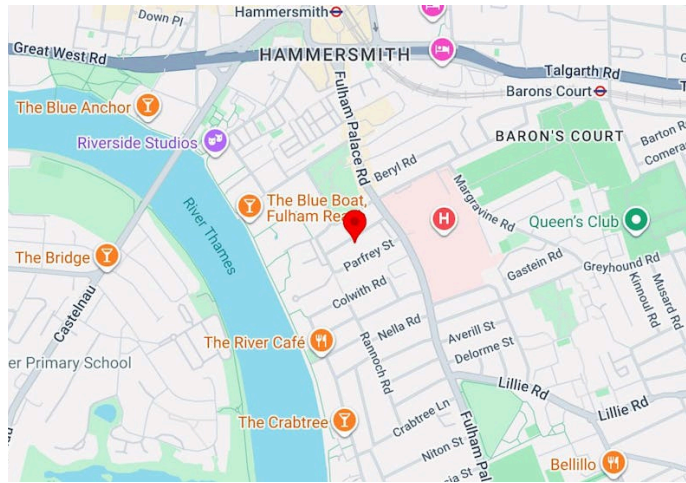
Further information

- [View Microsite](#)

Contact & Viewings

Adam Stackhouse
07889 510036
adam@meridiancp.co.uk

Alex Ogilvie
07414 281406
alex@meridiancp.co.uk



Description

We are pleased to bring to the market this flexible and striking two-storey self-contained office building located in Hammersmith, W6. Enjoying its own private entrance the unit is offered in relatively dated internal order and enjoys a discreet position within close proximity of Hammersmith Central.

Location

Hammersmith is one of West London's most iconic and well-connected suburbs, playing host to cultural and commercial highlights whilst still maintaining a friendly community atmosphere. Home to eclectic productions at the Lyric theatre and rock shows at the Apollo concert hall, as well as gastro pubs and plenty of eateries. There are significant and highly convenient transport links within the Broadway which connect this superb location with Central London and Heathrow.

Terms

Available: Immediately upon completion of legal formalities.

VAT: The property is not elected for VAT.

Local Authority: London Borough of Hammersmith & Fulham

Business Rates: To Be confirmed.

