



Unit 3 Ash Street

The Warehouse, Northwich, CW9 5LL

**Newly refurbished unit with
secure yard**

814 sq ft
(75.62 sq m)

Unit 3 Ash Street, The Warehouse, Northwich, CW9 5LL

Summary

Available Size	814 sq ft
Rent	£8,140 per annum
Rateable Value	£4,650
VAT	To be confirmed
Legal Fees	Each party to bear their own costs
EPC Rating	Upon enquiry

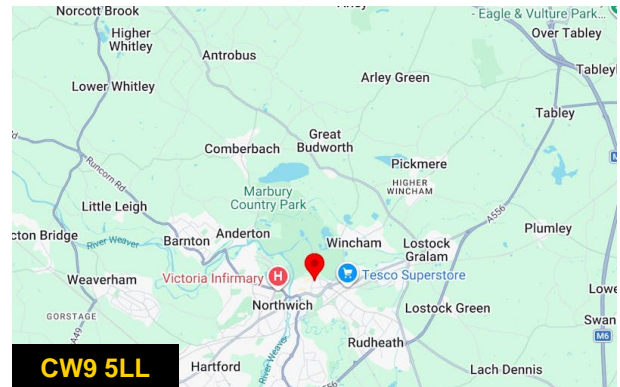
Description

The property comprises of a small warehouse unit:

- Excellent town centre location
- Newly refurbished
- Block construction with profile metal sheet roofing
- Warehouse with small store room
- Electric rolled shutter to internal small courtyard
- Single phase electricity
- One toilets
- Kitchen
- Secure yard

Location

Located on Ash Street within close proximity to Northwich Town Centre and Northwich Railway Station.



Viewing & Further Information



Harry Hehir

01625 800066 | 07392 582173

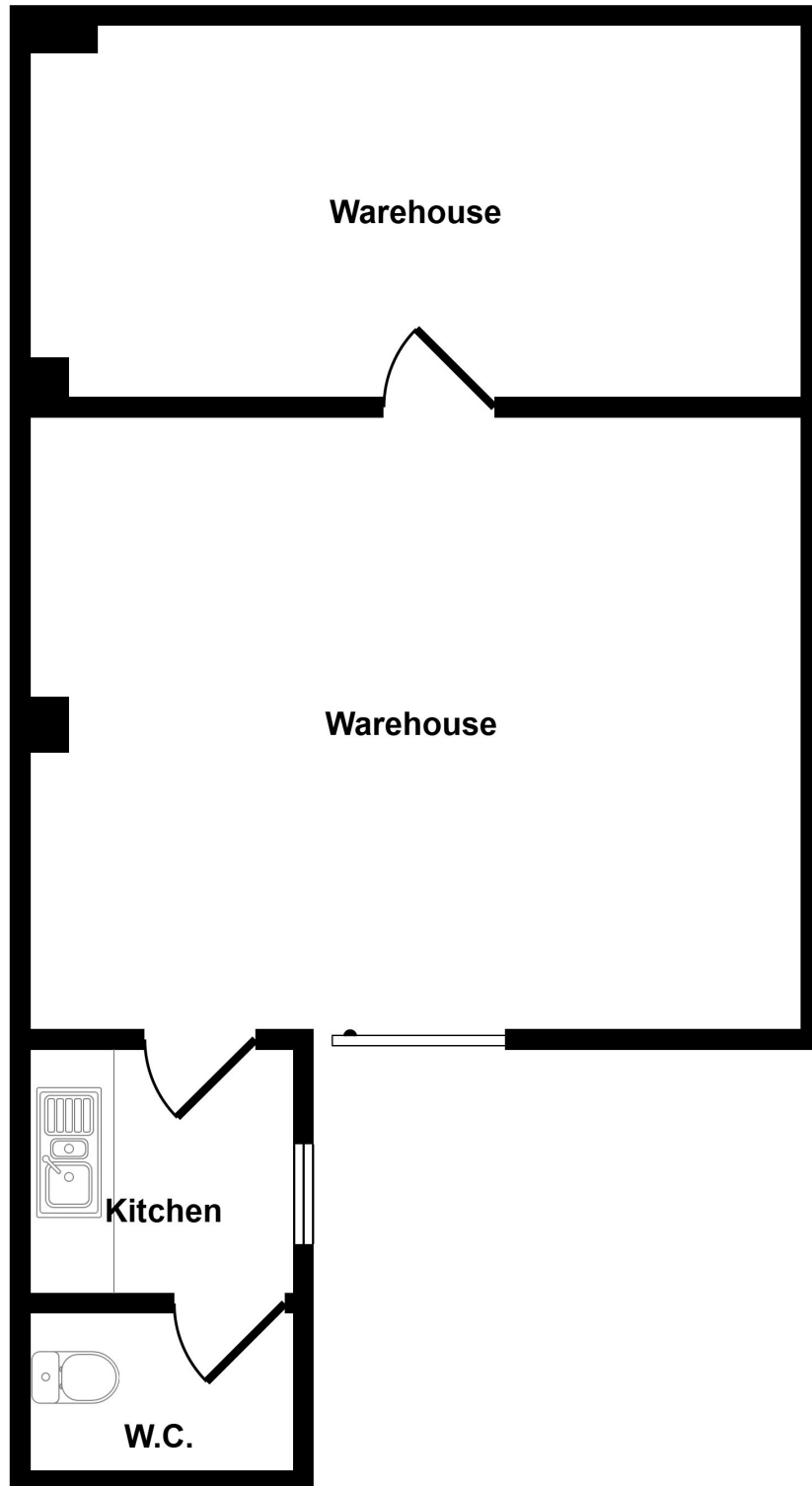
hh@willsill.co.uk



Charlie Williams

07766003311

cw@willsill.co.uk



Floorplan

This floorplan is only for illustrative purposes and is not to scale. Measurements of rooms, doors, windows, and any items are approximate and no responsibility is taken for any error, omission or mis-statement. Icons of items such as bathroom suites are representations only and may not look like the real items. Made with Made Snappy 360.