

HMS Wellington

Victoria Embankment, London, WC2R 2PN

Opportunity to Create The Most Amazing Venue For Bar/Restaurant/Club/Events On A Restored WW2 Battle Ship - New Lease!

22,003 sq ft
(2,044.15 sq m)

- Prime Central Location on Embankment
- Open Air Decks with Amazing Views
- Fully Fitted Kitchen in Situ
- Bedrooms on Board
- License in Place
- Ability to Run Separate Functions

HMS Wellington, Victoria Embankment, London, WC2R 2PN

Summary

Available Size	22,003 sq ft
EPC Rating	Upon enquiry

Description

HMS Wellington provides a rare opportunity to lease a unique hospitality venue in a prime Central London riverside location. The vessel offers characterful accommodation arranged over multiple decks, providing flexible space suitable for a bar, restaurant, event venue, or a combination of hospitality uses, subject to the necessary consents.

The accommodation comprises a variety of internal areas capable of supporting dining, drinking and private events, complemented by extensive external deck space offering exceptional views across the River Thames and London's skyline. The property's distinctive heritage, combined with its prominent position and excellent accessibility, provides operators with the opportunity to establish a landmark destination in one of London's most sought-after waterfront locations.

Location

HMS Wellington occupies a prominent berth on the Victoria Embankment, directly on the north bank of the River Thames in the heart of Central London. The property benefits from an exceptional position between the City of London and the West End, within close proximity to major office occupiers, renowned cultural attractions, and established leisure and hospitality destinations. The surrounding area experiences significant weekday footfall from office workers, together with strong visitor and tourist demand throughout the year.

The vessel is well connected by public transport, with Temple, Embankment, Blackfriars and Charing Cross stations all within comfortable walking distance, providing access to the London Underground, National Rail and the Elizabeth line via nearby interchanges. The combination of a prestigious riverside setting, excellent connectivity and a diverse customer catchment makes HMS Wellington an outstanding opportunity for a hospitality operator seeking a landmark London destination.

Accommodation

The accommodation comprises the following areas:

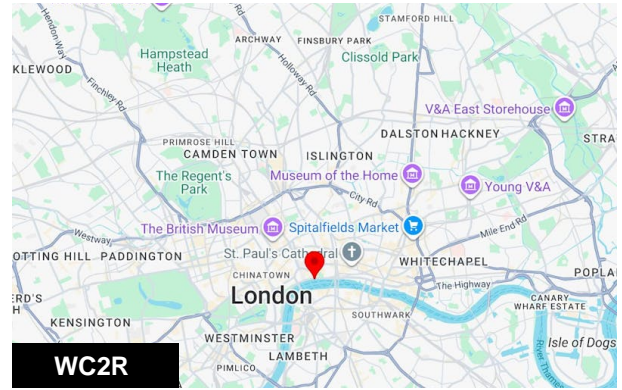
Name	sq ft	sq m
Lower Ground - Restaurant	3,700	343.74
Basement	3,600	334.45
Ground - Reception	3,700	343.74
1st - Restaurant	3,714	345.04
2nd - Rooftop	6,428	597.18
3rd - Rooftop	861	79.99
Total	22,003	2,044.14

Tenure

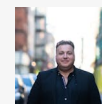
New lease/license for a term to be arranged

Rent

£125,000pax plus turnover percentage to be discussed



Viewing & Further Information



Morris Greenberg

0207 100 5520

morris@cdgleisure.com

There is a service charge of £120,000pa - full breakdown to be disclosed upon application

Premises License

There is a license in place allowing the sale of alcohol every day of the week until midnight

Holding Deposit

A holding deposit will be required to secure the property; the deposit will buy a period of exclusivity and will be held in the CDG Leisure client account.