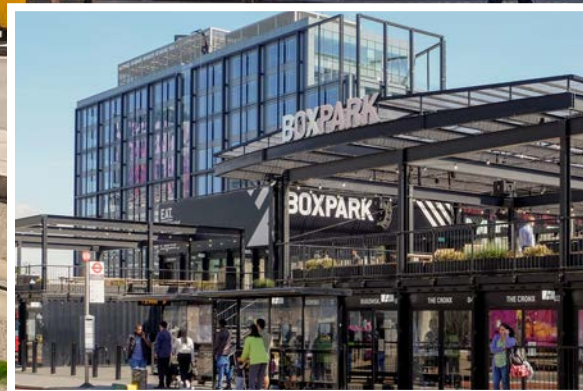


Suffolk House

Offices to let



George Street Croydon CR0 1PE



Cost-effective office suites

Description

Suffolk House is a low rise building on ground and three upper floors offering vast floor plates and airy light office space. There are two main entrances into the building this offering complete flexibility and the ground floor areas are mainly retail including a Sainsbury's store. The building offers a range of offices with floors of 25,000 sq ft arranged around a central light well as well as smaller suites. The offices are manned by security and competitively priced.

Location

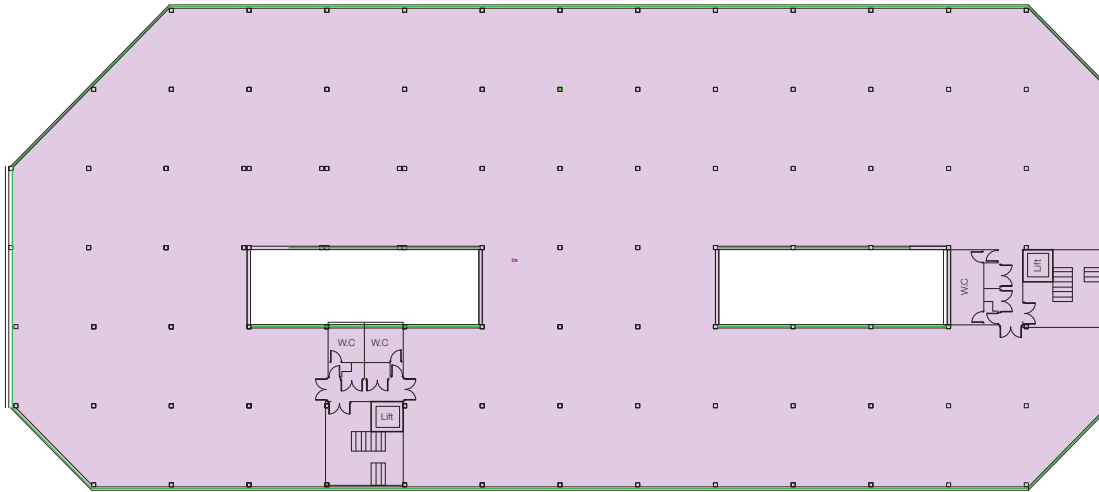
Suffolk House is located in a prominent position on the corner of George Street with Park Lane within the centre of Croydon and the prime office area of East Croydon. The mainline rail station at East Croydon is two minutes' walk and George Street is one of the main tram routes in the town. The two key shopping malls Centrale and Whitgift Centre are within five minutes' walk, as is the main shopping zone in-between the two retail centres. The two shopping centres will be redeveloped by Westfield and Hammerson to provide a new retail heart to the town.

Accommodation

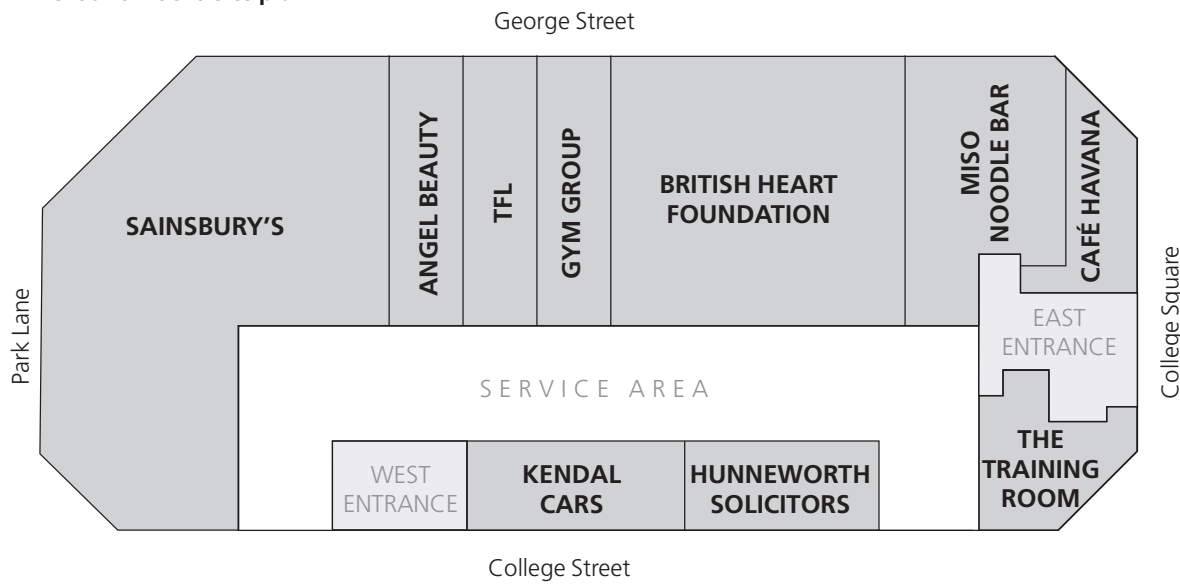
- Cost effective accommodation
- Security / Commissionaire
- CCTV and access control
- Lifts
- Central heating
- Suspended ceilings
- Fluorescent lighting
- Carpeted
- Newly refurbished toilets



Typical upper floor



Ground floor / site plan



Lease

New leases direct from the landlord on terms to be agreed.

Availability

Please refer to the letting agents for availability of offices and shops.

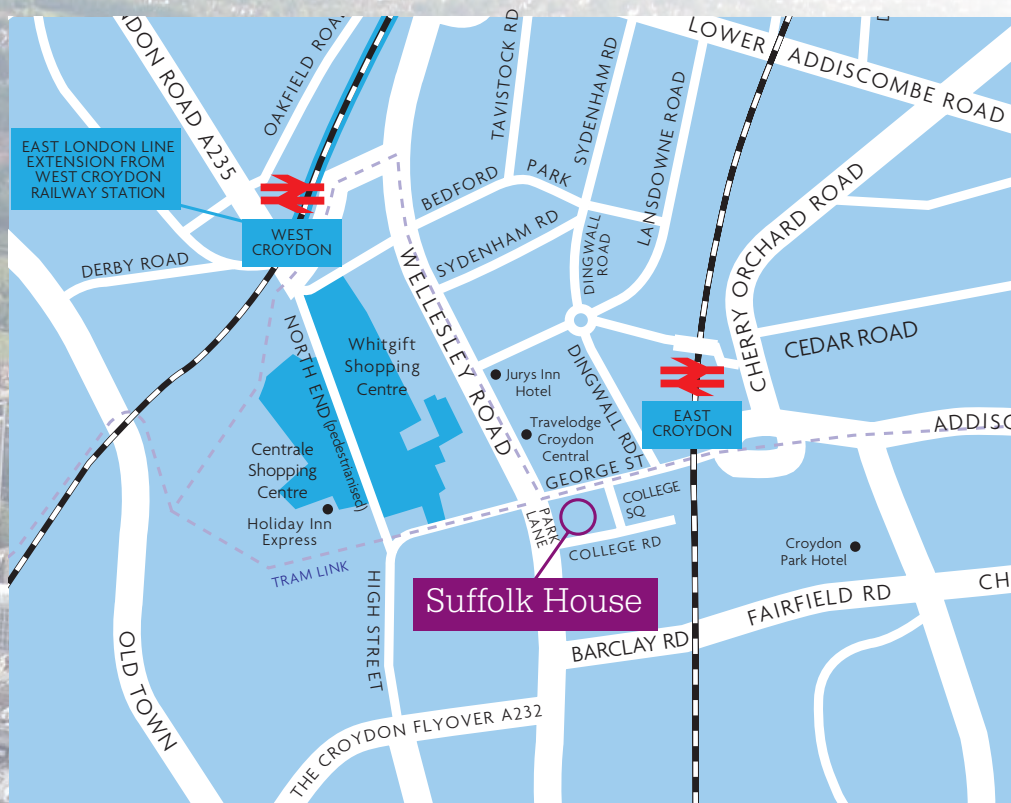
EPCs

The building has an energy efficiency rating of C.





Suffolk House



Viewing by appointment through joint sole agents.


Sinclair Clark
 020 7494 9399
 sinclairclark.co.uk

STUART EDWARDS FULLERMOON
 stuart-edwards.com
 020 8688 8313
 102-104 HIGH STREET CROYDON CR9 1TN

Vanessa Clark
vanessa@sinclairclark.co.uk

Jerry Taylor
jerryt@stuart-edwards.com

Managing agents


Matthews & Goodman
 Nigel Watson
 nwatson@matthews-goodman.co.uk

Misrepresentation Act 1967: Whilst all the information in these particulars is believed to be correct, neither the agents nor their clients guarantee its accuracy, nor is it intended to form part of any contract. All areas quoted are approximate. Finance Act 1989: Unless otherwise stated, all prices and rents are quoted exclusive of Value Added Tax (VAT). Any intending purchasers or lessees must satisfy themselves independently as to the incidence of VAT in respect of any transaction. Services: none of the services have been tested and all interested parties should make their own enquiries. July 2017