



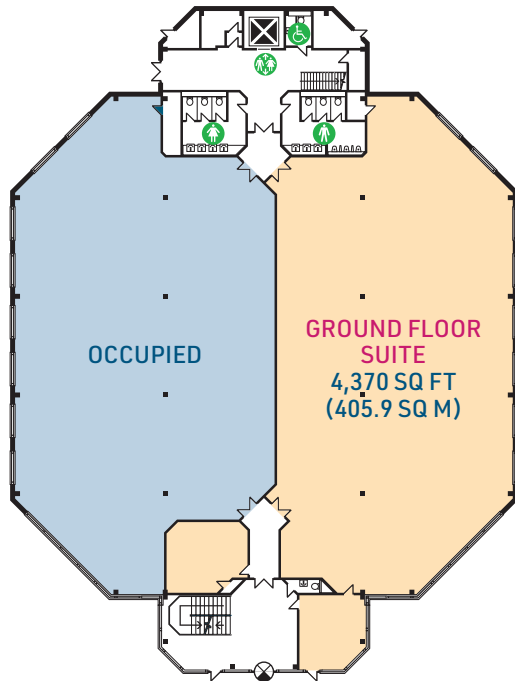
# HEATHROW BOULEVARD 2 CURRENT AVAILABILITY FLOOR PLANS



**TOTAL OFFICE SPACE AVAILABLE 4,370 - 13,270 SQ FT (405.9 - 1,232.7 SQ M)**

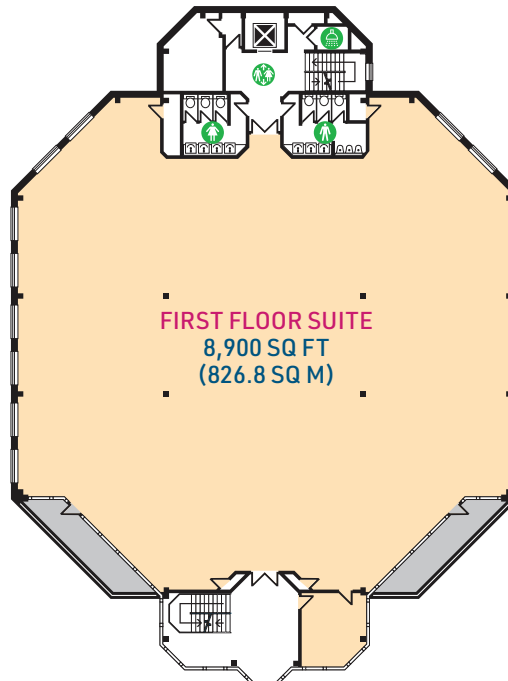
### GROUND FLOOR SUITE (OPTION 1)

**SUITE:** 4,370 SQ FT (405.9 SQ M)  
16 PARKING SPACES



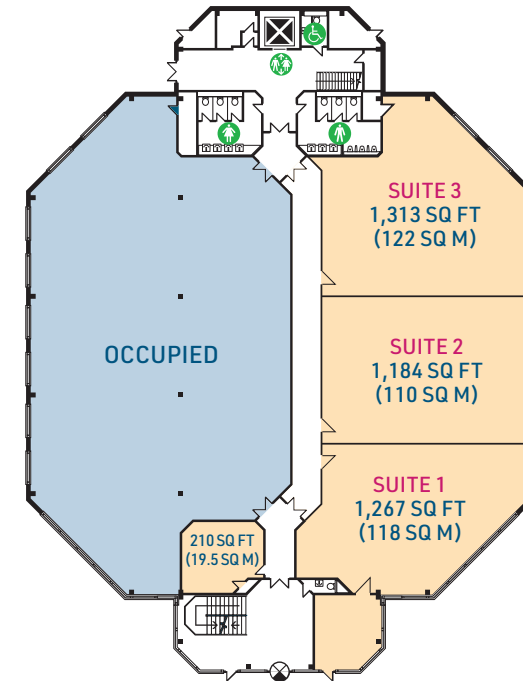
### FIRST FLOOR SUITE

**SUITE:** 8,900 SQ FT (826.8 SQ M)  
32 PARKING SPACES



### GROUND FLOOR SUITES (OPTION 2)

**SUITE 1:** 1,267 SQ FT (118 SQ M) - 4 PARKING SPACES  
**SUITE 2:** 1,184 SQ FT (110 SQ M) - 4 PARKING SPACES  
**SUITE 3:** 1,313 SQ FT (122 SQ M) - 4 PARKING SPACES



**ALL AREAS ARE MEASURED IN ACCORDANCE WITH IPMS3**    ■ AVAILABLE    ■ OCCUPIED



## HEATHROW BOULEVARD 2 CURRENT AVAILABILITY FLOOR PLANS



Indicative finish



Regular pop-up food stalls



Indicative finish

*"Evdental began to look at potential sites for a second clinic to be situated in the London area in early 2015 and we had a range of options. Great transport links at Heathrow were undoubtedly attractive but we were also extremely grateful to Orbit Southern for working with us to make the move as smooth as possible. Since that time they have maintained the site to a very high standard and stayed in touch to ensure we are happy. We have a great relationship and I would not hesitate to work with them again to grow our business."*

**Steve O'Brien, Group Practice Director, Evdental Centre Limited**