

023 8082 0900 / 023 9220 3200

vailwilliams.com



INDUSTRIAL/WAREHOUSE UNIT WITH SECURE YARD - TO LET

Unit 3 Logistics City

Solent Way, Whiteley, Fareham, PO15 7FT

Industrial / Warehouse

TO LET

8,665 sq ft

(805.00 sq m)

- Level loading doors (4m x 4.5m)
- Secure rear yard
- 7m minimum eaves height
- First floor fitted offices
- Electric Loading: 90 KVA
- 4 x electric vehicle charging points
- Allocated parking

Expert property advice delivering competitive advantage

Unit 3 Logistics City, Solent Way, Whiteley, Fareham, PO15 7FT

Summary

Available Size	8,665 sq ft
Rent	£10.50 per sq ft
Business Rates	Upon Enquiry
EPC Rating	Upon Enquiry

Specification

Level loading doors (4m x 4.5m)
7m minimum eaves height
First floor fitted offices
37.5 KN/m2 floor loading
Electric loading: 90 KVA
4 x electric vehicle charging points
Allocated parking

Location

The scheme is situated within the newest business district of Solent Business Park and set within the mature wooded environment of Fulcrum, providing a pleasant environment with excellent access to the M27 at Junction 9.

Description

New build self-contained 8,665 sqft industrial/warehouse unit with first floor fitted office space and secure rear yard with allocated parking.

Accommodation

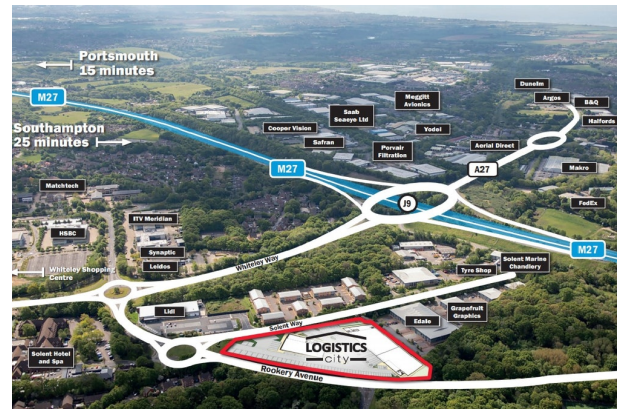
Name	Sq ft	Sq m
Ground - Ground Floor	6,684	620.96
1st	1,981	184.04
Total	8,665	805

Terms

The units are available on a leasehold basis. Further details, including quoting terms are available on request. An estate service charge will be applicable.

Viewings

For viewings or further information, please contact the joint sole agents:



Viewing & Further Information

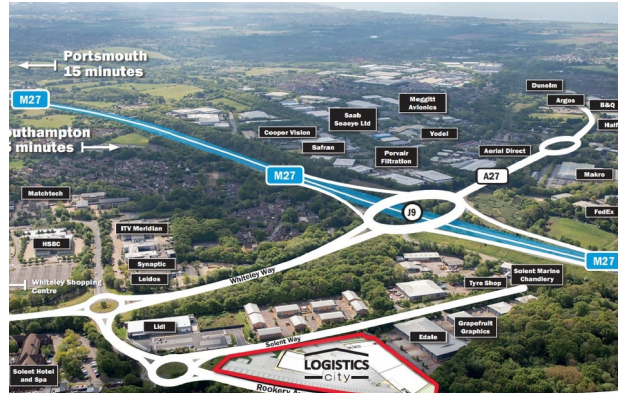
Alex Gauntlett

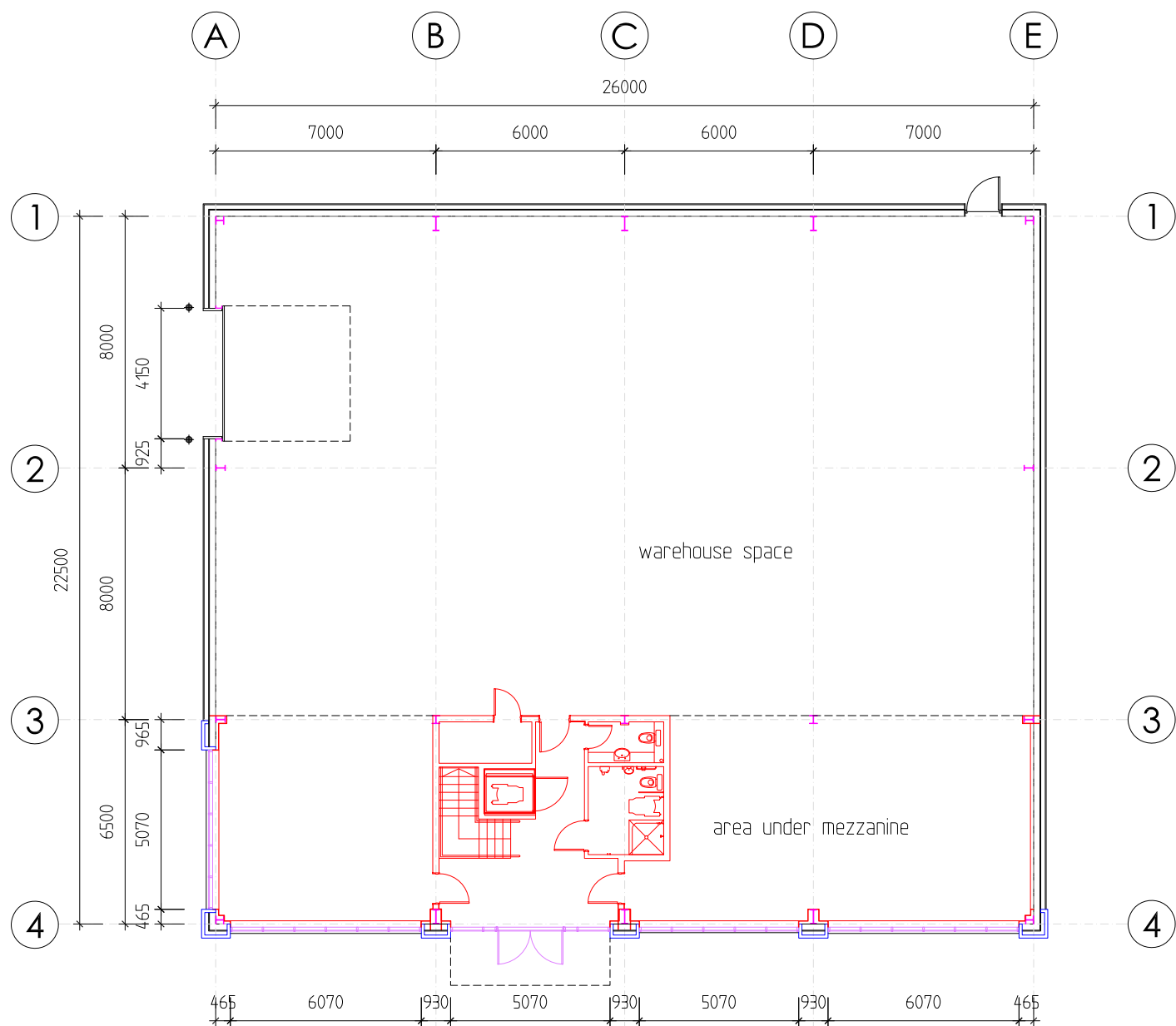
07584 657826

agauntlett@vailwilliams.com

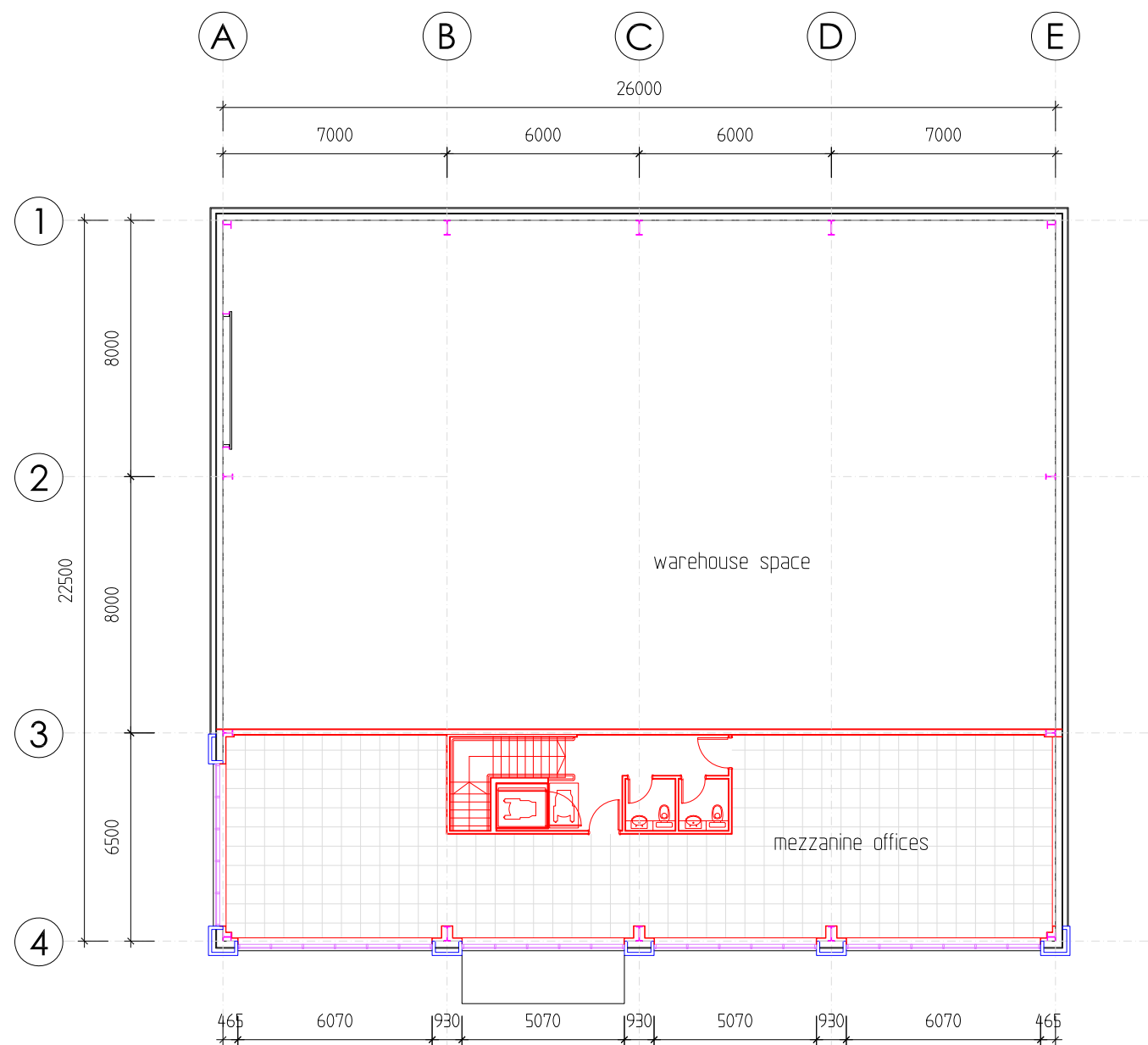


[More properties at vailwilliams.com](https://www.vailwilliams.com)

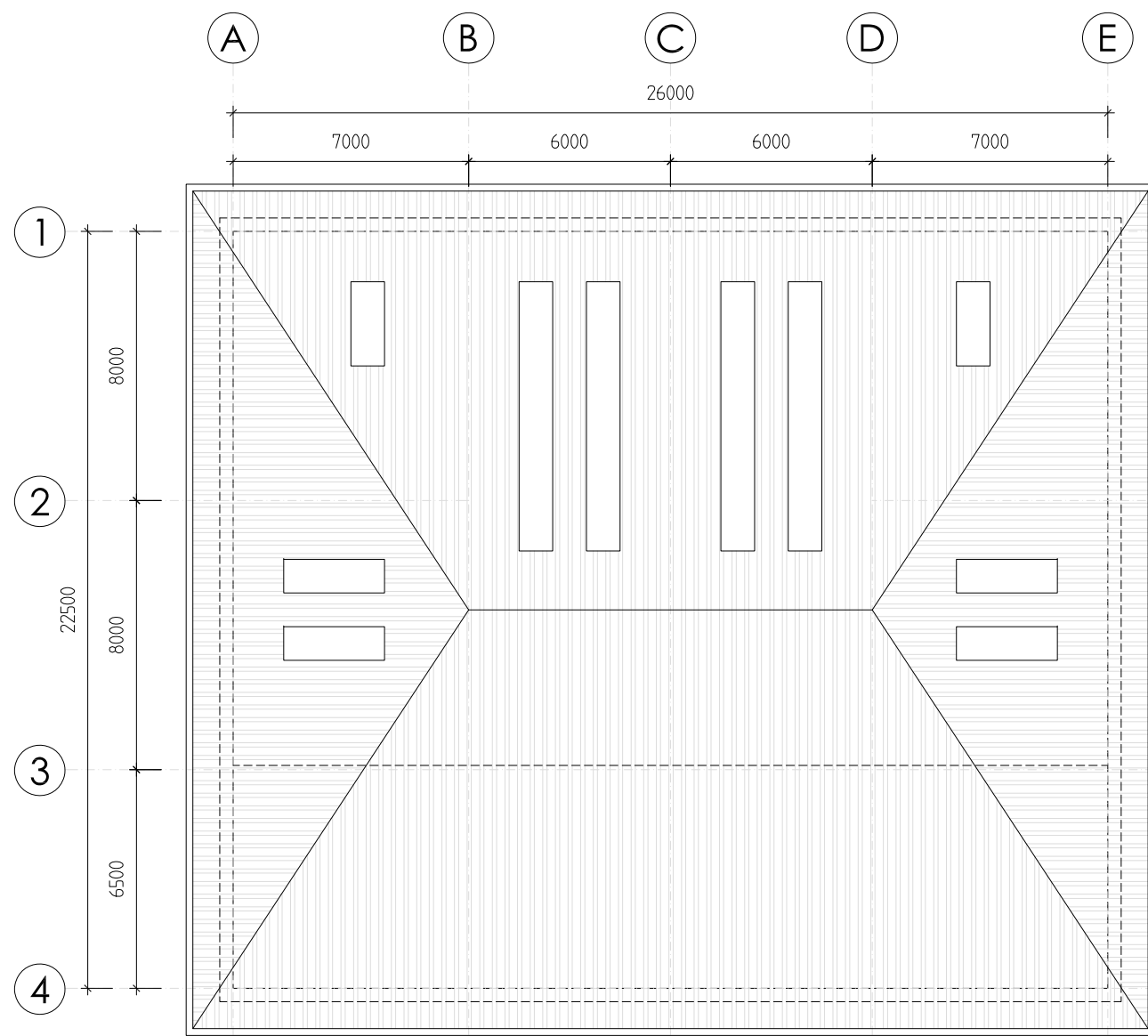




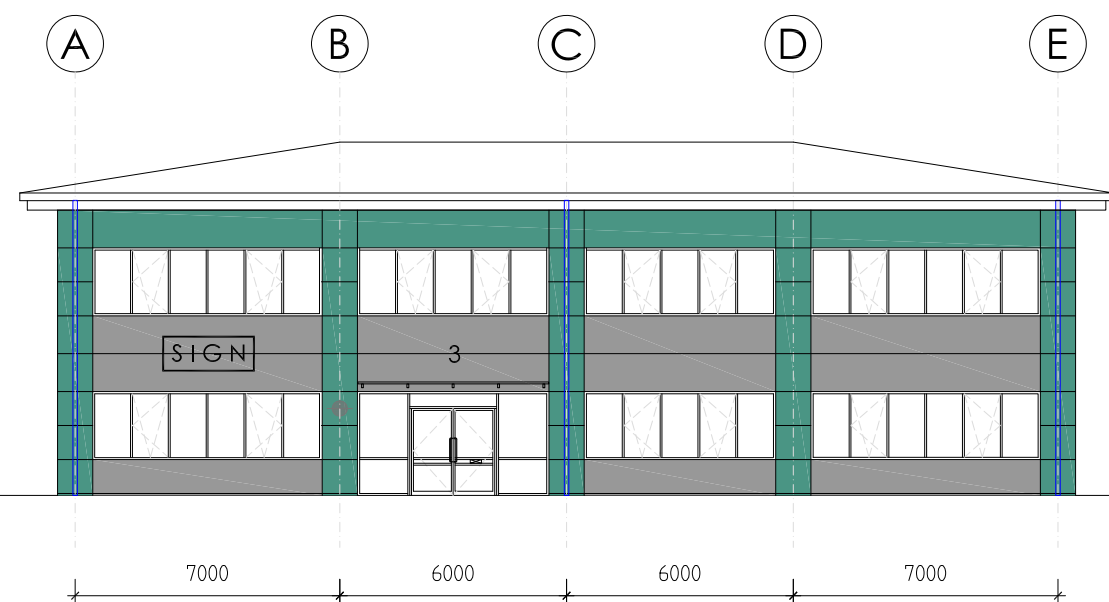
GROUND FLOOR PLAN



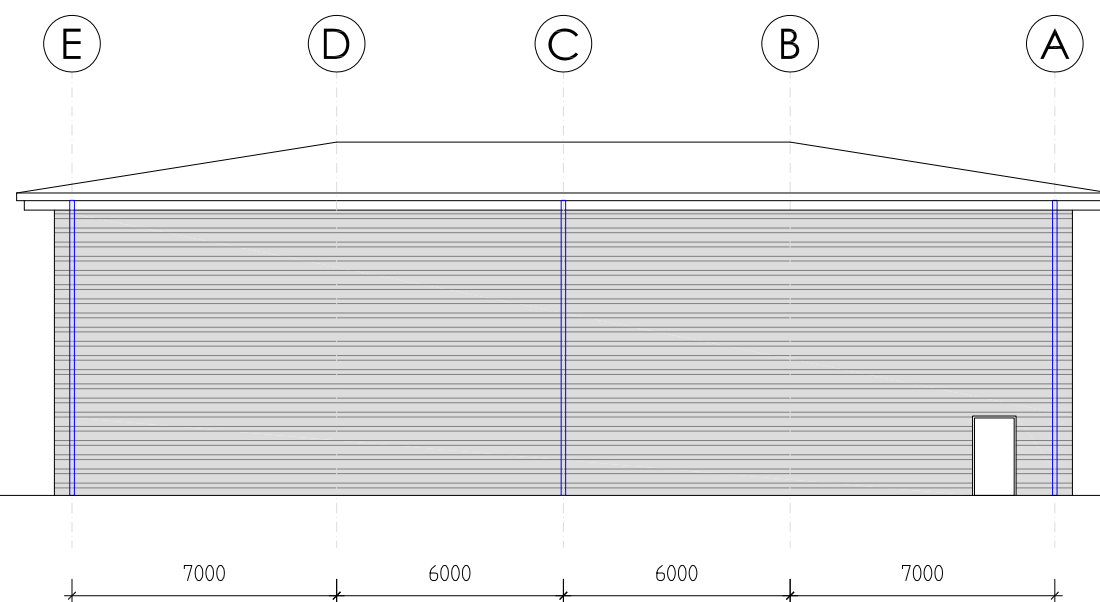
FIRST FLOOR PLAN



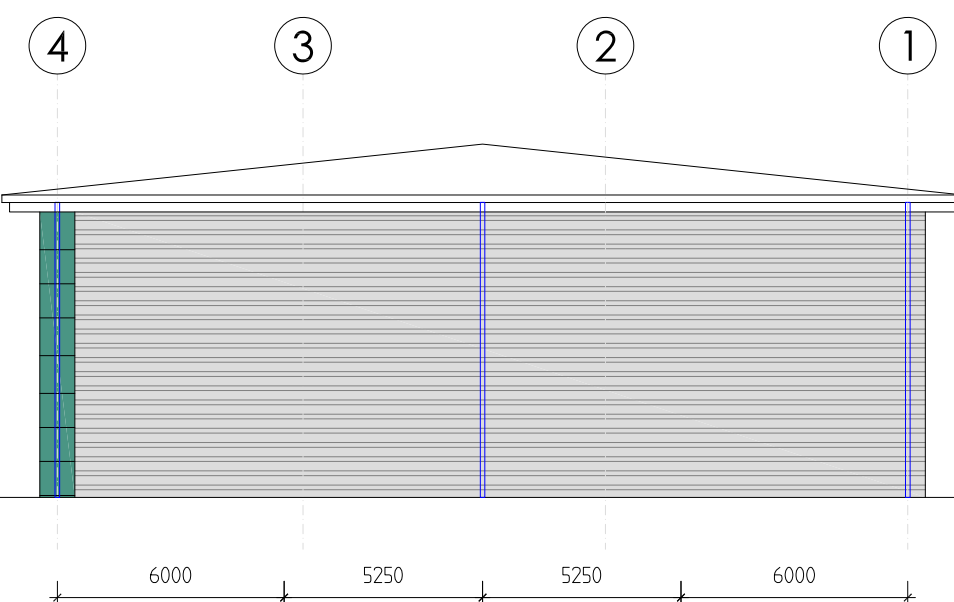
ROOF PLAN



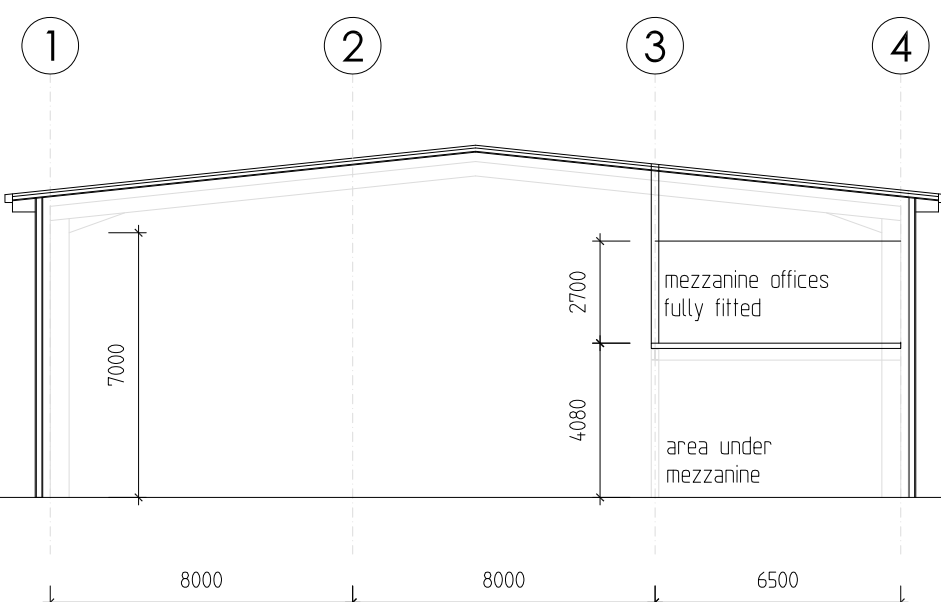
SOUTH ELEVATION



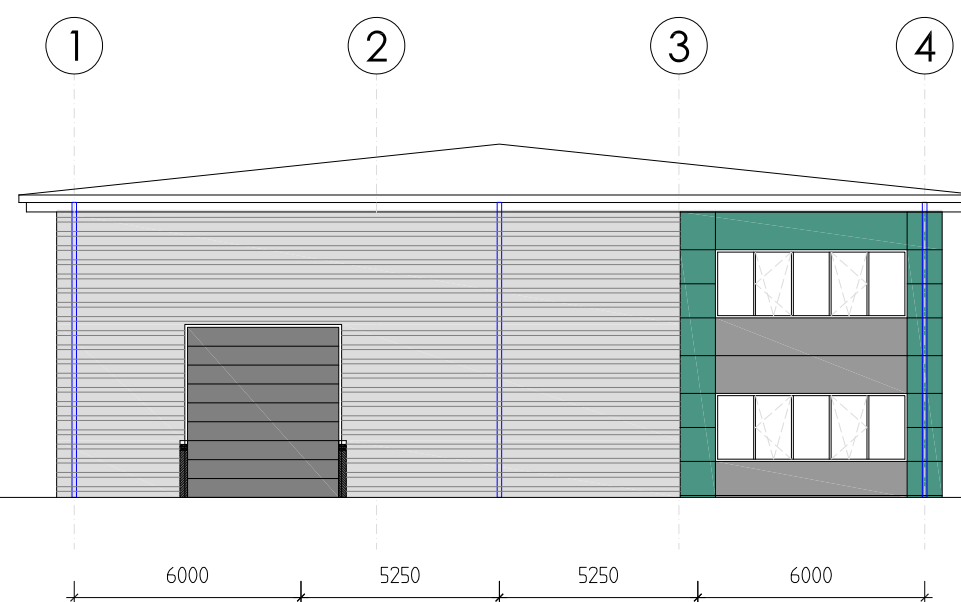
NORTH ELEVATION



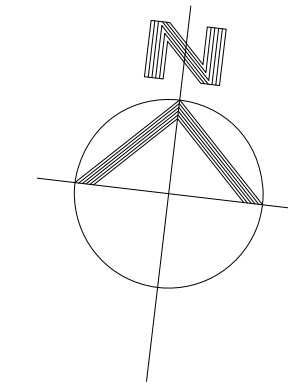
EAST ELEVATION



SECTION



WEST ELEVATION

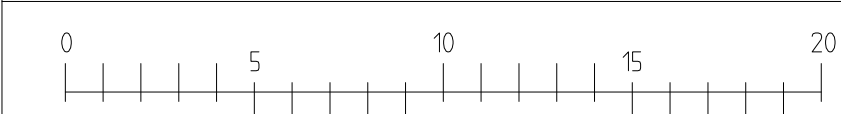


Unit	Gf. area	Mezz area	Total (GEA)
3	621m2	184m2	805m2

Unit	Gf. area	Mezz area	Total (GIA)
3	581m2	162m2	743m2

- Materials:
- Profiled built-up roof cladding in HP5200 Goosewing Grey BS 10A05
- Circular RWPs in RAL 9007, RAL 9006 or Prisma Pegasus Green to match adjoining cladding
- Gutter fascia in Grey Aluminium colour RAL 9007
- Horizontally laid profiled built-up wall cladding and related flashings in Metallic Silver colour RAL 9006
- Horizontally laid Microrib composite wall cladding in Pegasus Green
- Horizontally laid Microrib composite wall cladding in Metallic Silver colour RAL 9006
- Coloured insulated loading doors in Grey Aluminium RAL 9007
- Powder coated windows and curtain walling in RAL 9006
- Fire escape doors in RAL 9006 to match cladding

- Glazed spandrel panels
- Tilt and turn opening windows
- Building mounted floodlights
- Main entrance i.e. lights (circular high quality fitting)
- Signage panels with insert plate - 900 x 2440mm
- Unit numbers - 450mm high



- Rev D:
- Rev C:
- Rev B:
- Rev A: 23-11-2018. Cladding colours corrected, GIA added

Notes

This drawing is the sole copyright of IAN C. KING Associates and no part may be reproduced without the written consent of the above

Job

LOGISTICS CITY
FULCRUM 6
SOLENT WAY, FAREHAM

Title
UNIT 3, FLOOR PLANS,
ELEVATIONS & SECTION

Drg No
KP-217-TP-04

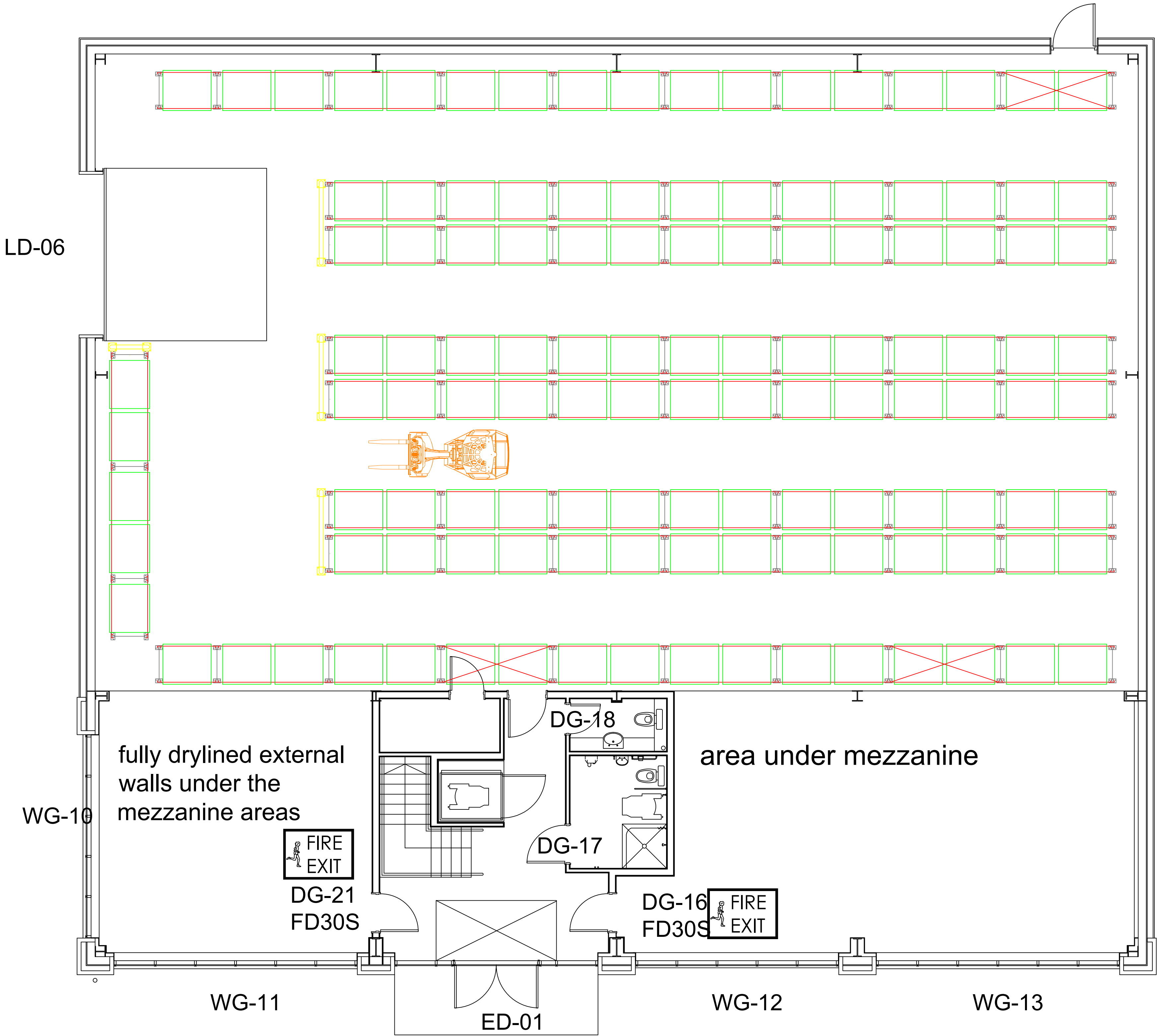
Date	Scale	Rev
10-2018	1:200 (A1)	A
Drawn	Checked	Planning Drawing

IAN C KING
ASSOCIATES - ARCHITECTS

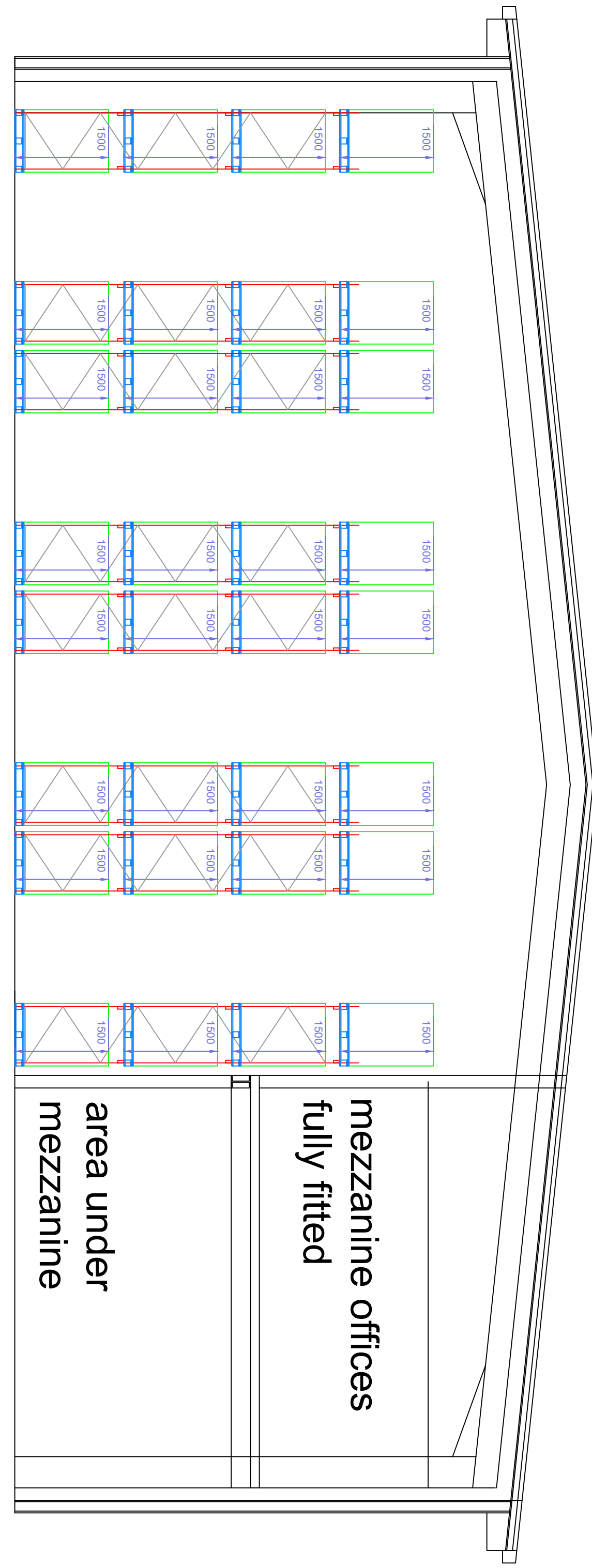
5 St George's Court
131 Putney Bridge Road
London SW15 2PA
Tel: 020 8871 2022 / Fax: 020 8871 2989
E-mail: icka@iancking.co.uk

REGISTERED FIRM
BS EN ISO 9001

IAN C KING Associates - Architects is the trading name of Gammony Ltd

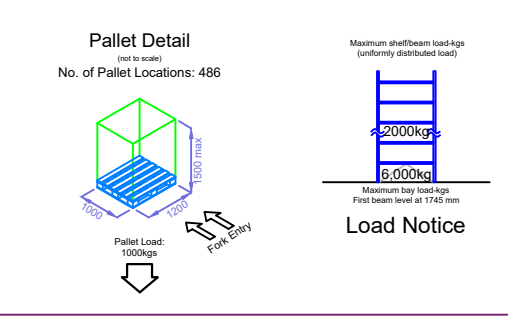
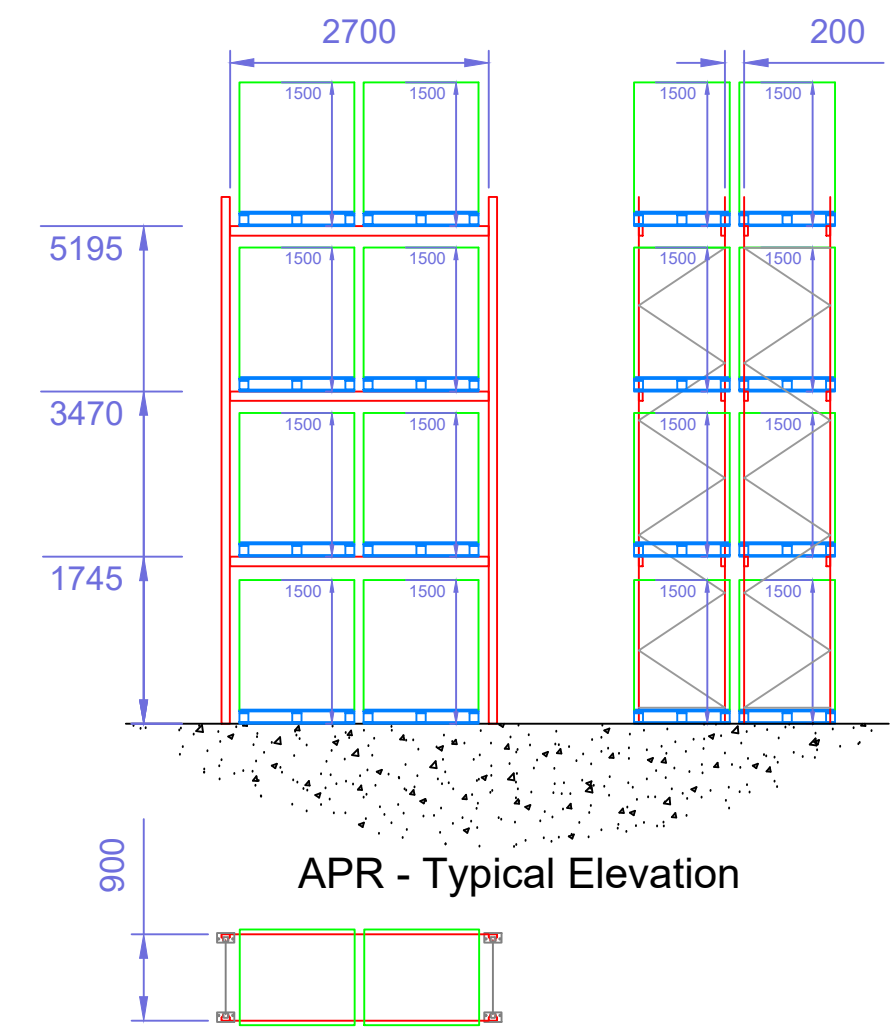


UNIT 3



Forklift Truck Details

Type	Articulating
Manufacturer:	Aisle Master
Model:	15NE
Capacity:	1000kg @ 6,995mm
Mast Type:	Triple
Lift Height:	5,500mm
Closed Mast:	2485mm
Fork Length:	1000mm
Pallet Type:	UK
Working Aisle:	1700mm p-p



Rev: Date: Details:

Client:
Logistics City
Whiteley (Unit 3)

Date: 24th Feb 20
Project: Warehouse Layout
Drawing No.: 21080-01
Scale: NTS
Sales Contact: Ben Buckler
Tel No.: 07970 088846
Status: Design
Drawn By: BB



Did you know? We also supply warehouse cleaning equipment, counterbalance trucks, reach trucks, articulating trucks, powered pallet trucks and much more.....www.locators.co.uk