

**22 BRUTON STREET,
MAYFAIR,
LONDON W1J 6QE**

Office to Let – 1,140 sq ft.

**LOCATION**

The property is located in the heart of Mayfair on the north side of Bruton Street, a short walk from Berkeley Square. The area has an abundance of shopping, restaurants and hotel facilities.

DESCRIPTION

The available accommodation comprises a period style office, set within an attractive Georgian townhouse.

AMENITIES

- Accommodation comprises a period style office
- Lift access
- Excellent natural Light
- 24 hour access

TRANSPORT LINKS

Green Park		4 minutes
Oxford Circus		7 minutes
Bond Street		7 minutes

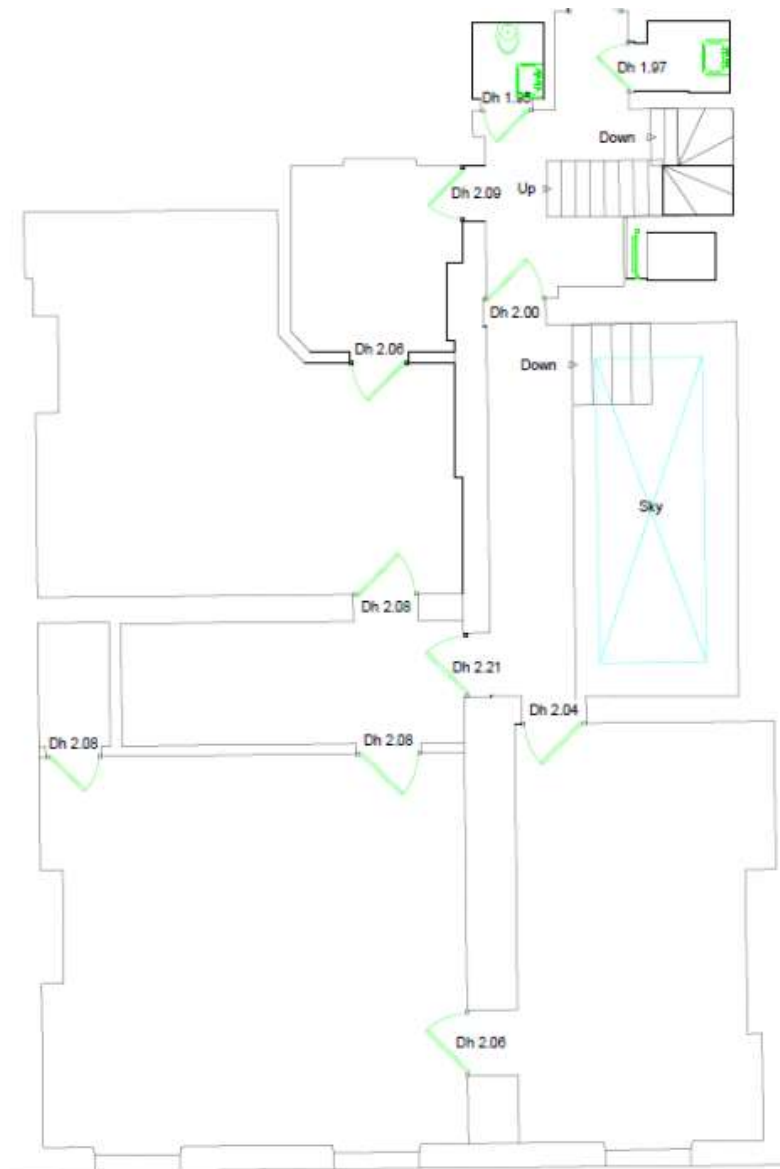
AVAILABILITY3rd Floor – 1,140 sq ft.**TERMS**

The space is available on a new lease for a term by arrangement direct from the freeholder.

Rent: £77.50 per sq.ft**Rates:** £37.00 per sq.ft**Service charge:** £18.34 per sq.ft**CONTACT****Maxim Vane Percy: 020 7866 7628**maxim.vanepercy@montagu-evans.co.uk**Alex Kirk: 020 3962 6453**alex.kirk@montagu-evans.co.uk**Henry Clark: 020 7312 7481**henry.clark@montagu-evans.co.uk

For further information or to arrange a viewing.

3rd FLOOR PLAN



BRUTON STREET