

16A Baker St, Marylebone, London W1U 3BL

A self-contained, fully fitted and furnished office, 3,581 sq. ft.



LOCATION

The property is located in Marylebone at the southern end of Baker Street and adjacent to Portman Square. The space is equidistant from Baker Street Station (Jubilee, Bakerloo, Hammersmith & City, Metropolitan and Circle Lines), Bond Street (Jubilee and Central) and Marble Arch (Central).

DESCRIPTION

16 Baker Street is a 1st floor self-contained office unit. The office space has been fully fitted and furnished to a high standard to include a plasterboard ceiling, LED lights and wooden floor finish. The property benefits from great natural light, a dedicated reception and has a private entrance.

020 7493 4002

5 Bolton Street London W1J 8BA
www.montagu-evans.co.uk

AMENITIES

- Self-contained entrance
- Dedicated reception
- Fully fitted and furnished to a high standard
- Plasterboard ceiling
- Raised floor
- Refurbished lift
- Air conditioning
- LED lights

TRANSPORT LINKS

Baker Street		9 minutes
Bond Street		9 minutes
Marble Arch		9 minutes

ACCOMMODATION

3,581 sq. ft.

TERMS

The space is available on flexible terms until 2027, with a tenant only option to break in 2022.

Rent: £84.50 per sq.ft

Rates: £22.90 per sq.ft

Service charge: £2.50 per sq.ft

CONTACT

Angus Marlow-Thomas: 020 7866 8612

Angus.Marlow-Thomas@montagu-evans.co.uk

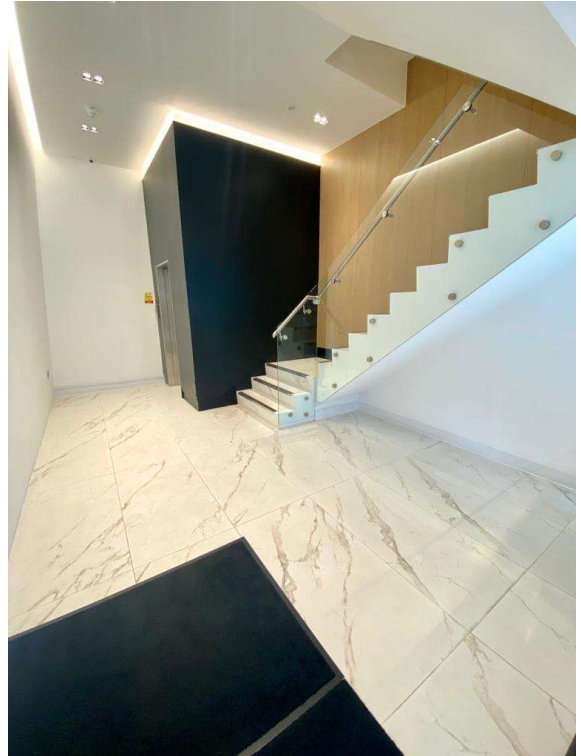
Katie Stewart: 020 7866 8692

Katie.stewart@montagu-evans.co.uk

Will Fennell: 020 7074 2605

Will.Fennell@montagu-evans.co.uk

For further information or to arrange a viewing.



FLOORPLAN

