



**SIX AGAR**  
COVENT GARDEN

# SIX AGAR EXECUTIVE SUMMARY



TWO REFURBISHED OFFICE FLOORS AVAILABLE IN THE SUMMER 2020, FINISHED WITH STYLISH NEW EXPOSED CEILING DETAILS AND FEATURE LED LIGHTING. THESE FLOORS WILL PROVIDE BRIGHT OPEN PLAN OFFICE ACCOMMODATION DELIVERED WITH THE MODERN OCCUPIER IN MIND. THE BUILDING WILL ALSO FEATURE A COMPLETELY REMODELLED RECEPTION AREA, DESIGNED WITH AN EXCEPTIONAL ATTENTION TO DETAIL, CREATING A STAND OUT ARRIVAL EXPERIENCE IN THE HEART OF COVENT GARDEN.

**FLOOR FOUR - 11,338 SQ FT / 1,053 SQ M**

**FLOOR THREE - 12,826 SQ FT / 1,192 SQ M**



# A STRIKING NEW ARRIVAL



6 AGAR RECEPTION

CGI IMAGES FOR INDICATIVE PURPOSES

## 2 EXCELLENT NEW FLOORS



FOURTH FLOOR

CGI IMAGES FOR INDICATIVE PURPOSES

# THE POTENTIAL TO CONNECT



THIRD FLOOR CONNECTING STAIRWELL

CGI IMAGES FOR INDICATIVE PURPOSES

# AT THE HEART OF COVENT GARDEN



## SIX AGAR WALK TIMES TO TUBE & MAINLINE STATIONS:

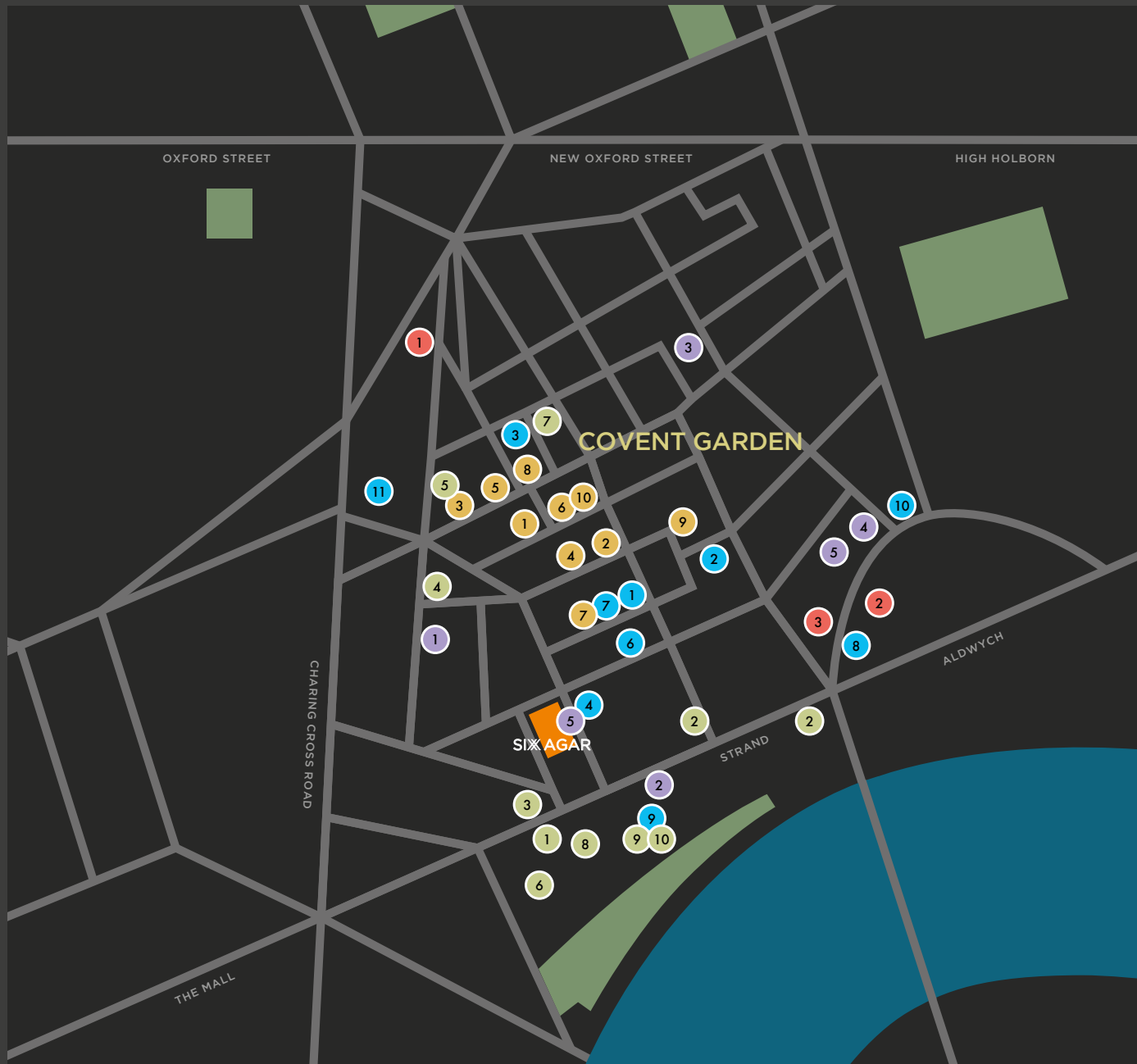
Charing Cross	3 mins
Embankment	5 mins
Leicester Square	5 mins
Covent Garden	6 mins
Tottenham Court Road	13 mins
Holborn	16 mins
Waterloo	16 mins

## CHARING CROSS STATION TO:

London Bridge	7 mins
- Southeastern Trains	
Kings Cross Station	10 mins
- Northern & Piccadilly Lines	
Paddington Station	12 mins
- Bakerloo Line	
Canary Wharf	23 mins
- Northern & Jubilee Lines	
Gatwick Airport	41 mins
- Northern, District or Circle & Gatwick Express	
London City Airport	43 mins
- Northern & Jubilee Lines & DLR	
Stansted Airport	50 mins
- Bakerloo & Victoria Lines & Stansted Express	
Heathrow Airport	55 mins
- Bakerloo Line & Heathrow Express	

\*All journey times as stated on Google Maps

# COVENT GARDEN OCCUPIERS



## RESTAURANTS & BARS

- 1 Aubaine
- 2 Balthazar
- 3 Hawksmoor
- 4 Milk Train
- 5 Cafe Murano
- 6 Franco Manca
- 7 Oysterman
- 8 Radio Rooftop Bar
- 9 Smith & Wollensky
- 10 The Delaunay
- 11 The Ivy

## SHOPPING

- 1 Agnes B
- 2 Apple
- 3 Barbour
- 4 Burberry
- 5 Cos
- 6 Dyptique
- 7 Joseph Cheaney
- 8 Lululemon
- 9 Mulberry
- 10 Paul Smith

## HOTELS

- 1 Covent Garden Hotel
- 2 ME Hotel
- 3 One Aldwych

## WELLBEING

- 1 Gymbox
- 2 Virgin Active
- 3 Triyoga
- 4 Sweat it
- 5 DW Fitness

## BUSINESS

- 1 Bain & Company
- 2 CVC Capital Partners
- 3 Coutts
- 4 Media Planning Group
- 5 Robert Walters
- 6 PWC
- 7 Red Bull
- 8 Spotify
- 9 The Economist
- 10 Conde Naste

# COVENT GARDEN - WORLD CLASS





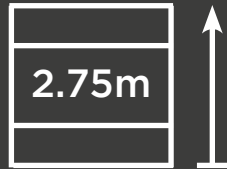
# COVENT GARDEN - WORLD CLASS



# COVENT GARDEN - WORLD CLASS



# EXCEPTIONAL FEATURES



CEILING HEIGHTS



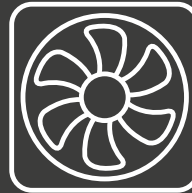
100-135MM RAISED FLOORS



3 PASSENGER LIFTS & 1 GOODS LIFT



CHANGING ROOMS WITH 6 SHOWERS



VRF AIR CONDITIONING



REFURBISHED CAT A OFFICE



SECURE PARKING FOR 60 BIKES



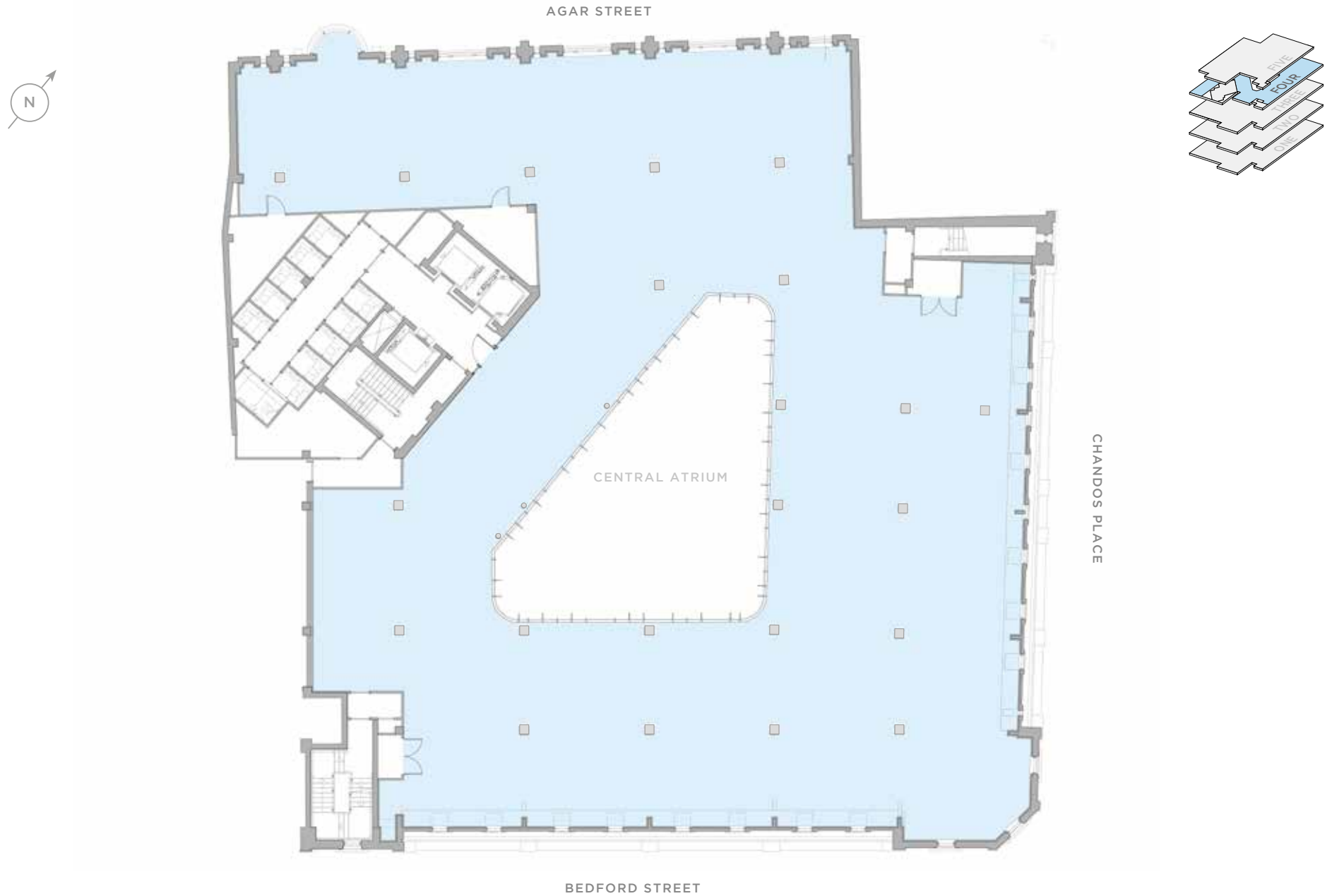
NEW BLACK MESH CEILING GRID



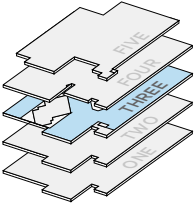
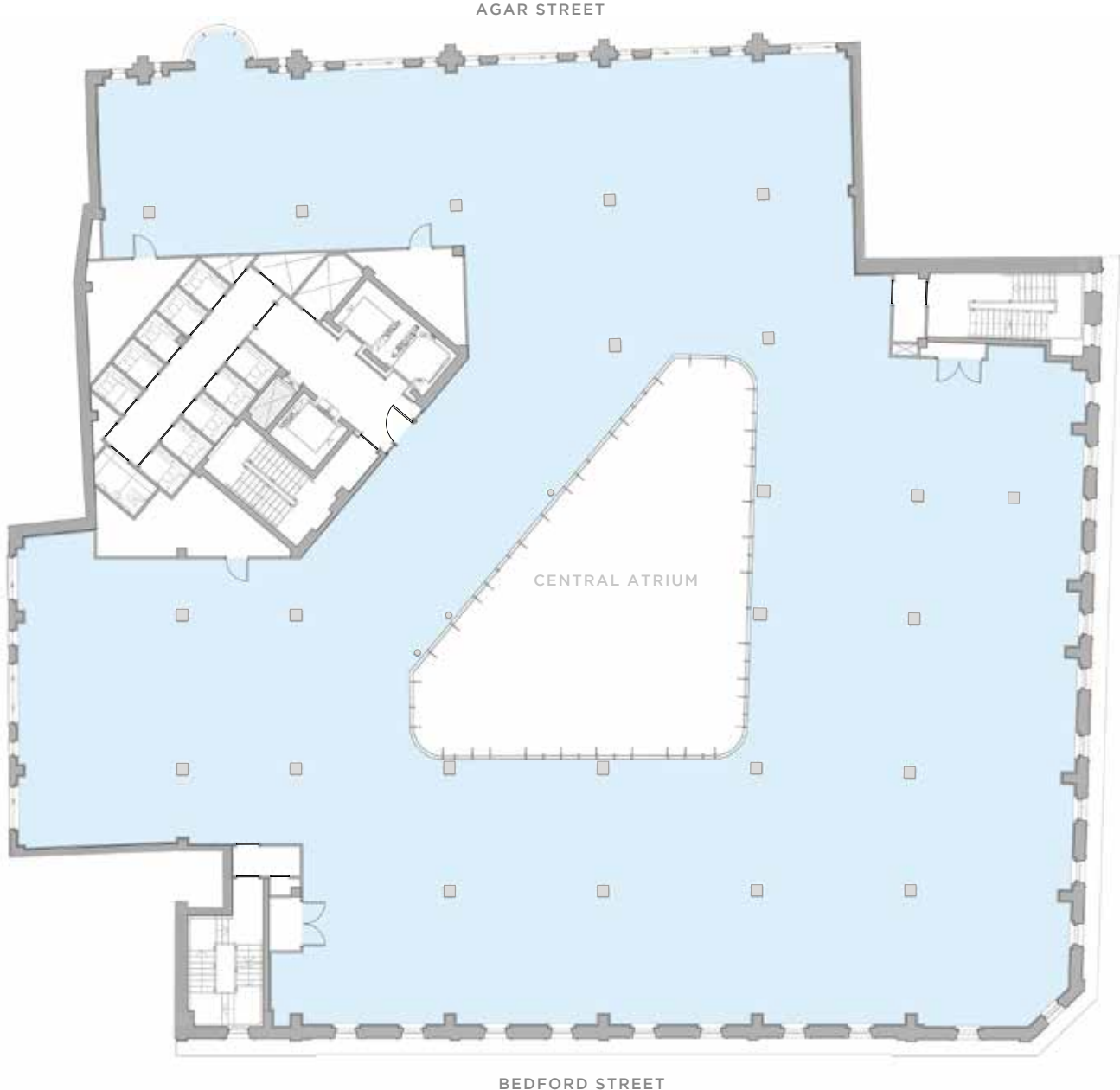
BUILDING COMMISSIONAIRE



# FLOOR FOUR - 11,338 SQ FT / 1,053 SQ M



# FLOOR THREE - 12,826 SQ FT / 1,192 SQ M



FOR MORE - GET IN TOUCH



WILLIAM FOSTER  
william.foster@knightfrank.com  
+44 7748 985 951

NICK GARCEV  
nick.garcev@knightfrank.com  
+44 7770 017360

FRANCESCA SKINNER  
francesca.skinner@knightfrank.com  
+44 7786 191 140

EDWARD CHARLES  
& PARTNERS W 1  
CHARTERED SURVEYORS

ANDREW OKIN  
aokin@edwardcharles.co.uk  
+44 7887 714 491

CRAIG NORTON  
cnorton@edwardcharles.co.uk  
+44 7818 424 764

SEAN CUNNINGHAM  
scunningham@edwardcharles.co.uk  
+44 7827 985 858

SIXAGAR.COM



# IMPORTANT NOTICE

## **1. Particulars:**

These particulars are not an offer or contract, nor part of one. You should not rely on statements by Knight Frank LLP or Edward Charles & Partners in the particulars or by word of mouth or in writing (“information”) as being factually accurate about the property, its condition or its value. Neither Knight Frank LLP or Edward Charles & Partners nor any joint agent has any authority to make any representations about the property, and accordingly any information given is entirely without responsibility on the part of the agents, seller(s) or lessors(s).

## **2. Photos and CGI's etc:**

The photographs and CGI's show only certain parts of the property as they appeared at the time they were taken. Areas, measurements and distances given are approximate only.

## **3. Regulations etc:**

Any reference to alterations to, or use of, any part of the property does not mean that any necessary planning, building regulations or other consent has been obtained. None of the services or appliances have been tested and no warranty is given or is to be implied that they are in working order. A buyer or lessee must find out by inspection or in other ways that these matters have been properly dealt with and that all information is correct.

## **4. VAT:**

The VAT position relating to the property may change without notice.

**Knight Frank LLP**  
**55 Baker Street**  
**London**  
**W1U 8AN**

**Edward Charles & Partners**  
**1 Marylebone High Street**  
**London**  
**W1U 4LZ**

