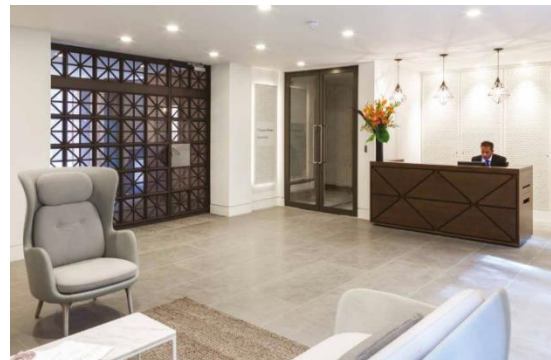


Office suites situated in a unique Mayfair setting with a landscaped courtyard
7 Curzon Street, Mayfair, London, W1J 5HG

CLUTTONS

Lower Ground and Ground Floor Units – 2,830 or 2,043 SQ FT



West Wing	
Floor	NIA (SQ FT)
Ground	1,885
Lower Ground	945
TOTAL	2,830

East Wing	
Floor	NIA (SQ FT)
Ground	1,853
Lower Ground	190
TOTAL	2,043

Amenities

- VRF Air conditioning
- Full access raised floor
- LG7 lighting
- 2 x Passenger lifts
- Commissionaire
- Secure bike storage, showers and lockers

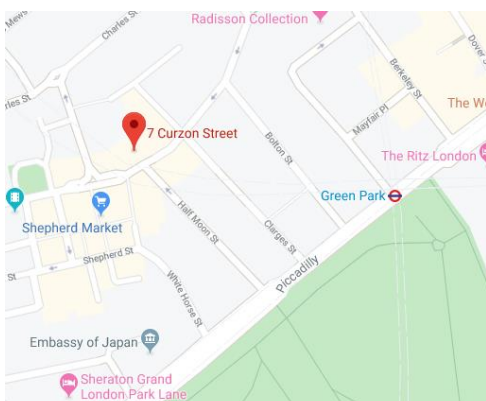
Outgoings

Quoting Rent: £72.50 psf (West Wing)
£80.50 psf (East Wing)

Business Rates: c.£27.00 psf (West Wing)
c.£30.00 psf (East Wing)

Service Charge: TBC

Location



Lease

New leases are available, direct from the Landlord.

Ground and lower ground must be taken together but wings can be taken separately.

Further details and viewings

Tom Roberts
DD: 020 7647 7020
E: tom.roberts@cluttons.com

Henry Brewster
DD: 020 3884 0369
E: henry.brewster@cluttons.com

IPMS: Available upon request.
EPC: Available upon request.

Ground Floor Plans

