

**11 BRUTON STREET,
MAYFAIR,
LONDON W1J 6PY**

Office to Let – 998 sq ft to 2,008 sq ft.

**LOCATION**

The property is located in the heart of Mayfair on the south side of Bruton Street. The area has an abundance of shopping, restaurants and hotel facilities.

DESCRIPTION

The available accommodation comprises flexible office spaces with lift access and 24 hour access.

TRANSPORT LINKS

Green Park		4 minutes
Oxford Circus		7 minutes
Bond Street		7 minutes

AVAILABILITY

2nd Floor – 998 sq ft.
1st Floor – 1,010 sq ft.

TERMS

The space is available for a term by arrangement direct from the freeholder.

Rent: £49.50 per sq ft.

Rates:

2nd Floor – £34.63 per sq ft.

1st Floor - £34.98 per sq ft.

Service charge: £12.47 per sq ft.

CONTACT

Maxim Vane Percy: 020 7866 7628

maxim.vanepercy@montagu-evans.co.uk

Alex Kirk: 020 3962 6453

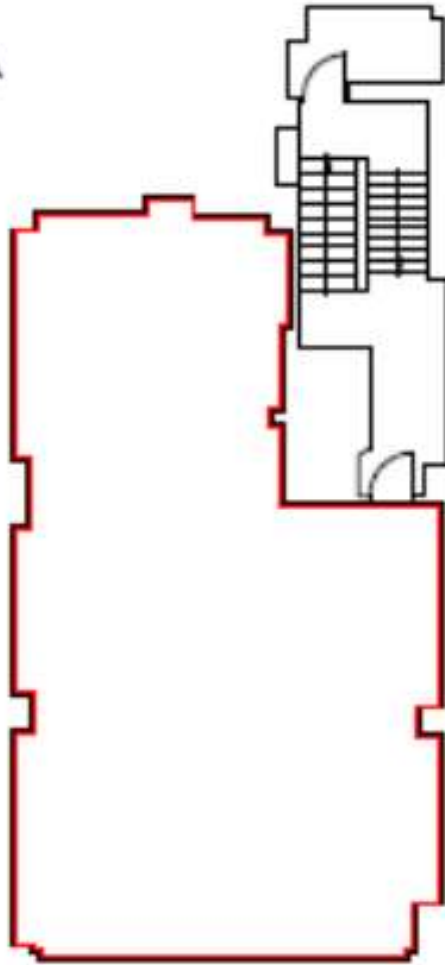
alex.kirk@montagu-evans.co.uk

Louis Bendien: 020 3004 2911

louis.bendien@montagu-evans.co.uk

For further information or to arrange a viewing.

FLOOR PLAN OF 2nd FLOOR



BRUTON STREET