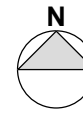


0 10 20 30 40 50m

Scale 1:1000 @ A3



NOTES

- All dimensions and levels are to be checked on site.
- Any discrepancies are to be reported to the architect before any work commences.
- This drawing shall not be scaled to ascertain any dimensions. Work to figured dims only.
- This drawing shall not be reproduced without express written permission from AEW.
- Title overlay drawings and ownership boundaries are produced using all reasonable endeavors. AEW cannot be responsible for the accuracy or scale discrepancy of base plans supplied to them.

DESIGN HAZARD IDENTIFICATION

- No significant Hazards have been identified in this drawing

Notes

- HGV circulation subject to tracking analysis
- * Denotes office/welfare block location for future fit out
- Internal building dimensions measured from face of sheeting rail to opposite sheeting rail

AREA SCHEDULE

| |
|---|
| Plot 1 Area: 3.26 acres / 1.31 ha |
| Unit 1 GIA |
| GF Warehouse 57,000ft ² / 5,295m ² |
| FF Office 4,000ft ² / 372m ² |
| TOTAL= 61,000ft² / 5,667m² |
| 10m to u/s haunch tbc |
| 79no. parking spaces inc. 4no. accessible |
| 173 no. parking per m ² |
| Plot 2 Area: 2.65 acres / 1.07 ha |
| Unit 2A GIA |
| GF Warehouse 20,000ft ² / 1,858m ² |
| FF = 1,500ft ² / 139m ² |
| TOTAL= 21,500ft² / 1,997m² |
| 33no. parking spaces inc. 2no. accessible |
| 160 no. parking per m ² |
| Unit 2B GIA |
| GF Warehouse 10,000ft ² / 929m ² |
| FF = 1,000ft ² / 93m ² |
| TOTAL= 11,000ft² / 1,022m² |
| 33no. parking spaces inc. 3no. accessible |
| 177 no. parking per m ² |
| Unit 2C GIA |
| GF Warehouse 10,000ft ² / 929m ² |
| FF = 1,000ft ² / 93m ² |
| TOTAL= 11,000ft² / 1,022m² |
| 33no. parking spaces inc. 3no. accessible |
| 177 no. parking per m ² |
| Plot 3 Area: 1.87 acres / 0.75 ha |
| Unit 3 GIA |
| GF Warehouse 28,000ft ² / 2,601m ² |
| FF Office 1,500ft ² / 139m ² |
| TOTAL= 29,500ft² / 2,740m² |
| 41no. parking spaces inc. 3no. accessible |
| 166 no. parking per m ² |
| Plot 4 Area: 2.18 acres / 0.88 ha |
| Unit 4 GIA |
| GF Warehouse 37,000ft ² / 3,437m ² |
| FF Office 2,000ft ² / 185m ² |
| TOTAL= 39,000ft² / 3,622m² |
| 60no. parking spaces inc. 3no. accessible |
| 158 no. parking per m ² |
| TOTAL GIA: 172,000ft² / 15,883m² |
| Estate road area: 1.04 acres / 0.42 ha |
| Extent of acoustic fence subject to confirmation |

Assumed overall development boundary subject to confirmation 11.01 acres / 4.45 hectares

Unit 2 GIA:

2A GF = 20,000ft² / 1,858m²

FF = 1,500ft² / 139m²

2B GF = 10,000ft² / 929m²

FF = 1,000ft² / 93m²

2C GF = 10,000ft² / 929m²

FF = 1,000ft² / 93m²

TOTAL: 42,500 ft² / 3,948 m²

8m to u/s haunch

Plot 2 (shown blue): 2.65 acres / 1.07 ha

Plot 3 (shown green): 1.87 acres / 0.75 ha

Plot 1 (shown pink): 3.26 acres / 1.31 ha

Plot 4 (shown yellow): 2.18 acres / 0.88 ha

Existing fence lines to be retained Plot 3 (shown green): 1.87 acres / 0.75 ha

Unit 1 GIA

GF Warehouse 57,000ft² / 5,295m²

FF Office 4,000ft² / 372m²

TOTAL= 61,000ft² / 5,667m²

10m to u/s haunch tbc

Unit 3 GIA

GF Warehouse 28,000ft² / 2,601m²

FF Office 1,500ft² / 139m²

TOTAL= 29,500ft² / 2,740m²

10m to u/s haunch

Unit 4 GIA

GF Warehouse 37,000ft² / 3,437m²

FF Office 2,000ft² / 185m²

TOTAL= 39,000ft² / 3,622m²

10m to u/s haunch

Extent of acoustic fence to be confirmed shown dashed blue

79no. parking spaces inc. 4no. accessible

10 no. trailer spaces

41no. parking spaces inc. 3no. accessible

60no. parking spaces inc. 3no. accessible

12no. parking spaces inc. 1no. accessible

17no. parking spaces inc. 1no. accessible

Proposed landscaping enhancement on approach

Extent of enabling works designed by WYG shown hatched

Existing sub-station location and potential location for second sub-station if required

33 no. inc. 2no. accessible

26m turning circle

26m turning circle

26m turning circle

26m turning circle

26m turning circle

P3 18/09/18 TF AL

First floor offices added to Units 2A & 2D. Scheme name changed.

P2 25/07/18 TF AL

Building internal and yard dimensions indicated

P1 09/07/18 TF AL

Initial Issue.

REV Date Drawn by: Checked by:

Status Purpose of Issue

S2 For Information

drawing stage Feasibility

client

Network Space Ltd

project

Raven Locks Little Hulton

drawing title

Proposed Masterplan

P6 05/02/19 ES AL

Unit 1 parking improved, unit 2A and B merged and all units renamed accordingly, unit 4 reduced to improve yard and parking amended.

P5 21/11/19 TF AL

Unit 1 and 4 yard areas improved.

P4 15/01/19 TF DRS

Notation amended and plot boundaries added.

date 09/07/18 drawn TF

scale@A3 1:1000 checked AL