



Ground Floor & Basement

142-144 Oxford Street, London, W1D 1LZ

Arranged over the Ground Floor and Basement (sales), with an ancillary office/storage (3,000 sq ft) on the 1st floor available separately.

3,680 sq ft
(341.88 sq m)

- Class E
- 1st Floor office also available
- New FRI Lease
- Ideal for Retail Use

Ground Floor & Basement, 142-144 Oxford Street, London, W1D 1LZ

Summary

Available Size	3,680 sq ft
Business Rates	Upon Enquiry
VAT	Applicable
Legal Fees	Each party to bear their own costs
EPC Rating	C

Description

The property is arranged over the Ground Floor and Basement (sales), with an ancillary office/storage (3,000 sq ft) on the 1st floor available separately.

Located on a prominent position on the north side of Oxford Street in the heart of this international retail thoroughfare, this building is a short walking distance from Oxford Circus, Tottenham Court Road Stations & the Elizabeth Line. Nearby the new Crossrail line and retailers including Dune, M&S and Sports Direct to name but a few.

EPC Rating: C

Other Suites Available:

146-148 Oxford Street, Ground/Basement/1st to 4th Floors - 6,355 sq ft

RENT

On application.

LEASE

A new Full Repairing & Insuring Lease is available for a term by arrangement. Outside of the Landlord & Tenant Act 1954.

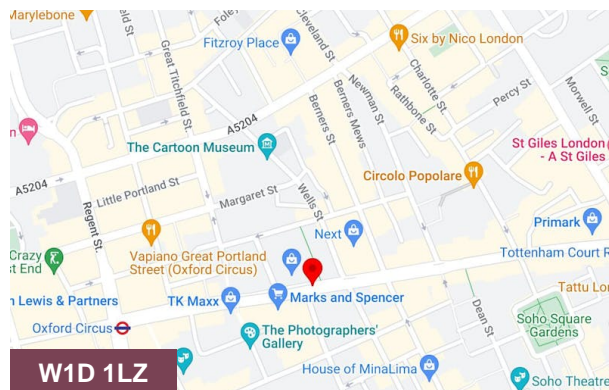
POSSESSION

Immediate upon completion of legal formalities.

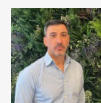
Accommodation

The accommodation comprises the following areas:

Name	sq ft	sq m	Availability
Ground - Sales	2,120	196.95	Available
Basement - Sales	1,560	144.93	Available
Total	3,680	341.88	



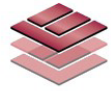
Viewing & Further Information



Malcolm Cohen

01234567890 | 07777777777

testing+7394@kato.app



THE LANGHAM ESTATE

PRIME RETAIL LOCATION TO LET

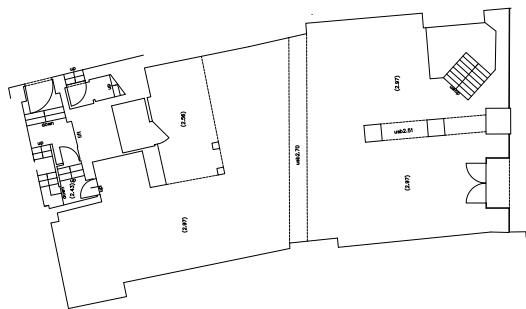
142-144 Oxford Street, London W1

GROUND & BASEMENT | 5,161 sq ft / 479.46 m²

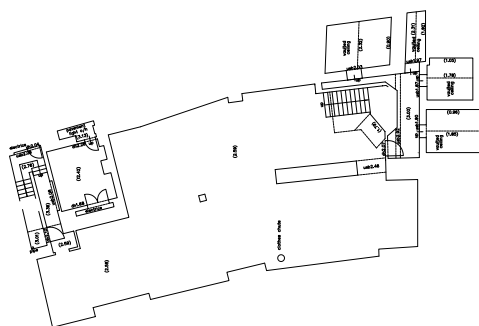
AVAILABLE
1st Floor
Office/Storage - 940 sq ft



GROUND FLOOR



BASEMENT FLOOR



Located on a prominent position on the north side of Oxford Street in the heart of this international retail thoroughfare, this building is a short walking distance from Oxford Circus, Tottenham Court Road Stations & the Elizabeth Line. Nearby the new Crossrail line and retailers including **Dune**, **M&S** and **Sports Direct** to name but a few.

1st Floor also available - 3,000 sq ft.

The property is arranged over the Ground Floor and Basement (sales). There is an ancillary office/storage on the 1st floor.

GROUND FLOOR (Sales): 2,120 sq ft | 196.95 m²

Gross Frontage 10.40 m | 34 ft 2"

Net Width 10.17 m | 33 ft 4"

Internal Depth 10.17 m | 33 ft 4"

BASEMENT (Sales): 1,560 sq ft | 144.92 m²

Basement Vaults 146 sq ft | 13.56 m²

Basement Storage 395 sq ft | 36.69 m²

TOTAL AREA: 5,161 sq ft | 479.46

Also Available: 146-148 Oxford Street, Ground / Basement / 1st - 4th Floors - 6,355 sq ft

EPC Rating: C



RENT

On application

LEASE

A new Full Repairing & Insuring Lease is available for a term by arrangement, outside the Landlord & Tenant Act 1954.

POSSESSION

Immediate upon completion of legal formalities

For further information call
020 7580 5656

LanghamEstate.com | MyNoho.co.uk

MALCOLM COHEN

malcolm.cohen@langhamestate.com

020 7907 4983

07768 156 577

DANIEL YERSON

daniel.yershon@langhamestate.com

020 7907 4986

07731 985 129

Offices | Retail | Restaurants | Showrooms | Residential | Storage



Langham Estate Management Ltd, London House, 9A Margaret Street, London W1W 8RJ

Any property is offered subject to contract, availability, and confirmation of details. These particulars do not form part of any contract and, whilst believed to be correct, parties are recommended to satisfy themselves as to the accuracy. The Lessors or Langham Estate Management Limited, or any person in their employment, cannot make or give any representation or warranty whatsoever in relation to this property. Unless otherwise stated, all prices and rentals quoted are exclusive of any Value Added Tax to which they may be subject. Floorplans are for illustrative purposes only and may not accurately reflect the property's current internal layout.