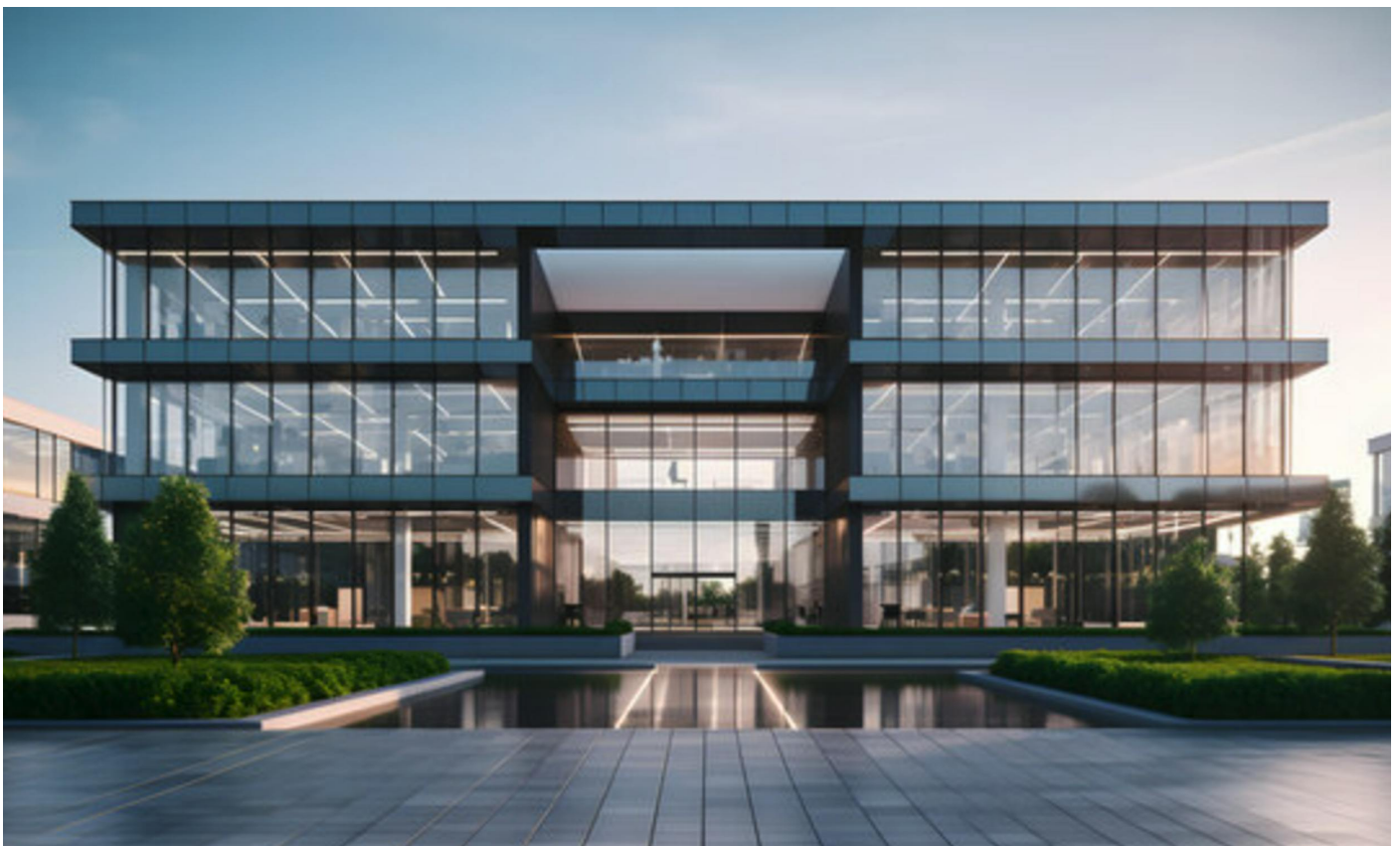


# Venture House.

2020 Marquis, Bracknell, RG12 1WA



## To Let

**1,690 to 5,500 sq ft**  
**(157.01 to 510.97 sq m)**

**£52 per sq ft**

Stunning office space with large windows and a great view.

- Spacious
- Easy access
- Close to station
- Great view
- Abundance of natural light

# Venture House.

2020 Marquis, Bracknell, RG12 1WA



## Summary

Available Size	1,690 to 5,500 sq ft / 157.01 to 510.97 sq m
Rent	£52 per sq ft
EPC	Upon enquiry

## Description

Discover a stunning, newly built office space in the heart of Bracknell, offering the perfect blend of style, functionality, and convenience. This large, contemporary workspace boasts expansive floor space, making it ideal for businesses looking to thrive in a professional environment.

Situated in a prime location, this office provides excellent transport links, local amenities, and easy access to major business hubs. The floor-to-ceiling windows flood the space with natural light, creating an inspiring and productive atmosphere while offering beautiful panoramic views of the surrounding area.

## Accommodation

The accommodation comprises the following areas:

Name	sq ft	sq m	Availability
Ground	1,690	157.01	Available
1st	1,690	157.01	Available
2nd	1,690	157.01	Available
<b>Total</b>	<b>5,070</b>	<b>471.03</b>	

