

**1-1A Old Bond Street**

London, W1X 3TD

## Testing

**200 to 500 sq ft**

(18.58 to 46.45 sq m)

- Car park
- A/c

# 1-1A Old Bond Street, London, W1X 3TD

## Summary

Available Size	200 to 500 sq ft
Rent	£10 - £25 per sq ft
Business Rates	Upon Enquiry
EPC Rating	Upon enquiry

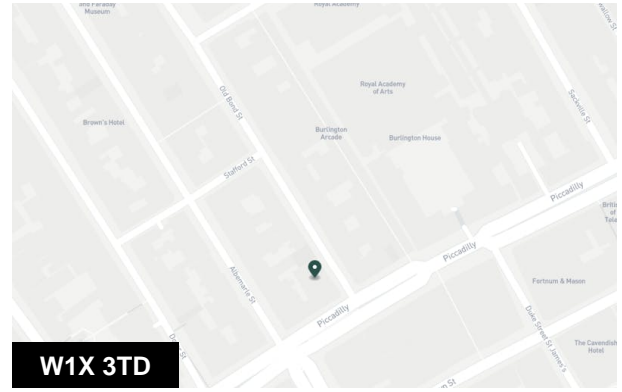
## Accommodation

The accommodation comprises the following areas:

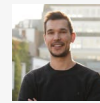
Name	sq ft	sq m	Availability
1st	200	18.58	Available
2nd	300	27.87	Available
<b>Total</b>	<b>500</b>	<b>46.45</b>	

## Documentation

At request



## Viewing & Further Information



**Demo (Basic Pro + Internal Insights)  
User**

01234567890 | 07777777777

chris.h-demo@kato.app