

**FOR SALE**

## Office, Serviced Office

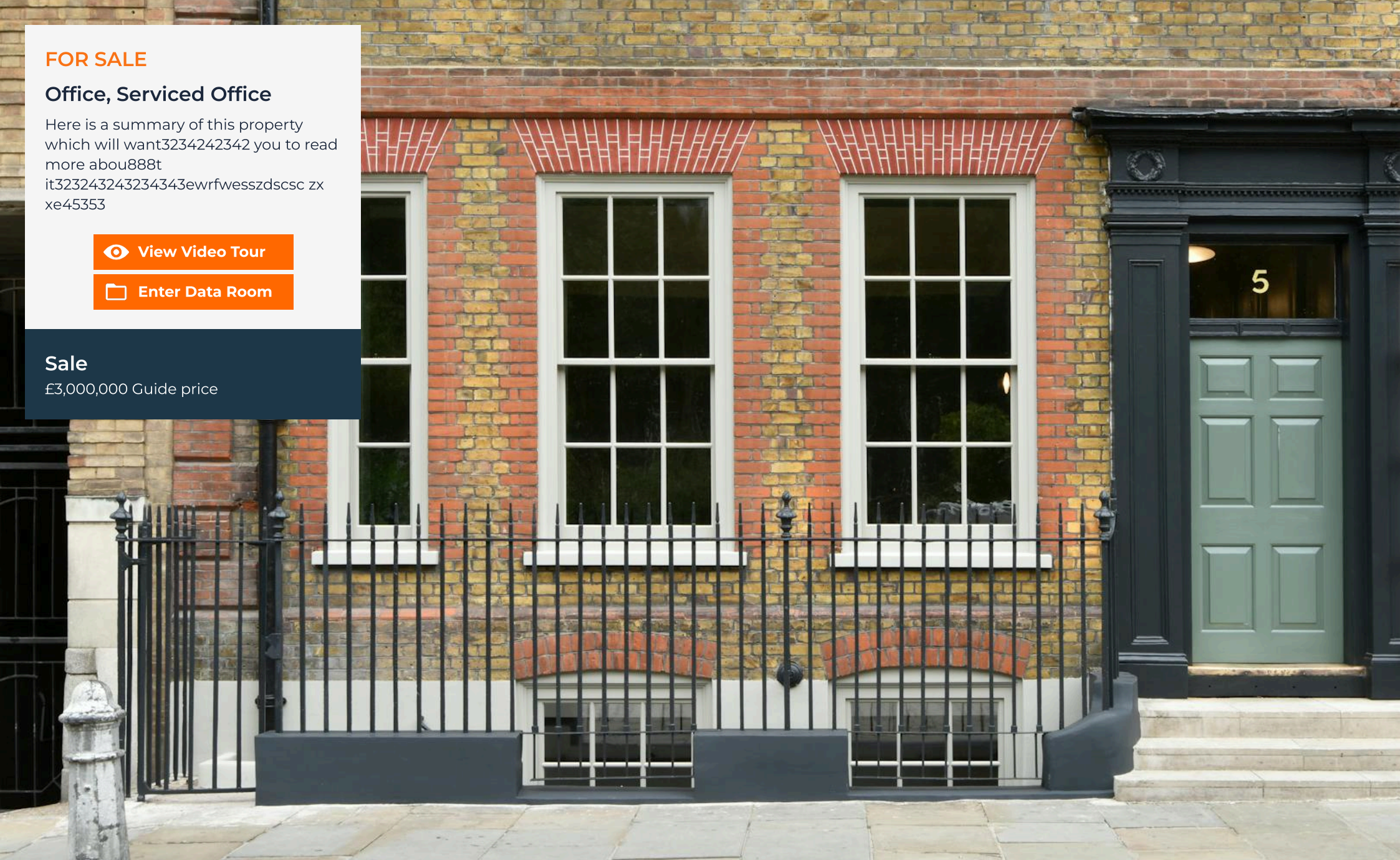
Here is a summary of this property which will want3234242342 you to read more abou888t  
it323243243234343ewrfwesszdcsc z x  
xe45353

 [View Video Tour](#)

 [Enter Data Room](#)

**Sale**

£3,000,000 Guide price



## Summary



Ancillary residential use on the 4th floor



Private terrace and courtyard



New point here



Showers and lockers



New key point...



New key point...



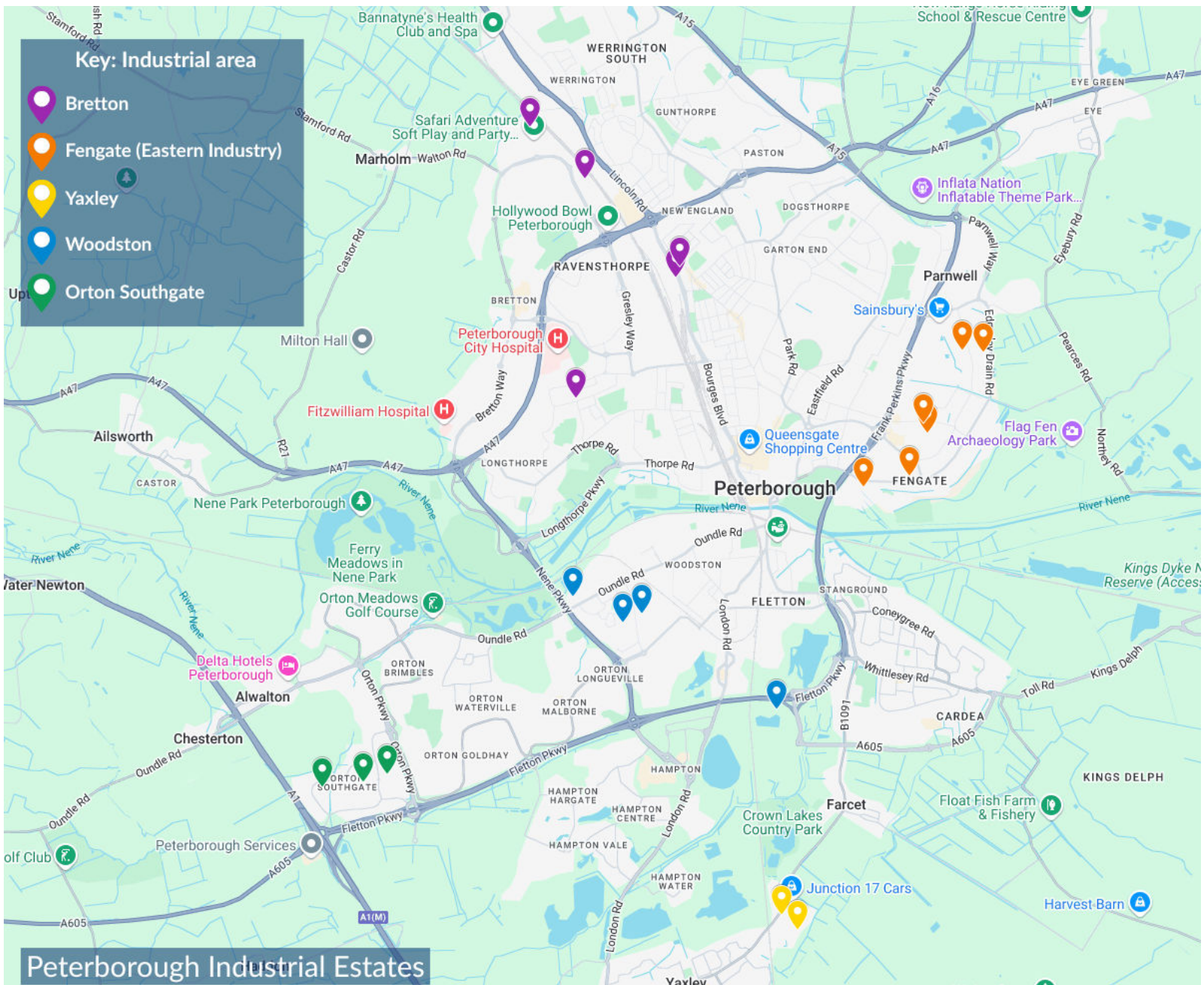


## Peterborough

Peterborough, a city in the East of England, has a diverse and growing retail market. It serves as a regional shopping hub with various shopping centers, high street stores, and local independent retailers. The Queensgate Shopping Centre is the largest in Peterborough, with a range of high-street brands, eateries, and entertainment options. It's a popular destination for both locals and visitors. Brotherhood, Peterborough One, Serpentine Green and Bretton are other notable retail areas.

- The total population within the Peterborough Primary Retail Market Area is estimated at 298,000 with a Consumer Base of 475,000 which are both significantly above other regional centres.
- Peterborough is projected to see significantly above average growth in population within its Retail Market Area over the period 2023-2028 .
- Peterborough attracts both domestic and international visitors to its historic city centre with Norman Cathedral

(all information from PROMIS RETAIL REPORT 2024)



## Peterborough

The Peterborough industrial market is an essential part of the UK's broader industrial and logistics sector. Located in the East of England, Peterborough benefits from its strategic positioning, offering strong transport links via the A1(M), A14, and direct access to London, which makes it an attractive location for businesses looking for distribution hubs or manufacturing spaces. Due to its proximity to key transport corridors, there is strong demand for warehouses and distribution centre's, particularly from e-commerce, retail, and logistics companies.

(all information from PROMIS RETAIL REPORT 2024)

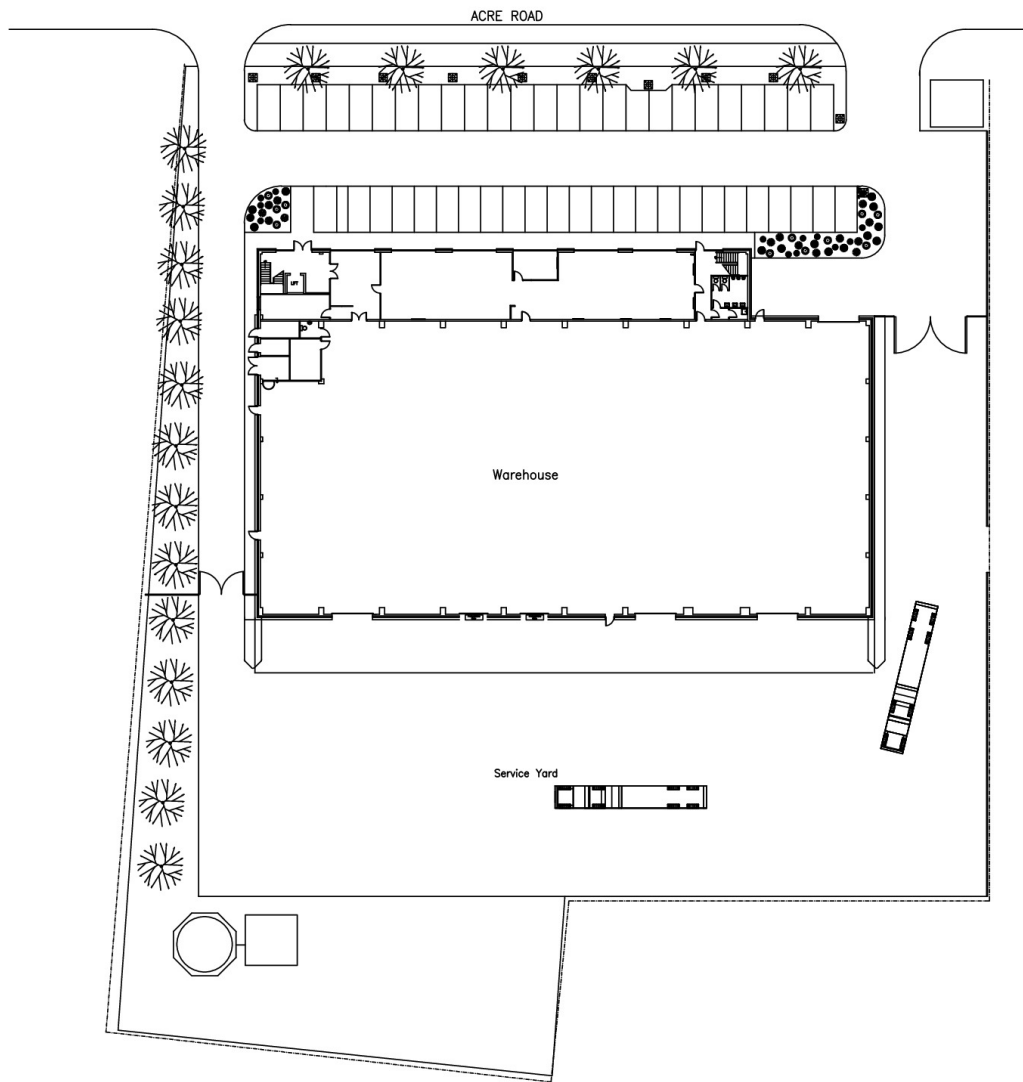


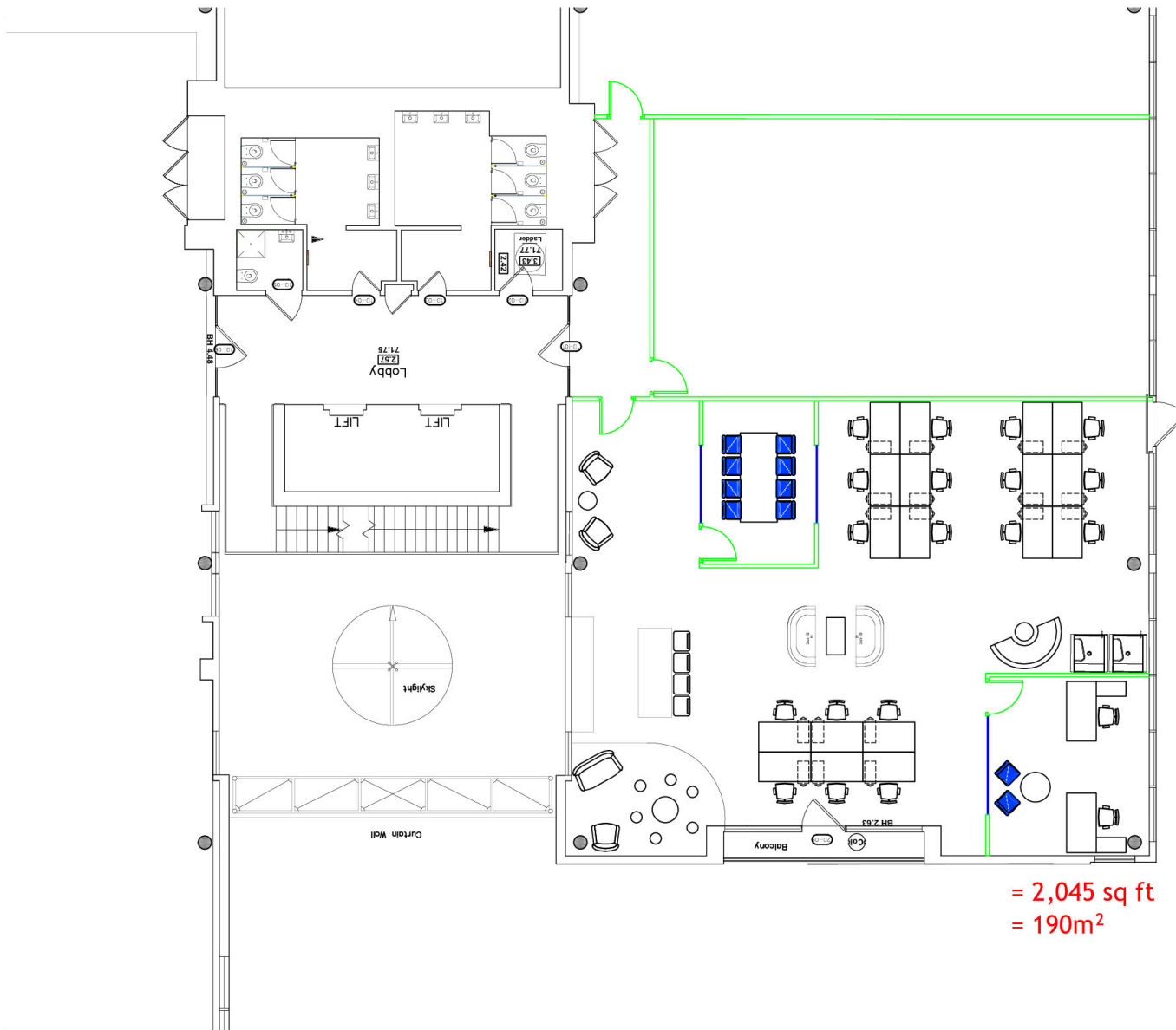
## Peterborough

Peterborough has a variety of office spaces, ranging from large corporate buildings to smaller, more flexible workspaces. Demand for physical office is increasing as businesses adapt to hybrid working models but tenants are looking for the best quality office space with inspiring and collaborative workspace, as well as access to amenity. Peterborough's city centre and nearby business parks are prime locations for office spaces. The city has excellent rail links to London, making it an attractive base for businesses looking for proximity to the capital without the high costs associated with office space in London. Development and regeneration projects such as ARU Peterborough, the IEG Green Technology Centre, Cygnet Bridge and Peterborough Station Quarter station improvement works are all helping improve demand for the City Centre.

(all information from PROMIS RETAIL REPORT 2024)







= 2,045 sq ft  
= 190m<sup>2</sup>

**CBS**

cbsofficeinteriors.co.uk  
01544 290290

Always check with drawing originator prior to scaling from this plan

Client  
Boultee Brooks

Project  
2nd Floor, The Lightbox,  
Bracknell

Drawing Title  
General Layout

Consultant Designer  
AS LN

Project Number Revision  
AS-0000780 B

Date Scale  
25.06.2019 1:100 @ A3

Rev	Date	Description
A	04.07.19	Space Reduced
B	24.07.19	Layout Revised

CLIENT SIGN OFF

DRAWING PURPOSE

**PROPOSED**

BUILDING DETAILS

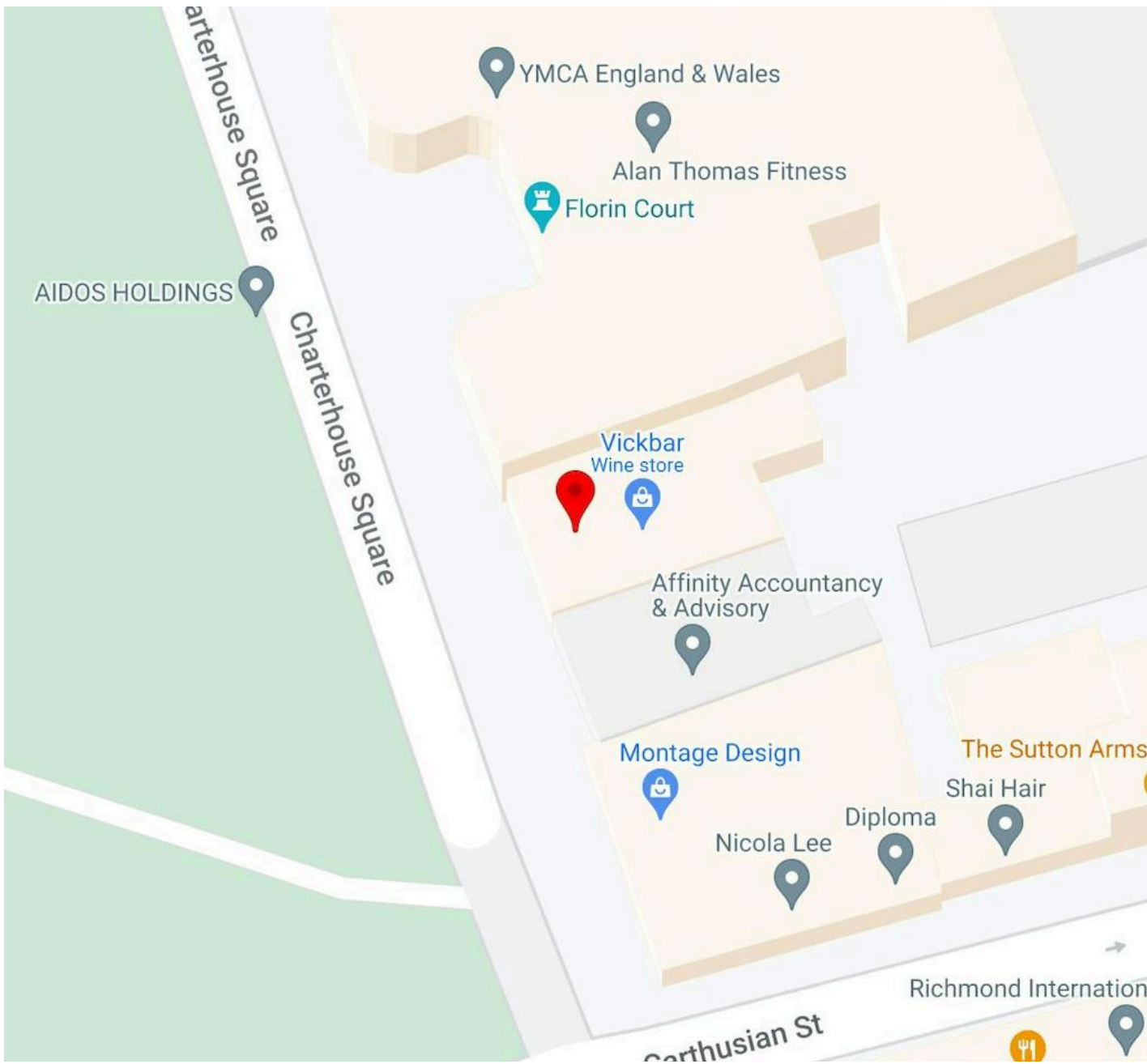
Power, Voice & Data provision

Ceiling height/s Sill height/s

© 2019 - This drawing is the property of CBS & should not be used, reproduced or copied by a Third party without prior written consent

5

Charterhouse  
Square  
EC1



## Location

Location text goes here add some more text here

## Accommodation

The accommodation comprises of the following

Name	Description	Building Type	Tenure	Availability
2nd		Office	For Sale / To Let	Let
1st		Office	For Sale / To Let	Let
Ground		Office	For Sale / To Let	Let
Suite - A	A	Office	For Sale / To Let	Let
Unit - Test	Test		To Let	Let
14th			To Let	Let
Unit - 1	1		To Let	Let

## DESCRIPTION

5 Charterhouse Square has been thoughtfully refurbished by Gibson Thornley Architects to emphasize the building's inherent character without compromising on the functionality or form demanded by a modern office.

The border of Clerkenwell and the City on which 5 sits continues to distinguish itself as one of London's most vibrant locations. The mixed use nature of the immediate surrounds, combined with the historically significant Smithfield Market, has drawn a vibrant collection of genuinely independent restaurants, shops and bars to the area.

Stunning views over the Square, exceptional transport links and established local amenities are increasingly drawing progressive occupiers away from traditional locations such as Soho/the City. Notable recent additions to the Square include Anomaly, Peakon, Jericho Chambers and Eventbrite. Crossrail and the City's 'Cultural Mile' will continue to stimulate the locality.

Transport links are excellent with the following walk times:

30 seconds - Farringdon East Elizabeth Line station

1 minute - Barbican Underground station

5 minute - Farringdon Underground and National Rail station

8 minutes - St Paul's Underground station

## TERMS

Here is some text about terms

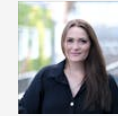
## EPC

Property graded as A-D

## ANTI MONEY LAUNDERING

To comply with our legal responsibilities for AntiMoney Laundering, it is necessary to check all parties involved in this transaction. It is the responsibility for parties on both sides to provide information necessary to complete these checks before the deal is completed.

## Further Information



**Katie Joanne Searle**  
disabled-katiesearle5@hotmail.com



**Michael Avery**  
07590 539220  
michael+user@tlgd.co.uk

Misrepresentation Generated on 13/03/2026