

TITAN UV-A FLOODLIGHT

Version 11022020

365nm UV-A LED Floodlight

The Titan UV-A Floodlight features 16 LED emitters giving great performance, with no hot spots in the beam pattern and is suited for a wide range of common NDT applications. These include background UV illumination when mounted over penetrant wash stations to check for adequate wash-off or above MPI bench units for inspection. The unit features a mounting bracket and is supplied with a mains power supply with UK 13A plug as standard.



Key Features

Peak Irradiance	>1,000 $\mu\text{W}/\text{cm}^2$ @ 380mm
Irradiated Area	400mm Dia. Circular Spot
Peak Wavelength	365nm \pm 5nm
Weight	1.5kg (approx.)

Technical Information

Meets or exceeds all requirements of ISO 9934 and ISO 3059 and many common magnetic particle and liquid penetrant inspection standards - Suitable for almost any NDT application.

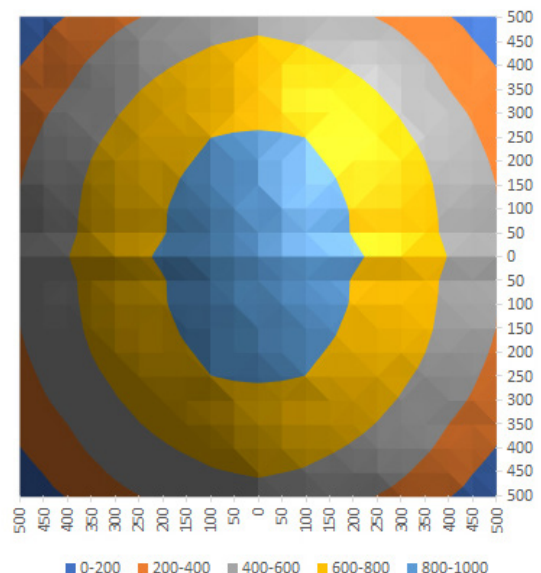
IP67 Ingress Protection rating - Water proof and dust proof to a depth of 1 meter.

Ideal for background illumination over wash stations and MPI bench units etc.

Features fixing mount for easy installation.

Contact our Technical Sales team if you require a demonstration.

Beam spread at 1,000 mm distance



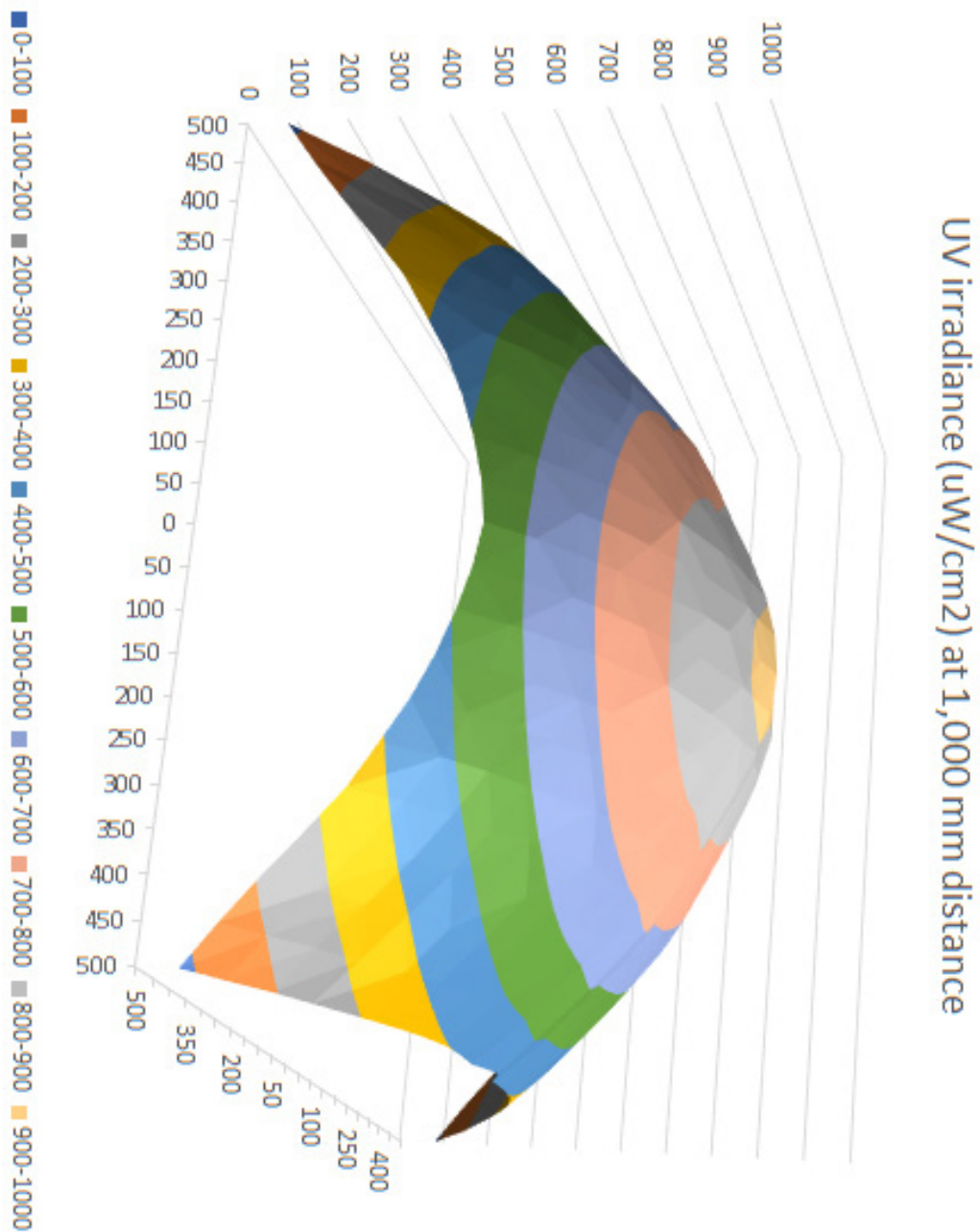
Johnson and Allen Ltd

Neocol Works, Smithfield, Sheffield, S3 7AR
Head Office: Tel: +44 (0) 114 273 8066 Email: info@johnsonandallen.co.uk
www.johnsonandallen.co.uk

TITAN UV-A FLOODLIGHT

Version 11022020

Beam Profile Data



Johnson and Allen Ltd

Neocol Works, Smithfield, Sheffield, S3 7AR

Head Office: Tel: +44 (0) 114 273 8066 Email: info@johnsonandallen.co.uk

www.johnsonandallen.co.uk

TITAN UV-A FLOODLIGHT

Version 11022020

Product Data

Emission Information	
Peak Irradiance (@ 380mm / 15 in)	> 1,000 $\mu\text{W}/\text{cm}^2$
Peak wavelength	365 nm \pm 5nm
Typical Irradiated Area (beam profile @ 380mm / 15 in)	400mm Dia. Circular Spot > 1,000 $\mu\text{W}/\text{cm}^2$ UV-A intensity
Typical Irradiated Area (beam profile @ 1000mm / 39 in)	500mm Dia. Circular Spot > 300 $\mu\text{W}/\text{cm}^2$ UV-A intensity
Full Width @ Half Max. (FWHM)	\leq 15 nm
Longest Wavelength @ Half Max. (LWHM)	\leq 377 nm
\pm Width @ Half Max.	$\leq \pm$ 10 nm
Full Width @ 10% Max. (FW10%)	\leq 30 nm
\pm Width @ 10% Max.	$\leq \pm$ 15 nm
Wavelength Drift (@ elevated temp.)	\leq 5 nm
Visible Light	<20 lux
General Information	
Dimensions	150 mm Dia. x 110 mm (approx.)
Operating Temp.	5-49 °C
Voltage (input)	100 to 240 V AC @ 50/60 Hz
Weight	1.5kg (approx.)

Standard Compliance

General NDT UV-A Specifications	Fluorescent Penetrant Specifications	Fluorescent Magnetic Particle Specifications
ISO 3059	ASTM E1417 ISO 3452	ASTM E1444 ISO 9934

Johnson and Allen Ltd

Neocol Works, Smithfield, Sheffield, S3 7AR

Head Office: Tel: +44 (0) 114 273 8066 Email: info@johnsonandallen.co.uk

www.johnsonandallen.co.uk