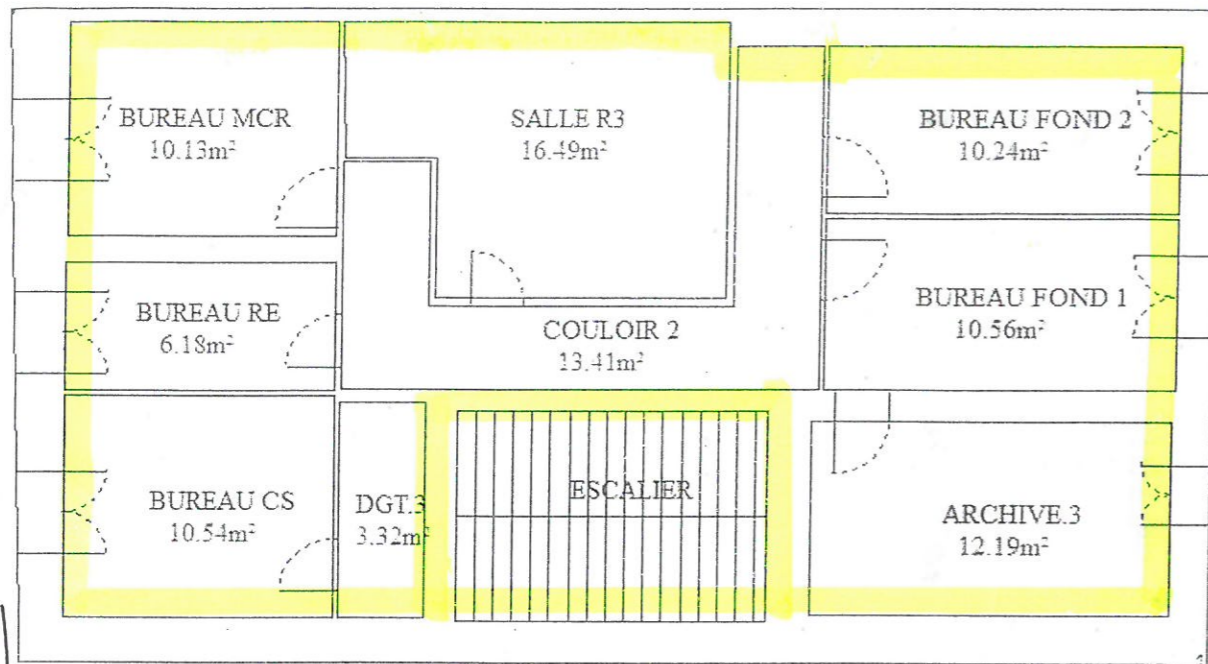
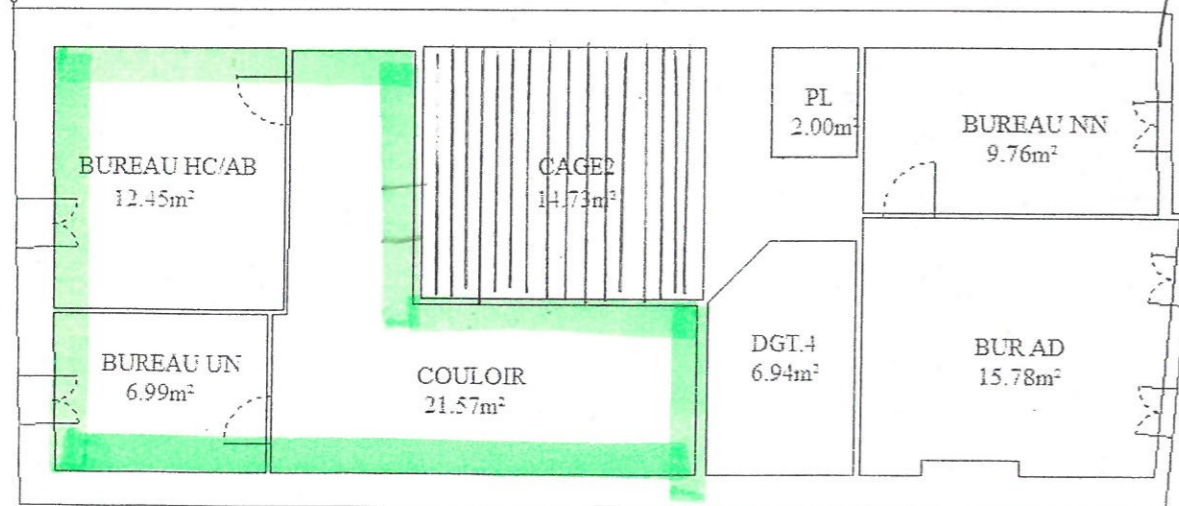


PLAN AU N°29 ETAGE 1: 93,06 m<sup>2</sup>

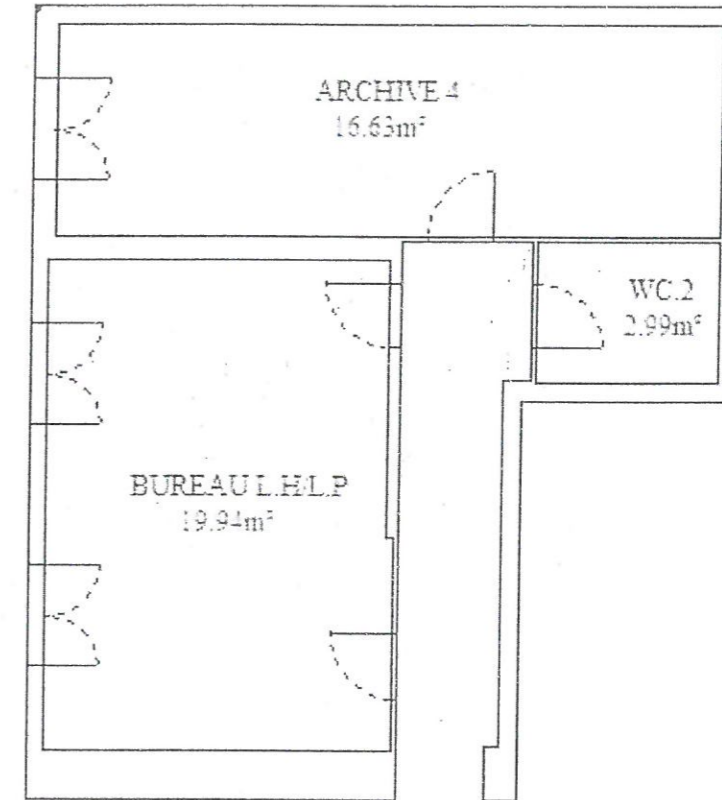


PLAN AU N°31 ETAGE 1: 41,01 m<sup>2</sup>



95

PLAN AU N°29 ETAGE 2: 39,56 m<sup>2</sup>



PLAN AU N°31 ETAGE 2: 82,73 m<sup>2</sup>

