



BPM WITH ARIS INTRODUCTION

Lecture Slides – Part I



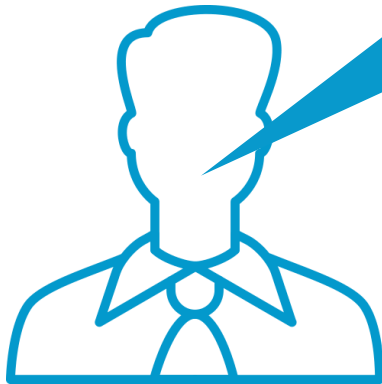
Software AG
University Relations



BUSINESS PROCESS MANAGEMENT

WHAT IS BPM?

Business Process Management (BPM) is a discipline that uses a set of methods to **document**, **design**, **analyze** and **optimize** business processes.



I started a task force to eliminate redundancies in our internal processes.

Really...?
I'm doing the same thing.



BUSINESS PROCESS MANAGEMENT

WHAT IS A MODEL?

A model is a **simplified representation** of an aspect of the real world.



Idea: Enhance the understanding of something complex by focusing only on its important characteristics.



Example: A map neglects most details of the real world. It shows only aspects that are important to find your way (e.g. streets, buildings).

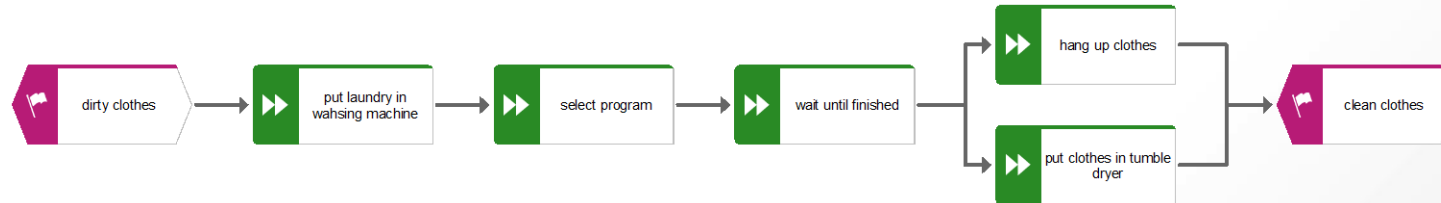
BUSINESS PROCESS MANAGEMENT

WHAT IS A PROCESS?

A process is a purposeful **sequence of activities**.

Example: process of doing your laundry

- Purpose = get your dirty clothes clean
- Sequence of activities = see model below
(Please note: for didactical matters this model breaches some model conventions)
- Notice how we used a 'split' pattern to model alternative paths

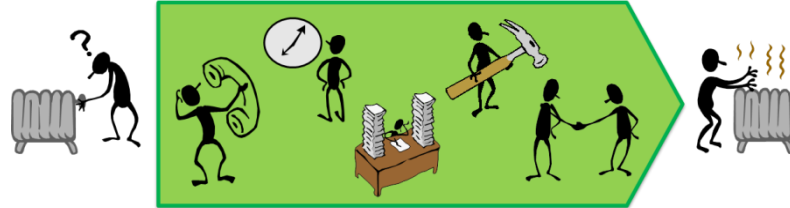


BUSINESS PROCESS MANAGEMENT

WHY CARE?

Company = Sum of Processes

- A company is nothing else than a combination of different, complementing processes
- Streamlining an organization means streamlining its processes

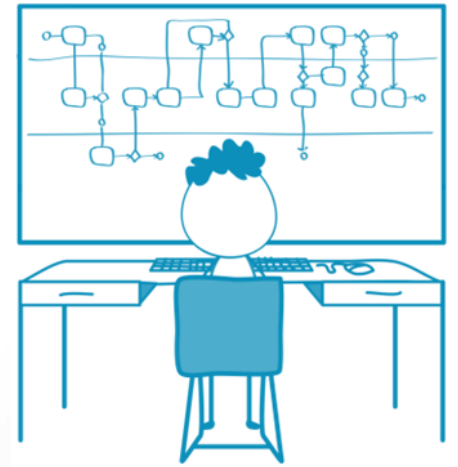


BUSINESS PROCESS MANAGEMENT

FIRST STEP: DOCUMENTATION

Only **explicitly formulated** processes allow to ...

- **Teach and preserve** processes (“best practices”) (e.g. when an employee decides to leave the company)
- **Analyze and improve** processes (if you don’t know exactly how somebody does a certain job, you won’t know how to make it better)



BUSINESS PROCESS MANAGEMENT

WHY ARIS?

Processes can be documented in **many ways**.

Textual

- Additional information (responsibilities, data input, templates, etc.) cannot be written down neatly
- Splits are also difficult to write down

Tabular

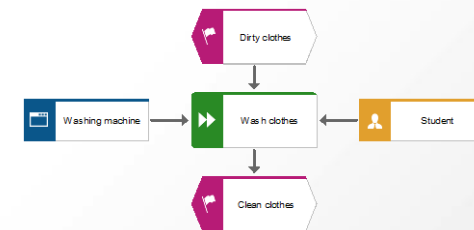
- Additional information can be neatly written in columns
- Splits are still difficult to model

Graphical

- Easy to add details without losing focus
- Splits are easily modeled

First you need to put your laundry in the washing machine, then you ...

#	Activity	Responsible	System	...
1	Put laundry in	Student	Washing Machine	...
2	
3				



BUSINESS PROCESS MANAGEMENT

WHY ARIS?

ARIS* is **more** than your regular sketching tool!



Document & Design

ARIS is an intuitive tool that makes it easy for you to document & design complex processes systematically.



Analyze & Optimize

ARIS provides you with various reports, tools and functions to analyze & optimize your processes.



Collaborate & Govern

ARIS is a hub and central repository, used to share all process information and to work together on continuous process improvement.

*ARIS may refer to the software (this case) or to the ARIS Method (a meta-model for process modelling).

LEARN MORE

Students / Universities

→ University Relations
www.softwareag.com/university

☰ World-wide mail account
university@softwareag.com

Customers / Partners

→ Global Education Services
www.softwareag.com/education

☰ Regional mail accounts
Please refer to “[contact us](#)” section on the webpage mentioned above.

