

# ARIS Education Package Process Design & Analysis Installation Guide

March 2013

## Table of contents

<b>1.0 INTRODUCTION</b>	<b>3</b>
<b>2.0 requirements</b>	<b>3</b>
2.1 Hardware	3
2.2 Software	3
<b>3.0 Unzip the virtual machine</b>	<b>3</b>
<b>4.0 Open the virtual machine in VMware Player</b>	<b>4</b>
<b>5.0 Start the virtual machine</b>	<b>6</b>
<b>6.0 Insert Microsoft Win7 licensens</b>	<b>6</b>
<b>7.0 Insert Software AG License</b>	<b>9</b>
7.1 ARIS Business Architect	10
<b>8.0 Accounts and Passwords</b>	<b>11</b>
8.1 Windows Account	11
8.2 SQL Sever	11

## 1.0 INTRODUCTION

This document will show you, how to setup the ARIS Education Package  
Process Design & Analysis Version 1.4

## 2.0 REQUIREMENTS

### 2.1 Hardware

CPU: Dual Core

RAM: 4GB

Disc Space: 40GB

### 2.2 Software

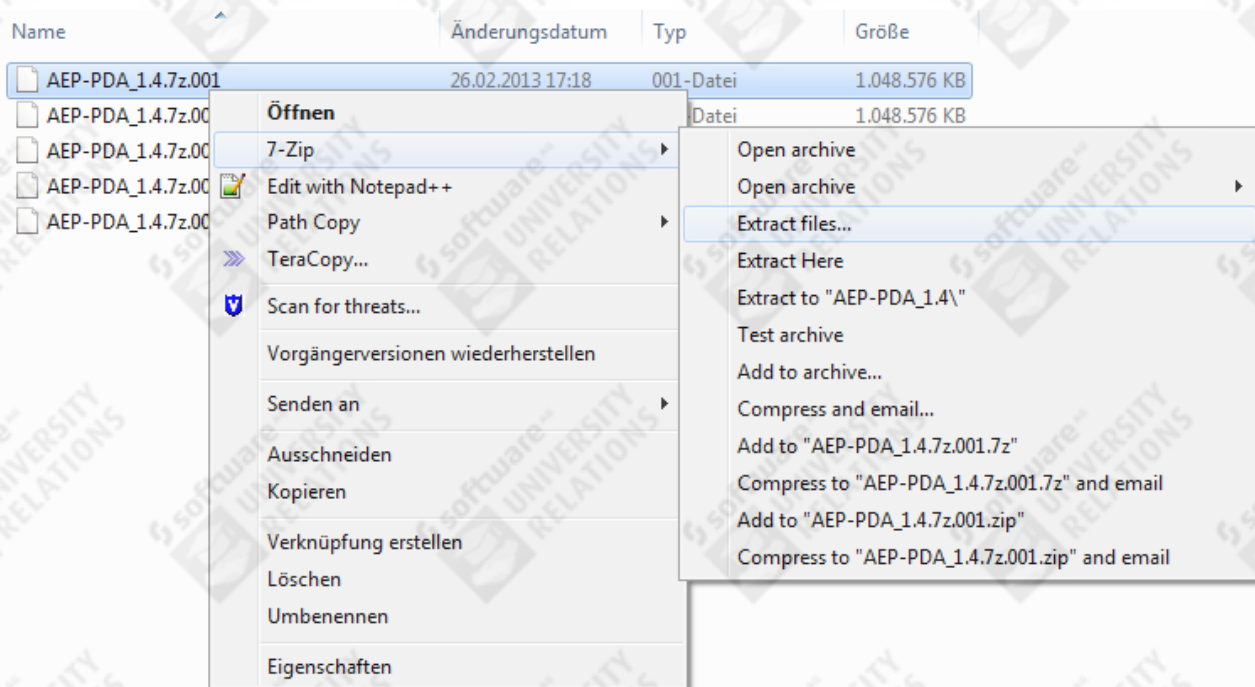
7zip

VMware Player 4

Windows 7 x64 MSDAA license

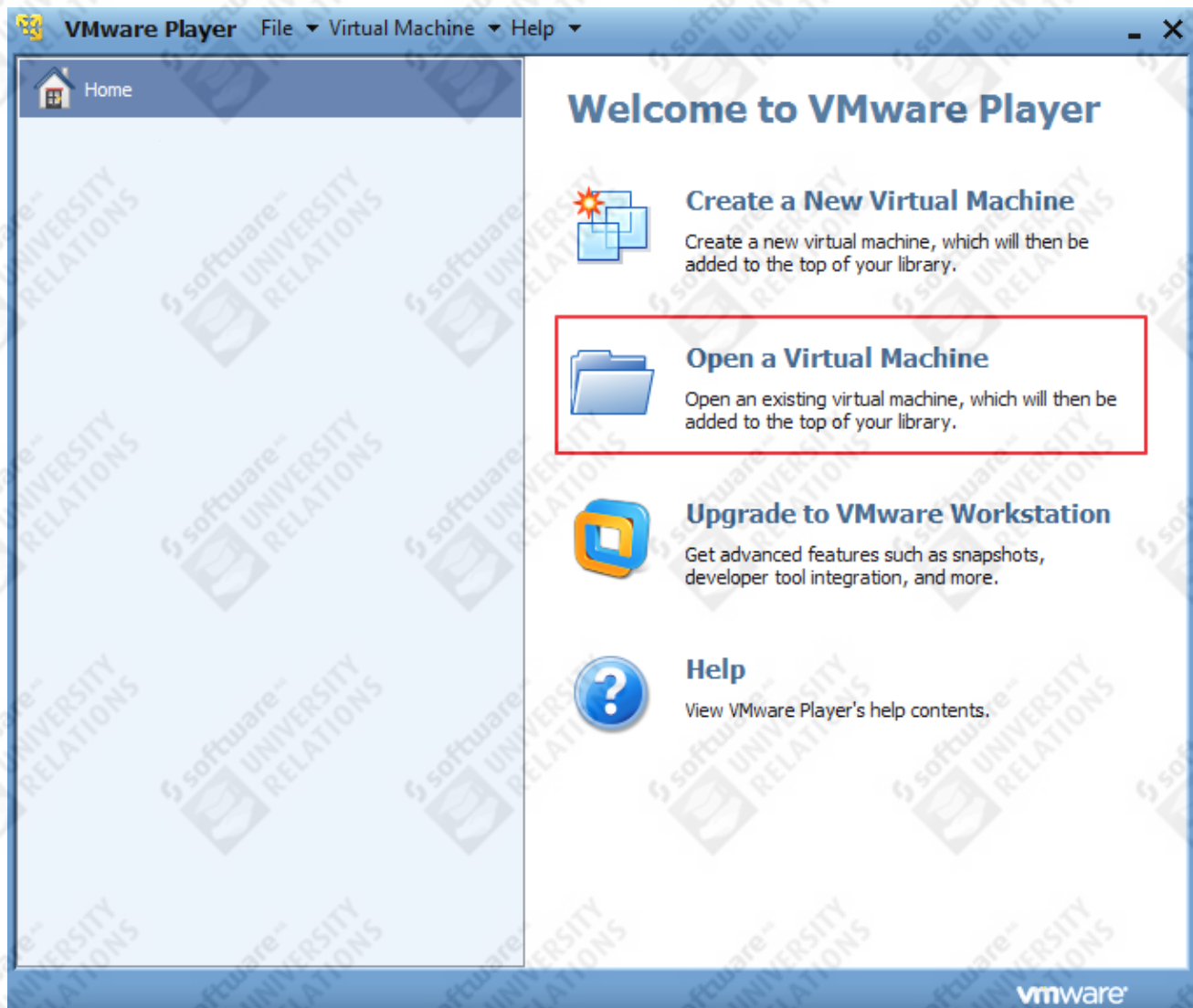
## 3.0 UNZIP THE VIRTUAL MACHINE

1. Download all five parts from the package.
2. Put them in one folder.
3. Extract the package



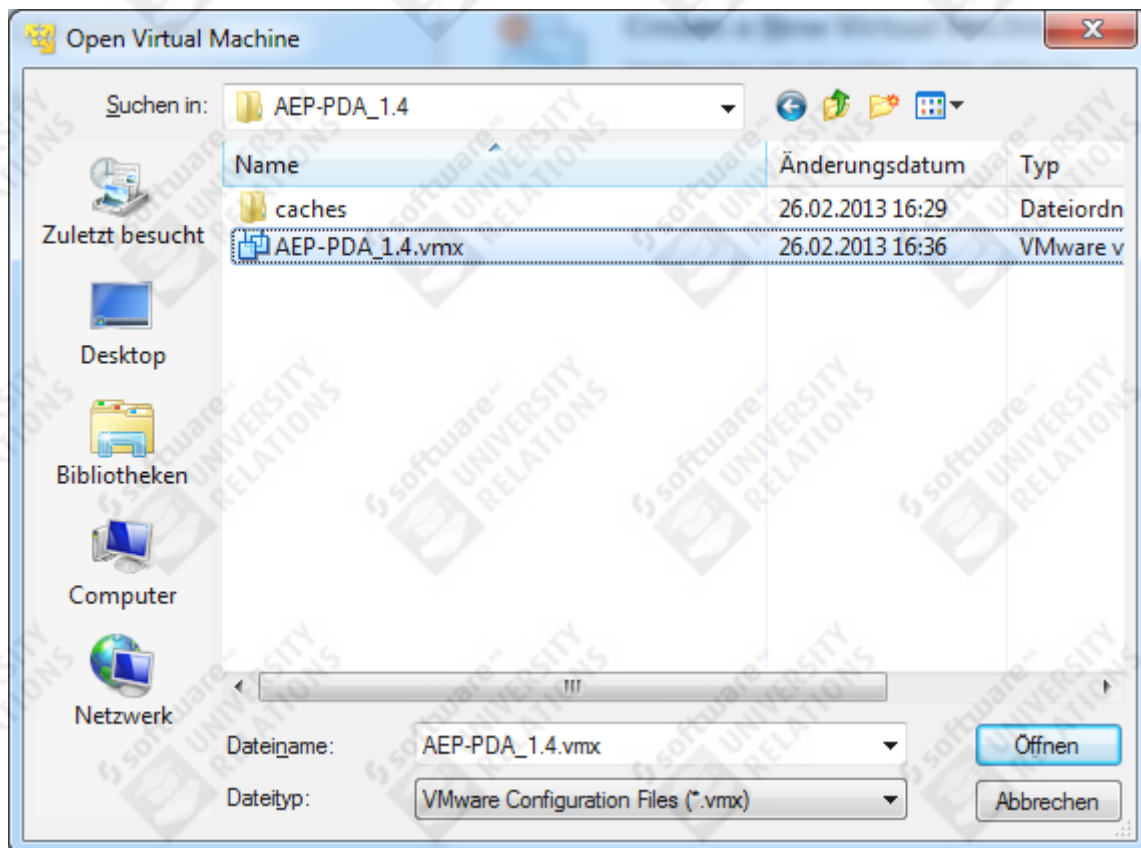
## 4.0 OPEN THE VIRTUAL MACHINE IN VMWARE PLAYER

1. Start the VMware Player
2. Click on Open a Virtual Machine.



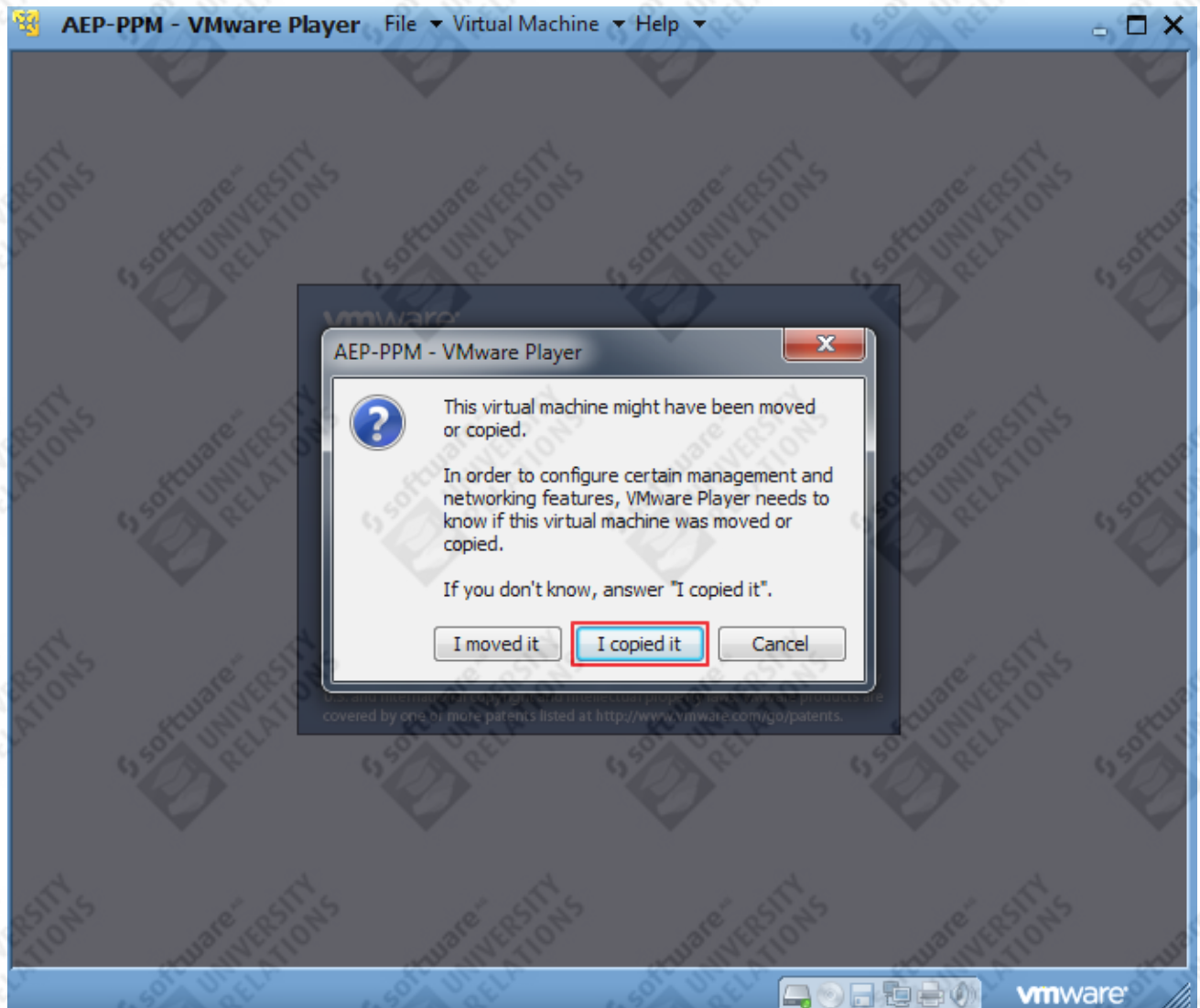
3. Navigate to the unzipped machine.
4. Choose the **AEP-PDA.vmx**





## 5.0 START THE VIRTUAL MACHINE

1. Press on Play the virtual machine.
2. Press on the I copied it button

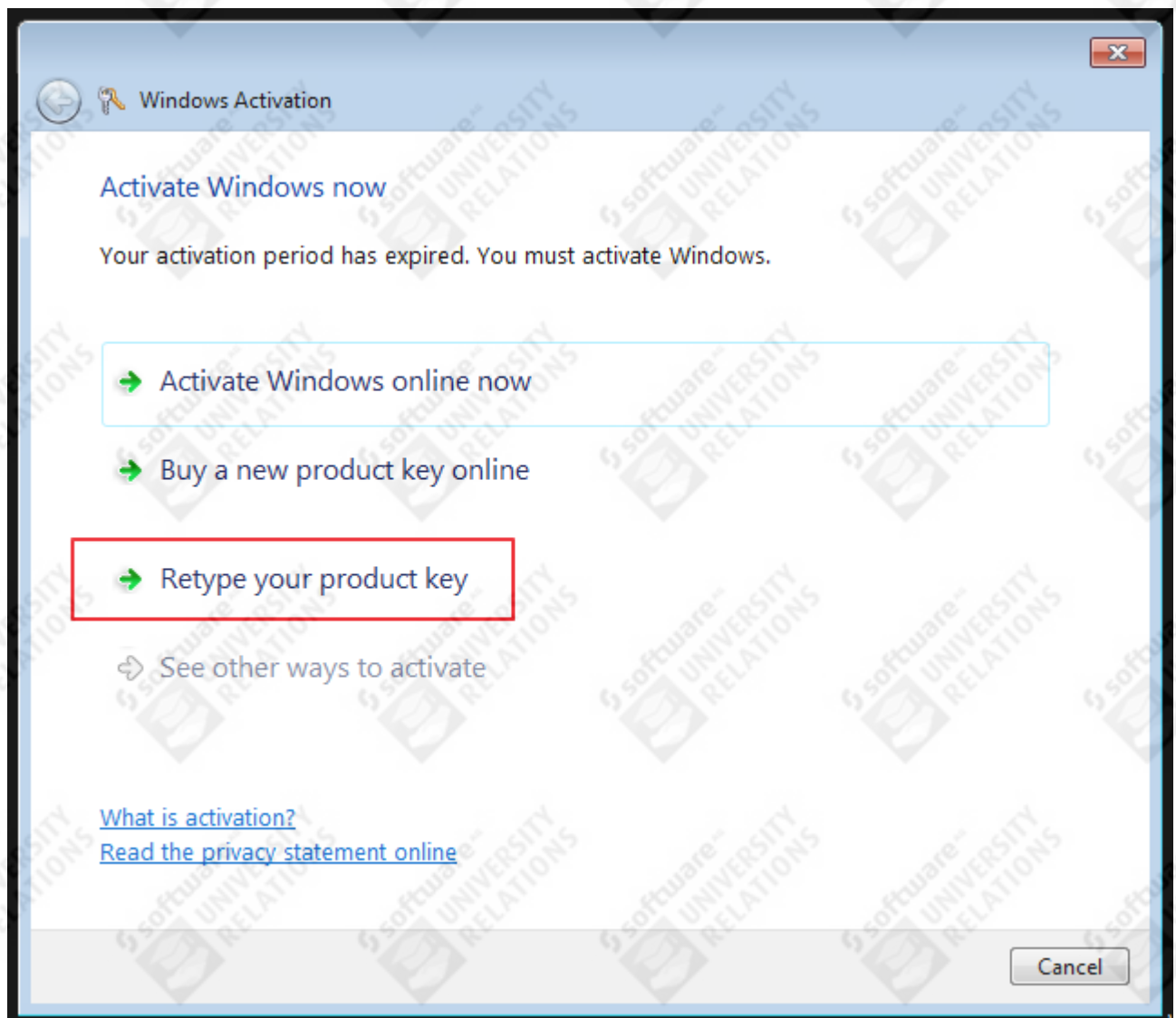


## 6.0 INSERT MICROSOFT WIN7 LICENSES

1. Login as *AEP-PDA*, use *manager* as password.

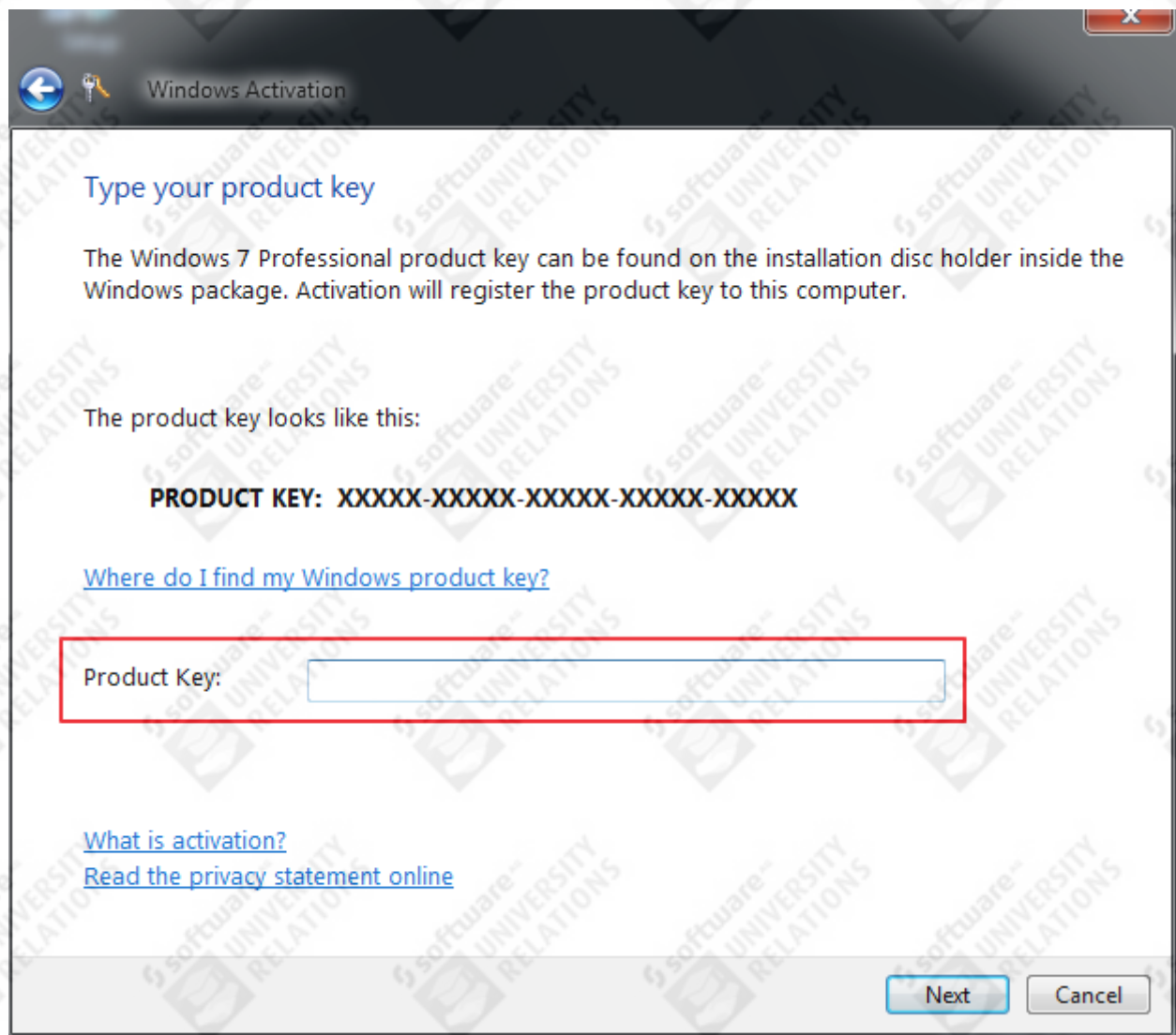


2. Click on **Activate now**.
3. Click on **Retype your product key**.



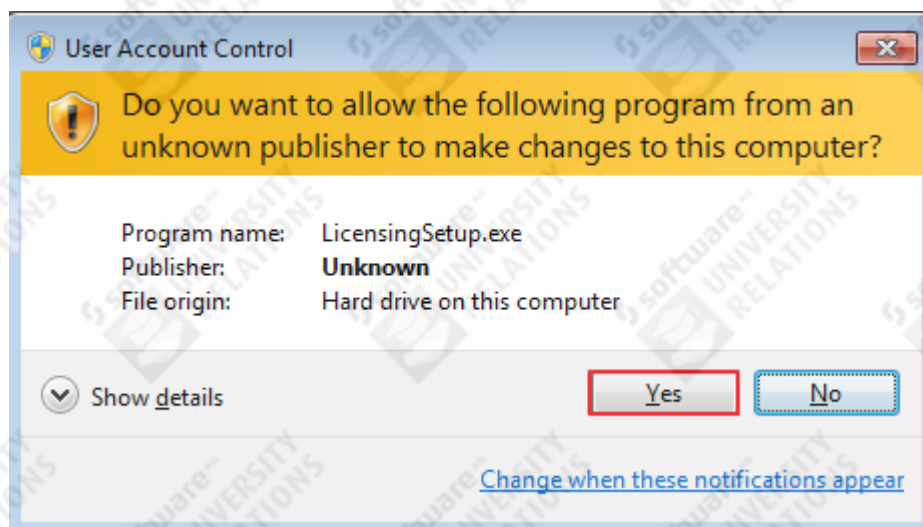
4. Enter your MSDAA Windows 7 x64 key and Press Next.



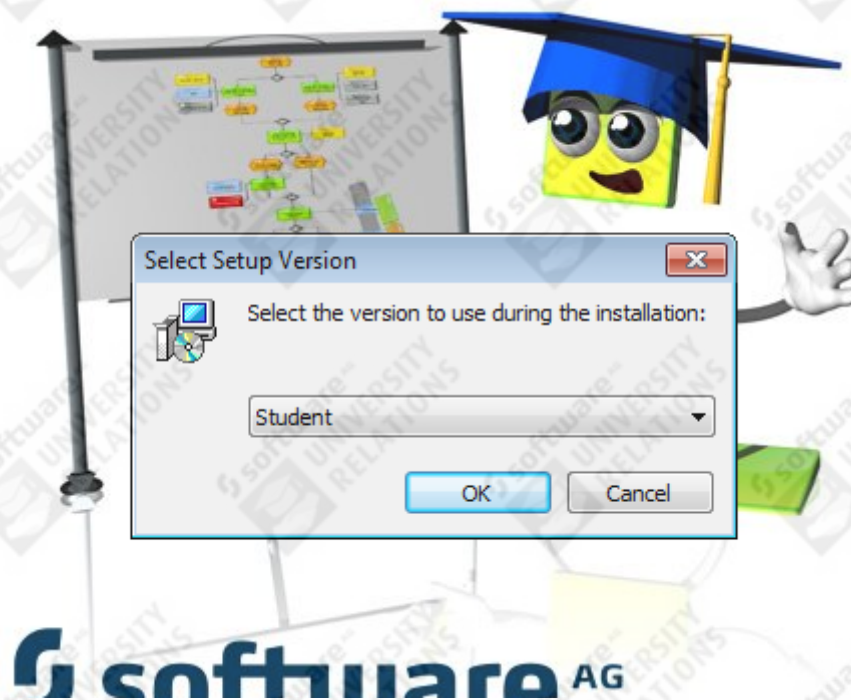


## 7.0 INSERT SOFTWARE AG LICENSE

1. Accept the Licensing Setup

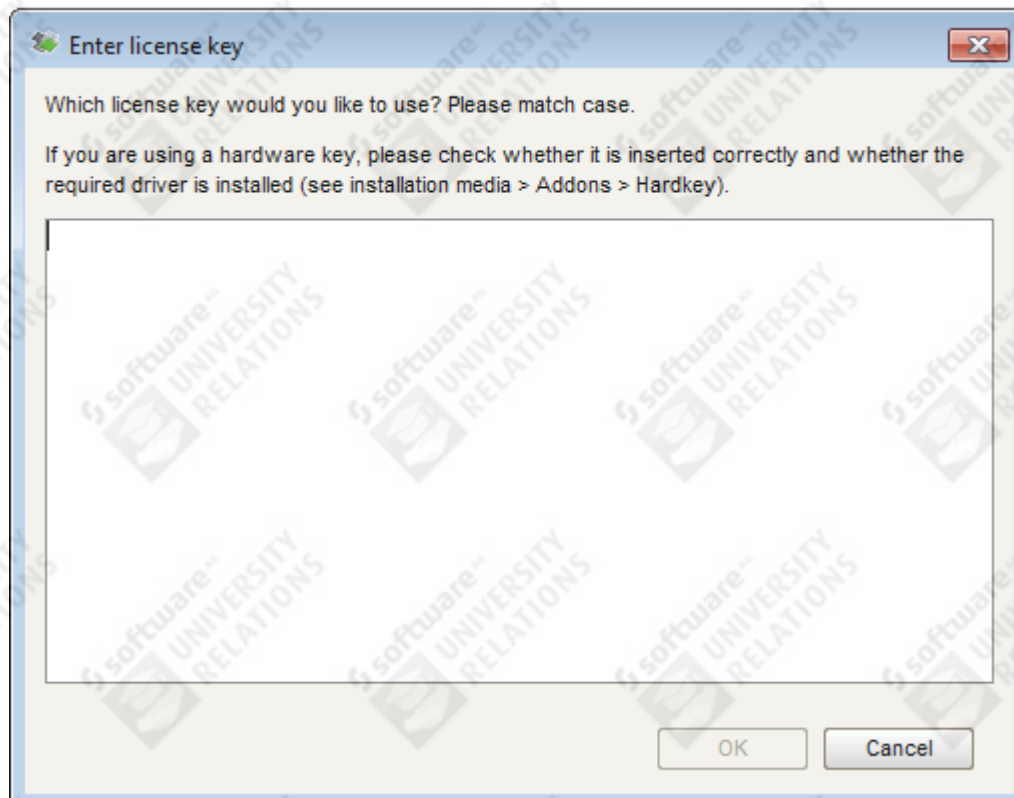


2. Choose your type of the ARIS Education Package and follow the Software AG PDA Licensing Setup



## 7.1 ARIS Business Architect

1. Open ARIS Business Architect
2. Insert your ARIS Business Architect Key and confirm with OK



## 8.0 ACCOUNTS AND PASSWORDS

### 8.1 Windows Account

AEP-PDA / manager

### 8.2 SQL Sever

sa/manager

