




# U.S COAST GUARD CASE STUDY

**Animex**  
www.animexfencing.com

USA: +1 (800) 210-9896

CAN: +1 647-725-7538

EUR: +44 1329 832 841

 /animexfencing  
 @animexfencing  
 /animexfencing

## PROJECT INFO

*Fencing Type:* AMX-T48

*Installation:* Above Ground

*Longevity:* Temporary

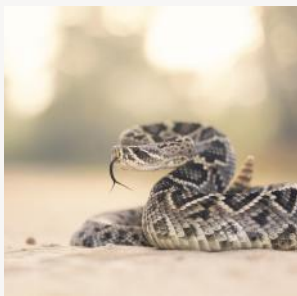
*Species:* Alameda Whipsnake &  
Northern Pacific Rattlesnake

*Client:* U.S. Coast Guard

*Location:* Mt. Diablo, California

## SUMMARY

Plastic mesh fencing had been installed to exclude snakes from a remote U.S. Coast Guard communications facility. However, following sightings of Alameda Whipsnakes (*Masticophis lateralis euryxanthus*) and their venomous relative, Northern Pacific Rattlesnakes (*Crotalus oreganus*), there were concerns that mesh fencing was not effectively excluding snakes. Animex was installed around the staging area, affixed to the perimeter chain-link fence and weighed down with gravel bags, to protect the crew living onsite. Animex functions as a unique sensory barrier that works on a behavior level to deter wildlife and there were no sightings in the staging area after its installation.



### Challenges

- Concrete
- Venomous snakes
- High winds



### Actions

- Lightweight materials
- Installation supervision
- Above ground



### Outcomes

- Low cost
- Resuable
- Sensory barrier

