

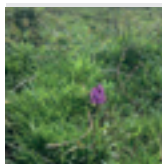
## HABITATS



### Preliminary Ecological Assessment

A visual assessment of the site and surrounding landscape  
First step to inform if other surveys are required  
May be undertaken at any time

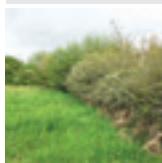
JAN FEB **MAR** APR MAY JUN JUL AUG SEP OCT NOV DEC



### Vegetation Survey

Detailed habitat classification and identification of rare flora species  
May require several site visits across the active survey season

APR MAY JUN JUL AUG SEP OCT



### Hedgerow Assessment

Establish the type, quality and importance of hedgerows on site  
Most optimal in summer months with full leaf cover

APR MAY JUN JUL AUG SEP OCT

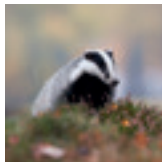


### River Corridor Assessment

Establish major habitats, physical features and quality of river  
Most optimal in summer when riparian vegetation has full cover

MAY JUN JUL AUG SEP OCT

## PROTECTED SPECIES SURVEYS

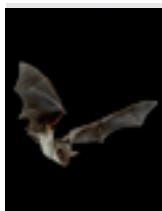


### Badgers

**Legal Protection:** Badgers and active badger setts are protected within 20m of the sett entrance.

**Habitat:** Woodland, pasture, scrub, grassland, setts often built into slopes  
**Survey:** Camera traps are used to determine if a sett is active

JAN FEB MAR APR MAY JUN JUL AUG SEP OCT NOV DEC



### Bats

**Legal Protection:** All bat species and roosts are protected.

**Habitat:** Roost in mature trees, buildings, bridges or other structures  
**Survey:** A Phase I classifies the potential for Bats on site, after which Phase II Surveys may be undertaken as appropriate

MAY JUN JUL AUG SEP Emergence surveys\*  
APR MAY JUN JUL AUG SEP OCT Activity surveys

\* Surveys must be spaced out by 2 weeks and if a structure has high potential or is a confirmed roost, two surveys must be completed by the end of August. Low / Moderate potential buildings should also have surveys complete by the end of August.



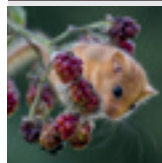
### Birds

**Legal Protection:** All birds and nests are protected. Some designated sites are also protected for birds.

**Habitat:** Various depending on species, including coastal, woodland, scrub, grassland, wetland and pasture  
**Survey:** Breeding bird, Wintering bird and Barn Owl surveys are to identify species using the site whilst Nesting surveys are to identify any active nests

MAR APR MAY JUN Breeding bird surveys  
MAR APR MAY JUN JUL AUG Nesting bird surveys  
JAN FEB MAR Wintering bird surveys OCT NOV DEC  
JAN FEB MAR APR MAY JUN JUL AUG SEP OCT NOV DEC Barn Owl surveys

## PROTECTED SPECIES SURVEYS



### Hazel Dormice

**Legal Protection:** Hazel Dormice and their habitat are protected.

**Habitat:** Woodland, scrub and hedgerows

**Survey:** Nest tubes or boxes are placed in habitat and surveyed over several months to determine if Dormice are present within the habitat

APR MAY JUN JUL AUG SEP OCT NOV



### Great Crested Newts (GCN)

**Legal Protection:** GCN and their habitats are protected.

**Aquatic Habitat:** Ponds, marshes or still water bodies

**Terrestrial Habitat:** Grassland, scrub, woodland or pasture, usually within 500m of their breeding pond

**Survey:** eDNA can be used to determine absence/presence in a pond but Phase II Surveys are required if GCN are present for a population estimate

APR MAY JUN eDNA surveys  
MAR APR MAY JUN Phase II surveys



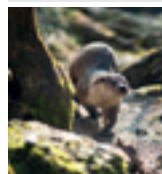
### Invertebrates

**Legal Protection:** Some rare species are protected.

**Habitat:** Wide variety of different habitats

**Survey:** An inventory will be taken of aquatic and/or terrestrial invertebrates  
Surveys sometimes required if there are nearby important species records

MAR APR MAY JUN JUL AUG SEP OCT



### Otters

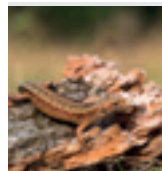
**Legal Protection:** Otters and their habitat are protected.

**Habitat:** Rivers, streams, coast and ditches and riparian terrestrial habitat

**Survey:** Visual search of waterbody and riparian habitat for evidence, sometimes with use of camera traps, undertaken at different times of year\*

JAN FEB MAR APR MAY JUN JUL AUG SEP OCT NOV DEC

\*Please note, there must be at least 5 days prior to a survey without any rain



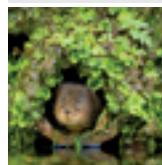
### Reptiles

**Legal Protection:** All reptiles are protected. Habitat is protected for Smooth Snakes and Sand Lizards.

**Habitat:** Grassland, scrub, agricultural fields, gardens and more

**Survey:** Reptile refugia are distributed and checked seven times during suitable weather conditions

MAR APR MAY JUN JUL AUG SEP



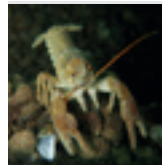
### Water Voles

**Legal Protection:** Water Voles and their habitat are protected.

**Habitat:** Rivers, canals, ditches, streams, ponds and riparian vegetation

**Survey:** Visual search of waterbody and terrestrial habitat for evidence

APR MAY JUN JUL AUG SEP OCT



### White-clawed Crayfish

**Legal Protection:** White-clawed Crayfish and their habitat are protected.

**Habitat:** Rivers and streams (especially base-rich)

**Survey:** Standard method is manual search of potential refuges

MAY JUN JUL AUG SEP OCT eDNA surveys  
JUL AUG SEP Phase II surveys

OPTIMAL SURVEY TIME

SUB-OPTIMAL SURVEY TIME

## CONTACT US FOR ASSISTANCE