

Newcastle and Stafford Colleges Group Annual Accountability Statement

May 2023

1. College Mission and Purpose

1.1 About us

Newcastle-under-Lyme College and Stafford College merged in 2016 to form Newcastle and Stafford Colleges Group (NSCG). NSCG is Staffordshire's largest and most successful further education provider, placed in the top 5% of general further education (GFE) colleges nationally. Our campuses provide a friendly welcome, with first class facilities and a dedicated staff team who put student success at the heart of everything they do.

In October 2019 NSCG became the first college nationally under the new Inspection Framework to be recognised by Ofsted as 'outstanding' in every category of its activity. We remain one of two GFE colleges to achieve this and the only one in the West Midlands region.

As a Corporation, our guiding principle is to ensure that NSCG is recognised as an outstanding organisation where students and staff thrive, achieve and make a positive contribution to the cultural and economic prosperity of Staffordshire and beyond.

Whether we are celebrating our 'student of the month', our A Level results, our staff successes or our sporting triumphs, we love to share fantastic achievements from across the group to help inform, inspire and motivate others.

We work hand in hand with our local communities. Our students regularly use their new skills to carry out community development work, host events and raise vital funds and awareness for local and national charities.

Overall, we offer a wide range of further education programmes for 16-19 year olds (a mix of A levels, BTECs and other vocational programmes and T Levels), Higher Education, Adult Learning, and Apprenticeships.

The number of students studying at the College during 2022/23 by educational pathway is outlined below:-

Study Programme	No of learners	Newcastle	Stafford
16-18 study programmes	5,249	3,265	1,984
Level 3 Learner Loans	112	62	50
HE	277	194	83
Apprenticeship	1,413	923	490
Adult Learners - Full Time	56	28	28
Adult Learners - Part Time	599	341	258
Community Learning	324	184	140
Charged for courses	605	465	140
TOTAL	8,635	5,462	3,173

We have more than 1400 apprentices with success rates over 13% above the national average. Our work-based-learning team works collaboratively with over 850 employers throughout Staffordshire and the wider region to foster long-term relationships and support learner development and business growth and prosperity.

We have a highly committed Student Support department to offer assistance to those students for whom finance is a barrier to their accessing education. Our team works to support our most vulnerable students by offering means tested bursaries to fund meal and travel costs and the costs of materials and uniforms. We also have a team who

support students in terms of their emotional wellbeing via our specialist welfare officers and counsellor provision.

1.2 Academic results

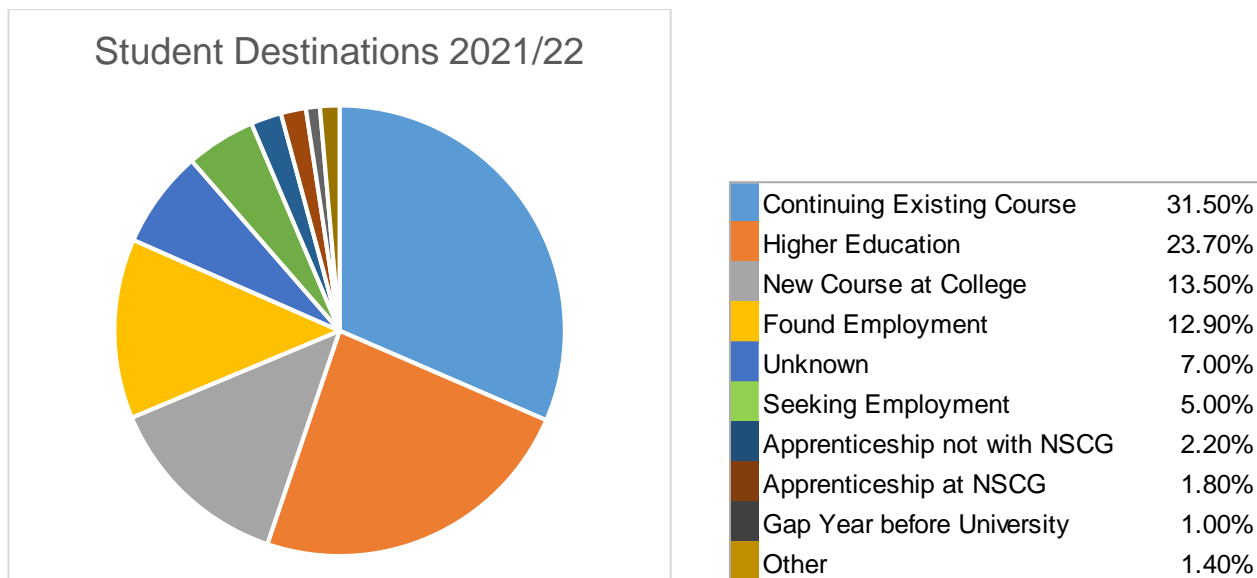
We are immensely proud of the resilience, drive, determination and ambition that is demonstrated by our students. Following two years of COVID disruption, the NSCG 'Class of 2022' totally bucked the national trend to pick up record breaking results, which exceed all national benchmarks.

- 1227 A Level entries were made with a pass rate of 99.1%.
- 1222 BTEC Extended Diploma entries with 98.4% pass rate
- 64.7% of BTEC Extended Diploma entries achieved high grades DDD or above (equivalent to AAA at A Level)
- Our apprenticeship achievement rates are more than 13% above the national average, placing NSCG as the leading college provider in the region.
- We currently work with more than 850 employers across Stoke-on-Trent, Staffordshire, Shropshire and Cheshire, supporting more than 1400 apprentices in a wide range of industries to "earn whilst they learn".

Achieving three or more substantial qualifications is key to unlocking progression on to university and into a good career.

For several consecutive years NSCG has been the largest provider of students to higher education in Staffordshire, with 1140 students progressing to over 83 different universities in 2021/22.

Our results demonstrate the fantastic commitment shown by both our students and our staff.



1.3 Facilities

We have invested over £122m in our estate and facilities since 2010, £42.5m since 2016. In Summer 2023, the College will be relocating its current Engineering, construction and sports provision to a brand new state-of-the-art £29M Skills and Innovation Centre. This will contain leading edge equipment to deliver state of the art skills in construction, engineering and motor vehicle maintenance and operation.

NSCG has been selected to lead the development of the Stoke-on-Trent and Staffordshire Institute of Technology, one of 21 new institutes nationally. Working in partnership with Burton & South Staffordshire College, Keele University and Axia Solutions, the Institute will put in place from September 2024 a range of new higher-level provision including Higher Technical Qualifications, Higher Apprenticeships, full-cost training and degree programmes. Along with our five key employer partners and other local companies, these programmes will be designed to have highly relevant content to prepare students with the skills they need to support Stoke-on-Trent and Staffordshire to thrive into the future. Programmes will focus predominantly on: engineering and advanced manufacturing; technical construction; digital (coding, cyber-security and artificial intelligence). The £18m IoT is scheduled for completion in December 2024.

By working with our local employers, including both large and smaller companies, we will carefully tailor our programmes to ensure they deliver the cutting-edge technical skills our industries need, along with the broader business and employability skills that help make the difference. Our programmes will focus on equipping learners with higher-level future facing skills and knowledge, enabling them to maximise the impact of the rapid innovations taking place across our technology industries including automation, artificial intelligence and virtual and augmented reality. The ultimate goal will be to provide a pipeline of skilled workers, to support the local economy, both now and in the future.

2. Strategic Aims, Objectives and Priorities

2.1 The current strategic plan dated 2019 is available at the link below:-

<https://nscg.ac.uk/about-us/management-governance>

The College appointed a new Principal / CEO, Mr Craig Hodgson for 2022/23. The College is currently going through the process of reviewing its Strategic Plan to identify areas of strategic priority over the next three years.

The plan is underpinned by 4 pillars which support the College's strategic intent. The pillars that we see as crucial to the foundation of the College are: our students; our staff; our stakeholders; and our sustainability. Through success in these area, we plan to further strengthen our contribution to the wider success and sustainability of Staffordshire, Stoke-on-Trent and the local area. Below is an overview of the College's high level strategic intents over the next three years (currently draft).

STUDENTS

Our students are at the heart of our College community. We will maintain our consistently strong reputation for the quality of our student experience, the strength of our student support and our commitment to expanding the horizons of our students. Our students will feel safe, happy and well prepared for their next steps.

STAFF

Our talented and diverse teams are the foundation of NSCG's success and critical to our future. We will attract, recruit and retain the best people, and support them to ensure they feel engaged, valued and empowered to grow. Together we will achieve great things.

SUSTAINABILITY

NSCG will be financially, culturally, structurally and environmentally sustainable. We will continue to build an efficient and effective infrastructure, prioritising, allocating and effectively measuring the impact of our resources to allow us to continue the investment required to sustain a high performing, resilient organisation.

STAKEHOLDERS

We are a college at the heart of the communities we serve. We pride ourselves on partnership working within Staffordshire, and beyond. We will nurture and develop partnerships that benefit students, make sense financially and have a positive impact on our wider community.

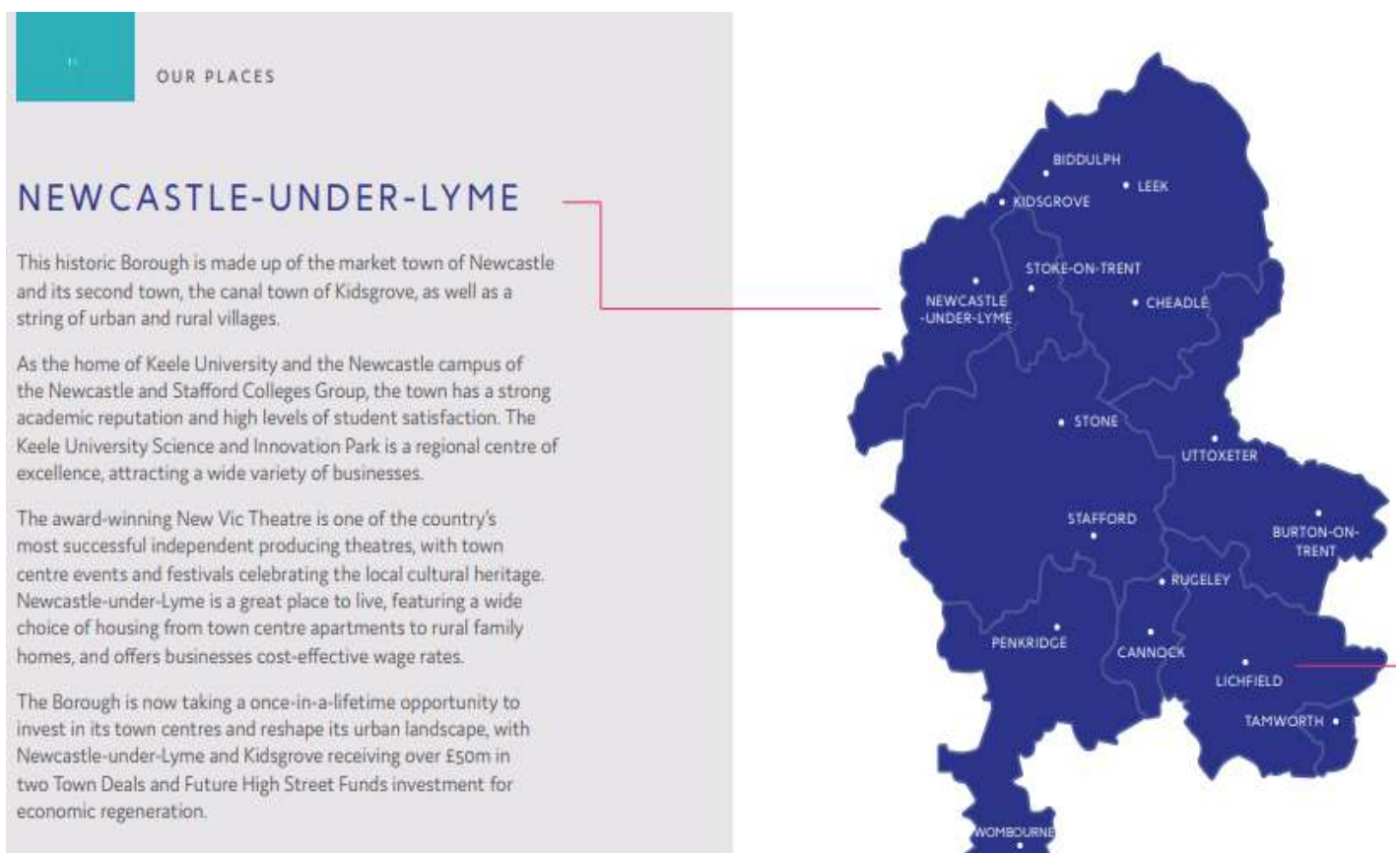
The strategic plan will be finalised and published in September 2023.

3. Context and Place

3.1 Our location

Stoke-on-Trent and Staffordshire is centrally located in the heart of the Midlands with good road, rail and air links. Home to around 40,000 businesses, ranging from small and micro enterprises to global leaders in their field, it has a strong foundation in industry including ceramics and advanced manufacturing.

Both the Newcastle and Stafford College campuses are located within the town centres, with Stafford benefitting from being on a main train line. Most of our learners live within a 3 mile distance to the College.





3.2 Economic context

The economic context of the local area that we serve is outlined below.

- In September 2022, around 569,000 people were employed in Stoke on Trent and Staffordshire; representing 79.4% of residents aged 16-64 in the area.
- Whilst employment is high, a disproportionate amount of this employment is in lower-skilled roles, impairing the productivity of local businesses. This is also linked to relatively lower skills levels than nationally. Young People's attainment at school is behind the national average, particularly for Stoke on Trent. Progress from GCSE education shows a varied and challenging picture with the proportion of young people that are NEET and NEET not known at 5.1% in Staffordshire and 14.1% in Stoke in Trent compared to 7.3% in England.
- Over the past five years, Stoke on Trent and Staffordshire's employment rate has increased and continues to operate above the national and West Midlands average.
- However, across the region, there is a slight variance in the employment rate by local authority. Staffordshire presents an employment rate of 80.3% compared to Stoke on Trent where the rate is 76.6%.
- Stoke on Trent and Staffordshire has a large business base with many education and training providers working together to support the area. For example, Staffordshire Partnership for Employment & Skills (SPES), a partnership of 3 Universities, 5 Colleges (including Newcastle and Stafford Colleges Group), over 30 Independent Training Providers (ITPs) and Staffordshire Chamber of Commerce, the Stoke on Trent & Staffordshire Institute of Technology for which Newcastle and Stafford Colleges group is the lead.
- The College is collaborating with 5 other Colleges in Staffordshire as part of the Strategic Development Fund (DfE funding across the Staffordshire Colleges of £2.5m) to strengthen the capacity of FE colleges in the region to deliver high quality engineering / automotive, manufacturing and digital skills and to improve collaborative working between FE colleges and employers.

- The College also has further specialist centres such as our Science and Technology Centre (Newcastle), Performing Arts Centre (Newcastle) and Skills and Innovation Centre (Stafford).
- The Stoke on Trent and Staffordshire region comprises 40,190 businesses, which 16.7% are within Stoke on Trent, 13.2% in Stafford, 12.2% are in East Staffordshire, 12.1% are in Lichfield, 10.8% are in South Staffordshire, 10.1% are in Staffordshire Moorlands, 9.7% are in Cannock Chase, 9.1% are in Newcastle under Lyme and the remaining 5.6% are in Tamworth.
- Stoke on Trent and Staffordshire has shown a 2.6% growth in the number of businesses from 2019 – higher than national levels (2%), namely in the sectors of transport and storage (25%) and construction (6%).

Leaders locally wish to ensure that residents have access to the relevant support and provisions to develop entrepreneurial and innovation skills that support greater local enterprise.

Leaders also identify that Staffordshire is resilient with support in place for residents and workers to deal with change, and access support and training, when they need it. This includes ensuring that those people most adversely affected by economic shocks such as Brexit, the pandemic and the energy/cost of living crisis are front and centre of plans. Transferable skills are seen as being at the heart of this, especially for those leaving rapidly shifting sectors such as retail and hospitality.

Given the speed with which the economy is now changing, Staffordshire leaders recognise the need to develop a stronger culture of life-long learning in Staffordshire to ensure that all residents can continue to benefit from continued economic growth and the better paid jobs being created.

There will be a need to consider models of delivery, with support being required for businesses to be instrumental in crafting new courses offered in more flexible formats where possible.

Such skills and strength in the workforce are envisioned to be able to support the economic strategy and vision for the area alongside ongoing and future ambitious projects that are aligned to these aims.

4. Contribution to national, regional, and local priorities

4.1 Development of our curriculum

The College has a strong reputation for curriculum design, implementation and innovation. It has introduced new courses in many areas of the curriculum and is constantly reviewing and updating the breadth and appropriateness of its provision in order to meet the needs of the students, the local and regional community and the wider national education and workforce agendas. A particular strength is preparing students for the next stage in their lives through strong progression on to higher level courses, Higher Education, Apprenticeships and into employment.

The major curriculum developments over the last 12 months have included:-

- Continued collaboration with employers and universities to increase their input into curriculum design and delivery including: for work placements (T Levels and BTECs); increased apprenticeship recruitment; employer review/development of course content and delivery; involvement in providing relevant information, advice and guidance such as at our Next Steps Fayre.

- Further expansion and improvements in apprenticeships including the introduction of new programmes in priority skills areas including digital (software and hardware) and engineering and manufacturing.
- Consolidation of our existing Higher Education provision to focus on delivering HNC/HND qualifications directly.
- The introduction of the new HTQ qualification in Digital, and T levels in high priority areas in 2022/23 (engineering, health & digital).
- Introduction of a new fast track Health Access programme that includes some additional modules in line with local and national priorities.
- Continuing support of the existing collaborative arrangements between Higher Education institutions, colleges, private training providers and local schools to broaden curriculum choice and to improve participation, achievement and progression.
- Leading the development of local collaborative partnerships to better coordinate a coherent skills offer including the Strategic Development Fund which enabled all Staffordshire colleges to invest in STEM-related curriculum resources and work together to develop and share curriculum content.
- Expansion of the STEM and introduction of environmental science to include more higher-level qualifications in preparation for the forthcoming Stoke-on-Trent and Staffordshire Institute of Technology.
- A focus on further strengthening maths delivery to utilise innovation delivery methods and delivering a successful first year of the Multiply maths programme.
- Commitment to lead on the Centre for Excellence in Maths.

4.2 Priorities for 2023/24

In the academic year 2023 to 2024, NSCG will prioritise the following aims:-

- Grow and extend the scope of provision in engineering and manufacturing at technical levels three and four (local, regional).
- Grow and extend the scope of provision in health and social care at technical levels three and four (local, national).
- Introduce new provision in technical construction at level three (local, national).
- Develop and introduce in 2023/4 and 2024/5 and provision at levels four and five in: healthcare (local, national); management (local); early years (local, national); engineering and manufacturing (local, national); and accounting (local).
- Develop the Stoke-on-Trent and Staffordshire Institute of Technology in collaboration with Keele University, BSDC, Axia Solutions and other local providers, to open in September 2024 and deliver advanced and higher-level programmes in local/national priority subject areas.
- Continue to underpin the L2 qualification with a set of key principles that will help prepare and support students for transition to higher level study / technical education. This includes enhanced work experience/interaction with employers, a holistic and integrated approach to developing core knowledge, skills and behaviours. In addition, the development of a stronger focus on industry relevant technical knowledge and greater time spent on the development of knowledge and skills in English and Maths by inclusion of contextualised delivery sessions.
- Further increase the focus of intermediate-level apprenticeship provision onto providing pathways into skilled work for young people, including in local priority areas.
- Extend advanced-level apprenticeship provision including increasing provision in the following priority sectors, particularly for young people; digital & computing; engineering & manufacturing (mechatronics, maintenance and manufacturing systems); health.

- Prepare to extend these programmes and to introduce in 2024 technical construction (inc. design, surveying and site management).
- Increase the number of apprentices undertaking higher-level apprenticeships in: engineering, digital & computing; adult social care; accounting & finance; management. To work with other established providers to ensure progression into higher apprenticeship programmes in health professions.

4.3 Staffordshire Employment and Skills Strategy

Staffordshire leaders have developed an Employment and Skills strategy that will be used to inform the development of the LSIP, enable the effective communication of Staffordshire's shared employment and skills goals, guide future employment and skills programmes and support external funding bids. The proposed vision for the strategy is:-

“To help deliver a diverse, inclusive and sustainable economy across Staffordshire, developing local skills which enable more people to access higher value, better paid jobs across a wide range of priority and locally important sectors.”

The mission for local employment and skills stakeholders is to:-

“Create strong and effective partnerships which support our people to gain the knowledge, skills and confidence to achieve their ambitions and play a productive role in the growth of the Staffordshire economy.”

It is anticipated that through the strong Colleges, independent training providers and Universities in the region, there will be an increase in the support of higher level technical skills and the development of new skills needed by businesses within priority sectors, with a particular focus on cross cutting digital skills development through new state-of-the-art provision and green skills vital for the country's net zero ambitions. The needs of business will be at the heart of transformation and key to this will be seeking to forge new and lasting partnerships. NSCG's IOT will be central to this, with business and education providers increasingly working together to deliver the technical training needed in Staffordshire to provide the future skills for growth.

The shared ambition of the Local Authorities of Staffordshire is for people to benefit from more and better paid jobs in one of the UK's primary locations for sustainable green growth and investment. The creation of places we can all be proud of, driven by innovation and new technologies.

The ten year priorities for employment and skills in Staffordshire have been identified as:-

- Building on recent employment and skills improvement and success.
- A united vision and mission for further employment and skills improvement.

Priority 1: Creating an Aspirational and Active Workforce – Work across our communities to provide employment and skills support to ensure all can access work and be productive, creating a more inclusive local economy with reduced labour shortages, increased economic activity and greater transition to work.

Priority 2: Providing Inspirational Careers Advice - Continue to develop inspirational Careers Education, Information, Advice and Guidance (CEIAG) to ensure that all residents have access to the information and advice they need to make informed career choices and have a productive and prosperous career.

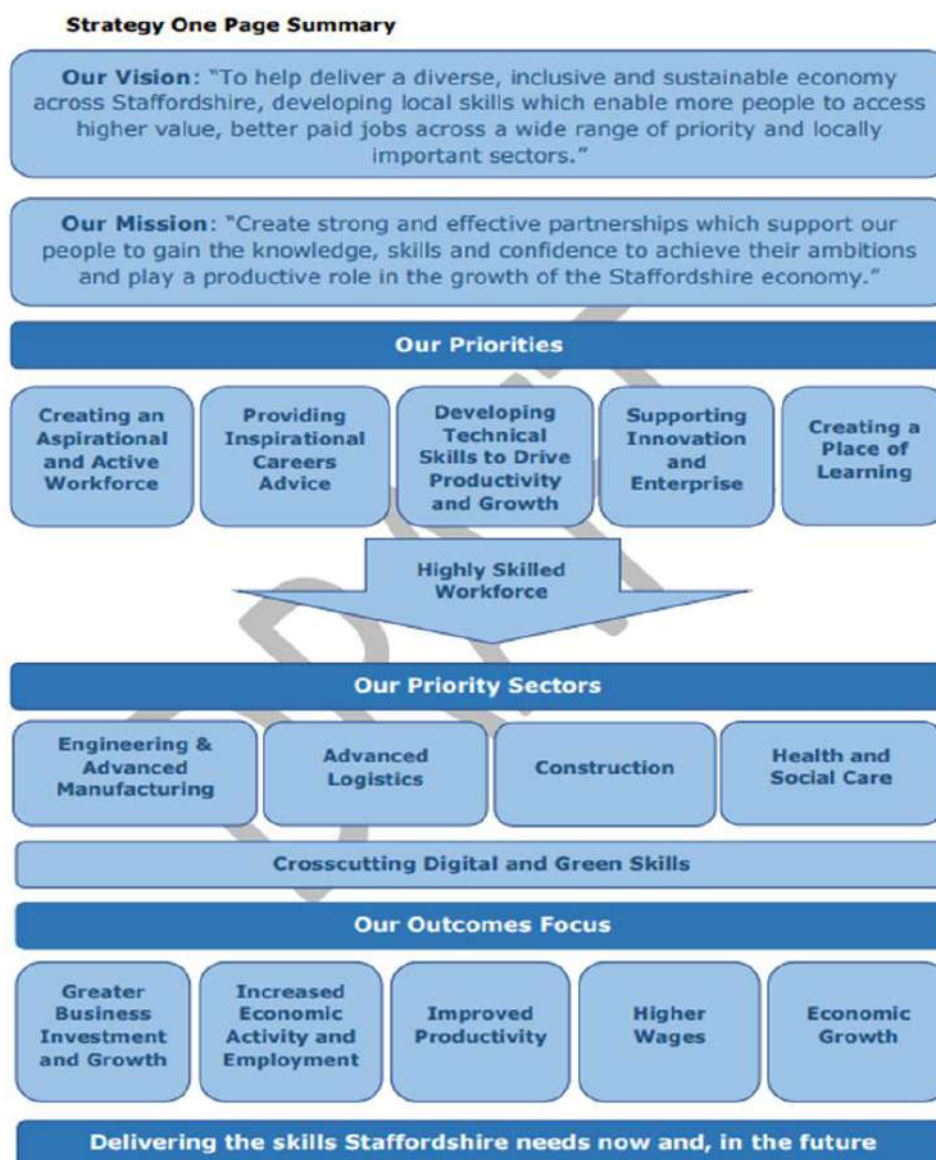
Priority 3: Developing Technical Skills to Drive Productivity and Growth – Create a flexible Staffordshire-wide skills system that responds to local business needs now and in the future, particularly in priority growth sectors which increases productivity and economic growth through technical skills development (including apprenticeships, T- Levels) e.g.

- Engineering & Advanced Manufacturing (Automation/AI/Machine Learning)
- Construction including Modern Methods (Automation/AI/Retrofitting)
- Advanced Logistics (Automation/AI)
- Health and Social Care (Digitisation of Services/New Technologies).

Priority 4: Supporting Innovation and Enterprise – Support entrepreneurial, enterprise and innovation skills that enable more residents to start-up and grow their own business.

Priority 5: Creating a Place of Learning - Embed the culture of life-long learning into the local labour force to support upskilling & retraining and progression to higher value, skilled and paid jobs.

This vision is pictorially represented below.



5.0 Stoke on Trent and Staffordshire Local Skills Improvement Plan (LSIP)

5.1 LSIP Overview

The College collaborates closely with Staffordshire Chambers of Commerce and other key partners within the Stoke on Trent and Staffordshire area to design and deliver the Local Skills Improvement Plan (LSIP). The LSIP is important to the College in relation to the implementation and delivery of a plan that ensures a greater emphasis on meeting local skills needs.

Local Skills Improvement Plans (LSIPs) are led by Employer Representative Bodies (ERB) and featured in DfE's "Skills for Jobs" White Paper with the aim to put employers more firmly at the heart of the skills system.

Staffordshire Chamber of Commerce & Industry has been appointed the ERB for Stoke-on-Trent & Staffordshire.

The LSIP is centred around setting out key priorities and changes needed in the local area to make post-16 technical education or training more responsive and closely aligned to local labour market needs.

The LSIP will set out key priorities and changes needed for the local area to make post-16 technical education or training more responsive and closely aligned to local labour market needs, but not attempt to cover the entirety of provision within an area.

It should focus on the key changes and priorities that can gain traction and maximise impact with an agreed set of actionable priorities that employers, providers and stakeholders in a local area can get behind to drive change. Agreed priorities will be informed by evidence of unmet and future skills needs and meaningful engagement between employers and providers.

It should describe how skills, capabilities and expertise required in relation to jobs that directly contribute to or indirectly support Net Zero targets, adaptation to Climate Change or meet other environmental goals have been considered.

In developing the LSIP, Staffordshire Chambers of Commerce have undertaken a range of research.

Primary research has included: one-to-one discussions with employers; employer forums hosted by specialist facilitators; deep dive discussion groups in priority sectors; partnering with other local ERB organisations; college/independent training providers; an online employer survey.

The current draft report indicates that around 250 businesses (predominantly Chamber members) have been consulted to date, with greater involvement in engineering & manufacturing, health & social care and professional & technical services.

5.2 LSIP Areas of focus

The LSIP for Stoke-on-Trent and Staffordshire is currently still in development, with further work underway to ensure full coverage before final publication. The LSIP is centred around setting out key priorities and changes needed in the local area to make post-16 technical education or training more responsive and closely aligned to local labour market needs. The LSIP draft plan published for review by partner organisations

has identified the following priority sectors as key priority areas for the Stoke on Trent and Staffordshire region:-

- Engineering and advanced manufacturing, including ceramics
- Advanced Logistics
- Low carbon and energy distribution
- Health and Social care

There will also be cross cutting themes that will be looked at across all industries and sectors highlighted as:

- New and emerging digital skills
- Skills for new technology adoption including AI
- Automation and machine learning
- Requirement for new skills and roles to support the development of the Green Economy

The LSIP has identified draft priorities for the local skills system. Partners will be exploring with the College potential activity that the College could undertake as part of these priorities. This activity centres around:-

- Ensuring a better match between the demand for, and supply of, skills employers most need to thrive and boost Stoke on Trent and Staffordshire's productivity.
- Help drive greater collaboration between providers, businesses and public sector stakeholders to deliver a more responsive skills system in Stoke on Trent and Staffordshire.
- Increase awareness and accessibility of provision and addressing barriers to progression, especially for the adult workforce.
- Recognise that improving the supply of skills must be accompanied by demand-side measures that drive greater employer engagement.
- Support individuals in Stoke on Trent and Staffordshire through enhanced careers guidance to gain the best skills to realise their aspirations and potential.

Employers have been asked what types of skills their workforces would need over the next 3-5 years with the results being:-

- IT & Digital skills – 56%
- Employment skills (employability skills, transferrable skills, communication, attitude, body language) – 52%
- Sector specific technical skills – 44%
- Good careers information, advice and guidance for potential staff so they understand your business/sector – 32%
- Green/low carbon technologies – 26%
- English & Maths – 22%
- Automation and robotic operation skills – 12%
- Sector specific technical skills – 44%

The barriers to upskilling their respective workforces have been identified as time available to undertake the training, cost of training and location of training. Over a third of businesses stated that there were no barriers to upskilling their respective workforces.

Through the research undertaken a range of specific skills/role requirements has also been raised by employers as outlined below.

Engineering and Advanced Manufacturing, including ceramics

The region has a strong history of advanced manufacturing and engineering across numerous sub sectors including a world leading ceramics cluster, machinery & automotive manufacturers and food manufacturing specialisms. In total, the sector accounts for over 12% of jobs locally, above the national and regional average, and 14% of GVA, second only to the wholesale and retail sector. In the area, there is a high demand (over 1000 vacancies) for occupations including:-

<ul style="list-style-type: none">• Metal working production and maintenance.• Vehicle technicians, mechanics, and electricians.• IT analysts.• Architects and systems designers.• Design and development engineers.	<ul style="list-style-type: none">• Welding trades.• Mechanical engineers and engineering technicians.• Electrical and electronic trades.• Engineering technicians.
--	--

Advanced Logistics

The emergence of new technologies and ways of working such as automation and AI are changing the shape of the industry and providing new opportunities for growth in advanced logistics through enhanced productivity and efficiency. This represents growth opportunity both nationally and for Stoke on Trent and Staffordshire particularly due to their central location with strong connectivity, access to land and premises to support growth. Labour market data indicates a high demand for certain occupations including:-

<ul style="list-style-type: none">• Elementary storage occupations.• Van drivers.• Large goods vehicle drivers.• Managers and directors in storage and warehousing.• Transport and distribution clerks and assistants.• Fork-life truck drivers.	<ul style="list-style-type: none">• Purchasing managers and directors.• Managers and directors in transport and distribution.• Postal workers, mail sorters, messengers, and couriers.• Rail transport operatives.• Other drivers and transport operatives.• Importers and exporters.• Air Transport Operatives.
---	--

Low carbon and energy distribution

<ul style="list-style-type: none">• EV charging point installers.• EV mechanics.• Low carbon heating technicians.• Hydrogen heating engineers.	<ul style="list-style-type: none">• Building Services Engineers.• Plumbing and Domestic Heating technicians / engineers.• Motor Vehicle maintenance technicians / engineers.
---	--

Health and Social Care

The Health and Social care sector in the region consists of approximately 1,400 businesses, over 64,000 employees and contributes approximately £2.3bn per annum to the area in GVA. Labour market data across the region demonstrates high demand for certain occupations including:-

<ul style="list-style-type: none">• Nurses.• Care workers and home carers.• Teaching Assistants.• Nursing auxiliaries and assistants.• Residential, day and domiciliary care managers and proprietors.• Medical practitioners.• Educational support assistants.• Youth and community workers.• Senior care workers.	<ul style="list-style-type: none">• Nursery nurses and assistants.• Occupational therapists.• Psychologists.• Health services and public health managers and directors.• Physiotherapists.• Pharmaceutical technicians.
---	--

The College will continue to contribute to the LSIP by collaborating with partners to identify skills gaps and how the College provision can support these to engage with learners across the region.

5.3 Stoke-on-Trent and Staffordshire Local Enterprise Partnership (SSLEP) Skills Advisory Panel (SAP)

Before LSIPs are rolled out across the country, it is the DfE's intention that Skills Advisory Panels and the Local Skills Report should continue to influence the behaviour of local partners and feed intelligence to central government, including to sectoral focussed skills teams and the national-level Skills and Productivity Board. The SAP is a partnership between employers, educators, providers, local authorities and the voluntary sector. The SAP brings together local employers and skills providers to pool knowledge on skills and labour market needs, and to work together to understand and address key local challenges.

The Stoke-on-Trent & Staffordshire SAP Board is responsible for securing delivery of the SAP Skills Strategy and its programme of activities and investments.

The SAP's aim is to secure influences on resources and agencies for delivering its skills priorities, acting as a strategic commissioner of skills provision, on behalf of the Stoke-on-Trent & Staffordshire Local Enterprise Partnership (LEP).

The SAP has identified through its local Skills report, key priority sectors including:

- New and emerging Digital skills
- Roles in the Green Economy/Low Carbon/Net Zero
- Skills for new technology adoption including AI/Automation/Machine learning in our priority and locally important sectors including:-

- Engineering and Advanced Manufacturing
- Construction of housing including Modern Methods of Construction and Infrastructure e.g. HS2/West Midlands Freight Interchange
- Advanced Logistics
- Health and Social Care

The SAP has received a grant for 2022/23 and has a role to deliver 2 objectives to support the development of the LSIP.

- Objective 1: Produce and make available robust analysis of skills needs and the local labour market.
- Objective 2: Work collaboratively with the ERB in the development of an LSIP for the area

6.0 Approach to developing the Annual Accountability statement

The priorities of the Local Skills Improvement Plan are currently being discussed by stakeholders. The strategic plan for the College under the leadership of its Principal is also under development. It is therefore expected that there will be an update to the Accountability Agreement for the 31st July 2023 submission.

The College, as part of the LSIP, has consulted with the following key stakeholders to inform our plan:

- Over 800 existing partner employers covering all areas of our provision
- Stoke-on-Trent and Staffordshire Local Enterprise Partnership
- Principals from all FE colleges in Stoke-on-Trent and Staffordshire
- Staffordshire Partnership for Employment and Skills
- Stoke-on-Trent and Staffordshire Skills Advisory Panel
- Staffordshire Chambers of Commerce
- Stoke-on-Trent City Council
- Staffordshire County Council
- Stafford Borough Council
- Newcastle-under-Lyme Borough Council
- NHS

How we work with other local providers to meet skills needs:

- Stoke-on-Trent and Staffordshire colleges – the Principals from all local colleges meet regularly to discuss local priorities and agree plans to work together to tackle them. For example, NSCG led the Strategic Development Fund project with all the other local colleges (Stoke-on-Trent College, Burton & South Derbyshire College, South Staffordshire College, City of Stoke-on-Trent Sixth Form College, Buxton & Leek College). This led to over £2M investment in specialist resources in priority sectors including: advanced manufacturing; electric, hybrid and hydrogen vehicle technology; digital including augmented and virtual reality; and other STEM specialisms. It also led to substantial collaborative work to develop resources in the above and other areas for use by all partners. As a result, residents of the area are now benefiting from updated skills provision, equipping them to support their current and future employers to be competitive with these new technologies.
- Staffordshire Partnership for Employment and Skills (SPES) – representatives of all local colleges, independent training providers and universities meet regularly to review local and national skills priorities and develop provision that addresses these.

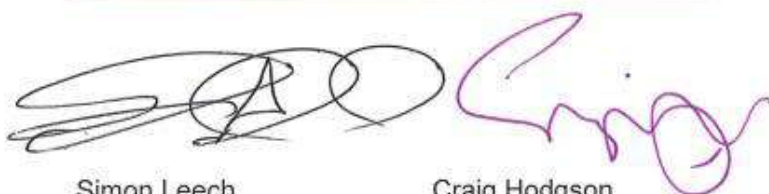
- Stoke-on-Trent and Staffordshire Institute of Technology – as described above, NSCG is the lead partner in the forthcoming Institute of Technology. As such, we are working closely with our core education partners to shape a higher-level, technical provision that meets current needs and will develop a local talent pool to support higher value-added businesses in the future: Burton & South Staffordshire College; Axia Solutions; Keele University. Further discussions are underway to explore opportunities to bring other Staffordshire and Stoke-on-Trent colleges into the IoT. As a result of this work, new higher-level technical provision in local skills priority areas will be put in place, with over 1500 learners a year benefiting from these new programmes by the end of the decade.

7.0 Corporation Statement

On behalf of Newcastle and Stafford Colleges Group, it is hereby confirmed that the college plan as set out above reflects an agreed statement of purpose, aims and objectives as approved by the Corporation at their meeting on 13th July 2023.

The plan will be published on the college's website within three months of the start of the new academic year and can be accessed from the following link:-

<https://nscg.ac.uk/about-us/management-governance>



Simon Leech

Chair of Corporation

Craig Hodgson

Principal/Chief Executive and Accounting Officer

Dated: 13th July 2023

8.0 Reference to relevant supporting documentation

<https://nscg.ac.uk/>

[Our vision - We Are Staffordshire](#)

[About Us - StokeStaffsLEP](#)

<https://www.nomisweb.co.uk/reports/lmp/lep/1925185562/report.aspx?town=stoke%20on%20trent#tabquals>