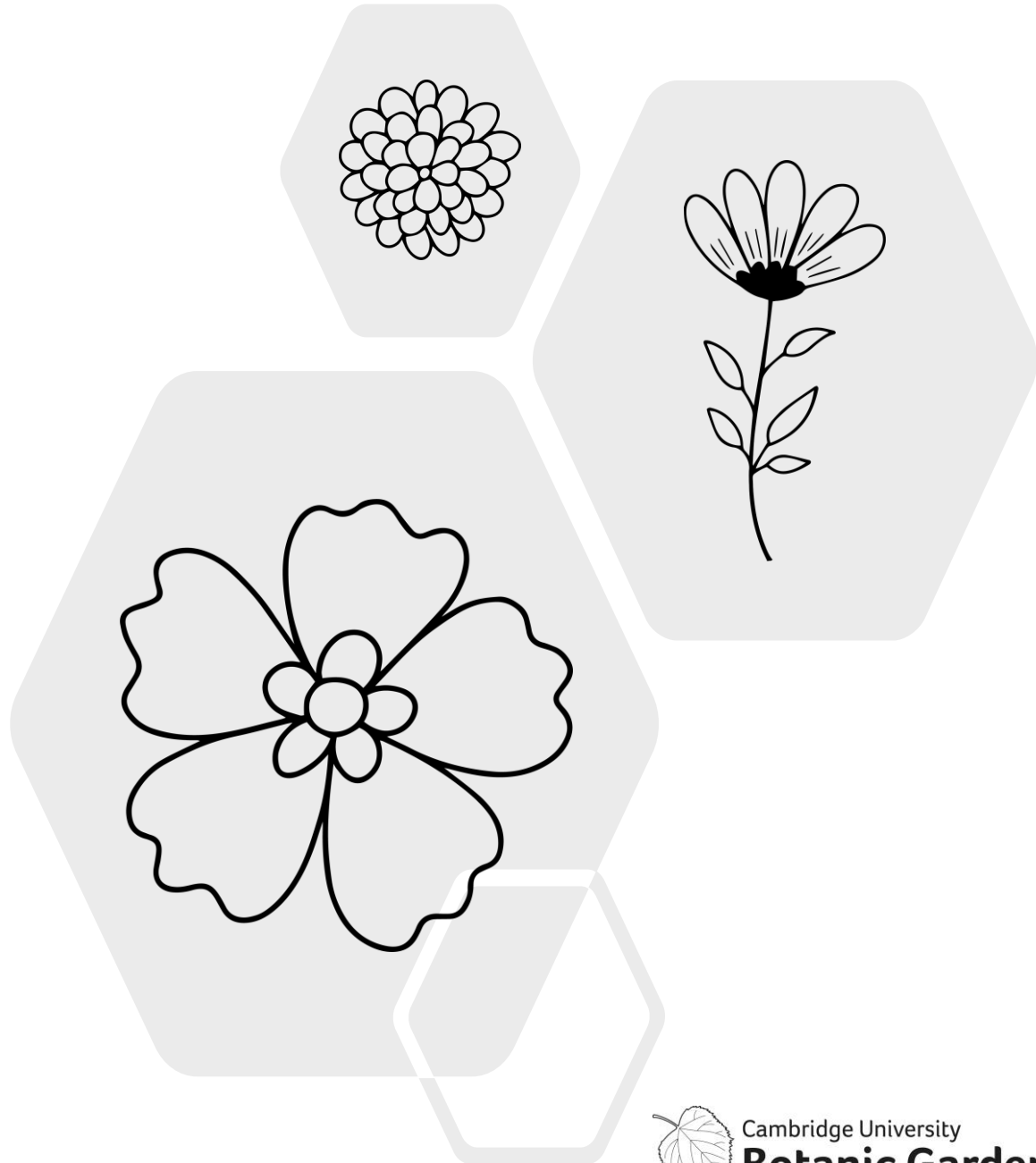


Wildflower Bingo

How to play:

- Print off these sheets (bingo boards and plant cards) and cut out the plant cards. You could stick them to cardboard if you want them to last longer.
- You will need at least 3 people to play the game. 1 person is the bingo caller. The other people are the players. There can be up to 6 players. Each player has a bingo board. Players can play with more than 1 board if there are spare. The aim of the game is for each player to collect all the plant cards on their board(s).
- The bingo caller places all the individual plant cards in a bag so that nobody can see them.
- Without looking, the bingo caller pulls out 1 plant card at a time and shows it to all the players.
- If the plant card matches one of the pictures on a player's board, that player can claim the card by calling out the name of the plant.
- If more than one player wants the card, it is the player who says the plant name first who claims it.
- Claimed cards are placed upside-down over the pictures on the boards. Once a player has covered a picture they no longer have to collect that card.
- The winner is the first person to collect all their plant cards.





Cowslip



Scabious



Foxglove



Yarrow



Woody Nightshade



Great Mullein



Tuberous Comfrey



Speedwell



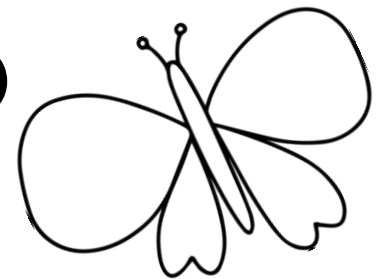
White Deadnettle



Ground Ivy



Wildflower Bingo Board 1





Forget-me-not



Bee Orchid



Large Bindweed



Selfheal



Greater Knapweed



Foxglove



Kidney Vetch



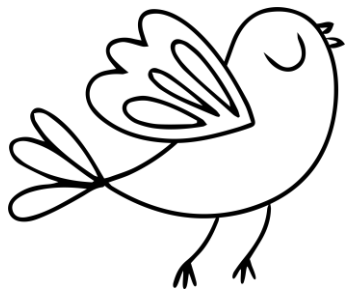
Ribwort Plantain



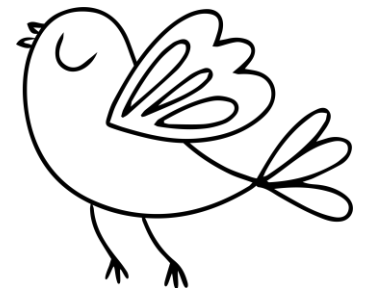
Yellow Flag Iris



Cleavers



Wildflower Bingo Board 2





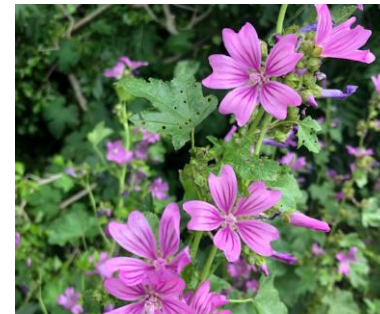
Common Poppy



Forget-me-not



White Stonecrop



Common Mallow



Large Bindweed



White Bryony



Wild Teasel



Woody Nightshade



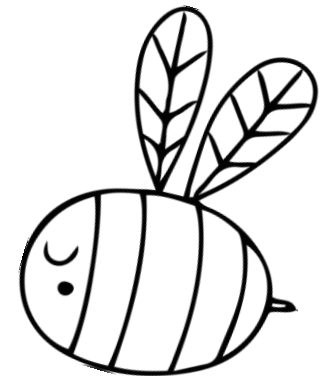
Daisy



Large Thyme



Wildflower Bingo Board 3





Bluebell



Lords-and-ladies



Coltsfoot



White Dead-nettle



Yellow Archangel



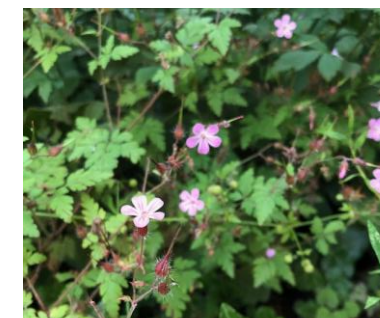
White Clover



Violet



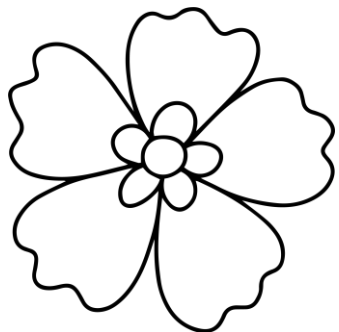
Greater Knapweed



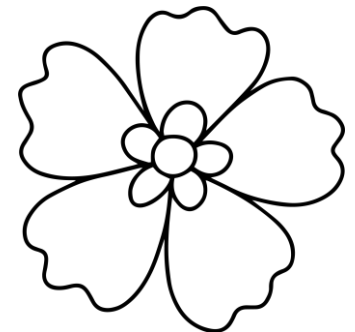
Herb Robert



Pineapple-weed



Wildflower Bingo Board 4





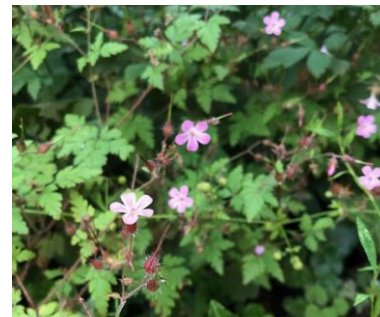
Bee Orchid



Common Poppy



Ground Ivy



Herb Robert



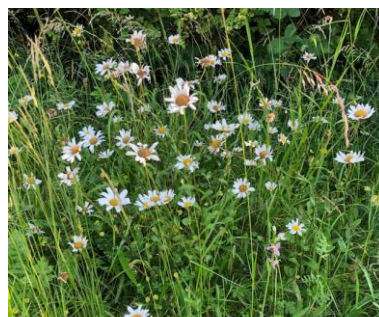
Creeping Thistle



White Stonecrop



Lords-and-ladies



Ox-eye Daisy



Field Bindweed



Lesser Trefoil



Wildflower Bingo Board 5





Cowslip



Green Alkanet



Lady's Bedstraw



Pineapple-weed



Selfheal



Violet



Scabious



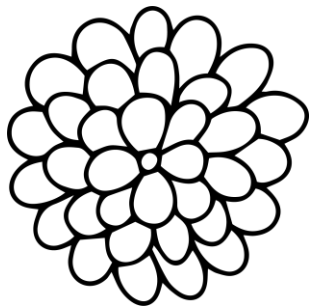
White Campion



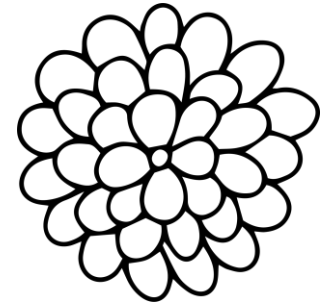
Toadflax



Common Mallow



Wildflower Bingo Board 6



Plant Cards – print and cut out



Cowslip



Scabious



Foxglove



Yarrow



Woody Nightshade



Great Mullein



Tuberous Comfrey



Speedwell



White Deadnettle



Ground Ivy



Forget-me-not



Bee Orchid



Large Bindweed



Selfheal



Greater Knapweed

Plant Cards – print and cut out



Foxglove



Kidney Vetch



Ribwort Plantain



Yellow Flag Iris



Cleavers



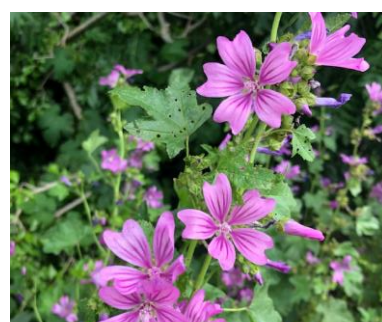
Common Poppy



Forget-me-not



White Stonecrop



Common Mallow



Large Bindweed



White Bryony



Wild Teasel



Woody Nightshade



Daisy



Large Thyme

Plant Cards – print and cut out



Bluebell



Lords-and-ladies



Coltsfoot



White Dead-nettle



Yellow Archangel



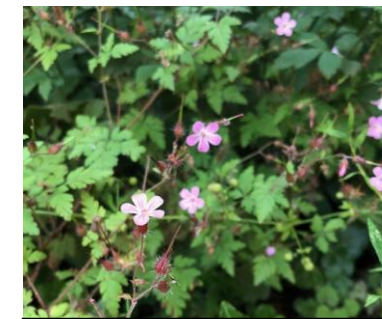
White Clover



Violet



Greater Knapweed



Herb Robert



Pineapple-weed



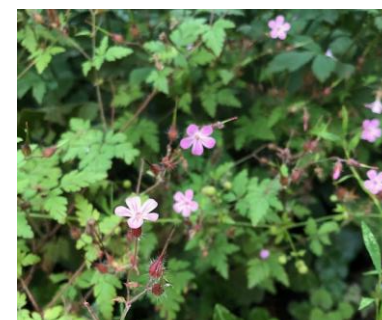
Bee Orchid



Common Poppy



Ground Ivy



Herb Robert



Creeping Thistle

Plant Cards – print and cut out



White Stonecrop



Lords-and-ladies



Ox-eye Daisy



Field Bindweed



Lesser Trefoil



Cowslip



Green Alkanet



Lady's Bedstraw



Pineapple-weed



Selfheal



Violet



Scabious



White Campion



Toadflax



Common Mallow