



cpmg

ARCHITECTURE & INTERIOR DESIGN  
*People. Purpose. Place.*

[www.cpmg-architects.com](http://www.cpmg-architects.com)



CPMG ARCHITECTS

## **Our architecture is a considered blend of beauty, practicality & meaning**

Our philosophy is to design buildings that not only meet clients' needs but also create delightful spaces. Over the past 30 years, we've produced award-winning buildings that have exceeded clients' expectations, time and time again.

PEOPLE. PURPOSE. PLACE

# CPMG is an award-winning firm providing services in architecture & interior design.

Since 1997 we have been growing our reputation for designing award winning buildings and spaces that meet our clients' needs and that are also delightful places to be, we continue to grow and we have no intention of stopping.



We are designing buildings across the UK and around the world, focusing our designs around human needs: supporting growing communities, building homes and workplaces, producing sustainable solutions, harnessing new technologies, educating young people, and cultivating health and well-being.





WHO WE ARE

# **We're approachable, innovative and creative people.**

We believe in designing places that not only meet our clients' needs but also creating spaces where people want to be.

**Our vision is to design places that feel better.**





WHAT WE BELIEVE IN

## Our values and philosophy

Our core values focus on people, purpose and place. We aim to create buildings and spaces that not only have a beautiful and inviting exterior, but also a thoughtfully designed interior that works.

*People.*

*Purpose.*

*Place.*



## Our Team



## People

You, your people and your brief are completely unique.

We start each project by getting to know you, the people around you, your aspirations, and the people for whom the building is designed in order to establish the functional brief for the building, both inside and out.



## Purpose

We want to understand what you do and how you do it, your purpose. We can then create something that works for your needs now and in the future.

## Place

To understand your needs we will evaluate your surroundings, together we will find ways to exploit the opportunities in the project to the full, building something meaningful and long lasting.

# Carbon Reduction at CPMG



Delivery of the UK's first commercial PassivHaus building



Designer of DfE's Lifetime Zero Carbon Sustainability Pathfinder at Maritime Academy



Certified PassivHaus Designers



Delivery of Lifetime Zero Carbon Forest School Nursery at University of Staffordshire

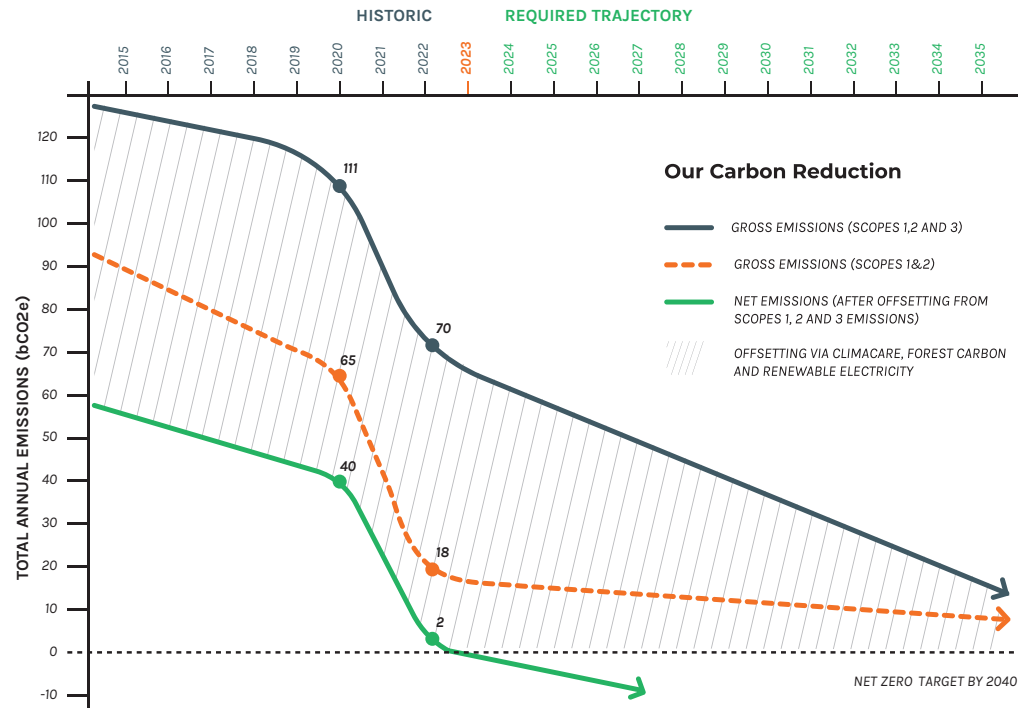


**BREEAM  
Excellent**

Delivery of 22no. BREEAM Excellent buildings



Signatories to the RIBA 2030 Challenge and the SME Climate Hub

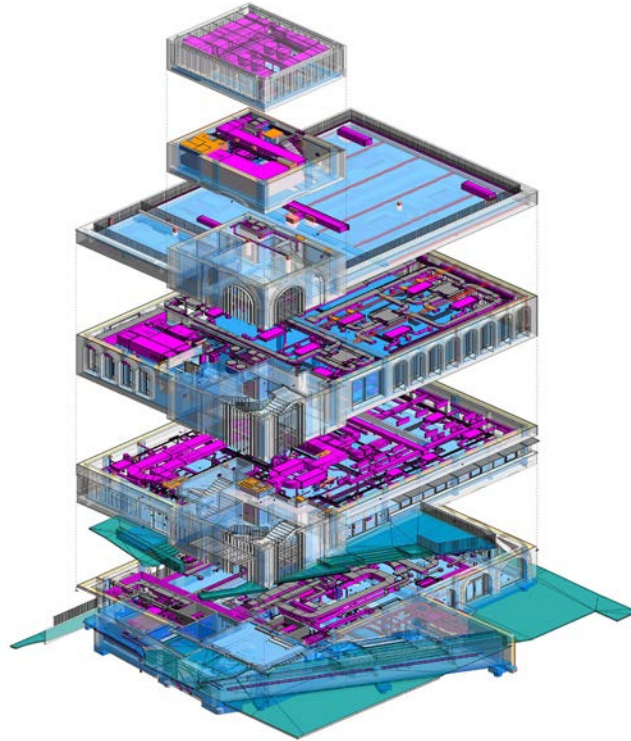




THE FUTURE OF ARCHITECTURE

# BIM (Building Information Modelling) at CPMG

We are award winning innovators in Revit, and have written bespoke software on behalf of clients to enhance its innate capabilities and apply it to a particular construction sector. Our deep understanding of the software allows us to utilise it across our entire process.



Our expertise in BIM has enabled us to develop a clear and coherent approach and to demonstrate the benefits it brings to a project. We are certified by the British Standards Institution to provide architectural, interior design and visualisation services as Lead Appointed Party and Appointed Party in accordance with BS EN ISO 19650-2:2018.





WORKPLACE CONSULTANCY

# Our [work]place consultancy starts by getting to know you.

We get to know you, your organisation, how you operate, the space you operate in and how all these elements influence your functional brief. We will develop the design and with our integrated team to ensure that your space is a place where people achieve their best.



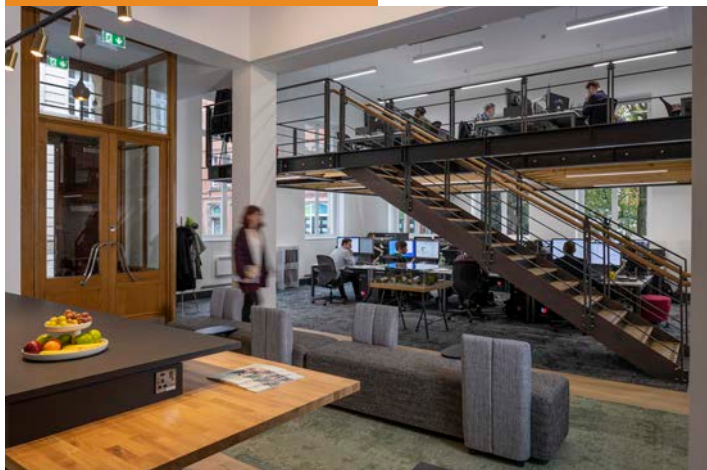
Our [work]place consultancy can help with goals for wellbeing and productivity (the rate of output per unit of input).

They rely on much more than an efficient working environment; they rely on motivation too. It's imperative that we put people first: it's all about you and the three aspects of your life at work which contribute to wellbeing, motivation and so, productivity.

ARCHITECTURE

## CPMG Headquarters 13 St. Peter's Gate, Nottingham

In April 2021 we saw the opportunity to move to a new model of working in a different building that would better support our aspirations.



**BCO** REGIONAL  
WINNER  
2022  
Awards



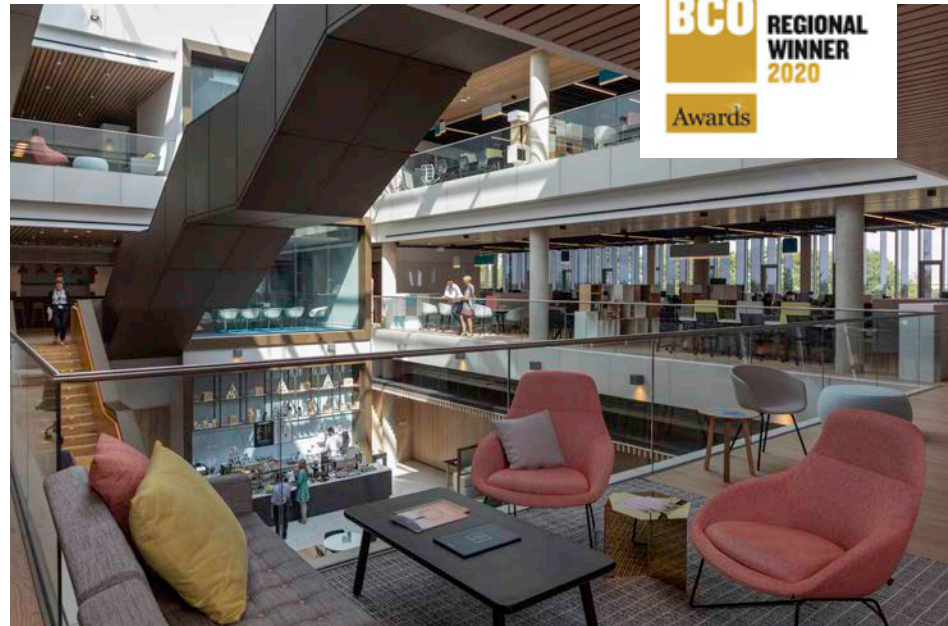
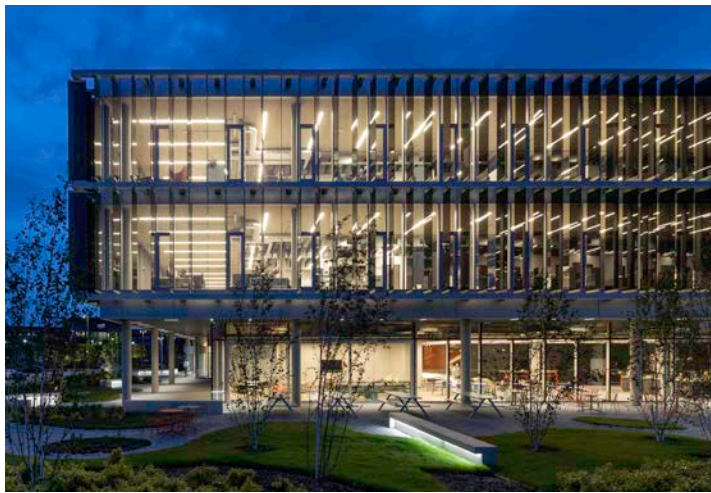
It's high ceilings, generous glazing and large volume permitted the introduction of a mezzanine where the design studio and informal meeting space is located. Our team is, at last, connected: they are all together, whether technical, finance, administrative or support.



ARCHITECTURE

## British Sugar, Peterborough

Providing space for 300 employees, the building includes various types of meeting spaces and collaborative working areas all grouped around a focal atrium space.



ARCHITECTURE

## Elizabeth Garrett Anderson Building, NSP

Located adjacent to the University of Nottingham, the science park contains a series of office buildings. CPMG developed the final phase of the park, a 35,000sqft office building. In addition to office space the building contains a focal café and conferencing hub for the park. There is an undercroft parking for 80 cars.





ARCHITECTURE

## Alcatel-Lucent, Greenwich

Refurbishment and extension transforming the quality of the production, clean room and office spaces and adds a new reception and café area.







ARCHITECTURE

## Rushcliffe Arena, Nottingham

A new combined local government headquarters and leisure facility located in the heart of the West Bridgford community.



ARCHITECTURE

## Ten Traffic Street, Nottingham

A large student residential development providing 522no bedrooms and studios, located on a main arterial route into the city and close to the railway station.





ARCHITECTURE

## Pelham Waterside, Nottingham

A brand new residential community which has been built near the banks of the River Trent, close to Nottingham City Centre and within the Waterside Regeneration Zone.



ARCHITECTURE

## The Nest, Leicester

A prestigious, contemporary six storey new build student facility providing high quality city living in the centre of Leicester. The scheme includes 48 beds in clusters and ten studios.



ARCHITECTURE

## Digital Transport and Logistics Academy, Boston College

The academy provides skills training for Lincolnshire's established logistics and transportation industry with a focus on digital innovation and technologies for the future.



ARCHITECTURE

## EMAT Building, Boston College

The EMAT Centre provides purpose-built accommodation for advanced technical skills training in manufacturing, engineering and technology. The centre is in 'direct response' to a skills gap within the industry and 'the UK's much publicised decline in productivity'.



ARCHITECTURE AND INTERIOR DESIGN

## Vijay Patel Building, DMU

This multi award winning building is the new home for the schools of architecture, arts, design and fashion and textiles. The project also includes contemporary and customer-focused catering facilities which are light, bright and vibrant.





ARCHITECTURE

## Agri-Informatics, Cranfield University

New research facilities will work to inform industry strategy and shape decision-making at a national and international scale.



ARCHITECTURE

## STEMLab, Loughborough University

The STEMLab acts as a new hub providing a truly student-focused learning environment boasting state-of-the-art facilities.





INTERIOR DESIGN

## Campus Library, Teesside University

The phased refurbishment of Teesside University's central library re-establishes the building as a key campus facility which has a pivotal role for every student and visitor.





INTERIOR DESIGN & ARCHITECTURE

## Portland Building, University of Nottingham

Our renovation remained sensitive to both the heritage of the original building and Michael Hopkins's 2003 extension.







ARCHITECTURE AND INTERIOR DESIGN

## Cripps Health Centre, University of Nottingham

Replacing the existing centre provides a holistic approach to primary health and dental care for the university and wider community.



ARCHITECTURE AND INTERIOR DESIGN

## Hybrid Theatres, Royal Derby Hospital

the new facility comprises of a Theatre, Control Room, Equipment room, Prep room, Scrub, circulation space and associated changing and staff facilities.



ARCHITECTURE

## Children's Emergency Department, QMC

The refurbishment and extension of the existing Childrens Emergency Department, providing two emergency resus rooms, with four resus bays, supporting emergency admissions.

ARCHITECTURE AND INTERIOR DESIGN

## Discovery Building, BioCity

The flagship facility contains flexible research space, including a mixture of laboratories, incubator units, write-up spaces and offices and additional conference and meeting facilities.



ARCHITECTURE

## BioScience Centre, The Island Quarter

A ground-breaking new bioscience facility, which forms the next phase of Nottingham's The Island Quarter development. The plans feature 250,000 sq ft of high-quality, flexible research and laboratory space.



ARCHITECTURE

## Harris Academy, Wimbledon

A 1,150 pupil school in Morden on a constrained site, this 5 storey solution includes a second floor sports hall sitting over a covered outdoor recreation space.



ARCHITECTURE

## Maritime Academy, Frinsbury

Maritime Academy is a Zero Carbon Sustainability Pilot scheme for the DfE. The building is Zero Carbon, in operation in-use and in embodied energy.







ARCHITECTURE

## Leigh Academy, Rainham

A new secondary school accommodating 1,250 students aged 11-19, in a purpose-built campus in Medway.



ARCHITECTURE

## Forest School Nursery, Stoke-on-Trent

A net-zero carbon building for Staffordshire University, which features inspirational learning spaces for young children, enhanced with digital technology and a forest school provision.

Concept design by FCB Studio





ARCHITECTURE

## CESAM, IAMP Park, Sunderland

Located on the International Advanced Manufacturing Park in Sunderland, the facility incorporates a 2 storey innovation centre with offices, classrooms, laboratories, meeting rooms, café, and event space linked to c.100,00sqft of flexible production space.

ARCHITECTURE

## Project Strata, Abu Dhabi

An Advanced Manufacturing Facility producing aerospace engine components with associated HQ offices in the UAE.



ARCHITECTURE

## Hazrat Shahjalal Airport, Dhaka, Bangladesh

The 5,000m<sup>2</sup> base building form cradles the 60m high tower which provides unobstructed views to all critical points of interest, both existing and those that will evolve as part of the wider masterplan.



ARCHITECTURE

## Air Traffic Control Facility, Birmingham Airport

Birmingham Airport wanted to create a bespoke, iconic landmark building with its own identity which would impact on the skyline. It also needed to address the need to integrate the tower fully with the base building.





ARCHITECTURE

## Colonnade + Pleasure Gardens, Sutton on Sea

Retail and leisure opportunities at the lower level and a stunning new gallery and café incorporating an observatory and terraces at the upper level. New beach huts for day and extended stays are included at esplanade level



ARCHITECTURE

## Market Rasen Leisure Centre

A new dry leisure centre in this Lincolnshire market town. The facility includes: a fitness studio, exercise studio, 4-court sports hall, café and external 3-G pitch.

ARCHITECTURE

## Canal Turn, The Island Quarter, Nottingham

The first phase of The Island Quarter development; a major mixed-use regeneration masterplan. The project provides food & beverage and events destinations in an iconic canal-side building.



ARCHITECTURE

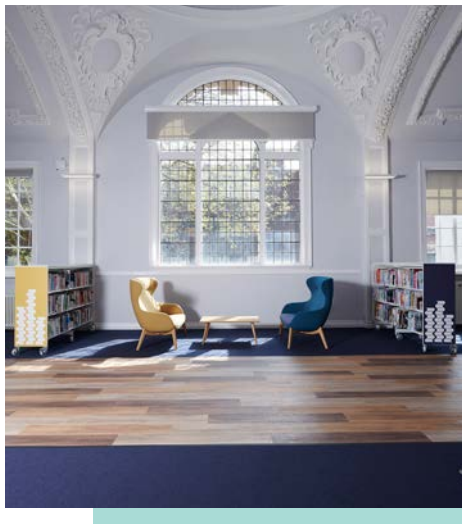
## Reception Building, Dragon Valley, China

Set between car park and lake the building provides coach and car drop off, concierge and check in facilities, bar, restaurant and staff welfare accommodation. Vehicles are left here with onward journey to the hotel, villas and spa by electric cart.

ARCHITECTURE

## HMS Belfast, London

The Imperial War Museum now has an elegant single storey glass and steel pavilion set on stilts in the Thames with a rooftop bar that is popular with office workers from the surrounding office buildings.



ARCHITECTURE

## Litchfield Street Hub, Walsall

A single leisure, cultural and learning hub, incorporating the central library, local history centre and archive collections of Walsall Council, a coffee shop and ICT lounge. The grade II listed building was remodelled and brought back to its former glory with many original features restored.



## MASTERPLANNING

# Rosegarth Square, Boston

Masterplanning proposals incorporating a new health centre with Community Diagnostic Centre, mixed residential, commercial space, a hotel and a bus station. - all connected by a new, varied public realm. The development connects the railway station with the town's market square.



## MASTERPLANNING

# Dragon Valley Resort, China

The overall masterplan covers 530 acres and will see the redevelopment of a large, former quarry site. It brings together a wide range of elements, with the construction of a hotel, reception building, hilltop villas, and clifftop bar, all centred around a blue water lake.



INTERIOR DESIGN

## BE offices, Euston

Creating an agile working environment with a blend of spaces to support productivity and wellbeing.

INTERIOR DESIGN AND BRANDING

## Kitty Cafe Leeds

Our team developed and created a new, exciting interior space, a fresh visual brand.



**NOTTINGHAM**

13 St. Peter's Gate  
Nottingham NG1 2JF

**LONDON**

31/35 Kirby Street  
London EC1N 8TE

**BIRMINGHAM**

Spaces, The Mailbox, Level 1, 3 Wharfside Street  
Birmingham B1 1RD

**HANGZHAO, CHINA**

2002 Ruijing International Building,  
No. 198 Wuxing Road, Qianjiang New District

---

**enquiries@cpmg-architects.com**

***www.cpmg-architects.com***