

**cpmg**

# **FURTHER AND HIGHER EDUCATION**

[www.cpmg-architects.com](http://www.cpmg-architects.com)



WHO WE ARE.

## CPMG is an award-winning firm providing services in architecture and interior design.

Formed in 1997 following the merger of two highly successful practices in Nottingham, we offer over 20 years of cross-sector experience and have built a reputation for designing buildings and spaces that not only meet our clients' needs but are also delightful places to be.

Working from our headquarters in Nottingham and our offices in London and China, we deliver projects across the UK and around the world.



## We're innovative, approachable and creative people.

We believe in designing places that meet our clients' needs and ensure all our designs are crafted for the people, the purpose and the place. That is our mission.

### Architectural services

Masterplanning  
BIM  
3D modelling  
PassivHaus

Visualisation  
Architectural design  
Project delivery  
Consultancy

# Further and Higher Education

We have over thirty years' experience designing further and higher educational establishments, having completed projects for universities, campuses, academies, sports facilities, research centres and specialist libraries.

Today, design in the further and higher education sectors is as much about creating a small scale community that will cater for work, rest and play as it is developing a functional environment.

The impact of new technology on pedagogy is influencing education building design. The rise of informal, flexible learning spaces has led to a new breed of education environments in both new builds and 'adaptive re-use' buildings.

To remain sustainable and meet the growing expectations of students and parents, spaces that cater for life and work need to support both study and social interaction. These spaces must recognise students as valuable consumers and assets to the success of the higher education sector and the cities within which they live.







# CESAM, IAMP Park

Location: Sunderland

Value: n/a

The Centre of Excellence for Sustainable Advanced Manufacturing (CESAM) is a joint project between the North East Automotive Alliance, industry figures and universities.

Located on the International Advanced Manufacturing Park in Sunderland, the facility incorporates a 2 storey innovation centre with offices, classrooms, laboratories, meeting rooms, café, and event space linked to c.100,00sqft of flexible production space.

The role of CeSAM is to ensure manufacturing businesses in the North East are at the forefront of manufacturing technology and processes, providing the "catalyst for manufacturing productivity improvement across the North East", fostering world-class innovation, developments and learning.

CeSAM specifically tackles the difficulties associated with introducing digital and manufacturing innovations across multiple markets and their supply chains.

CESAM:

- will work with companies, their suppliers and customers to develop, scale-up, trial, test and prove technologies to industrial standard;
- plans to include a full-scale moving production line;
- will address an unmet industry need for innovation support in emerging technologies;
- will have a direct economic impact, enhancing the region's capacity to innovate;
- will support a significant increase of UK content within the region's advanced manufacturing sector.





# Liverpool International College

Location: Liverpool

Value: £22.5m

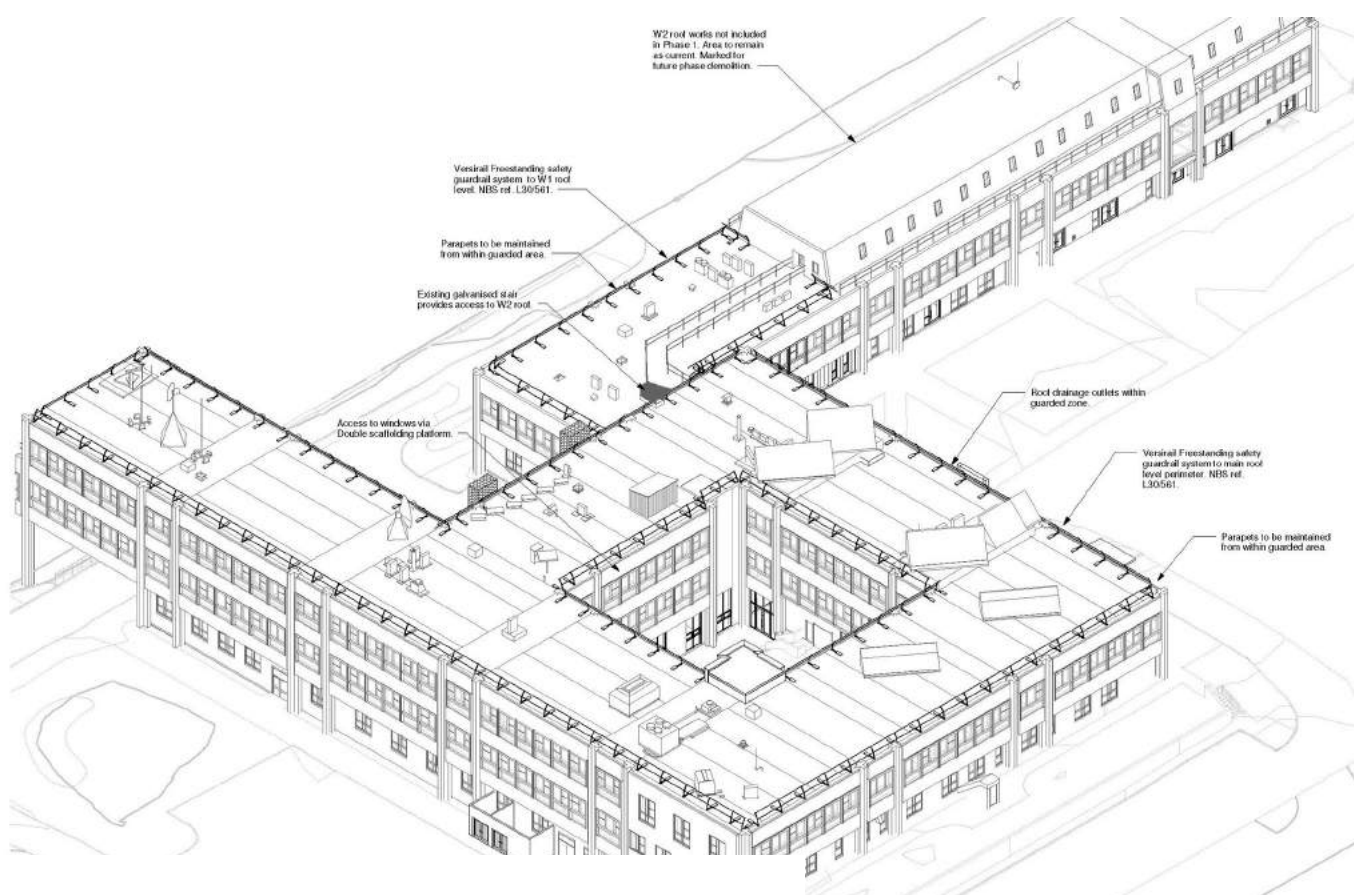
A partnership between Kaplan and the University of Liverpool prepares international students for entry into the University of Liverpool's degree programmes with courses in academic skills, key subject knowledge and English language. The project is to provide a new 'live/learn' facility catering for 900 students, and with high-quality residential accommodation for 265.

Our approach has been to create an architecture with a civic scale and dignity worthy of such an important gateway site, and befitting the history and ethos of an organisation such as Kaplan. The design retains a distinct identity for the two key components of the scheme – the residential elements are elevated in a tower, and the college elements are arranged in a 3-storey base building. These two building blocks are linked by a central atrium

space, which internally provides a visual and learning focus for the students. The main entrance atrium features a terraced inhabitable stair, which provides social seating as well as opportunities for more formal gatherings and presentations. The teaching and support accommodation offers a rich menu of teaching environments, with a variety of break-out, support and tutorial areas to maximise student and staff interaction. The arrangement has been designed specifically to reinforce the College's focus on student support and enablement.







# W and S Buildings

Location: Loughborough University

Value: £22m

The re-cladding and refurbishment of the late 1960's W & S Buildings is of critical importance to the University. The project requires complex phasing to allow the building to stay in use throughout the three year contract; when complete, it will offer state-of-the art laboratories for chemistry and materials sciences, within a highly prominent complex of buildings at a key gateway location on the West Park campus.

The bold external appearance of the buildings – typical of a late 1960s structural expression – is increasingly tired, and provides an inherently poor thermal envelope.

The project involves the comprehensive internal remodelling of both the W and S buildings with a series of new build entrances addressing access and level issues. The external envelope is rejuvenated with replacement window systems and the deep cleaning to the cladding. The project is to provide a high-quality external appearance, befitting the

prominence of the building itself and of the research it will house.





## W and S Buildings







# STEM Lab

Location: Loughborough University

Value: £12m

Loughborough University's STEMLab will act as a new hub for Science and Engineering, providing a truly student-focused learning environment boasting state-of-the-art facilities. It offers a 'drop-in' engineering workshop, alongside a range of modern laboratories and teaching spaces. CPMG were brought in after planning submission, to develop the designs and support the project through construction.

The project has a two-fold significance: firstly, the STEMLab facilities are fundamental to the University's strategic expansion in STEM subjects; and secondly, the building sits in a prominent gateway location on campus. Our refinements to the University's original proposals included a new external appearance, introducing more ordered elevations, larger windows, and high parapets to conceal roof-mounted plant. We also introduced a high-quality landscaping scheme which transforms the steeply sloping site into pedestrian-

friendly social space. Internally, our expertise has helped rationalised laboratory layouts and coordinate the significant building services and extract requirements.





## STEM Lab







# STEM Building

Location: University of Derby

Value: £14m

We were chosen by the University of Derby to design new facilities providing purpose-built environments for collaboration in the STEM subjects – Science, Technology, Engineering and Maths. The £8.5m project includes highly specialist research apparatus such as an anechoic chamber and wind tunnel, as well as more traditional workshop, laboratory and office spaces.

The building maximises the potential of a restricted site on the University's Markeaton Street Campus, setting 4,500m<sup>2</sup> of accommodation over four floors with direct links into the surrounding existing buildings. The development creates a new courtyard space, which has been designed to provide a new external environment for both STEM and the wider campus facilities. The BREEAM Very Good project includes photovoltaics for renewable energy generation, and exposed concrete soffits for thermal mass.







# Vijay Patel Building

Location: De Montfort University

Value: £42m

The redevelopment of the University's Fletcher complex was an exciting opportunity to transform a significant site within the city of Leicester.

The proposals form a critical phase in the university's long-term masterplan, built around a vision to re-connect the city centre to the River Soar via a series of linked public open spaces through the De Montfort campus. Combined with purpose-designed new and remodelled University facilities, the result is a series of high quality urban spaces.

The proposals create a purpose-built faculty of art, design and humanities on the site of the existing Fletcher buildings, demolishing a large part of the complex and leaving only the tower and the low rise buildings.

New accommodation includes the schools of architecture, arts, design, and fashion and textiles. The project includes contemporary and customer-focused

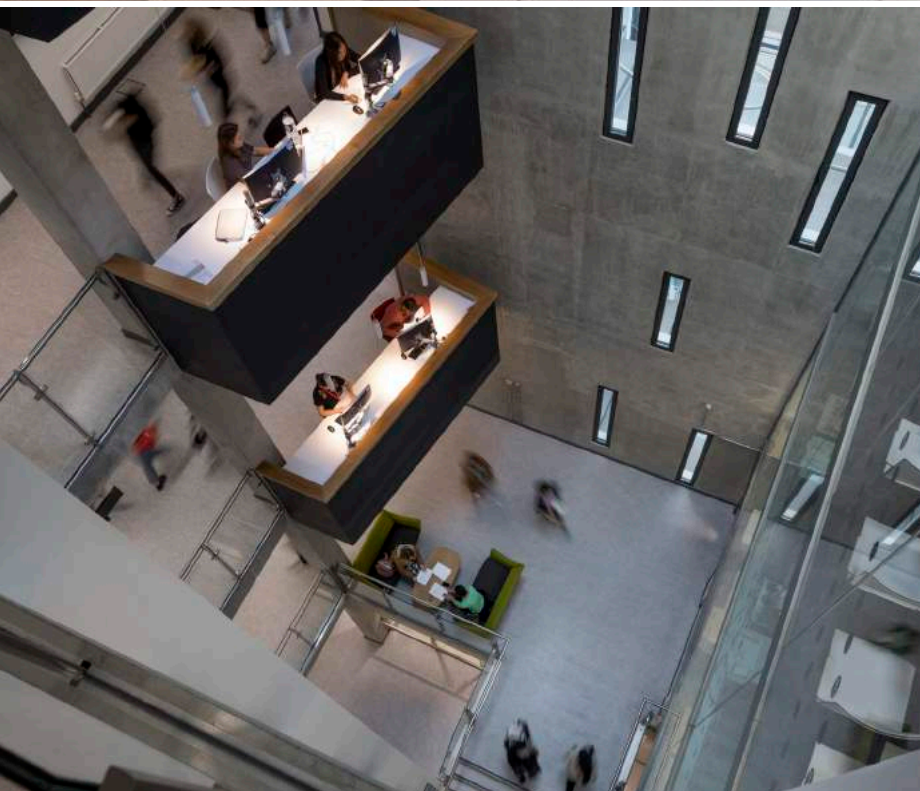
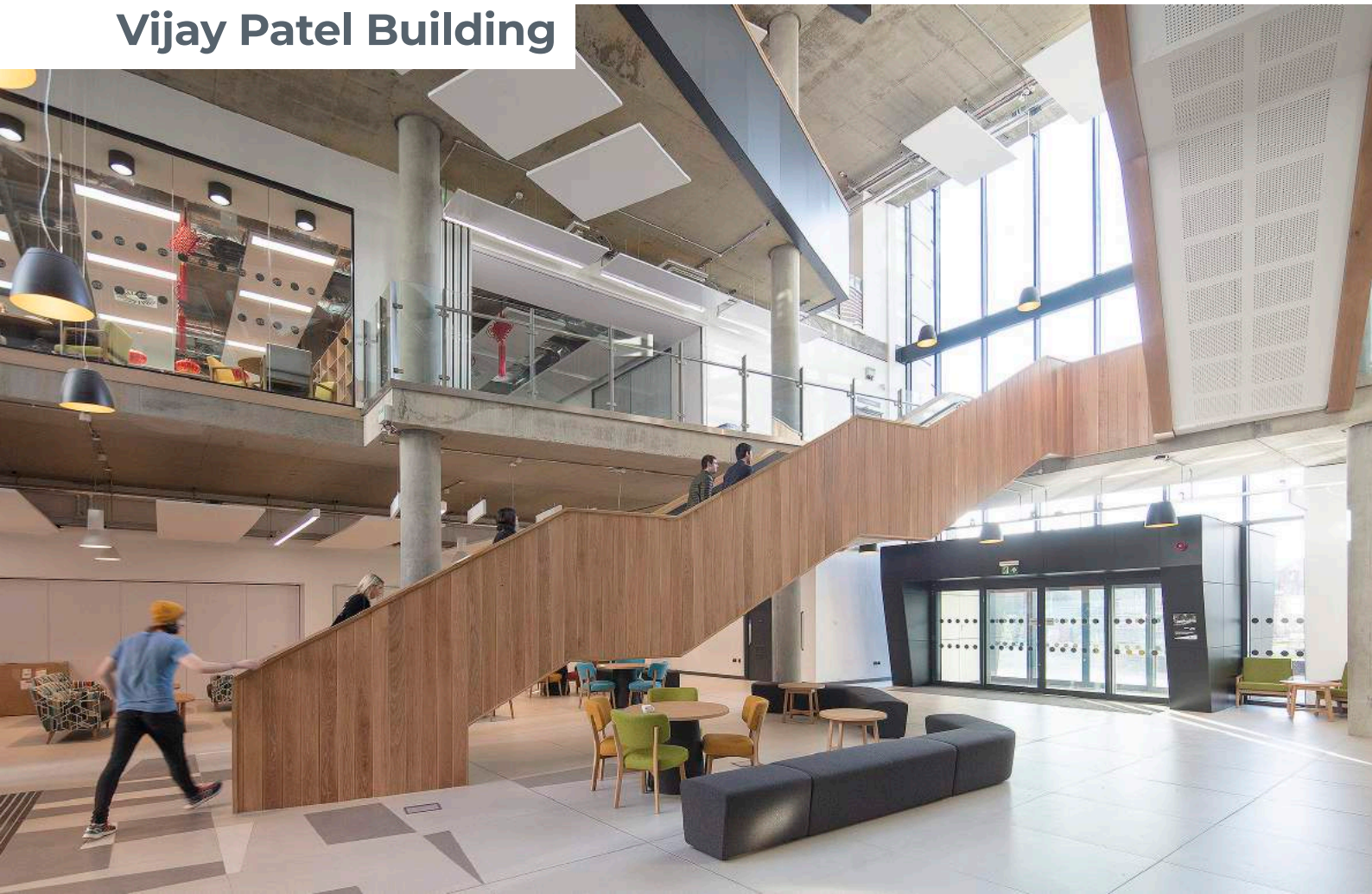
catering facilities which are light, bright and vibrant.

The faculty vision was to create a development that would impress stakeholders and competitors with its ingenuity and elegance of design. The facilities will play a key role in recruitment of staff and students, and celebrate both the area's industrial and craft heritage and its cutting-edge digital future.





## Vijay Patel Building







# Cripps Health Centre

Location: University of Nottingham

Value: £9m

The project replaces the existing Cripps Health Centre to provide a holistic approach to primary health and dental care for the university and wider community, catering for over 40,000 patients. The building includes GP consulting rooms, 4 bed Observation Room, Physiotherapy Room, Enhanced Procedures Rooms, Treatment Rooms, Mental Health Rooms a Seminar Room, 8 Dental Treatment Rooms and a Commercial Pharmacy.

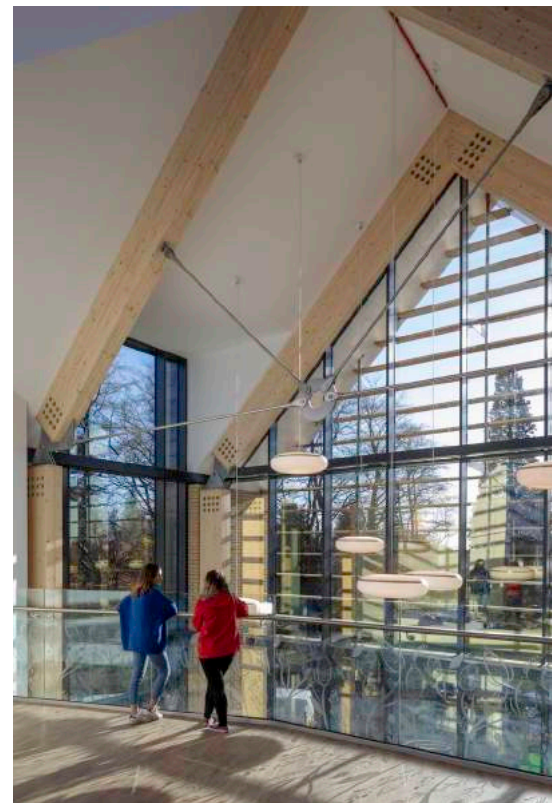
The GP and Dental accommodation are located in separate wings, which pivot along the contours from a shared double-height central space which hosts the entrance and reception functions. The space between the wings is used as a wellbeing garden.

The patient-focused rooms take advantage of the vista across the campus and the clinical back of house facilities

are located facing the grass banks towards the North.

The pharmacy is independent of the wings and occupies a prominent and accessible position towards the car park.

A natural material palette compliments the rich green context and the existing building materials located adjacent to the site.







## 23 Goldsmith Street

Location: Nottingham Trent University

Value: £9m

The 23 Goldsmith Street development will provide an exciting new office building for Nottingham Trent University. The building consists of 3 storeys of general office and meeting spaces with a 'shop front' and exhibition space on the ground floor to showcase key NTU initiatives.

With a bold architectural form, incorporating high quality external facing materials this building will transform this derelict brownfield site into a distinctive and attractive addition to the Nottingham skyline.







# Aerospace Integration Research Centre

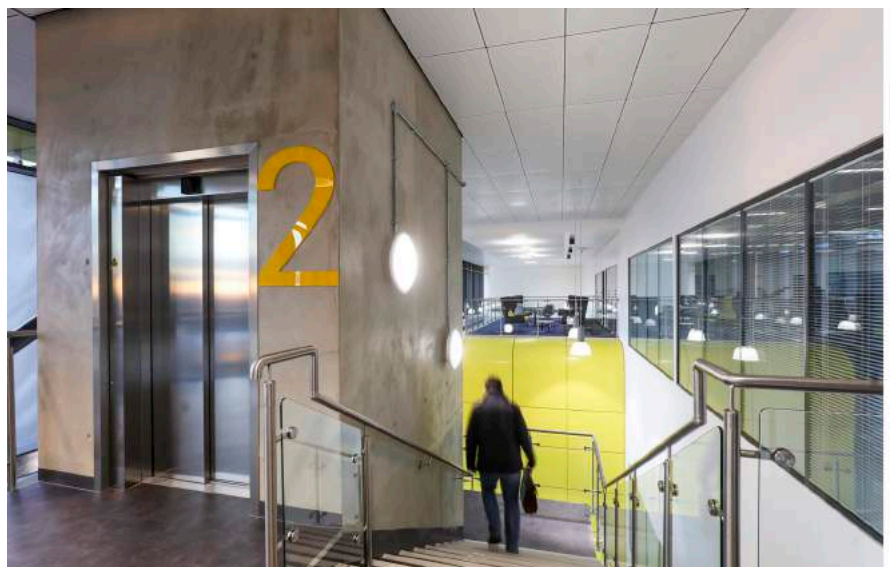
Location: Cranfield University

Value: £12m

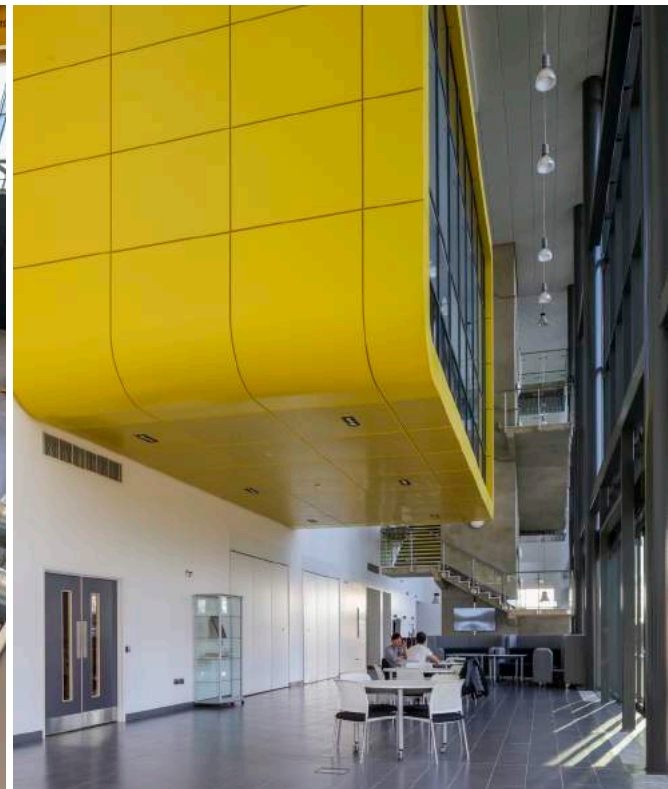
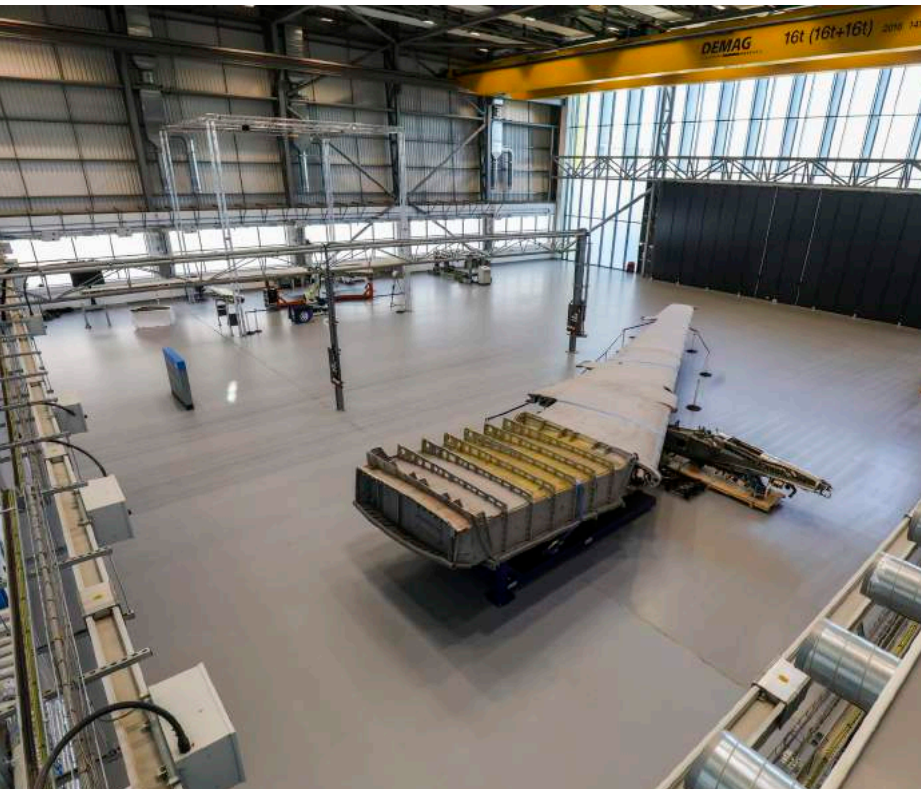
The AIRC, a landmark building delivered in partnership with Rolls-Royce and Airbus, will change the future design of aircraft. The three-storey building includes open laboratory space with a 40m clear span capable of housing large airframe integration projects. Other areas include presentation and visualisation space alongside state-of-the-art simulation facilities. Researchers and engineers from Cranfield, and its partner companies, work closely together in an open plan office environment.

The building is a strikingly-modern interpretation of a hangar – an appropriate typology for the location. The public face of the building houses a glazed triple-height ideas space with a suspended meeting pod. This will provide a showcase for the university and its partners, accommodating exhibitions and conferencing, as well as informal meeting areas. Adjacent areas introduce space for manufacturers to conduct private

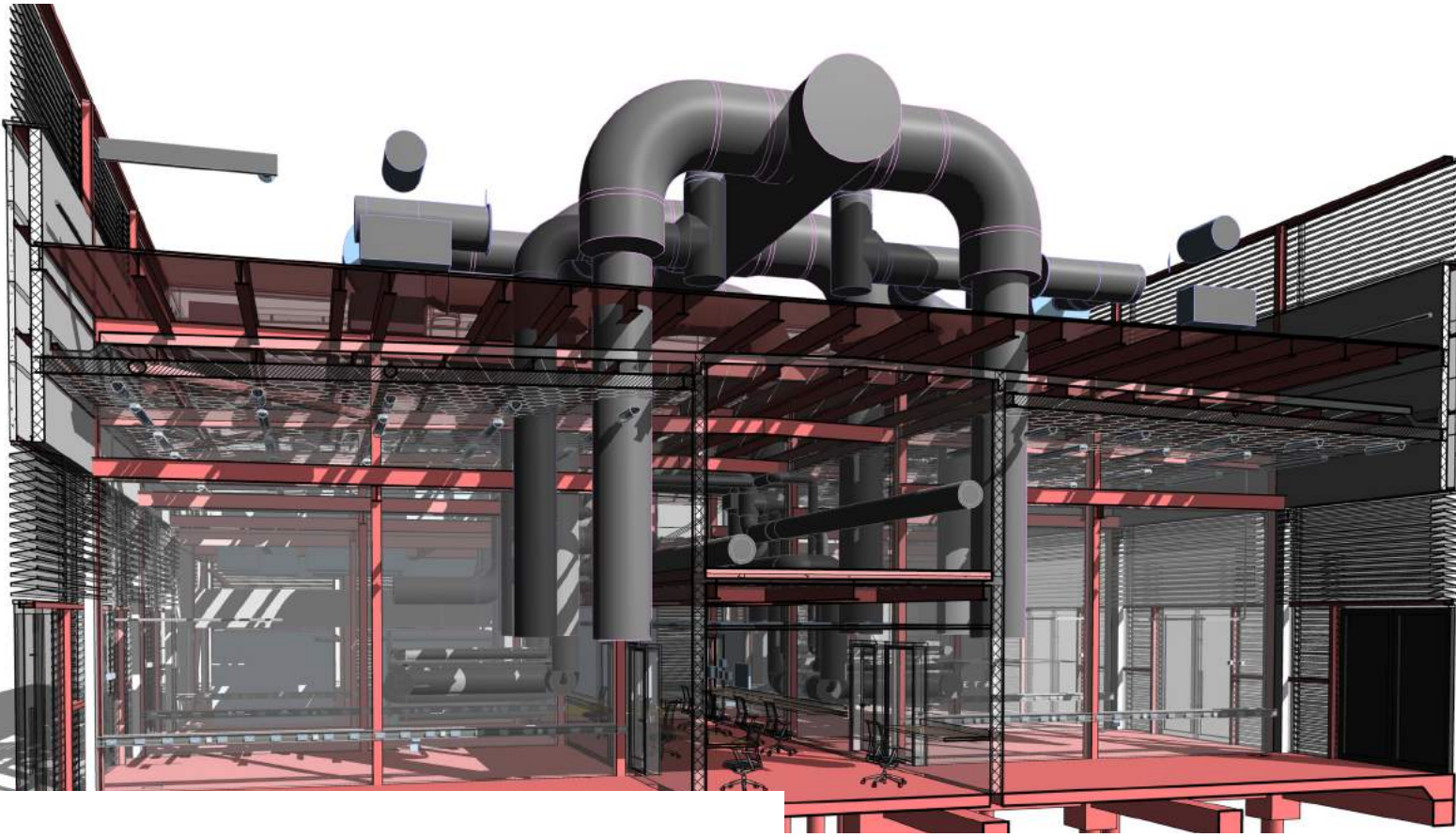
research, alongside office space, and meeting rooms for the university research team and partners. A triple height high bay area contains specialist avionics, thermals, mechanical, electrical and structural laboratories.











# Aerothermal USF Laboratories

Location: Loughborough University

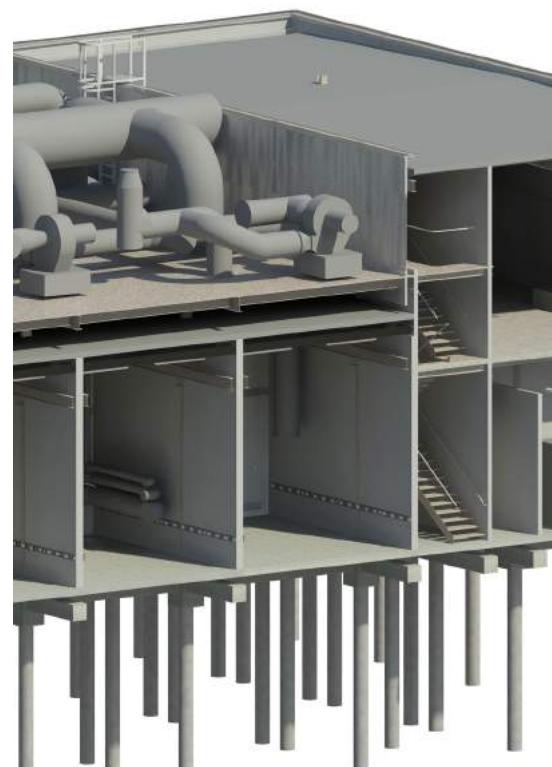
Value: £6.5m

The Rolls-Royce UTC at Loughborough University represents a strategic partnership between academia and industry set up to investigate Combustion System Aerothermal Processes. The facility provides 8 test cells and an associated control room in a standalone building adjacent to the current USF accommodation. Additionally, a suite of offices spaces for academic and research staff are located within an adjacent existing building.

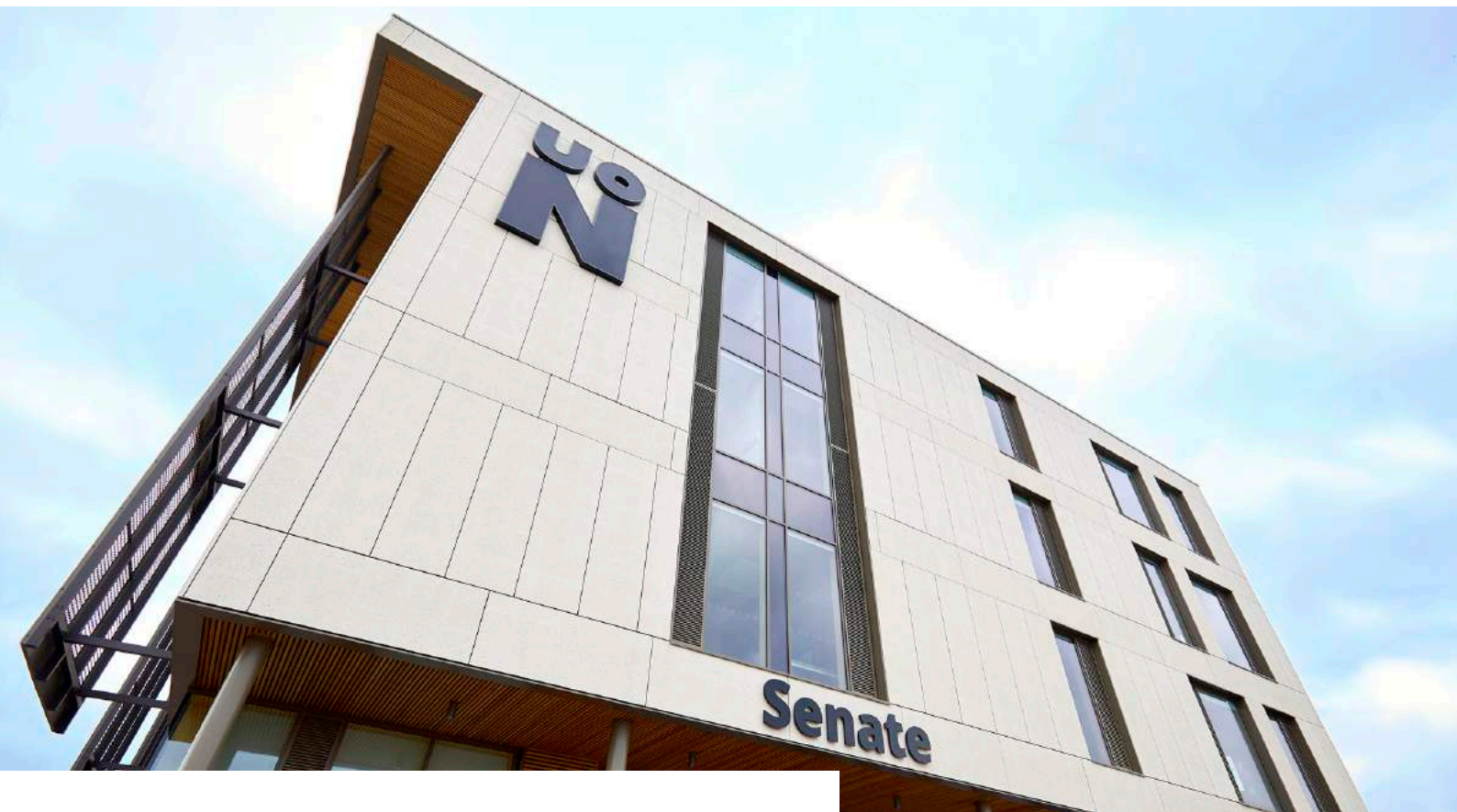
The facility is organised to suit the research and development requirements of the UTC. The frontage houses the 'meet & greet' aspect of the Test Cell Facility and a small meeting/conference space. Office space is provided at ground floor for commercial visitors and additional offices at first floor for research staff.

The middle section houses eight double height test cells serviced by a control room in a central spine of

accommodation. Above the ground floor control room sits a dedicated service zone which allows for ductwork routes internally from the plant room. The rear of the building houses a significant two storey plant room with additional plant located on the roof level, hidden by a full height louvred screen.







# Waterside Campus

Location: University of Northampton

Value: n/a

A transformational project, re-locates the entire university estate from numerous locales around the city to a purpose built campus.

The masterplan involved the development of a brownfield site to include academic buildings, student accommodation, commercial outlets, leisure facilities, and significant public spaces. The development of the Waterside site is a catalyst for the long-term regeneration of the area adjacent to the river Nene, south of Northampton City centre.

The Senate Building is research and management building created as part of a £300m masterplan. The building brings together various pre and post graduate research in a shared facility and consolidates the university management suite.

The Creative Hub is a new art faculty building that brings together various departments to create a consolidated

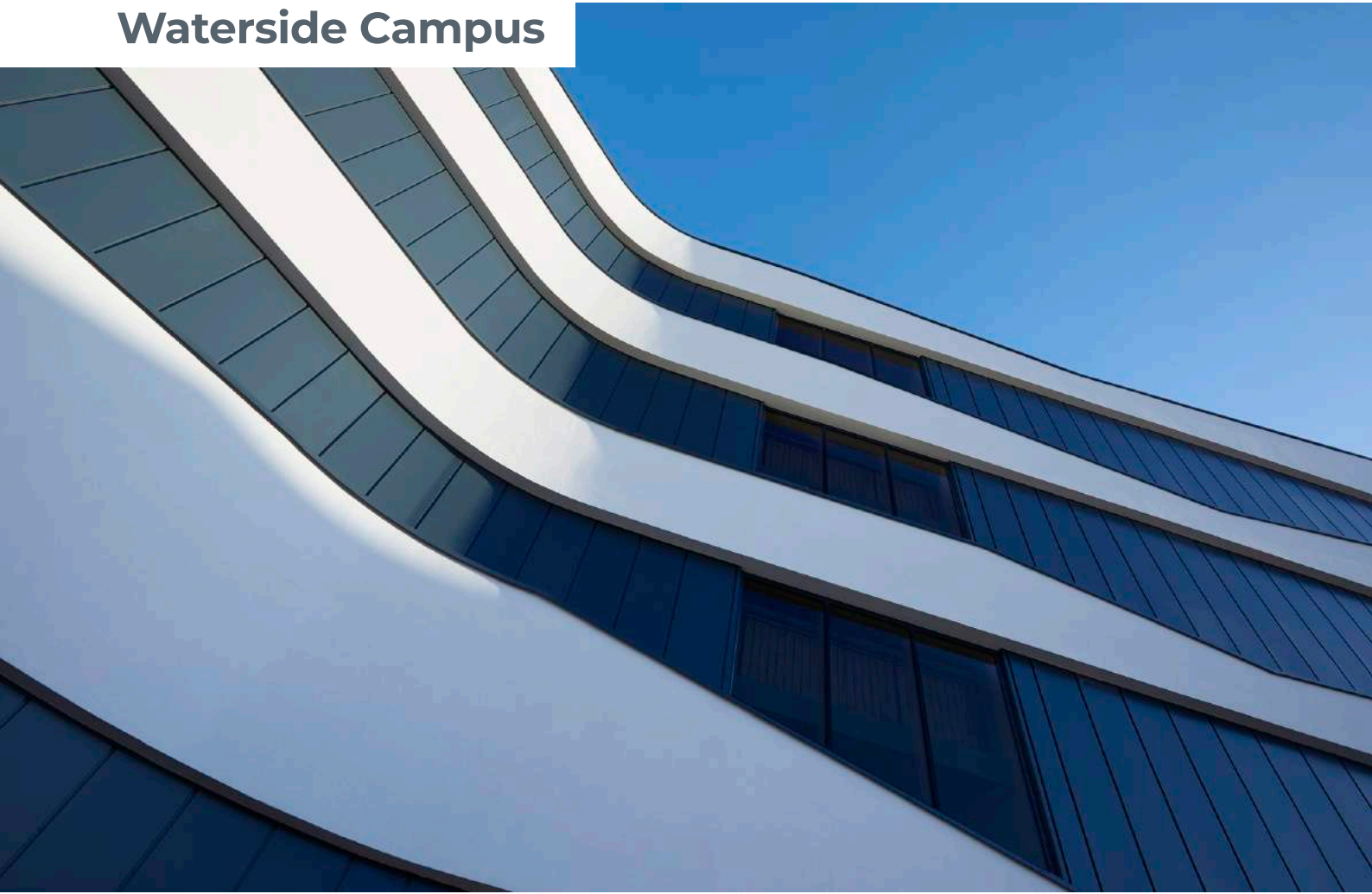
art faculty. The facility includes studios and workshops in a building with a contemporary industrial aesthetic.

The Logistics Hub adds a new estate management building that brings together the universities estates management team in a shared facility.





# Waterside Campus







# Student Service Centres

Location: University of Nottingham

Value:

Various

Five centres and three satellites arrayed across the University's campuses, provide one-stop-shops to access advice and guidance. Each centre welcomes students in a dynamic and flexible space where advice can be accessed in a variety of settings from online self-help to private one-to-one guidance.

Each student service centre and satellite, conforms to a university-wide brand with a common colour scheme, furniture and lighting palette. The constraints and features of each site, necessitates a variation to the baseline principles for spatial arrangement.

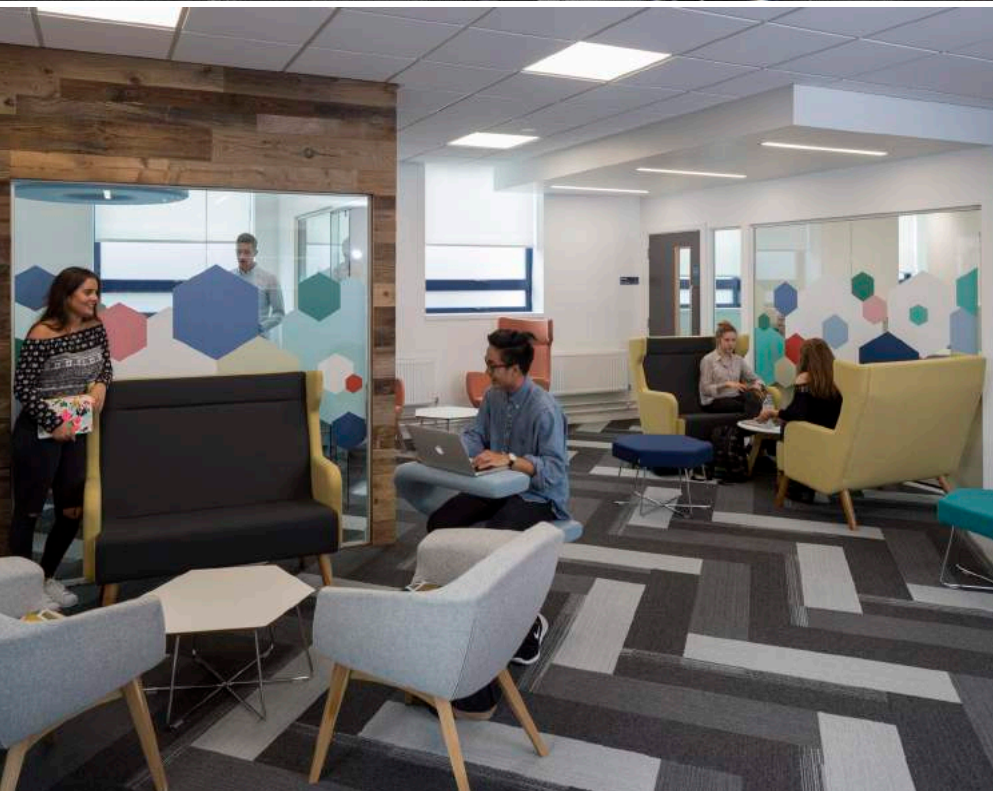
Advisors are based in professional and flexible office environments adjacent to each welcome hub. These are planned to maximise occupancy and provide the potential for hot-desk space. The desire to achieve a paperless environment reduces the need for storage of reference material while storage for personal items

is available at centrally located lockers, a resource for both permanently located and peripatetic advisors.





## Student Service Centres







# Portland Building

Location: University of Nottingham

Value: £15m

Re-orientating Portland to address the new heart of the campus was not without its challenges. It was necessary to remain sensitive to both the heritage of the original, Neo-Classical, 1950s building and Michael Hopkins's 2003 extension. The solution developed in conjunction with successive Students' Union representatives and is bold, yet sensitive to achieve their aspirations.

A bold new performance venue and flexible space supporting the many and varied activities associated with society membership revitalises the east wing creating a highly visible, accessible and dynamic hub of student life which reconnects with the parkland setting.

An existing terrace is extended, creating greater social and performance space for use throughout the year. Anchored around a new faith zone, a peace garden is created: a quiet

contemplation space with fixed seating and integrated sensory planting.

The main entrance is re-orientated to respond to student movement and creates a multi-height 'welcome hub' with large video screen to be viewed from the new Djanogly Steps, which formalise the approach and provide an outdoor recreation space.

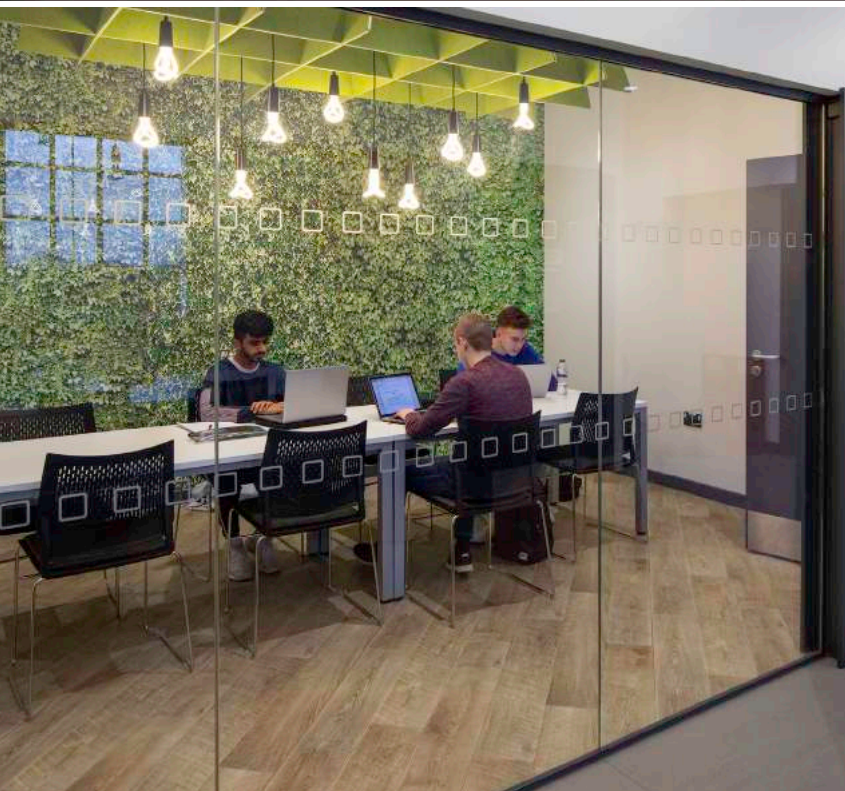
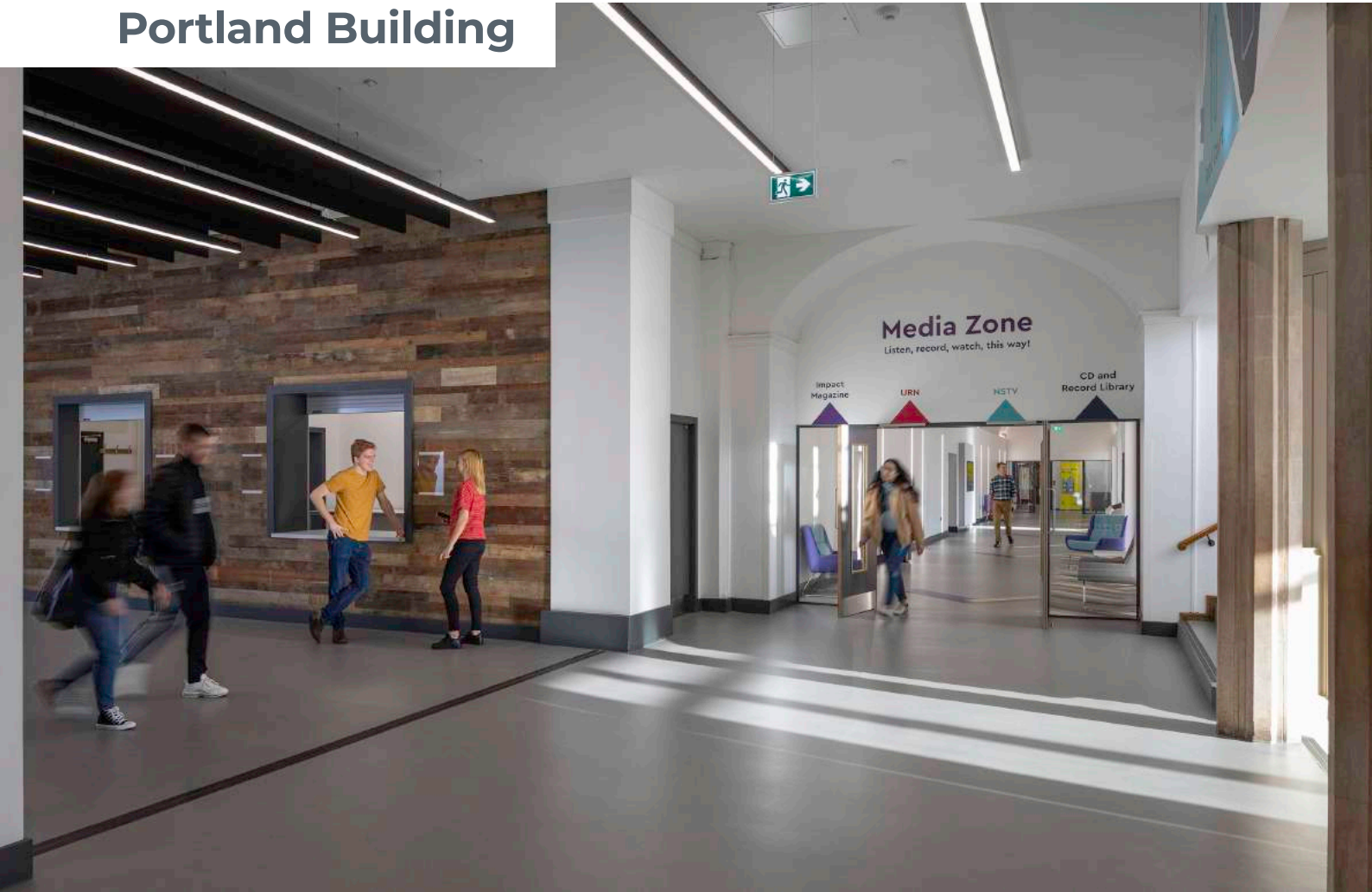
New retail malls host student run and commercial outlets with a dynamic hub promoting unplanned interactions and informal study space.

A wealth of flexible spaces that can be reconfigured using a rich palette of furniture styles realise the students' union ambitions for a dedicated, flexible hub at the heart of University Park.



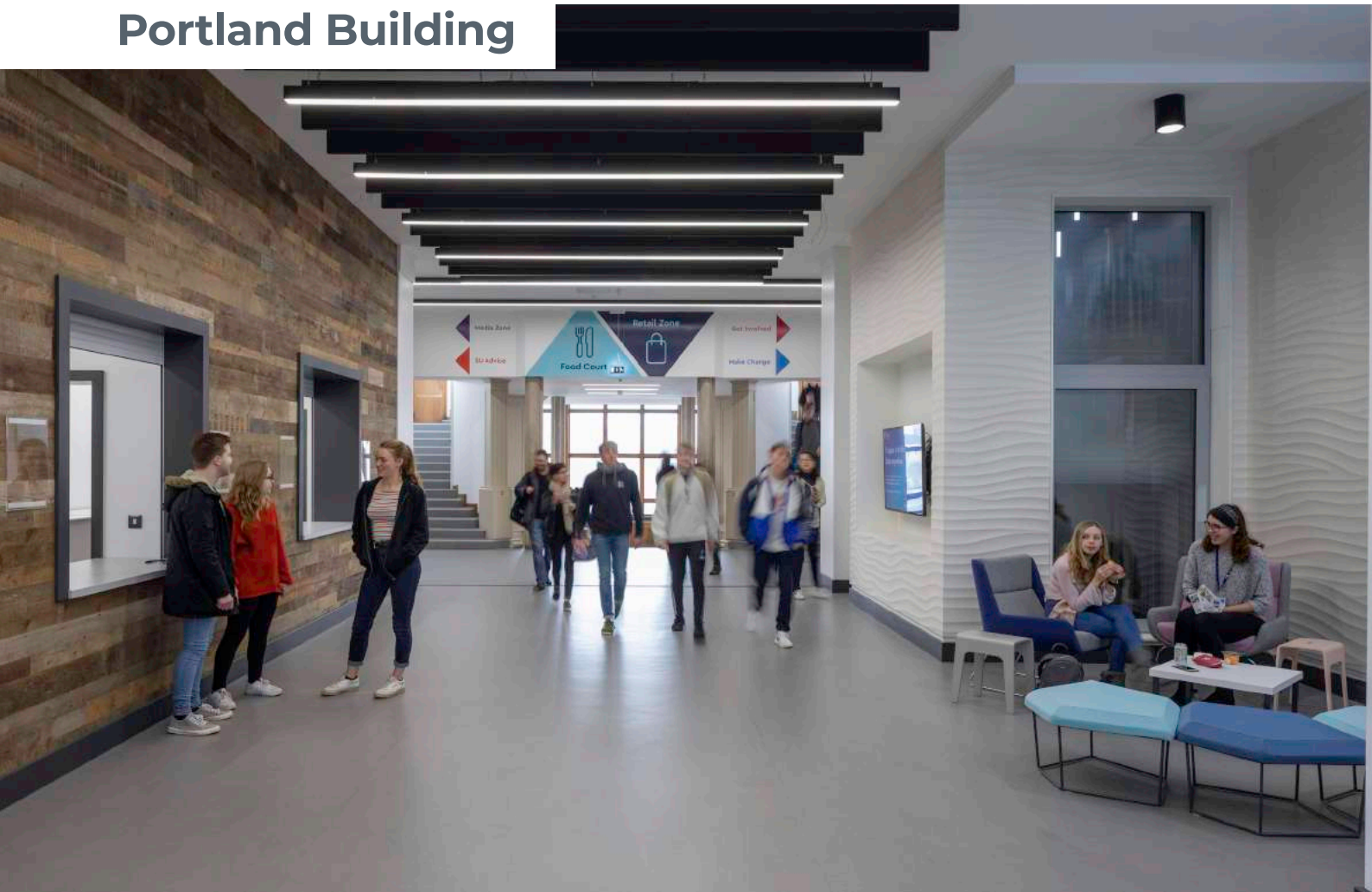


## Portland Building

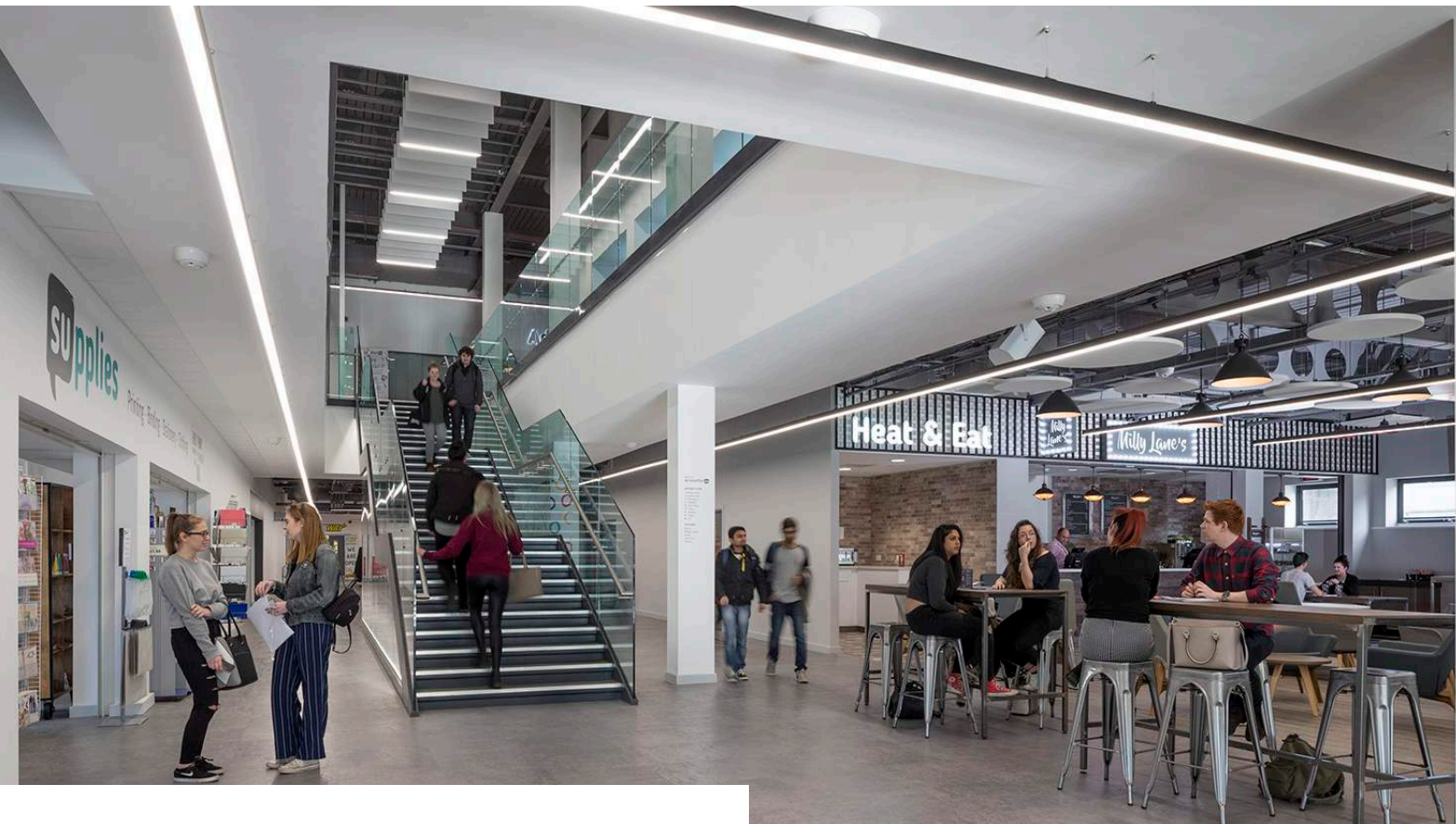




## Portland Building







# Campus Centre Development

Location: De Montfort University

An important and well-valued building at the heart of the campus, The Campus Centre is home to a busy and active Students' Union. The campus transformation project will see the Centre revamped to provide a modern and inspiring environment.

The new Fletcher Complex re-orientates the focus of the campus and houses the new catering facilities. This will allow the Students' Union to expand to the ground floor of the Campus Centre, and occupy a prominent position adjacent to the new public pathway.

By creating a large void in the centre of the building and linking ground and first floors with a running stair the proposals create a more user friendly environment. The ground floor has been opened up to increase access and glazing has been introduced at first floor level allowing connectivity with the newly landscaped Mill Lane.

The Campus Centre is redefined by reinventing the building as a destination that opens horizons through new experiences.

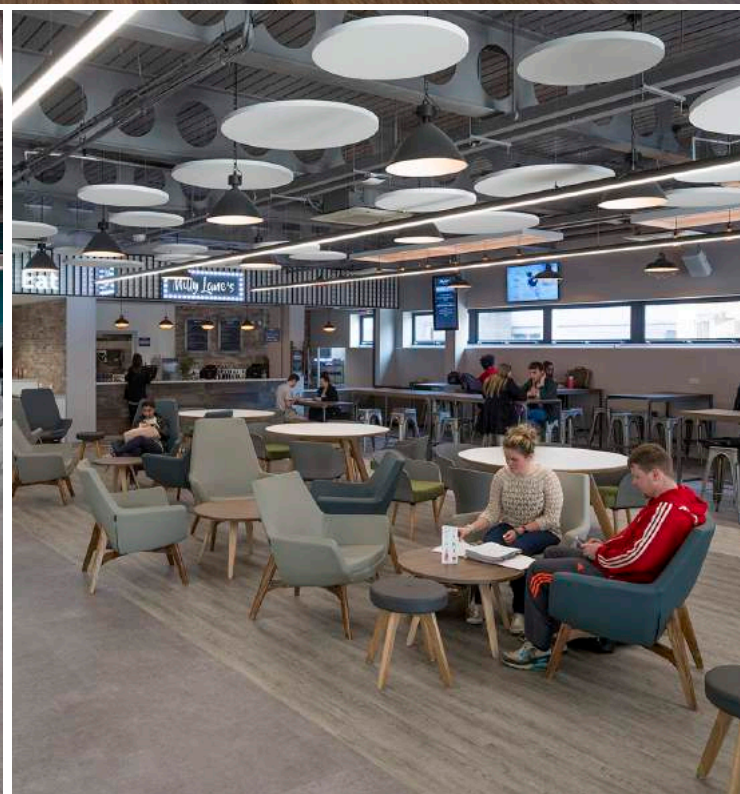
We improved the legibility and accessibility of the award winning student services and allowed greater connections with the outdoors by new landscaping.

We designed and tailored spaces to promote unplanned encounters, spontaneous collaborations and spaces to socialise, learn and relax.





## Campus Centre Development







## 'The Venue'

Location: De Montfort University,

Value: £3.6m

The refurbishment of an old sports facility to create a modern, multi-function event space. Facilities include a café, catering kitchen and a major function suite. The main hall area divides into three separate zones via sliding / folding partitions allowing multiple activities to be held at one time. Circulation routes flanking the main hall area provide access to the sub-divided areas independently and to associated areas of storage and self-contained WC clusters.

A new lift also provides access to the first floor area. Once a large open plan area is now be subdivided into smaller conference facilities with associated tea prep and break out areas.

Additional glazing has been introduced where internal spaces permit giving glimpses of activities within the building providing animation on most key approaches to the building.

The building has been re-clad in timber and render, and re-roofed to provide an

attractive and more thermally efficient envelope. A new high level canopy, supported on splayed columns articulates the welcoming entrance.







# The Gym

Location: Teesside University

Value: n/a

Situated over two storeys 'The Gym' creates an addition to the existing Olympia sports centre increasing the university's sports offer and includes a new exercise zone, weights and gymnasium area with additional consultation and treatment rooms. The accommodation includes flexibility to the major rooms to function as event spaces for the university outside of gym hours.

The proposals have been located and designed to offer an accessible, legible and welcoming environment for all user groups. The facilities included compliment the existing Olympia Sports hall creating a more rounded health and wellbeing facility for the campus.

The building envelope consists of dark grey brickwork banding at ground floor wrapping around the facade with random strips windows emphasising the movement and activity within the space whilst retaining some privacy for the users. The upper level is clad with anodised aluminium panels in a

contrasting colour and texture. The new extension provides a new public facing landmark, and a dynamic addition to the sports building.







# Orion Building

Location: Teesside University

Value: £3.6m

A new three storey addition to the University's Orion Building located on the eastern fringe of the Middlesbrough campus. The extension creates an attractive, modern entrance for the building, visible from the campus eastern gateway.

The accommodation now enables easy access to the central lift, stairs and wc's and creates student friendly breakout, social space, exhibition areas and a viewing gallery and provides access into the large laboratories at the East of the building.

The extension provides both a welcoming visitor and public facing entrance, and also a dynamic modification and addition to the teaching spaces. The proposals have been centrally located and designed to offer an accessible, legible and welcoming environment for these two user groups. The design creates a modern showcase entrance facility

that enhances the faculty's presence on the University Campus and provides an attractive stimulating teaching and working environment.







# Humanities Building

Location: University of Nottingham

Value: £6.2m

A new arts faculty building on the University Park campus in Nottingham has brought together the schools of philosophy, theology, art history, classics and archaeology.

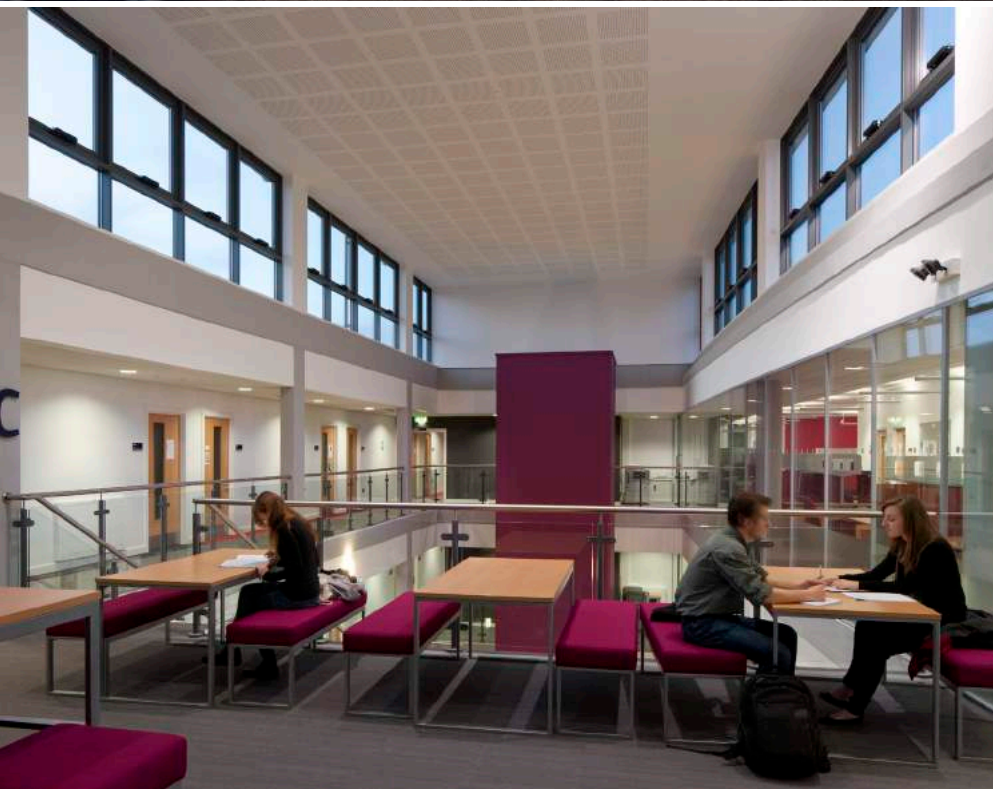
The building has a dramatic feature entrance in the eastern corner, to address the main landscaped open space and to face the existing history department buildings. The south-facing element of the project contains the shallow-plan cellular offices, and the north-facing element contains the larger scale spaces of the open plan offices, laboratories and seminar rooms. These elements are separated by a flexible arrangement of circulation, forum space, and ancillary rooms, which allow the two wings of the building to slide past each other to form sheltered external spaces at the entrance and the escape to the north. The entrance leads directly from the external landscape into the multi-height forum space, and offers excellent views from outside through a large glazed screen.

The facility achieved a BREEAM 'excellent' rating. It has an open loop water source heat pump, exposed soffits and night time purging, assisted natural ventilation, high levels of natural light and solar screening to the south west elevation.

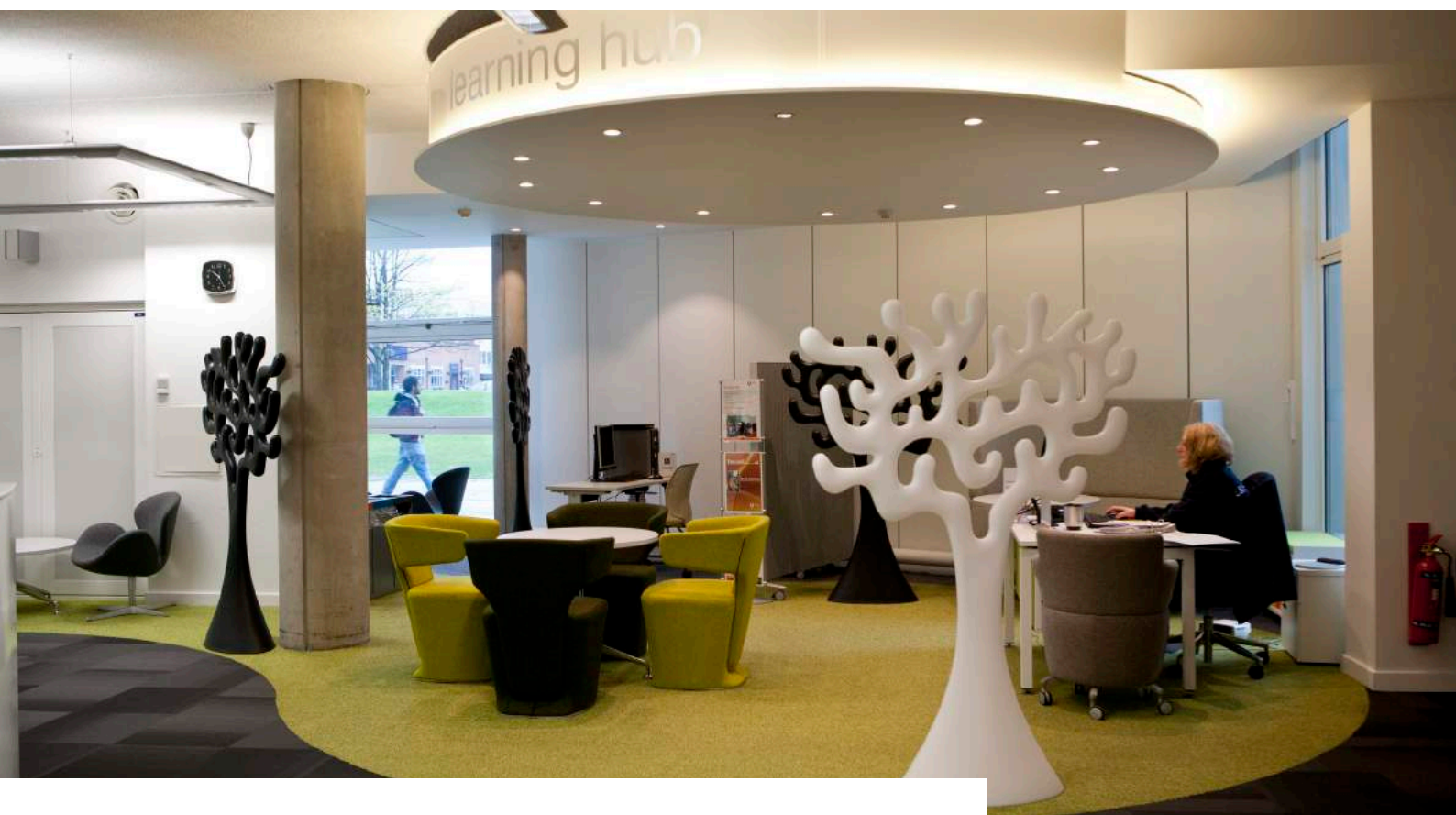




# Humanities Building







# Library Refurbishment

Location: Teesside University  
Value: £1.2m

The academic library at Teesside University was originally completed in the late 1990s, but by 2010 it was considered to offer too formal and restrictive an environment for a contemporary hub of learning.

We were appointed to re-imagine the ground floor areas in 2011, and won a competition to carry on this work for the three upper floors in 2015.

Our approach has been to establish an internal environment offering continued surprise and delight. We have incorporated a rich menu of learning opportunities in a vibrant setting, catering for everything from social learning, to collaborative group working, to individual silent study. Our design process was enriched through extensive consultation with the students and staff, and our proposals were tailored to the responses received. We have included some radical remodelling of the floor plates to improve flexibility, transparency,

and movement; we have also significantly improved natural daylighting and offered stunning views over the campus by creating new full-height windows in each corner of the building.

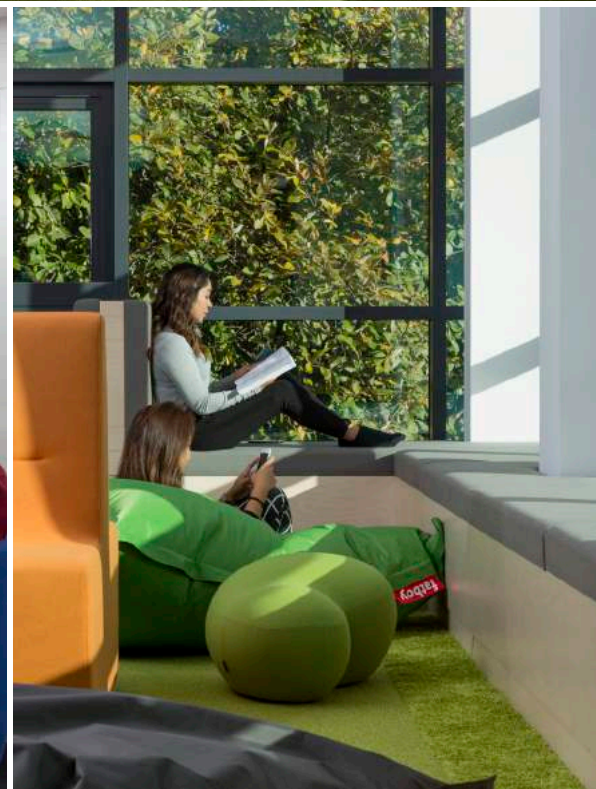
## Completion Dates:

Phase 1: 2012  
Phase 2: 2016  
Phase 3: 2017  
Phase 4: 2018





## Library Refurbishment Phase II





## Library Refurbishment Phase III and IV







# Grove Farm Sports Pavilions

Location: University of Nottingham

Value: £3.8m

Sports students are benefiting from two new sport pavilions at The University of Nottingham, unusually located on a flood plain and designated green belt adjacent to the River Trent.

The university chose our innovative design owing to its ingenious use of a concrete 'table' to provide instant drainage in light of a flood, allowing the pavilions to remain in use at all times.

The sports pavilions are raised 1.5 metres above ground level to prevent any building damage in light of a flood. Gabion walls are used to the 'flood storey' and enclose the area below the finished floor level, providing retention where required. The pitched roof resists climbing and helpfully prevents balls from getting trapped during sports sessions. The roof of pavilion A provides a location for a photovoltaic array providing

a renewable energy source for the site too. Each pavilion has changing facilities for 22 and 18 people.







# Hugh Aston Building

Location: De Montfort University

Value: £20m

This landmark building in the centre of Leicester improves the learning experience for business and law students.

Our design sits on a prime site, capitalising on the city's inner ring road realignment and providing excellent facilities for the university.

The project has revitalised an area of considerable historic interest in the thriving city and provides accommodation for the university's schools of business and law.

The impressive building design features a number of large, copper clad lecture theatres, angled along the main street frontage and backing onto a dramatic atrium space. A sheltered courtyard space with winter gardens has been created from the curved shape of the building providing daylight into a series of small cellular offices.

The courtyard is shared with the adjoining centre of excellence in the performing arts, providing a vibrant external setting for performances, as well as general social use.

Ground floor accommodation to the south of the building includes a café and retail space facing onto a landscaped square. The scheme was delivered to minimise the university's carbon footprint, both in construction and in a lifetime of use and has achieved a BREEAM excellent rating.





# Hugh Aston Building







# Centuria South

Location: Teesside University

Value: £11.1m

The Sports and Health Sciences department at Teesside University has benefitted from a £12.4 million makeover. Featuring a dental school, lecture rooms, sports and physiotherapy laboratories, a hydrotherapy pool, offices and informal work and social spaces, the new building will bring state of the art facilities to students at Teesside.

offices, classrooms and laboratories and maximisation of natural daylight throughout.

The design features two separate entrances to the building - one for members of the public accessing the dental clinic, and one for university staff and students. The design complements the existing Centuria Building and the two facilities are linked by a dramatic four-storey atrium space, forming a new heart to the expanded School of Health.

Sustainable design features have been introduced throughout the building to minimise its impact on the environment. These include a CHP facility linked to the hydrotherapy pool, exposed thermal mass, hybrid natural ventilation for





# Centuria South







# Darlington Campus

Location: Teesside University

Value: £7.5m

We carried out the design development and technical delivery of an iconic new campus building.

glass, whilst the eastern elevation comprises a series of zinc clad fins and translucent panels.

The stand-alone building is located on a newly-landscaped site, adjacent to the east coast main line and in close proximity to Darlington College, improving the offering to new and existing students.

The building's primary use is for general purpose teaching, business development and shared learning. It also incorporates a three-storey library, double-height café space, staff facilities and independent entrances for students and corporate users.

The accommodation is located along a 'spine' wall which runs the entire length of the building, sloping both horizontally from one end to the other and vertically at each end. The dramatic west-facing facade is a prominent vision from the railway owing to its five-storey curtain wall enlivened by splashes of coloured







# Phoenix Building

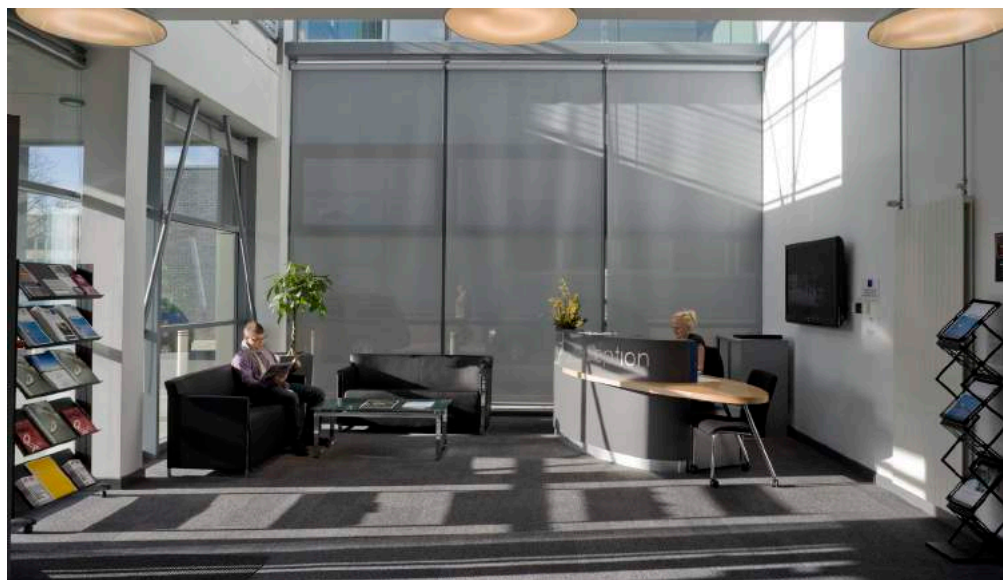
Location: Teesside University

Value: £12m

The Phoenix Building is the vital first phase of the DigitalCity development in Middlesbrough. A 'hot house' for ideas and intellectual property in the field of digital media, the building provides high-quality accommodation for postgraduates and fellows, as well as much-needed studio space for local digital businesses.

sound studios, screening rooms and a three-storey high Sound Stage offering creative industries prime space for growth and development.

This four-storey building sits in a prominent location on the edge of Teesside University Campus. The impressive entrance pod is zinc clad, anchors the western end of the building and houses a series of informal display and meeting spaces. A dramatic south facing glazed wall provides animation to the circulation spine and helps drive the natural ventilation system. A series of studio spaces spring from the central spine and provide highly-efficient and flexible studios for the digital arts sector. Exposed coffered ceilings and translucent cladding create a light and airy environment for the occupants whilst the ground floor houses specialist digital







# Athena Building

Location: Teesside University

Value: £6.4m

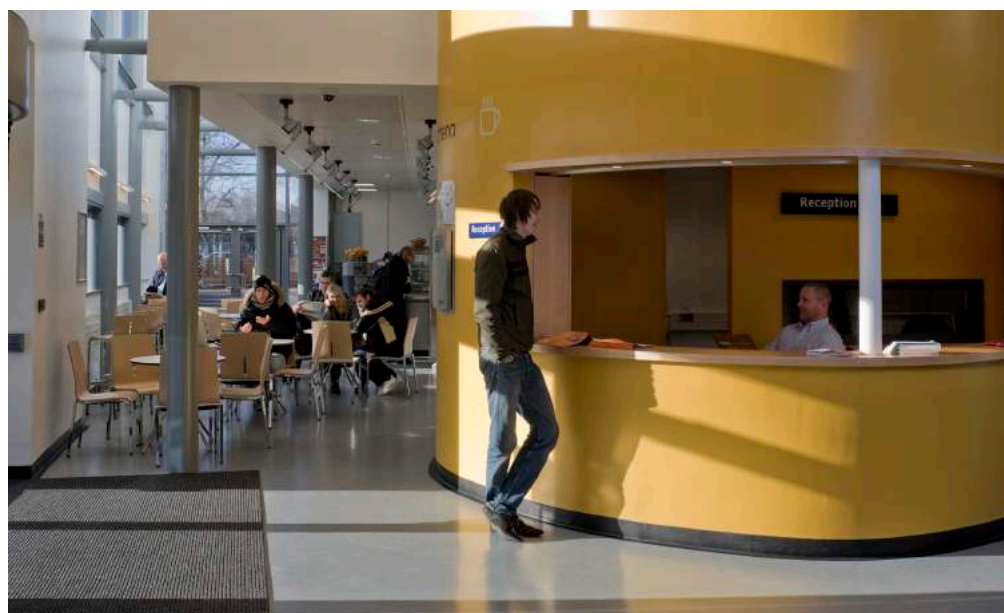
An impressive 3,750 square metre studio space is now the heart of digital media and arts in Middlesbrough. The Athena Building is now home to the impressive teaching and learning space for digital, media and design students, brings the creative curriculum under one roof, thanks to our design.

delivery and provides the university with an environment in keeping with its goal of pursuing excellence.

Part of the university's flagship DigitalCity initiative, the Athena Building caters for world-class undergraduate study in computer animation, games development, digital design and digital media.

Designed to embrace creative learning and technology, the flexible studio accommodation is arranged around a multi-height 'hub' space providing breakout areas, display and exhibition spaces alongside formal and informal meeting areas.

Responsive, flexible and environmentally sustainable, the new building provides a fitting setting for the excellent curriculum







# Richard Morris Building

Location: Loughborough University

Value : £2.55m

As Loughborough University Business School continues to grow, We designed an extension for the existing Richard Morris Building.

The improvements feature a reception and foyer space, breakout areas, academic offices and a suite of lecturing facilities for postgraduate courses, including the prestigious MBA. The design also makes full use of a two metre descent across the site to incorporate the lecture facilities at lower ground floor level, overlooking the existing sports pitches.

The existing building is a landmark at the main entrance of the campus, and the new scheme builds upon this status whilst maintaining a degree of aesthetic autonomy to reflect its discrete function. As a result, the design extrapolates the curvilinear geometry of the original, but adopts a very different elevation treatment.

We developed a low-energy strategy for the building, in partnership with Loughborough University, which is naturally ventilated and fully lit by day light. Solar gain is minimised through the use of a variety of passive shading techniques, developed through an in-depth study of 3D sunpath modelling before the design was finalised.







# ChELSI Project

Location: University of Sheffield

Value: £3.4m

Creative use of dis-used laboratory space at the University of Sheffield was key to securing the future of pioneering research in the city. ChELSI (Chemical Engineering at the Life Science Interfaces) is a unique new research institute at the University of Sheffield which needed a new home. CPMG created a design using largely empty multi-storey combustion laboratories within the existing Chemical and Process Engineering Department to rehouse the institute

The unique refurbishment required new intermediate floors to be inserted overlooking multi-height atrium spaces. A number of highly-serviced laboratory spaces, set adjacent to a flexible 'ideas zone', were created to accommodate the expanding research team.

The proposals have created a spatially-exciting environment which opens up the existing building, and promotes

the university's aspiration for cross-disciplinary collaboration. A low-energy approach was at the heart of the developed scheme, including the introduction of natural daylight ventilation in abundance to the existing deep-plan spaces.







# ICoSS

Location: University of Sheffield

Value: £3.3m

A state of the art research facility at the world-renowned University of Sheffield is set to be an important landmark in the city.

The Informatics Collaboratory for the Social Sciences (ICoSS) building will provide a cutting-edge laboratory within a landscaped setting maximising use of sustainable technology and forming a hub on the proposed new campus.

Jessops Campus will benefit from a small public open space providing an attractive pedestrian link to the main entrance. The landscape is brought to life by an elevated, sculptural conference room, which creates new views across the site and forms a dramatic marker for the building's entrance.

The laboratory floors are aligned against a south-facing atrium which contains the primary vertical and horizontal circulation effectively acting as a thermal collector to drive natural ventilation, passive

solar heating and heat recovery. Other environmental features of the building include a roof garden, with benefits to building insulation and rainwater run-off control, as well as establishing a dramatic external space.







# Student Health Centre

Location: University of Sheffield

Value: £2.4m

Students at the University of Sheffield are benefiting from an award-winning health centre within the city centre campus.

The building accommodates 12 GPs, provides additional facilities for nursing and community health staff, a minor operating theatre, patient waiting area, administrative areas and an independent pharmacy.

Designed over two storeys, the centre is a bold, contemporary, visually-striking building inside and out. Two blocks of accommodation sit either side of a double height waiting area. One block contains the consulting rooms with the other housing administration and staff facilities.

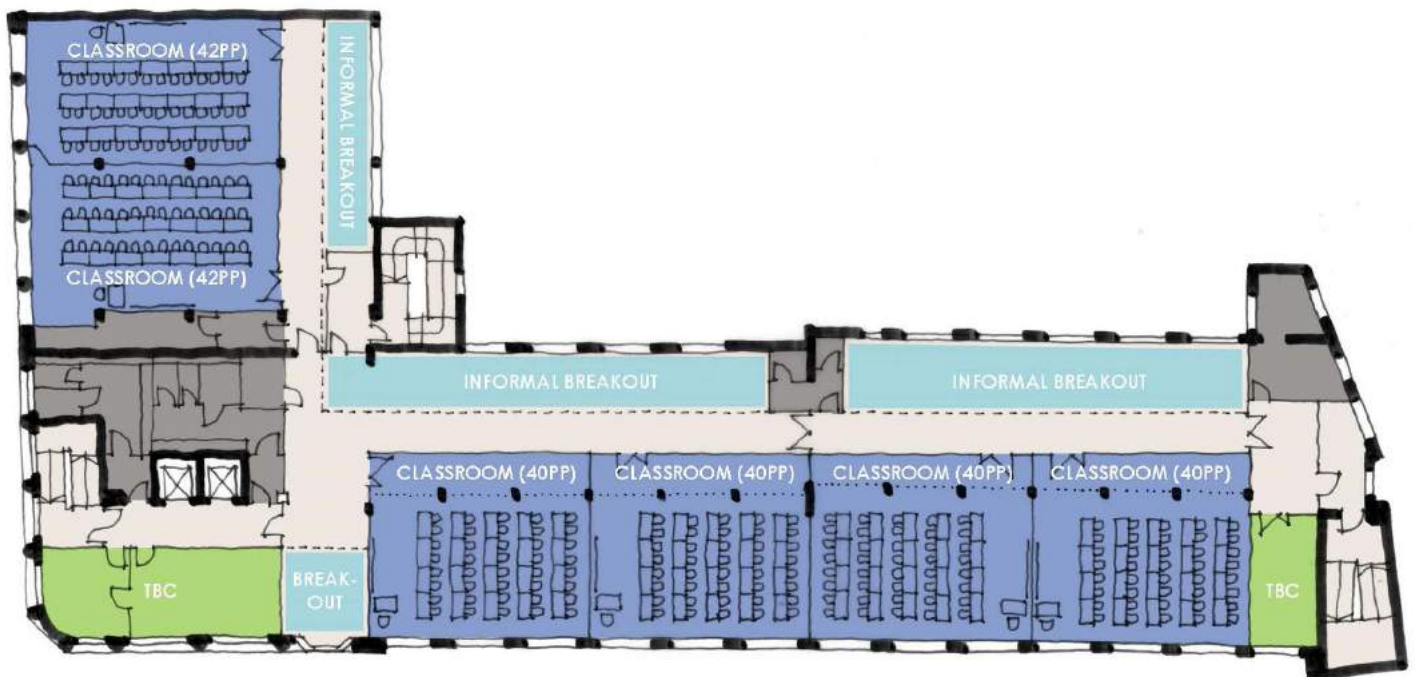
The interior is very bright and cheery, with high-quality interior detailing and roof lights allowing daylight deep into the building heart. As a result of the sloping site it has been possible to slide the pharmacy under the main building

incorporating it into the retail streetscape.

The centre is highly energy efficient with a natural ventilation system and solar shading used to avoid overheating and the project won a Yorkshire RIBA award.







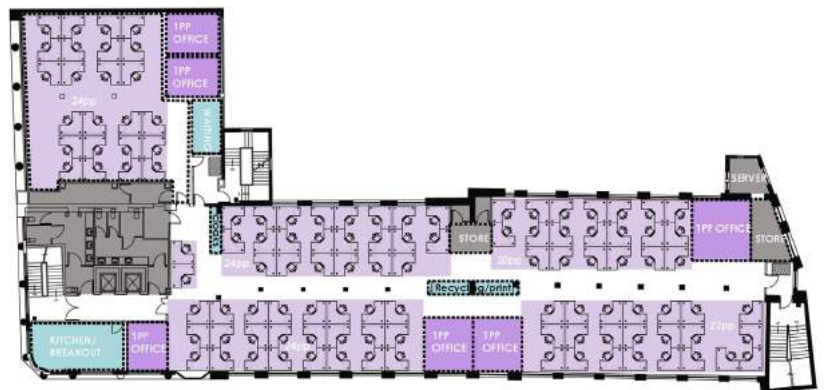
# Heritage House

Location: De Montfort University

Value: £0.64m

As Part of the Campus Space Reallocation Project we assisted De Montfort University in the refurbishment of Heritage House, a four story redbrick building on the fringe of the campus.

The four floors of redeveloped space provided accommodation for the International recruitment team, Core Systems Modernisations Team of IT users, the ITMS team including 60-70 Staff with Service Desk, Management and Meeting Rooms and six, 40 person classrooms.







# Bilborough College

Location: Nottingham

Value: £17m

One of the UK's leading sixth form colleges selected our sympathetic design for its new facilities. The student experience at Bilborough College is set to be enhanced by the varied parkland setting, landscaping, sensitive planting and remodelling.

Currently offering state of the art teaching, learning and sport facilities for circa 1800 students studying for A-levels and the International Baccalaureate, the new facilities will create a positive environment for young adults and teachers.

Major elements of the design for Bilborough College include a stepped amphitheatre, located between the college and the sports hall with a dedicated 'wet land' area to create a sustainable draining system within the site.

The teaching clusters are united by a linear, top-lit street which provides the primary circulation route across all levels

of the building creating ample areas for socialising.

The design of the new building fully exploits the natural contours of the landscaped site to reduce the apparent height and massing of the new building visually. Four-storey accommodation on the northern side of the street accompanied with three-storey to the south ensures the building sits comfortably within its appealing setting.







# Stafford College

Location: Stafford

Value: £8m

Stafford College will benefit from a new teaching facility on the town centre campus offering a suite of courses within beauty, catering and hospitality sectors, as well as leisure facilities for the public.

Our design sits comfortably on the same site as the Grade II listed Tenterbanks Building and a newly-landscaped area forming the heart of the campus. The building incorporates beauty therapy and spa facilities, catering and hospitality, a Learning Resource Centre, IT suites and dining facilities for students and the public.

We sensitively incorporated the new learning facility with the historic fabric of Tenterbanks Building and houses a new entrance reinforced by the location of the new Learning Resource Centre (LRC). The LRC overlooks a new atrium space created between the 'hidden elevation of Tenterbanks' and the new floorplate, establishing a unique and

dramatic space at the heart of the college.

The accommodation features high levels of glazing to the elevations surrounding areas for public use, including the café, restaurant and beauty salons. These areas are located at ground floor level, with independent entrances from the campus heart and the public realm.







# Beeston Campus

Location: Stafford

Value: £8m

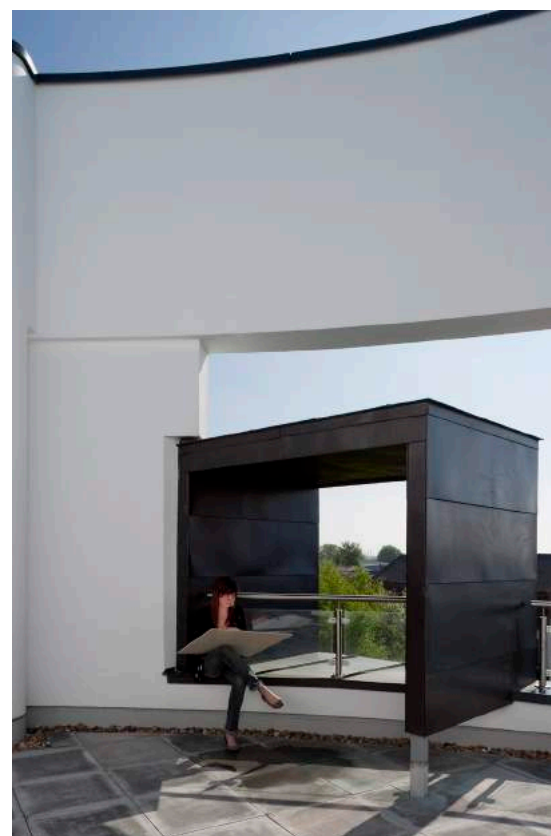
The college had operated from its Chilwell centre in Nottingham for 53 years. Over the years the site had become overcrowded, poorly laid out and with some facilities unsuitable for the current range of courses. The college wanted to create a landmark building fit for the 21st century.

The first phase to be completed was the new teaching block. A three-storey classroom block was developed on the north west side of the college, replacing temporary accommodation.

The new block links to the existing college at ground level and includes a central staff lounge, head of department offices, and a purpose-built open plan office that is lit and ventilated by a north-facing skylight.

The classroom block is clad in a striking combination of white render, varying shades of grey and red brick and natural cedar wood. Outside, a small landscaped courtyard has been created between the

new and existing buildings to provide a sheltered seating area for staff and students.







ARCHITECTURE & INTERIOR DESIGN

*People. Purpose. Place.*

Nottingham	23 Warser Gate Nottingham NG1 1NU
London	31/35 Kirby Street, London EC1N 8TE
Birmingham	The Lewis Building, Bull Street, Birmingham. B4 6EQ

[enquiries@cpmg-architects.com](mailto:enquiries@cpmg-architects.com)

[www.cpmg-architects.com](http://www.cpmg-architects.com)