

cpmg

OFFICE AND COMMERCIAL SPACES

www.cpmg-architects.com



WHO WE ARE.

CPMG is an award-winning firm providing services in architecture and interior design.

Formed in 1997 following the merger of two highly successful practices in Nottingham, we offer over 20 years of cross-sector experience and have built a reputation for designing buildings and spaces that not only meet our clients' needs but are also delightful places to be.

Working from our headquarters in Nottingham and our offices in London and China, we deliver projects across the UK and around the world.



We're innovative, approachable and creative people.

We believe in designing places that meet our clients' needs and ensure all our designs are crafted for the people, the purpose and the place. That is our mission.

Architectural services

Masterplanning
BIM
3D modelling
PassivHaus

Visualisation
Architectural design
Project delivery
Consultancy

Office and Commercial Spaces

We work with developers to design new business facilities targeted to new markets and with occupiers to rationalise and improve existing workspaces.

Our key objective is to help clients to create an environment that addresses their strategic business needs and aspirations and to creatively communicate their vision to tenants or staff.

Our service focuses on three essentials: **research**, to gather information that helps us to understand the business, its values and aspirations **communication**, to investigate the possibilities and produce option appraisals to show and evaluate our ideas solutions, to identify the most appropriate **solution** and make it happen.

We are innovators in sustainable office design and have completed the first carbon negative office building in the UK. Our office buildings integrate the latest in sustainable design solutions - they use high efficiency heating and necessary cooling and passive measures to reduce energy costs and improve comfort.





British Sugar Offices

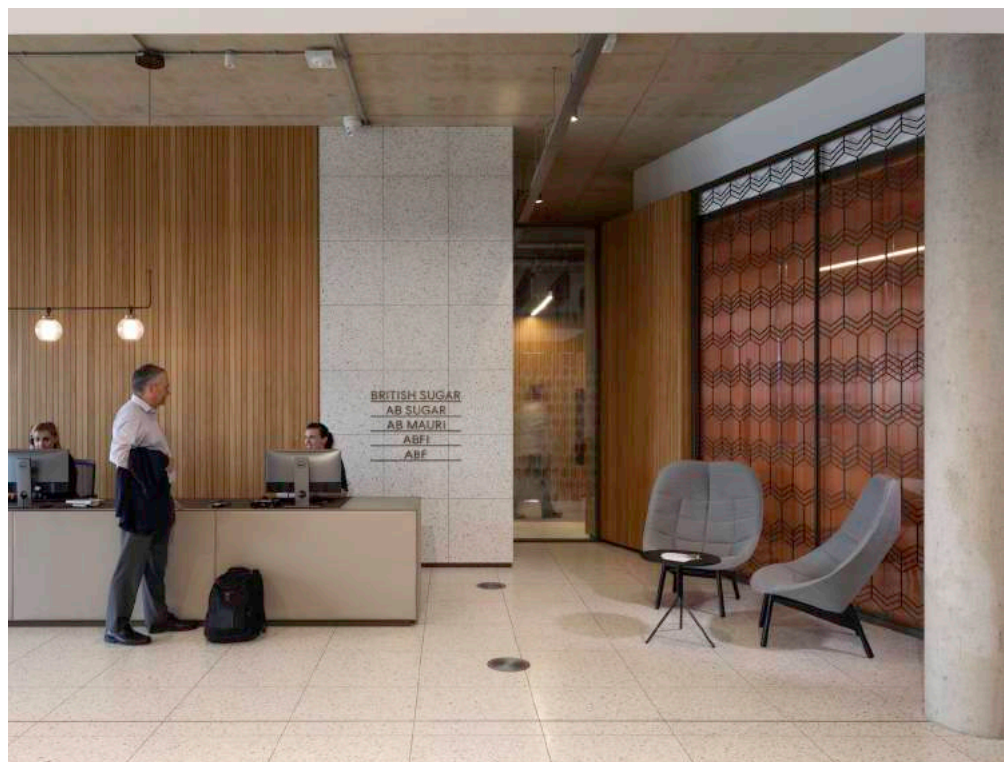
Location: Peterborough

Value: n/a

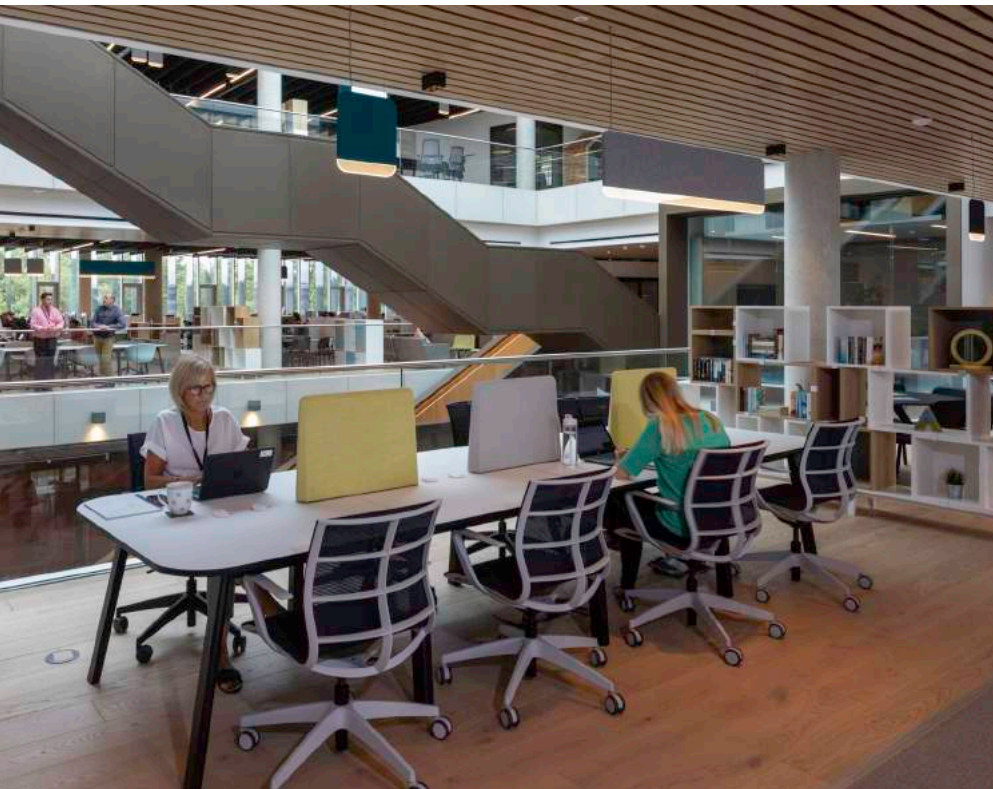
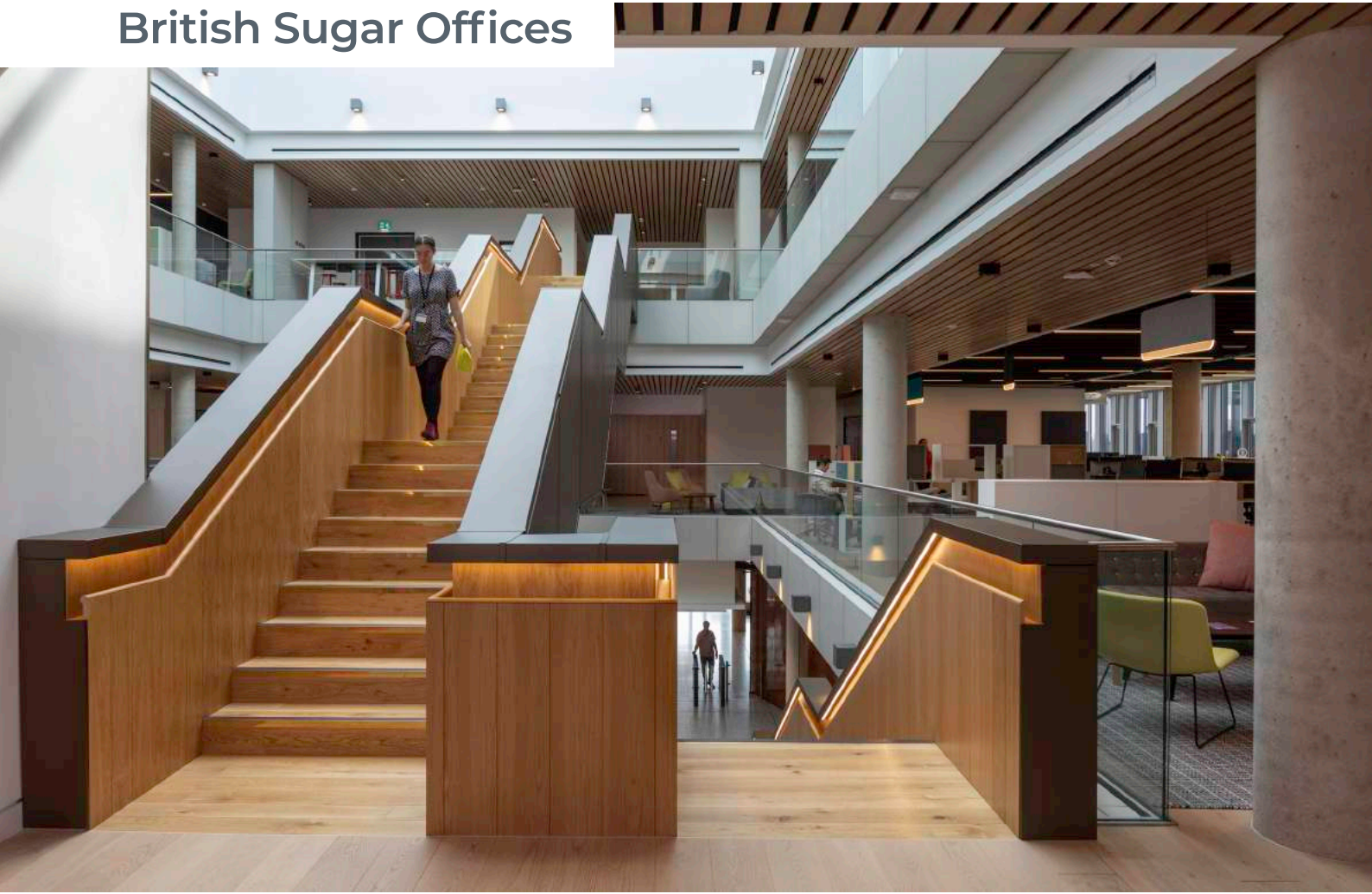
Peterborough is home to a unique headquarters office building for several divisions of a FTSE top 25 company. The client requires individual departments within the building to express their own identities, whilst maintaining a building that encourages identification with a company-wide ethos.

Providing space for 300 employees, the building also includes breakout, training and conferencing facilities, a café and focal atrium meeting space and incorporates passive design principles to achieve a low-energy solution.

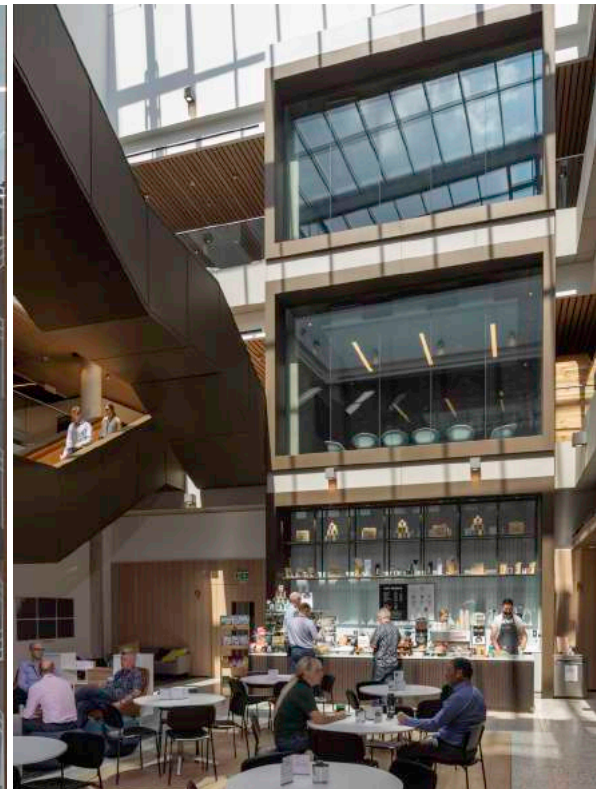
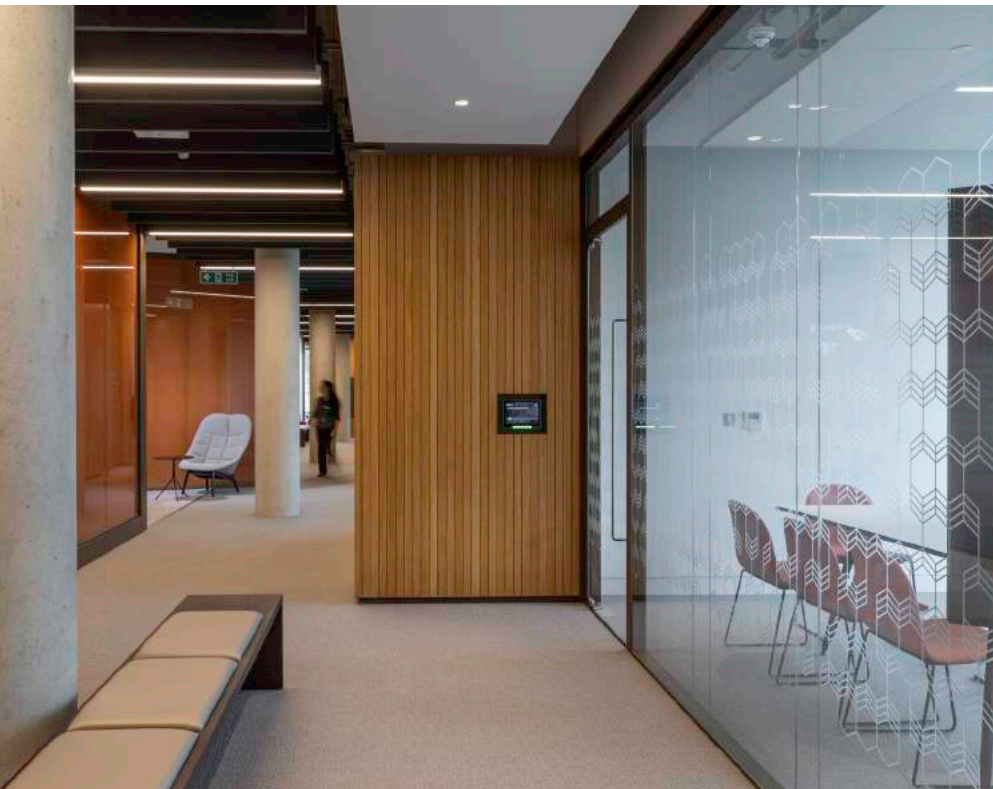
The building is seen by the client as a vehicle for achieving organisational change, modernising working practices and engage staff with the strategy for the future of the business.



British Sugar Offices



British Sugar Offices





Slimming World HQ

Location: Alfreton

Value: n/a

A new building at the Slimming World headquarters in Alfreton allowing the company to develop its training operations in an attractive purpose-built space and providing high-quality staff catering facilities designed to suit current occupancy levels. The proposed building adjoins the existing offices and includes a car park at lower ground floor level.

The space between the main building and the new building is being converted into an atrium to act as a sheltered hub space. The training suite and restaurant both feature large picture windows looking out onto trees and an adjacent brook. Three timber-clad feature roof canopies create a striking external composition, and also contain northlights to allow daylight into the deep-plan training room spaces. Solar shading to the extensive glazed areas is formed from timber slats, and

provides elevational interest and a contrasting finish to the surrounding buff brickwork. An array of photovoltaic panels is integrated into the pitched roof elements.





23 Goldsmith Street

Location: Nottingham Trent University

Value: £9m

The 23 Goldsmith Street development will provide an exciting new office building for Nottingham Trent University. The building consists of 3 storeys of general office and meeting spaces with a 'shop front' and exhibition space on the ground floor to showcase key NTU initiatives.

With a bold architectural form, incorporating high quality external facing materials this building will transform this derelict brownfield site into a distinctive and attractive addition to the Nottingham skyline.





Watford Town Hall

Location: Watford

Value: £15m

A 2,500m² extension to the Grade 2 Listed Watford Town Hall, plus a 500 space multi storey car park, all located within the Watford town centre conservation area. The extension contains a new public entrance and Customer Service Centre plus office accommodation for public sector partners such as the Hertfordshire Constabulary. The project also includes extensive public realm improvements.

CPMG's role is to lead the project through a complex programme of internal and external stakeholder engagement, including liaison with numerous adjoining owners and special interests such as Historic England. CPMG is also leading a full design team in the development of designs in accordance with PAS 1192 at BIM maturity level 2.

The multi-storey car park replaces an existing surface car park and serves current requirements including the

Colosseum Theatre, West Herts College, Watford Leisure Centre, Watford Library and nearby office users including the BBC and the Borough Council itself.

The public realm work focuses on the challenge of replacing traffic dominated environments with more pedestrian friendly solutions. The design of the extension to WBC's office is a complementary modern solution presenting an appropriately civic face to the new public realm.





Alcatel Submarine Networks

Location: Greenwich

Value: £13m

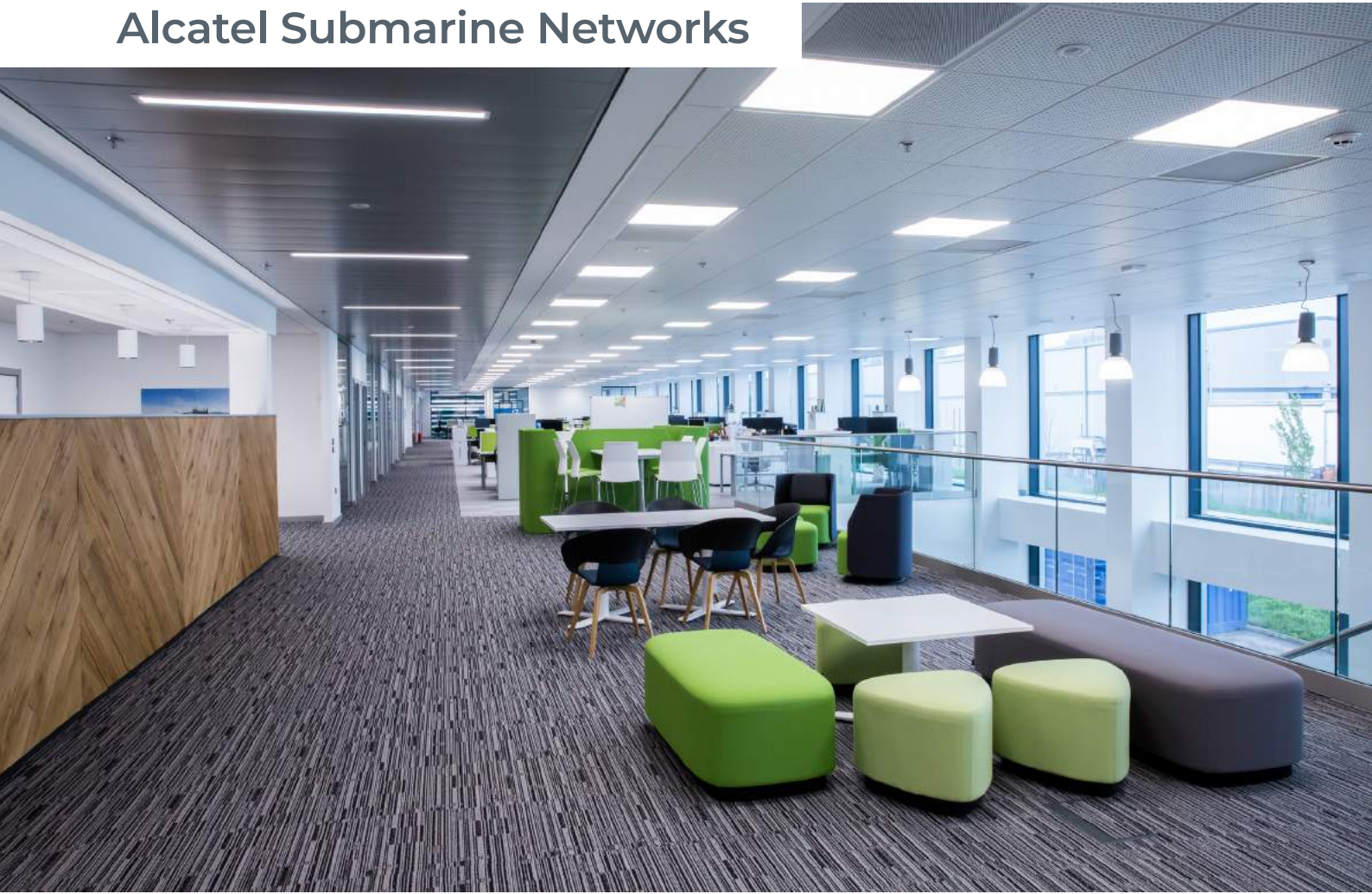
Alcatel Submarine Networks (ASN) is the world's only fully integrated provider of turnkey submarine network solutions.

The project refurbishes and extends ASN's facility on the Greenwich Peninsula, paying particular attention to improving and extending office spaces and adding a new reception and café area.

Key criteria include improvement to first impressions and adding facilities that will assist in attracting and retaining the highest quality staff, this is done by creating a heart space that includes a café, informal working areas and meeting spaces. The office spaces are thoroughly refurbished, extended and given a new highly glazed North facing facade that maximises daylight and views out. A void with connecting feature staircase within is added to the office space to increase connectivity and visual interest.



Alcatel Submarine Networks





BE Offices, Euston

Location: London

Offering a business lifestyle that allows your clients and employees to enjoy their time at work, BE Offices is now the UK's leading provider of flexible office space solutions. This excellence has been recognised as Winner of BCA 'Business Centre of the Year' in 2011, 2010, 2009, 2008 and 2006 and in the Sunday Times 'Best Small Companies to Work For' Award of 2010. As London's 2nd largest independent serviced office provider, BE Offices understand the importance of inspiring business environments and of making a quality first impression.

Located in the fantastic Evergreen House with unique and stunning views over the city, we have worked with the properties of the building and the space to create an agile working environment with a blend of spaces to support productivity and wellbeing. Different environments promote different working styles, interactions and activities. It is a high-quality environment employing a minimal

palette of materials, feature lighting and furniture, allowing sensitive manipulation to create distinct zones with identity and personality for a number of different occupants.

Not just a great place to work, the environment embodies the ethos of the company, the quality of its portfolio and its focus on creating space where people want to be.





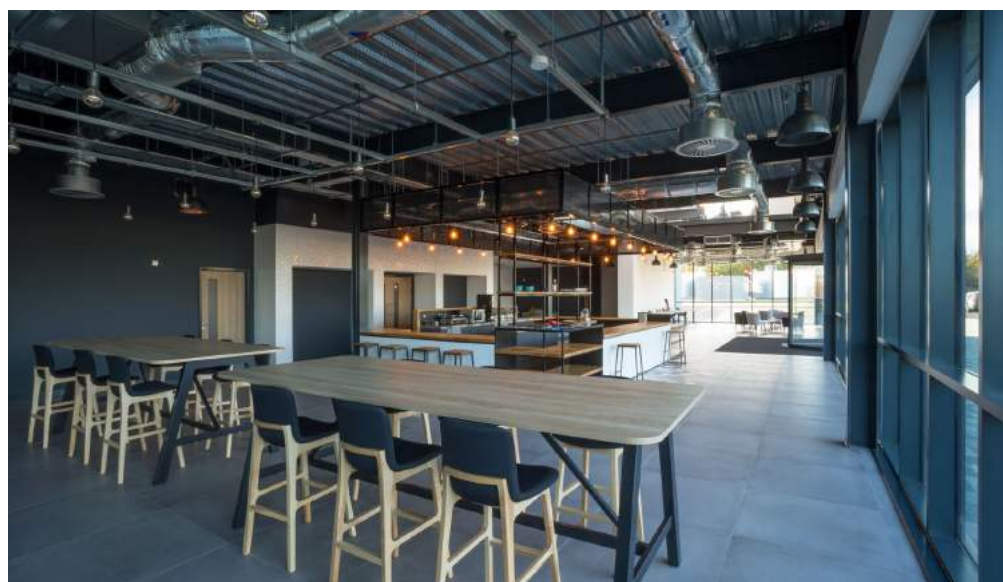
Jackson's Bakery

Location: Hull

Jackson's Bakery is a fifth-generation family business supplying sliced sandwich bread to major sandwich manufacturers in the UK and Europe from its base in Hull. In 2018, a new production facility, with a difference, was opened in Corby. Working with fellow Nottingham Architects Cox Freeman, responsible for the new build, CPMG ID was appointed to conceive of a new workplace amenity and client engagement zone based on their concept 'Bakery 51'.

This is the 'Bakery 51' flagship. It provides flexible and informal work space for its employees, serving them fresh baked produce and high quality coffee in an environment to rival the best of the High Street chains. Linked with a demonstration theatre, the café environment can be transformed into an entertainment and presentation suite, where existing and potential clients can devise new recipes and have them baked and sampled, live.

In a deliberately theatrical setting, innovative bakery is viewed from the café, reconfigured for comfortable viewing and then sampling in a formal dining zone. Meeting rooms, training facilities and employee welfare amenities are also featured.





Location: Nottingham

City Buildings, Carrington Street, Nottingham

Built between 1896 and 1897 the building is situated within Nottingham's Canal Conservation Area. Constructed of brick with stone and brick dressings and a slate roof covering, the facades demonstrate a flamboyant Renaissance Revival style with stone banding and pedimented gables along the parapet.

At ground level, the project involves the reinstatement of the retail shopfronts restoring the building to its former glory, creating a uniform and consistent appearance in keeping with the building as a whole. A new shared reception area on ground floor central unit with new lift core serving the storeys above which are stripped back and converted into high quality commercial office space. The

roof space to the rear of the building is extended with a linear, modern dormer, allowing access to a terrace with views across the city and up to Nottingham castle. Protruding glass boxes to the rear and gable end modern interventions to this fine Victorian building.





Rushcliffe Civic and Leisure Centre

Location: Nottingham

Value: £11m

This project enables a leading borough council in Nottingham to co-locate its offices, civic facilities and main leisure centre onto one site, improving the efficiency and quality of public services in the area.

Rushcliffe Borough Council will move into 2,000 square metres of open plan office space and new civic facilities including Council Chamber, Leader's and Members' Rooms and associated meeting spaces. In addition to the council buildings, local people and staff will benefit from a new leisure facility located in the heart of the West Bridgford community.

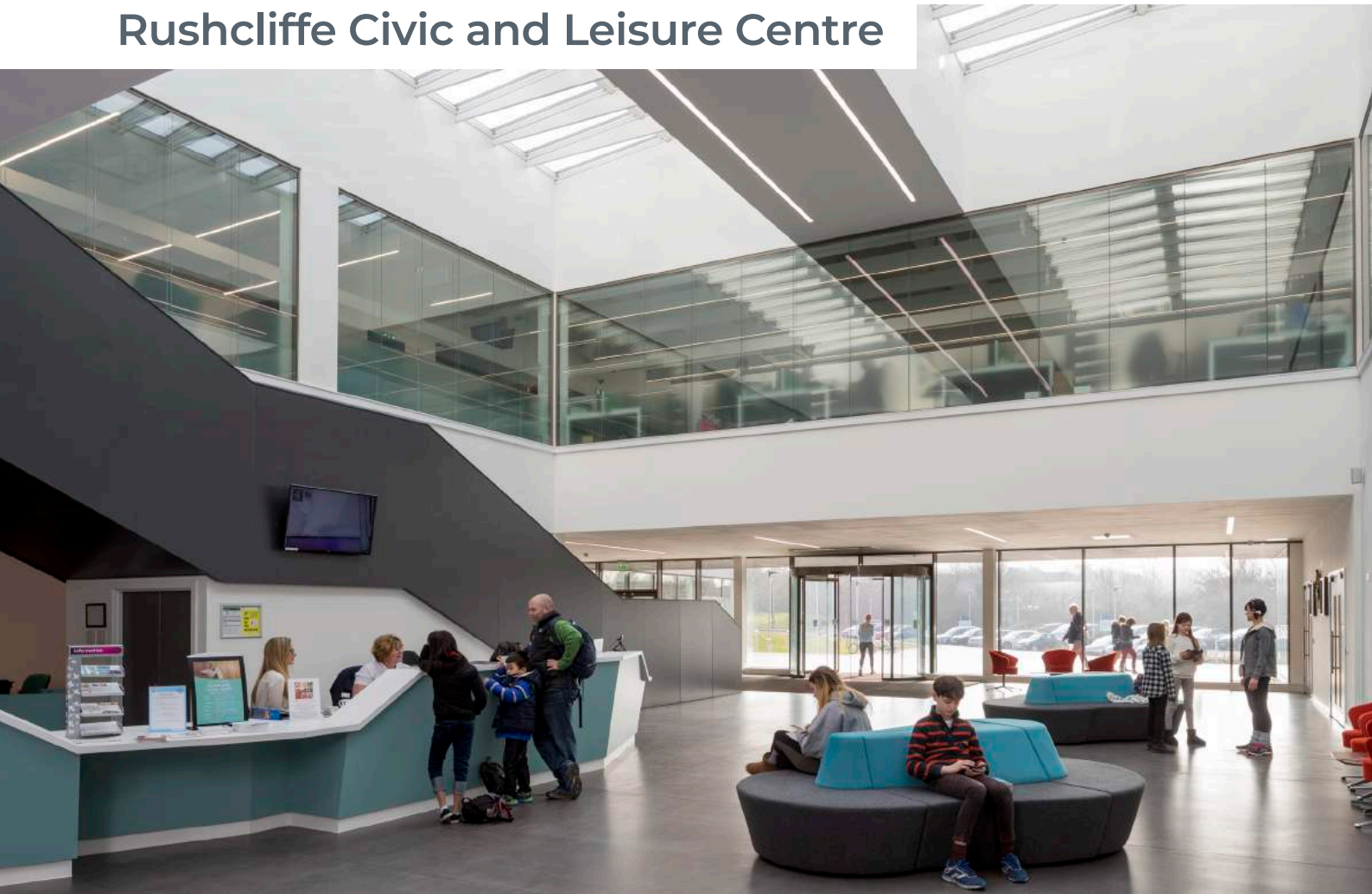
The building has been designed to secure improvement in the efficiency and quality of delivery of public services and to transform the leisure provision for this part of the Borough.

In addition to being highly efficient, co-locating the two facilities provides Borough staff with a great leisure facility on their doorstep that includes a large gym and 6 lane 25m length pool.

Energy efficiency is a key design driver, a fabric first approach has been adopted using PassivHaus principles of exposed thermal mass, super insulation combined with mixed mode ventilation. The building also has a rooftop PV array.



Rushcliffe Civic and Leisure Centre





Location: West Midlands

Value: n/a

Headquarters for Construction Company, West Midlands

A new headquarters for a long established family run Construction Company of circa 20,000 sqft. In addition to architectural design, CPMG is providing workplace consultancy services to develop a people focused brief with a particular emphasis on how the new building can be a vehicle for change towards a modern, healthier approach to work.

The site is located close to an important arterial road; this is both an opportunity through creating a high profile design that advertises the business and its capabilities and also a constraint in terms of noise and pollution. The design solution addresses this through placing working places on the quieter, northern side of the building facing towards a stream

and mature trees, whilst common areas and an atrium space provide a buffer to the South facing towards the road.

The building uses a low energy mixed mode ventilation system with feature chimneys that extract air via the atrium space.





Location: Nottingham

Nottingham Science Park, Building 2

Owned by Nottingham City Council and located adjacent to the University of Nottingham, the science park contains a series of office buildings designed by well known UK architects. CPMG is retained by the city council to plan the final phase of the park and to design what is known as Building 2, a speculative office building totalling 35,000sqft gross floor area. In addition to the office the building also contains a focal hub space for the park. There is also parking for 81 cars.

The hub space contains a prominently positioned café, meeting rooms and outdoor seating located on the pedestrian route between science park and nearby tram stop. The hub space is celebrated visually with a double height glazed curtain wall under a large cantilever of office space which serves

as a protective canopy. The facade is a rhythmic pattern of modules in a combination of full height glazed elements and convex architectural mesh infills which are finished in a high quality anodised bronze, expressive of an autumnal theme and contrasting with the more spring-like theme elsewhere on the site.





Travis Perkins HQ

Location: Northampton

Value: £35m

A new headquarters is a vital part of the company's expansion programme.

The scheme features a 19,000m² office building, an innovation centre, training and conference centre and a 1,000 space multi-storey car park.

The low-energy design incorporates a heavy weight passive design solution and solar panels that cover the entire top deck of the car park's roof creating a carbon neutral building which aims to achieve an Outstanding rating from BREEAM.

The office building has two wings of open-plan offices connected by a central atrium. The new training centre occupies one wing at first floor level and connects to the upper level of the conference and innovation centre which occupies a portal frame building at the rear of the HQ.

The building is modern and environmentally-friendly and the design improves efficiency, reduces energy costs and assists Travis Perkins' in its plans for growth by creating an attractive working environment that is fit for the future.





Watermead Business Park

Location: Leicester

Value: £1.2m

This is a very low energy office building located on Watermead Business Park, just north of Leicester. The design uses the PassivHaus energy concept, a German-based building standard.

In order to achieve PassivHaus certification, buildings must achieve an actual reduction in energy use of 80% in comparison to current UK best practice.

The building has large south facing windows, which are shaded from the sun to avoid summertime overheating, and mechanical ventilation aided by Rehau earth tubes that pre-cool summer air by drawing it through a network of underground pipes. The building is not only very low in running cost but also economical to construct, at £1,780 per square metre (in Q2 2010). The building would be capable of replication on many different sites.

Because the building uses so little energy it has been possible to make it carbon negative by installing some photovoltaic panels on the roof. The building now has an EPC rating of -2 (A+) and is expected to generate negative annual energy costs of approximately £2,800.





Dunelm Headquarters

Location: Leicestershire

Value: £8m

Dunelm's new headquarters is designed to meet the needs of this rapidly expanding soft furnishings retailer with stores across the UK. CPMG worked closely with Dunelm to design an headquarters that provides excellent working conditions for its staff and achieves very low future energy costs.

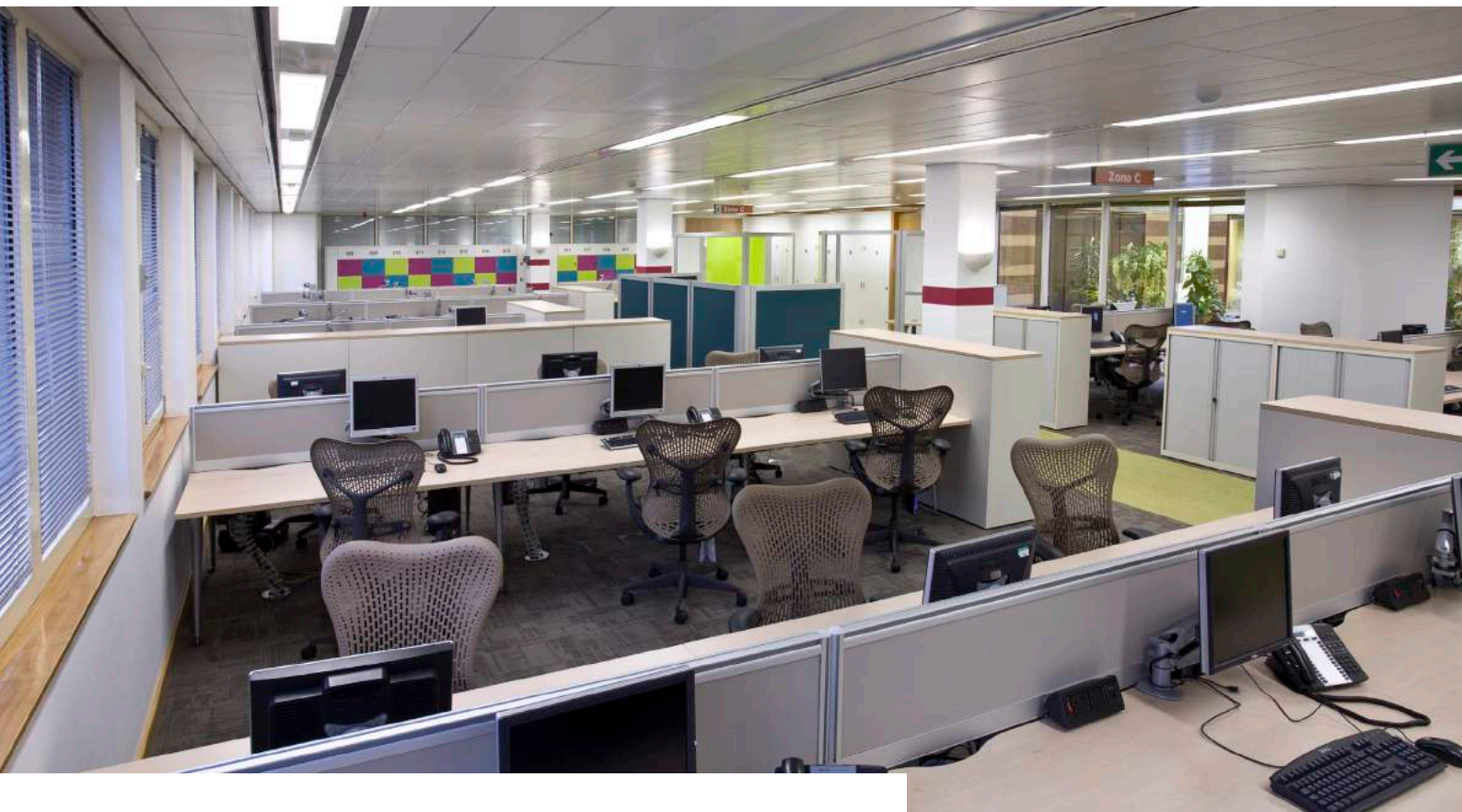
Following research into BREEAM, the design team recommended that Dunelm focus on achieving excellent ratings under two particular sections of BREEAM; energy use and health and wellbeing.

The building has 7,000 square metres of nett floor area set out over two storeys in three connected blocks. Open plan space with an abundance of natural daylight forms two blocks, whilst the third contains cellular accommodation such as the core, conference and training facilities and meeting rooms.

The building's orientation ensures an acceptable level of road noise for staff and office spaces maximise daylight while effectively controlling glare.

Materials are crisp and simple, consisting of glass and precast concrete cladding contrasting with the building's lush landscaped setting.





Government Offices

Location: Guildford

Value: Various

A framework appointment with Turner and Townsend to deliver changes to the Central Government Regional Office network. Preliminary studies identified eleven regional offices in greatest need of attention when measured against estate objectives with five regional offices (GOYH Leeds, GONE Newcastle, GONW Liverpool, GOSE Guildford and GOSW Plymouth) selected for refurbishment under phase one.

The Gershon and Lyons reviews and Treasury review of the GO network provide the drivers for efficiency savings across a whole range of activities, particularly when combined with a reducing headcount.

The encapsulation of various space planning and interior design exercises at selected regional offices in an Optional Appraisal provides managers with the ability to make informed

decisions with regard to capital expenditure on the overall estate.

Comprehensive refurbishment of regional offices followed on.





Cambridgeshire County Council

Location: Cambridge

Value: £4m

Part of The Walks masterplan for developer DE Clegg, in partnership with Cambridgeshire County Council.

The design, which was chosen from a competitive tender exercise, was developed through close consultation with the Local Planning Authority, English Heritage, Local Interest Groups and CABE.

Considerable skill was exercised by the design team in successfully knitting a large modern building into the townscape of a historic market town.

The building is intensively occupied with open plan office space and includes a top floor staff rest area with external terrace looking across the rooftops of Huntingdon.

The office is a low energy building using natural ventilation combined with night purging to ensure a comfortable internal environment.

Predictive computer modelling techniques have been employed to assess the environment achieved and develop the most effective environmental control measures.





12 Smithfield Street

Location: London

Value: £35m

A 150,000 square foot mixed use, retail and corporate headquarters building, located immediately to the south of Smithfield Market in the City of London, is bringing much-needed modern and attractive commercial space to market.

The building has eight floors; six above ground level and two below. A glazed central atrium floods natural light into the core of the building, and also fulfils its main circulatory functions.

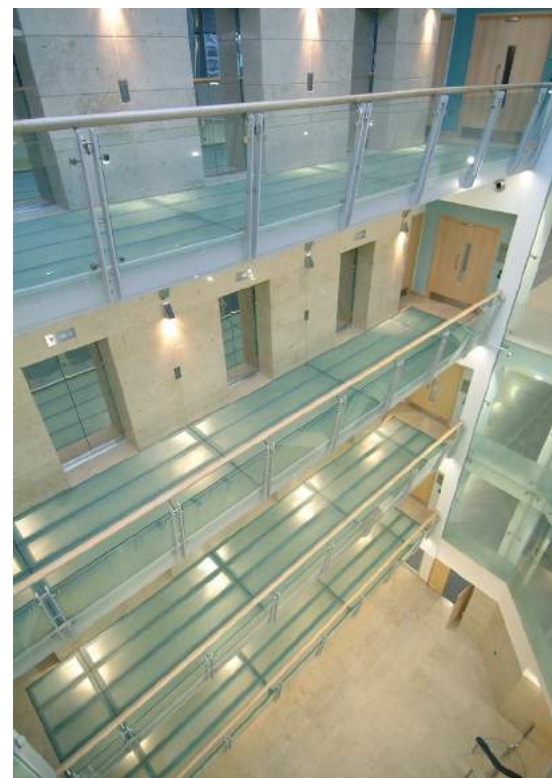
The office fit out provides an auditorium, meeting room suites, and an IT suite in addition to open plan office accommodation.

At ground floor level, large retail units enliven the street scene and a hydraulic lift provides access to a basement car park.

Careful consideration enabled the team to design out the need for compartmentation of the office space,

smoke ventilation of the atrium or sprinklers in the offices; usually standard solutions in the City. The design approach taken reduces both capital costs and costs in use.

The building is ventilated and cooled using a standard four pipe fan coil system and the building is clad in bronze anodised aluminium and natural Portland stone creating an appealing aesthetic externally.





Jarvis Headquarters

Location: York

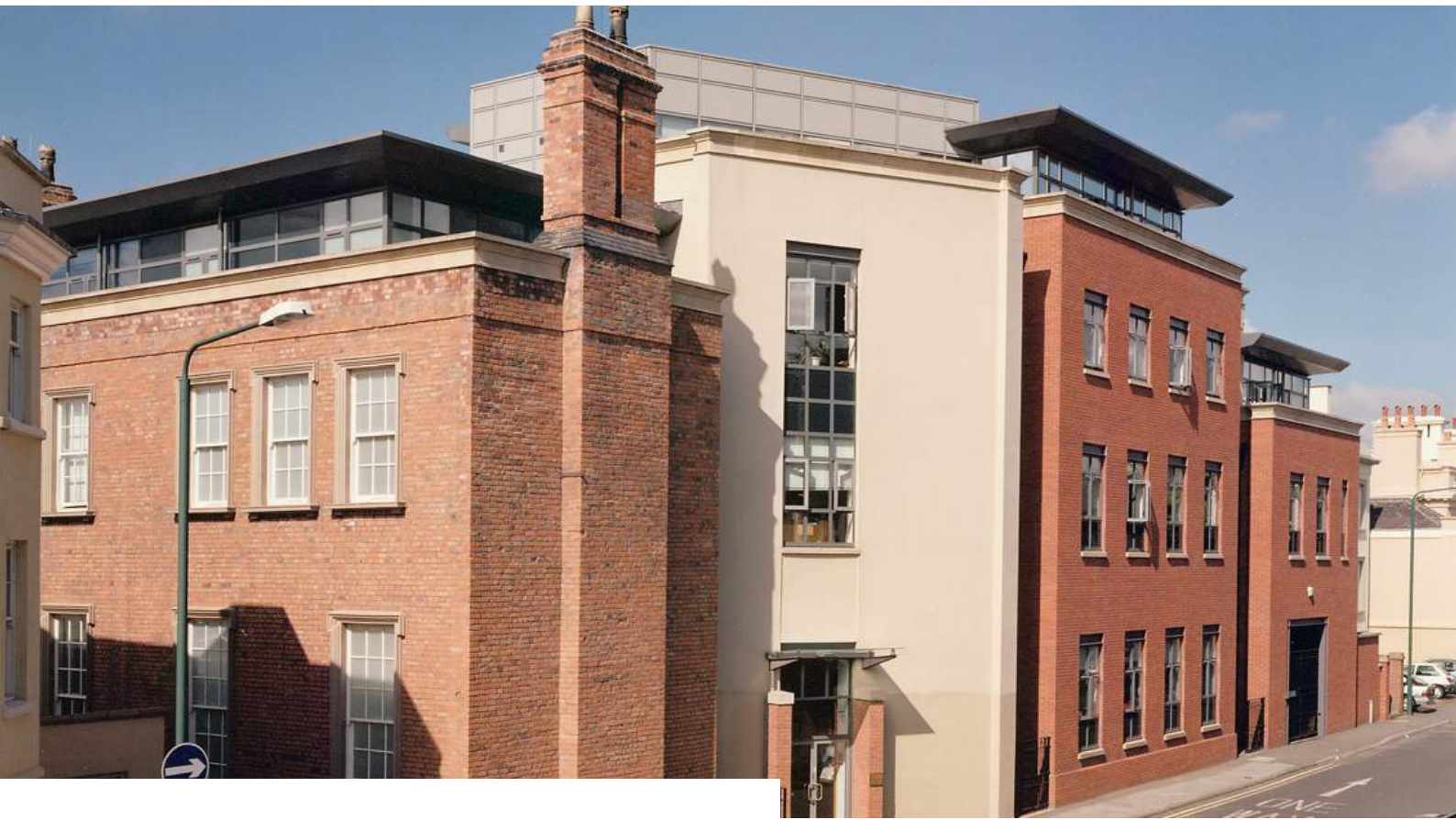
Value: £7m

This is a £7m office headquarters building of modern and innovative design, situated inside York's medieval city wall.

The project received strong support from the city council, English Heritage, the Ancient Monuments Commission, and local amenity societies. The building is naturally ventilated, employing heavy structure to limit temperature fluctuations. Fixed external louvres moderate solar gain, and air grilles above enable fresh air to be admitted to the centre of each floor plate from any point around the perimeter of the building. This air is ducted into local 'void pack' mechanical ventilation units, which fit between the primary structure in the suspended ceiling voids. Heating or cooling batteries and extra void packs can be flexibly added or removed to accommodate changing interior layouts.

An air-conditioned control room monitors the status of the rail network 24 hours a day, and co-ordinates maintenance work for approximately one third of the UK's rail network. Levels and ground structure were carefully designed to leave the critical archaeological layers, which underlie the site, undisturbed. The end result is a modern office building within a historic setting.





Park View House

Location: Nottingham

Value: n/a

Park View House is a new office headquarters building for international patent lawyers Eric Potter Clarkson.

The building is situated in the Park Conservation Area of central Nottingham, and exemplifies how a modern building can be successfully integrated into an area of historic architectural importance. The offices are naturally ventilated, except for main meeting rooms and the computer control room, which are air-conditioned. A high level of specification throughout includes a metal faced raised flooring system, and metal suspended ceilings. There is a basement with a high density storage system. The fully glazed top storey enjoys views of some 30 miles.

The site was originally occupied by an elegant Victorian villa, the key features of which were retained and integrated with the new building. CPMG was also responsible for space planning and interior design.





ARCHITECTURE & INTERIOR DESIGN

People. Purpose. Place.

Nottingham	23 Warser Gate Nottingham NG1 1NU
London	31/35 Kirby Street, London EC1N 8TE
Birmingham	The Lewis Building, Bull Street, Birmingham. B4 6EQ

enquiries@cpmg-architects.com

www.cpmg-architects.com