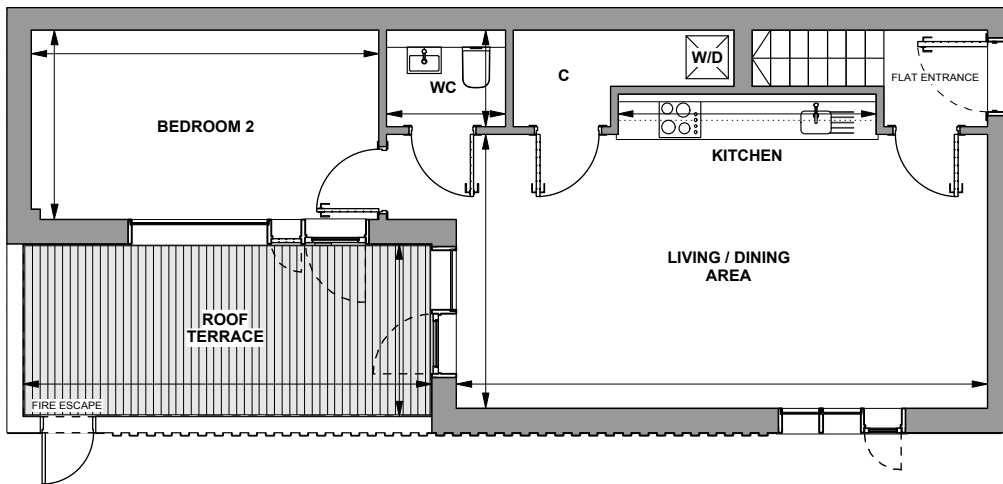


7 FOUNDRY MEWS, 58 BARNES HIGH STREET

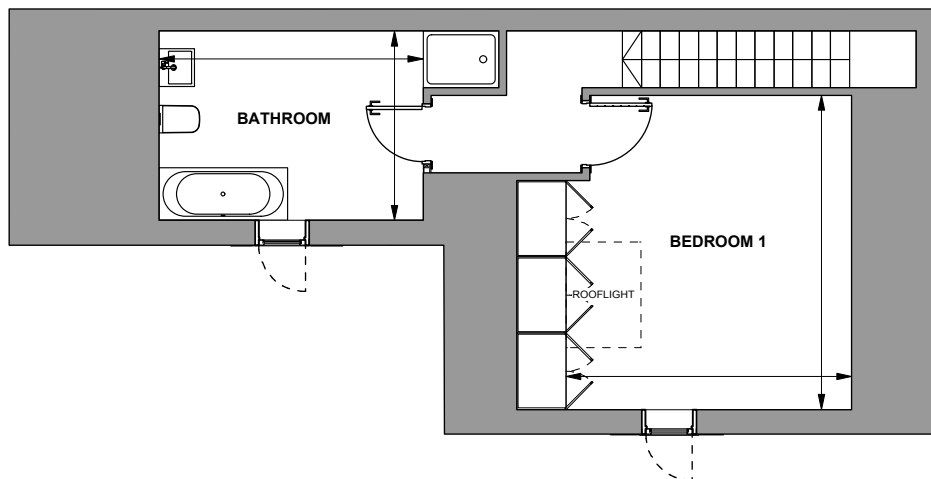
2 BEDROOM DUPLEX

ROOMS	Imperial	Metric	
Living / Dining	23' 1" x 11' 11"	7.03 x 3.63	Room dimensions are based on design drawings
Kitchen	11' 3"	3.42	
WC	5' 2" x 4' 2"	1.58 x 1.28	Note: angled ceiling in the bedroom and bathroom on the second floor
Bedroom 1	12' 5" x 13' 8"	3.78 x 4.16	
Bedroom 2	15' 1" x 8' 3"	4.60 x 2.51	Note: bedroom dimension to face of fitted wardrobe
Bathroom	11' 6" x 8' 3"	3.50 x 2.51	
Roof Terrace	17' 9" x 7' 6"	5.41 x 2.29	Total Internal Area: 80 sqm / 864 sqft

FIRST FLOOR
Entrance level



SECOND FLOOR



KEY

- C = Cupboard
- W/D = Washer/Dryer

LOCATION PLAN

