

Amenities

Travel

Parking permits are available through Hammersmith and Fulham council. Visitors can park but must pay and display.

Bike racks have been provided at the front of the building.

Disabled access

There is a ramp up to the front door for disabled access and a disabled WC on the ground floor. Access to the first and second floors is by stair only.

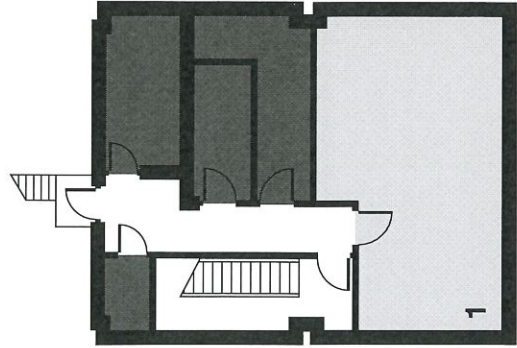
Security

Tenants are expected to install their own security alarms if required. The building has a security shutter to the main entrance that is closed at night. A video entryphone is connected to each unit.

B

Unit 1

Poor natural light suitable for some graphic/photographic processes and presentations. It has use of shared WC's and tea making on ground floor.



Networking and cables

A simple cable route has been designed to each unit allowing easy access to install network cable if required or move power and data points.

The courtyard at the rear is for the use of all occupants.

Unit	Floor	Sq.ft	Sq.m
1	B	369	34.3
2	G	154	14.3
3	G	369	34.3
4	G	232	21.6
5	G	473	43.9
6	G	213	19.8
7	1	140	13.0
8	1	369	36.1
9	1	203	18.9
10	1	493	45.8
11	1	206	19.1
12a	2	557	51.7
12b	2	556	51.7
			4354 404.5

Facilities

The thirteen units share WC's on the ground and first floors (as well as a first floor shower).

The tea making points on the ground and first floors are shared by 11 units. The heating and hot water is provided by communal boilers so will be included in the service charge.

There is extra storage for archiving in the basement by separate arrangement.