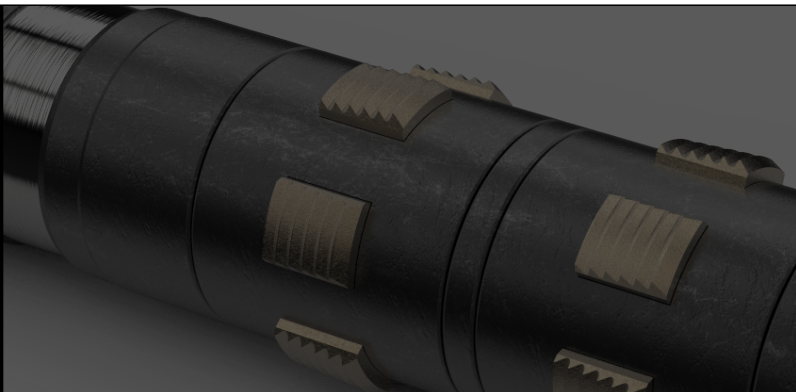


SCRAPER TOOL



The Oilenco Scraper Tool is a fully adjustable downhole scale and debris removal tool that can be set to any specific diameter and precisely adjusted to suit downhole conditions.

The scraper tool has a unique ‘anti-jamming’ feature that allows the cutting teeth to ‘relax’ during upward motion.

The tools are nominally sized to suit standard tubing sizes and are supplied with a set of cutting teeth to cover the entire tubing range plus any common restrictions.

“A unique anti-jamming feature”

The tool offers an effective and efficient method of scale removal, effortlessly removing small amounts of materials with each pass. Not only is this method efficient, it also prolongs the sharpness of the cutting teeth.

PRODUCT FEATURES

- Anti-jamming feature
- Size adjustable
- 360° scraper coverage
- Sampling cup can be attached to capture samples of scale

HOW IT WORKS

The scraper tool should be set to a diameter marginally bigger than the last known drift diameter. The tool is then run into the well and worked through any tight spots in the affected tubing area.

“Effective and efficient method of scale removal”

Once clear, the tool is returned to the surface, and the diameter slightly increased by rotating the adjustment ring. The tool is redeployed and again worked through any tight spots in the tubing. This process is repeated until the scale has been completely removed.

TECHNICAL FEATURES

- Teeth material:
 - Specification: AISI 4145 API 6A PSL 3 induction hardened
 - Coating: Titanium nitride (TIN)
- Teeth hardness:
 - Core: 450-500HV, 45-50HRC
 - Coating: 2300HV, 85HRC

WANT TO KNOW MORE?

Read how the Oilenco scraper tool was used within a project where the client was experiencing issues with their TRSSSV, or to talk to one of our engineers, call +44 (0)1224 548700 or email info@oilenco.com.

TOOL	SIZE			CUTTING TEETH SET RANGE			CONNECTIONS		WEIGHT
	TUBING SIZE	BODY OD Ø	LENGTH	TEETH SET NO	MAX. DIA Ø	MIN. DIA Ø	TOP	BOTTOM	KG (LBS)
Adjustable Scraper	2-7/8"	1.750"	28.6"	#1	1.80"	2.00"	1 1/2" OQL Male	1 1/2" OQL Female	7 (15.4)
				#2	2.00"	2.20"			
				#3	2.20"	2.40"			
Adjustable Scraper	3-1/2"	2.250"	25.5"	#1	2.90"	2.66"	1 7/8" OQL Male	1 7/8" OQL Female	10.4 (23)
				#2	2.70"	2.46"			
				#3	2.50"	2.30"			
Adjustable Scraper	4"	2.750"	26.2"	#1	3.30"	3.08"	1 7/8" OQL Male	1 7/8" OQL Female	15 (34)
				#2	3.08"	2.85"			
Adjustable Scraper	4-1/2"	3.000"	26.2"	#1	3.89"	3.61"	1 7/8" OQL Male	1 7/8" OQL Female	17.7 (39)
				#2	3.65"	3.38"			
				#3	3.42"	3.17"			
Adjustable Scraper	5-1/2"	3.750"	29.2"	#1	4.75"	4.45"	1 7/8" OQL Male	1 7/8" OQL Female	28.6 (63)
				#2	4.45"	4.15"			
				#3	4.15"	3.85"			
Adjustable Scraper	7"	4.750"	37.4"	#1	6.00"	5.58"	1 7/8" OQL Male	1 7/8" OQL Female	57.6 (127)
				#2	5.63"	5.21"			
				#3	5.26"	4.84"			