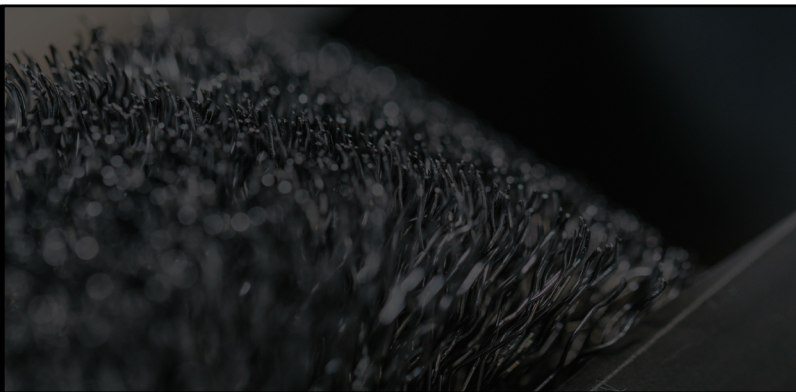


WIRE BRUSHES



WIRE ROLLER BRUSH

Oilenco have developed a range of brushes designed to offer a slickline deployed method of scale removal and cleaning of completion assemblies.

PRODUCT FEATURES

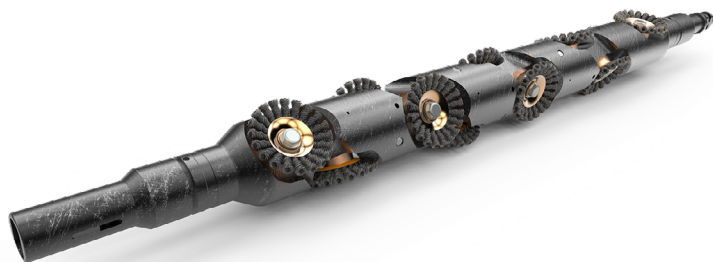
- Simple scale removal solution
- Simple assembly and redress
- No additional personnel required
- Robust design
- Full 360° coverage
- More effective than traditional wire brushes

The brush provides an effective means of cleaning, deburring and removing scale from a range of completion components, varying from safety valves to landing nipple seal bores. The wheels offer rotation in both directions which allows the tools to effectively remove scale and maximise deburring of damaged seal bores.

"cleaning, deburring and removing scale"

The spring-loaded wire wheels ensure no scoring occurs to the seal bores, whilst providing a honed type finish and 360° coverage.

Available to suit a range of nominal tubing and casing sizes.



Wire roller brush

WIRE WHEEL BRUSH

The Oilenco wire wheel brush provides an effective means of cleaning and polishing seal bores within completion equipment.

PRODUCT FEATURES

- Simple and effective method of polishing seal bores
- Full 360° coverage
- Wide range of sizes available
- Virtually maintenance free

The wire wheel brush is less aggressive than the Oilenco wire roller brush, and is more suited to fine polishing and smoothing the surface of a seal bore. The routine brushing of seal bores during wireline retrievable safety valve installations has proven invaluable in regaining seal bore integrity.

"ideal for fine polishing and smoothing"

Each brush wheel contains thousands of very tightly packed steel wire bristles, creating a relatively stiff brush structure. The brush wheels are positioned on the body of the tool so as to ensure full 360° coverage is obtained during every pass the tool makes through a seal bore.

Wire wheel brushes are available in a wide range of sizes, from 7" completion seal bores, down to 2 3/8" annulus bores.



Wire wheel brush

FURTHER INFORMATION

To speak to one of our engineers about your application and our wire brush solutions, call **+44 (0)1224 548700** or email **info@oilenco.com**.